

Approvals  
I hereby certify that this plan was approved by the Central Otago District Council pursuant to Sec. 223 of the Resource Management Act 1991 on the 23rd day of July 2003, subject to the conditions or reserving of the easements set out in the Memorandum hereon.

*B. B. McNeil*  
Authorized Officer

Pursuant to Sec. 321(3)(c) Local Government Act 1974 the Central Otago District Council by resolution passed on the 23rd day of July 2003, is satisfied that adequate access is provided to Lots 7 and 11 - 20 by way of rights of way and that Section 321(1) shall not apply.

*B. B. McNeil*  
Authorized Officer

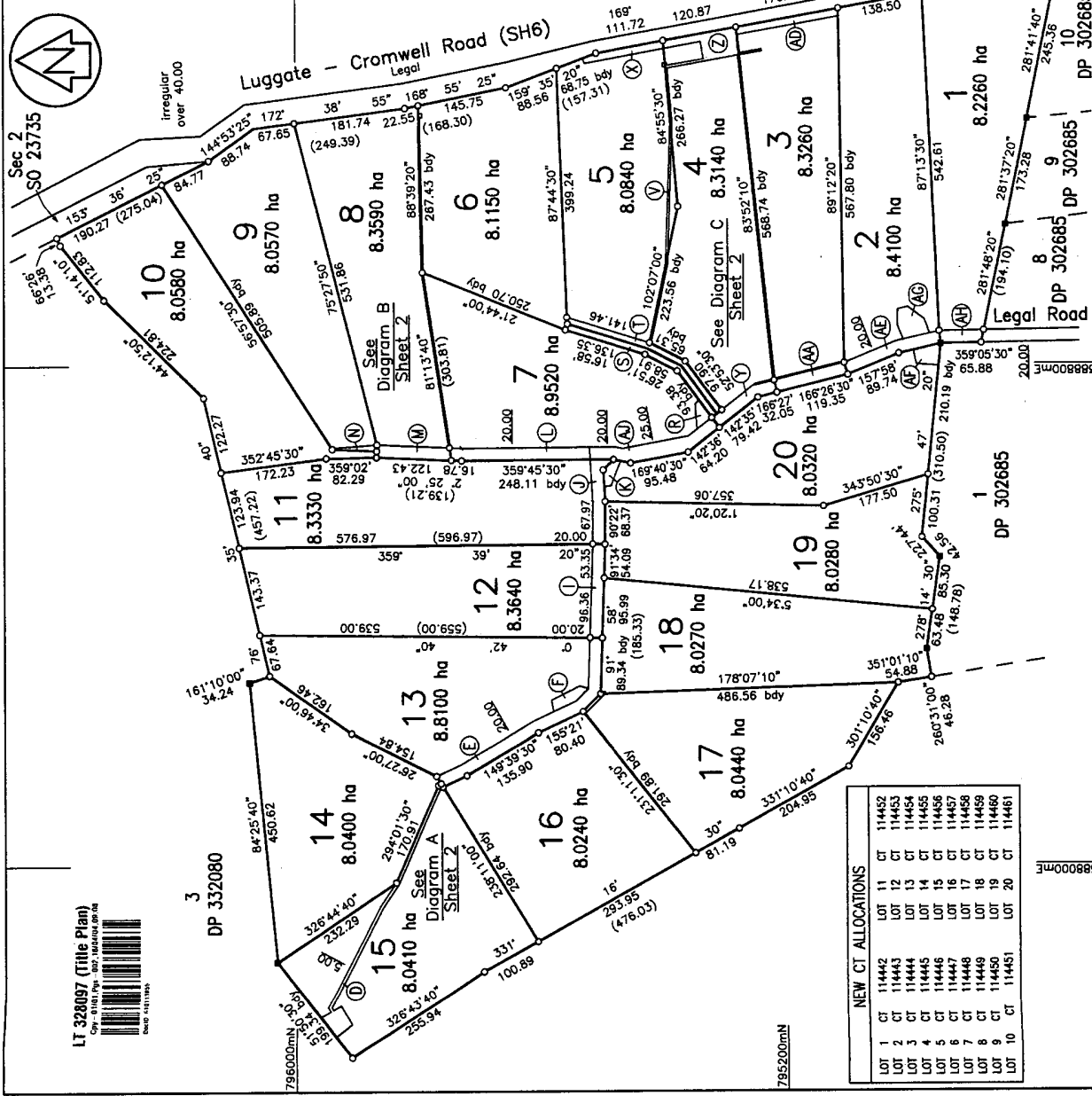
| SCHEDULE OF EASEMENTS IN GROSS |                                |
|--------------------------------|--------------------------------|
| SERV. TENE. SHOWN              | GRANTEE                        |
| Lot 1 AH                       | Telecom New Zealand Limited    |
| Lot 2 AE                       | Telecom New Zealand Limited    |
| Lot 3 AA, AB                   | Telecom New Zealand Limited    |
| Lot 4 YZ                       | Telecom New Zealand Limited    |
| Lot 5 T                        | Telecom New Zealand Limited    |
| Lot 6 S                        | Telecom New Zealand Limited    |
| Lot 7 LAU                      | Telecom New Zealand Limited    |
| Lot 8 M                        | Telecom New Zealand Limited    |
| Lot 9 N                        | Telecom New Zealand Limited    |
| Lot 11 J                       | Telecom New Zealand Limited    |
| Lot 12 I                       | Telecom New Zealand Limited    |
| Lot 13 E                       | Telecom New Zealand Limited    |
| Lot 15 AI                      | Telecom New Zealand Limited    |
| Lot 17 G                       | Telecom New Zealand Limited    |
| Lot 18 H                       | Telecom New Zealand Limited    |
| Lot 1 AH                       | Aurora Energy Limited          |
| Lot 2 AE                       | Aurora Energy Limited          |
| Lot 3 AA, AB, AD               | Aurora Energy Limited          |
| Lot 4 UY, Z                    | Aurora Energy Limited          |
| Lot 5 TV, W                    | Aurora Energy Limited          |
| Lot 6 Q3                       | Aurora Energy Limited          |
| Lot 7 LP, AI                   | Aurora Energy Limited          |
| Lot 8 M, O                     | Aurora Energy Limited          |
| Lot 9 N                        | Aurora Energy Limited          |
| Lot 11 J                       | Aurora Energy Limited          |
| Lot 12 I                       | Aurora Energy Limited          |
| Lot 13 E                       | Aurora Energy Limited          |
| Lot 15 AI                      | Aurora Energy Limited          |
| Lot 17 G                       | Aurora Energy Limited          |
| Lot 18 H                       | Aurora Energy Limited          |
| Lot 1 AH                       | Queensberry Irrigation Limited |
| Lot 2 AE, AG                   | Queensberry Irrigation Limited |
| Lot 3 AA, AB, AD               | Queensberry Irrigation Limited |
| Lot 4 YZ                       | Queensberry Irrigation Limited |
| Lot 5 TX                       | Queensberry Irrigation Limited |
| Lot 6 S                        | Queensberry Irrigation Limited |
| Lot 7 L, RA                    | Queensberry Irrigation Limited |
| Lot 8 M                        | Queensberry Irrigation Limited |
| Lot 9 N                        | Queensberry Irrigation Limited |
| Lot 11 J                       | Queensberry Irrigation Limited |
| Lot 12 I                       | Queensberry Irrigation Limited |
| Lot 13 E, F                    | Queensberry Irrigation Limited |
| Lot 15 DA                      | Queensberry Irrigation Limited |
| Lot 17 G                       | Queensberry Irrigation Limited |
| Lot 20 K, AF                   | Queensberry Irrigation Limited |

| MEMORANDUM OF EASEMENTS |            |
|-------------------------|------------|
| SERV. TENE. SHOWN       | DOM. TENE. |
| Lot 1 AH                | Lots 2-20  |
| Lot 2 AE                | Lots 3-20  |
| Lot 3 AA                | Lots 4-20  |
| Lot 4 YZ                | Lots 5-20  |
| Lot 5 T                 | Lot 6      |
| Lot 6 S                 | Lot 5      |
| Lot 7 LAU               | Lots 8-20  |
| Lot 8 M                 | Lots 8-10  |
| Lot 9 N                 | Lots 9&10  |
| Lot 11 J                | Lots 12-20 |
| Lot 12 I                | Lots 13-19 |
| Lot 13 E                | Lots 14-18 |

CLASS OF SURVEY : III  
Total Area 164.6440 ha  
Comprised in CT 10462 (All)

I, MILES ELIOT GARDINER, being a person entitled to practice as a licensed cadastral surveyor, certify that -  
(a) the surveys to which this dataset relates are accurate, and were undertaken by me or under my direction in accordance with the Cadastral Survey Act 2002 and the Surveyor-General's Rules for Cadastral Survey 2007/2;  
(b) this dataset is accurate, and has been created in accordance with that Act and those Rules.  
Dated this 23rd day of July 2003.  
Signature: *M. Eliot Gardiner*  
Field Book: ..... Traverse Book: .....  
Reference Plans ..... Correct

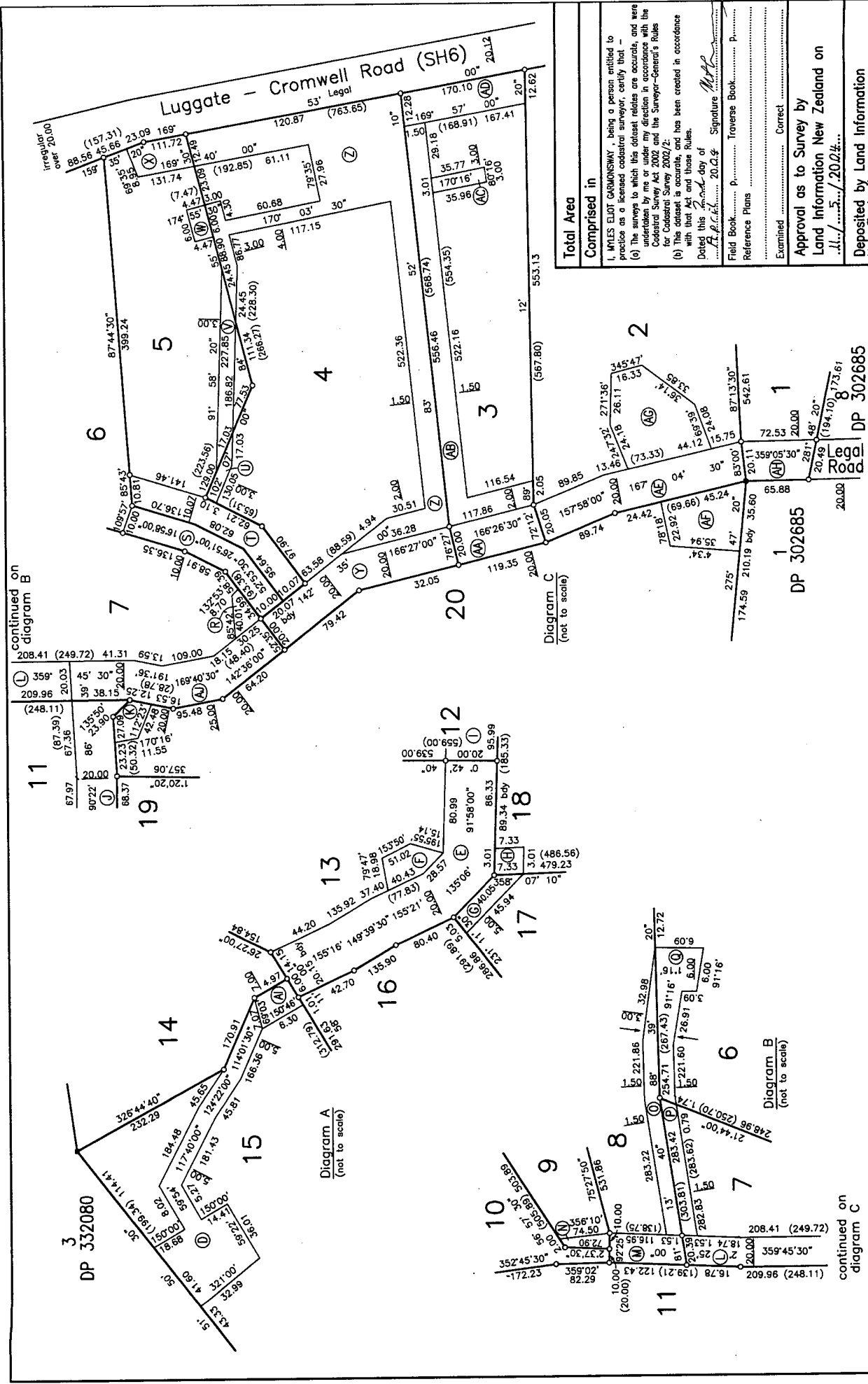
Approval as to Survey by  
Land Information New Zealand on  
.../.../2003  
Deposited by Land Information  
New Zealand on  
.../.../2003  
File # 1040  
Received 16/10/03  
Instructions DP 328097



LT 328097 (Title Plan)  
Scale 1:5000  
DATE 2003.07.23

Subject to Part IV A  
Conservation Act 1987  
TERRITORIAL AUTHORITY Central Otago District  
Surveyed by Paterson Pitts Partners Ltd  
Scale 1:5000 Date Aug - Sept 2003

Lots 1 to 20 being a subdivision  
of Lot 12 DP 302685  
LAND DISTRICT : OTAGO  
NEW CT ALLOCATIONS  
LOT 1 CT 114442  
LOT 2 CT 114443  
LOT 3 CT 114444  
LOT 4 CT 114445  
LOT 5 CT 114446  
LOT 6 CT 114447  
LOT 7 CT 114448  
LOT 8 CT 114449  
LOT 9 CT 114450  
LOT 10 CT 114451  
LOT 11 CT 114452  
LOT 12 CT 114453  
LOT 13 CT 114454  
LOT 14 CT 114455  
LOT 15 CT 114456  
LOT 16 CT 114457  
LOT 17 CT 114458  
LOT 18 CT 114459  
LOT 19 CT 114460  
LOT 20 CT 114461



|  |  |  |  |
|--|--|--|--|
| <b>LAND DISTRICT : OTAGO</b>   | <b>Diagram Sheet</b>                       |  | <b>TERRITORIAL AUTHORITY</b> Central Otago District<br><b>Surveyed by</b> Paterson Pitts Partners Ltd<br><b>Scale</b> Not to scale <b>Date</b> Aug - Sept 2003 |
|  | <b>DP 332080</b><br>continued on diagram C |  |  |
| <b>Total Area Comprised in</b>   |  | <b>Approval as to Survey by</b><br>Land Information New Zealand on<br>11/05/2012 |  |
| 1. MILES ELIOT GARDENSWAY, being a person entitled to practice as a licensed cadastral surveyor, certify that -<br>(a) The surveys to which this dataset relates are accurate, and were undertaken by me or under my direction in accordance with the Cadastral Survey Act 2002 and the Surveyor-General's Rules for Cadastral Survey 2002/2;<br>(b) This dataset is accurate, and has been created in accordance with that Act and these Rules.<br>Dated this 10th day of<br>11/05/2012 |  | <b>Deposited by Land Information</b><br>New Zealand on<br>2/08/2012              |  |
| Field Book..... P..... Traverse Book..... P.....<br>Reference Plans ..... Correct .....<br>Examined ..... Correct .....  |  | <b>DP 328097</b><br>File C1040<br>Received 16/10/11<br>Instructions              |  |