

REDUCED PLAN OF
SECTIONS 21, 22, 184 & 185
BLK I & II FRASER SD
(NOT TO SCALE)

SEE SHEET 4 FOR LOCALITY PLAN

○● SPECIFIED CROSSING PLACES

Note: Metric dimensions of length
where no symbols are given
Whole numbers = mm
Decimalised expressions = m

ORIGINAL SIZE mm

	BY	CHECKED BY	DATE
DRAWN	<i>[Signature]</i>	<i>[Signature]</i>	23.1.76
TRACED	<i>[Signature]</i>	<i>[Signature]</i>	23.1.76
SEARCH			
SUPERV			
RECOMMENDED	<i>[Signature]</i>		12.7.76
DHE	<i>[Signature]</i>		2/76

AMENDMENTS	BY	APPD	DATE

A. G. STIRRAT
CHIEF CIVIL ENGINEER

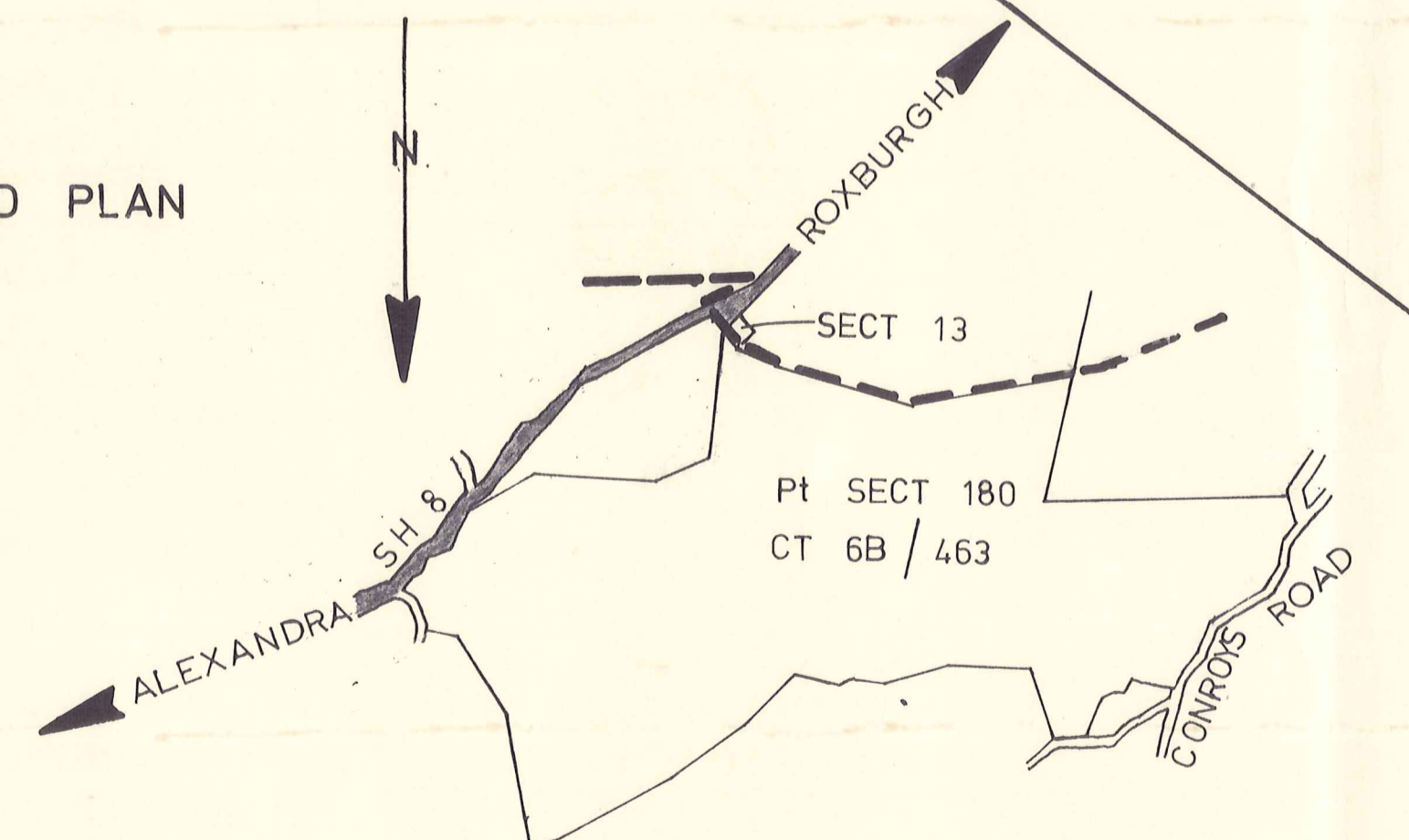
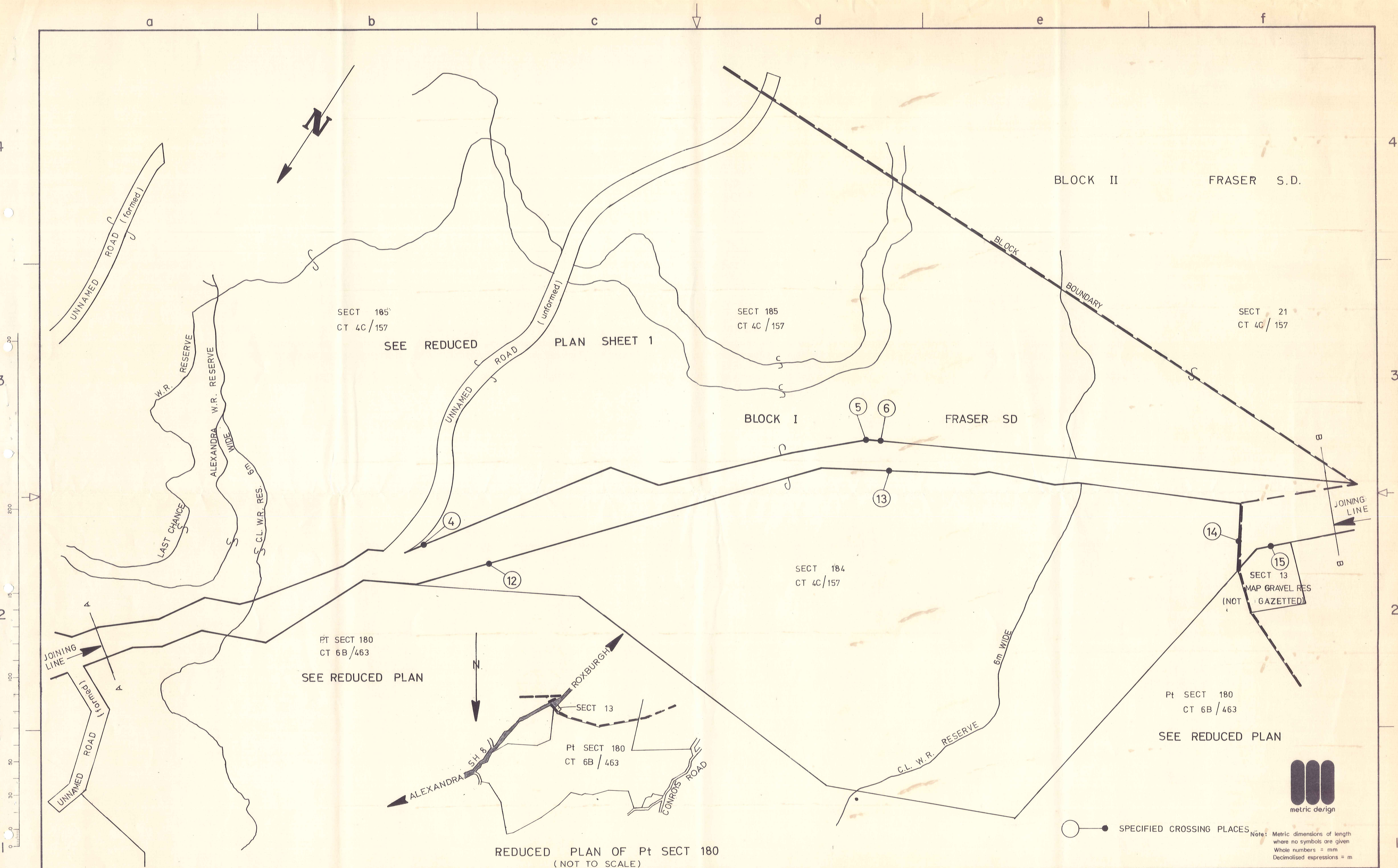
APPROVED
R. O. Bullen
D.C.E.

N.C.M'LEOD
Commissioner

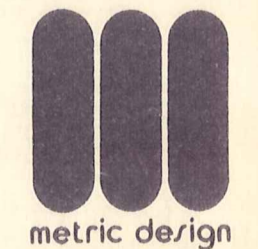
Ministry of Works and Development
CIVIL ENGINEERING
DUNEDIN

SH 8 - RD 16 - RS 328
ALEXANDRA - CONROYS ROAD
LIMITED ACCESS ROAD
RP 328 / 1.33 - RP 328 / 6.54

ORIGINAL SCALES	1: 2000	FILE
RECORD MAP 301	PH 15/W	
JOB	CODE	SHEET
LA 70/77/14		1
		REVISION



○ ● SPECIFIED CROSSING PLACES
 Note: Metric dimensions of length where no symbols are given
 Whole numbers = mm
 Decimilised expressions = m



AMENDMENTS	BY	APP'D	DATE

BY	CHECKED BY	DATE

A. G. STIRRAT
 CHIEF CIVIL ENGINEER

APPROVED
R.O. Bullen
 D.C.E.

Ministry of Works and Development
 CIVIL ENGINEERING
 DUNEDIN
 N.C. McLEOD
 Commissioner

ORIGINAL SCALES	1:2000	FILE
RECORD MAP	301	PH 16/W
JOB	CODE	SHEET
LA 70177114		2
REVISION		

SH 8 - RD 16 - RS 328
 ALEXANDRA - CONROYS ROAD
 LIMITED ACCESS ROAD
 RP 328 / 1.33 - RP 328 / 6.54

a b c d e f

4 4

3 3

2 2

1 1

SEE REDUCED PLAN SHEET 1

SECT 21
CT 4C/157

SEE REDUCED PLAN BELOW

LOT 1
DP 15696
CT 6B/462

BLOCK II FRASER S.D.

LOT 1
DP 15299
CT 6A/349

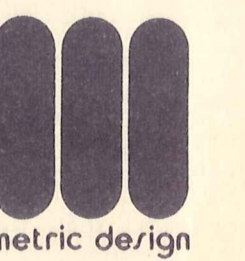
SECT 13
MAP GRAVEL RES
(NOT GAZETTED)

Pt SECT 180
CT 6B/463

BLOCK I
FRASER S.D.

REDUCED PLAN OF LOT 1 DP 15696
(NOT TO SCALE)

○ ● SPECIFIED CROSSING PLACES



Note: Metric dimensions of length where no symbols are given
Whole numbers = mm
Decimalised expressions = m

ORIGINAL SIZE mm

AMENDMENTS	BY	APPD	DATE

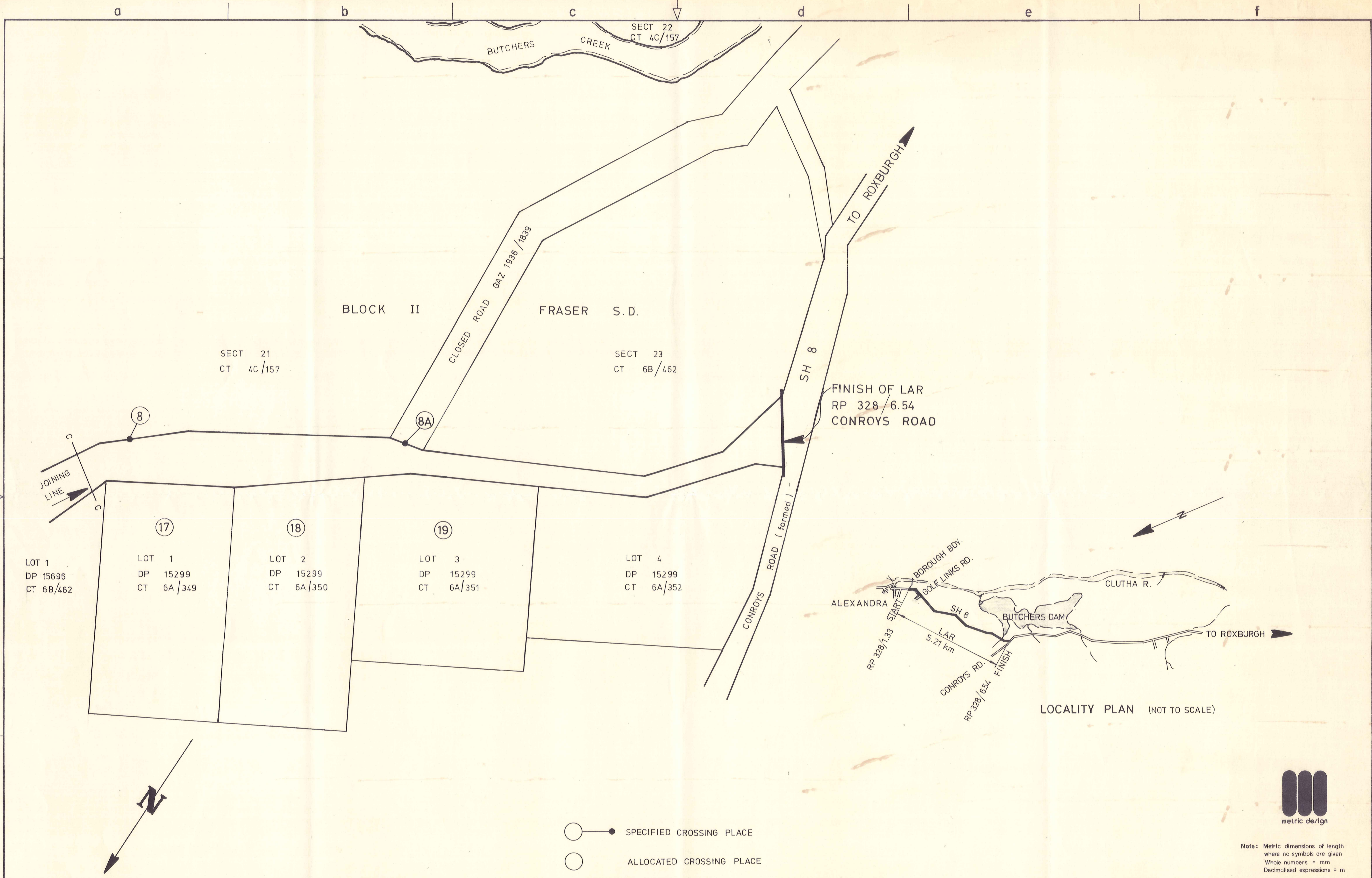
BY	CHECKED BY	DATE
DRAWN J.L. Lawson		26.1.75
TRACED J.L. Lawson		27.1.75
SEARCH		
SUPERV		12.76
RECOMMENDED		
DHE		12/76

A. G. STIRRAT
CHIEF CIVIL ENGINEER
APPROVED
L.O. Bullen
D.C.E.

Ministry of Works and Development
CIVIL ENGINEERING
DUNEDIN
N.C.M. LEOD Commissioner

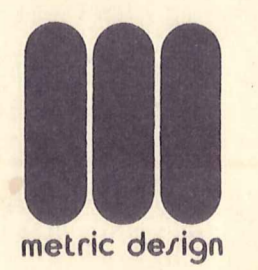
SH 8 - RD 16 - RS 328
ALEXANDRA - CONROYS ROAD
LIMITED ACCESS ROAD
RP 328 / 1.33 - RP 328 / 6.54

ORIGINAL SCALES 1:2000	FILE
RECORD MAP 810	PH 16/W
JOB CODE SHEET REVISION LA 70177/14 3	



ORIGINAL SIZE mm

- — ● SPECIFIED CROSSING PLACE
- ALLOCATED CROSSING PLACE



Note: Metric dimensions of length where no symbols are given
 Whole numbers = mm
 Decimalised expressions = m

AMENDMENTS	BY	APPD	DATE

BY: A. G. STIRRAT
 CHECKED BY: [Signature]
 DATE: 26.1.75
 27.1.75
 12.76
 APPROVED: R. O. Bullen
 D.C.E.

Ministry of Works and Development
CIVIL ENGINEERING
DUNEDIN
 N.C.M. LEOD Commissioner

SH 8 - RD 16 - RS 328
ALEXANDRA - CONROYS ROAD
LIMITED ACCESS ROAD
RP 328/1.33 - RP 328/6.54

ORIGINAL SCALES	1:2000	FILE
RECORD MAP	810	PH 16/X
JOB	LA 70/77/14	SHEET 4
CODE		REVISION

a b c d e f

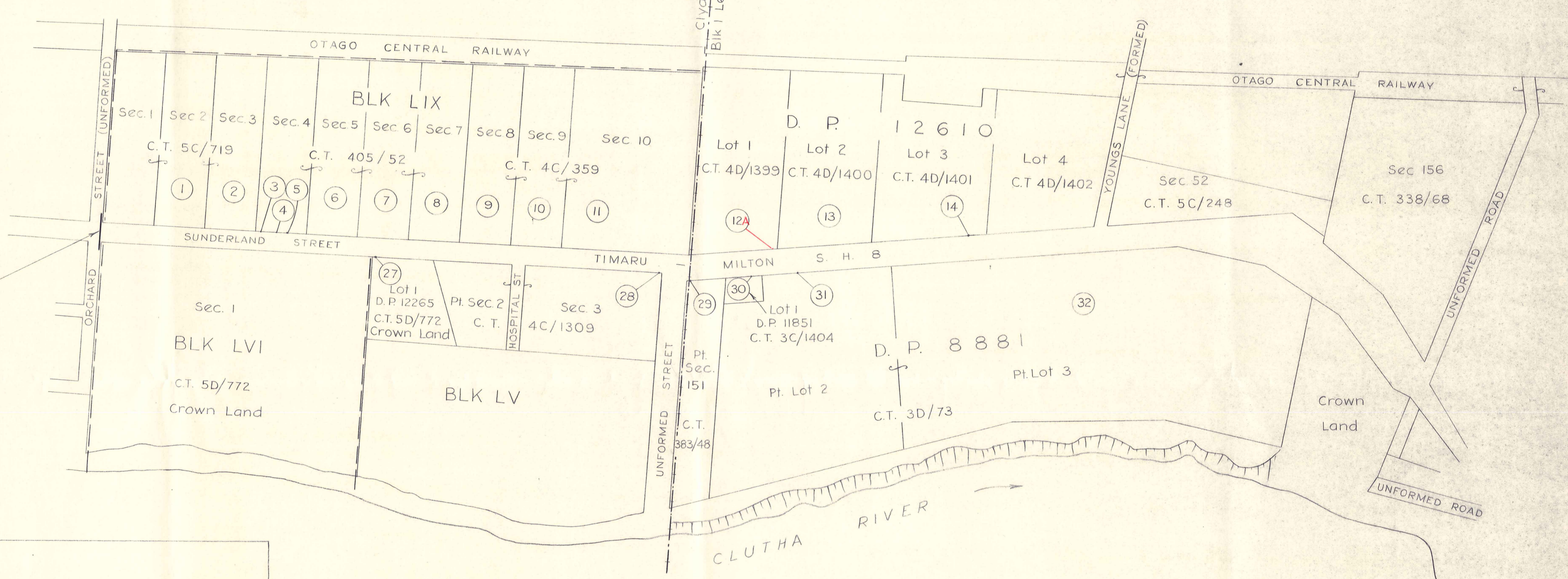
4
3
2
1
0
10
20
30
40
50
60
70
80
90
100
200
300
FT
INCHES

4
3
2
1
0
1
2
3
4

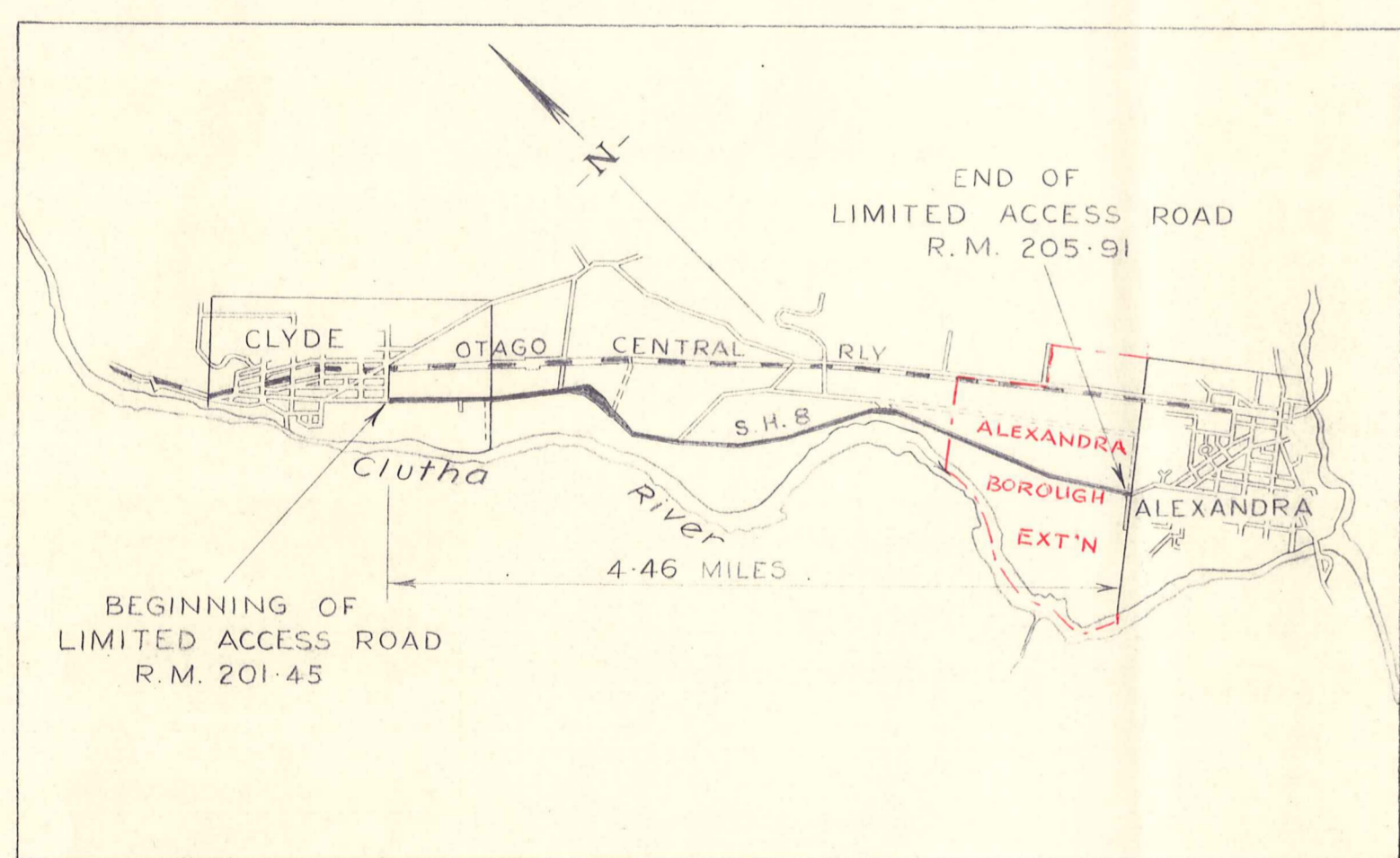
TOWN OF CLYDE

LEANING ROCK S. D.

BLK I



BEGINNING OF LIMITED ACCESS ROAD R.M. 201-45
JUNCTION OF S.H. 8 AND SOUTH BOUNDARY OF ORCHARD STREET



LOCALITY PLAN
SCALE: 1 MILE TO 1 INCH

LEGEND
LICENSED CROSSING PLACES
ALLOCATED CROSSING PLACES

B 2777 ALEXANDRA

GRAPHIC SCALES: 0 5 10 15 20 25 CHAINS

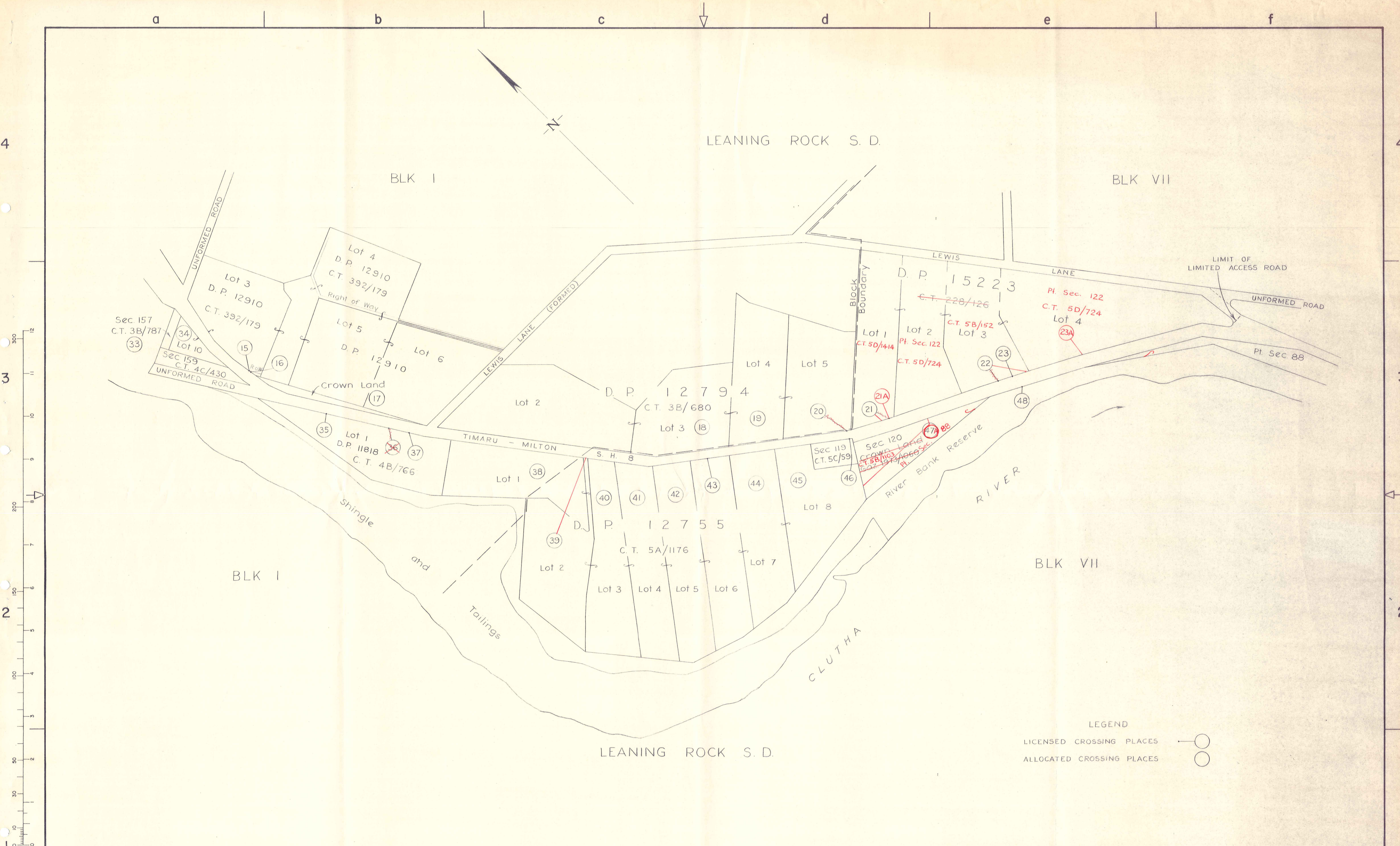
AMENDMENTS	BY	APP'D	DATE

BY	CHECKED BY	DATE
SURVEYED <i>Various</i>		
DRAWN <i>H. G. B.</i>		2-74
CHECKED <i>D. J. Wood</i>		12-74
SUPERVISED <i>A. Stewart</i>		12-74
RECOMMENDED <i>J. H. Wood</i>		

A. G. STIRRAT
CHIEF CIVIL ENGINEER
APPROVED: *[Signature]*
CIVIL ENGINEERING
ALEXANDRA
N. C. McLEOD
Commissioner

S.H. 8, R.D. 16, RS 310
CLYDE - ALEXANDRA SECTION
LIMITED ACCESS ROAD
RP 310/9-34 - RP 310/16-55

ORIGINAL SCALES	5 CHAINS TO 1 INCH	ISSUE
FILE:	S.S. 92	SHEET No.
COPY OF M.O.W. 36599		1
LA 71/76/1		3 IN SHEETS



B-2777 ALEXANDRA

AMENDMENTS	BY	APP'D	DATE

	BY	CHECKED BY	DATE
SURVEYED	Various		
DRAWN	H/E		2-74
CHECKED	R. Wood		12-74
SUPERVISED	J. Powell		12-74
RECOMMENDED	J. Powell		

A. G. STIRRAT
CHIEF CIVIL ENGINEER

APPROVED: *[Signature]*

DISTRICT CIVIL ENGINEER

**Ministry of Works
New Zealand**

CIVIL ENGINEERING
ALEXANDRA

N. C. McLEOD Commissioner

S.H. 8, R.D. 16, RS 310

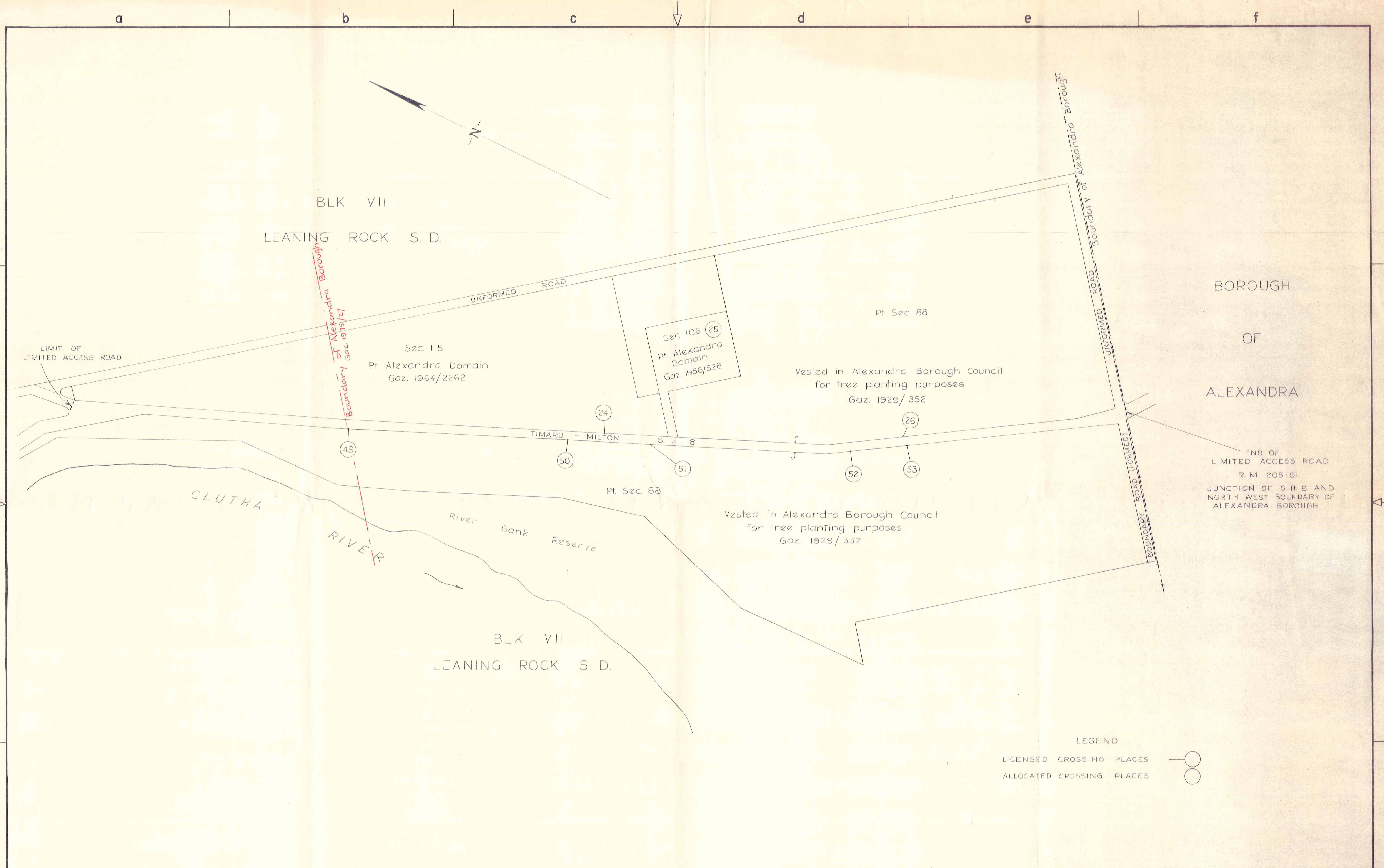
CLYDE - ALEXANDRA SECTION

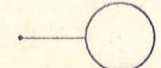
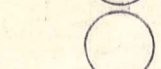
LIMITED ACCESS ROAD

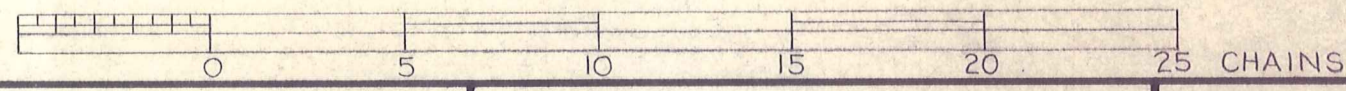
RP 310/9.34 - RP 310/16.55

ORIGINAL SCALES	5 CHAINS TO 1 INCH	ISSUE
FILE:	S.S. 92	SHEET No.
COPY OF M.O.W. 36599		2
LA 71/76/1		3 IN SHEETS


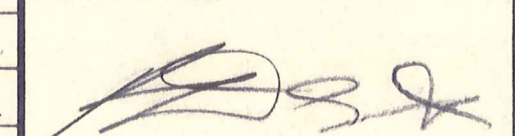
4
3
2
1
ORIGINAL SIZE IN INCHES



LEGEND
 LICENSED CROSSING PLACES 
 ALLOCATED CROSSING PLACES 

GRAPHIC SCALES: 

B 2777 ALEXANDRA

AMENDMENTS			BY	APPD	DATE	A. G. STIRRAT CHIEF CIVIL ENGINEER		 Ministry of Works New Zealand	S.H. 8, R.D. 16, RS 310 CLYDE - ALEXANDRA SECTION LIMITED ACCESS ROAD RP 310/9.34 - RP 310/16.55	ORIGINAL SCALES	5 CHAINS TO 1 INCH		ISSUE
						APPROVED:				CIVIL ENGINEERING ALEXANDRA	FILE:	S.S. 92	SHEET No.
						 DISTRICT CIVIL ENGINEER		N. C. McLEOD Commissioner		COPY OF M.O.W. 36599 LA 71/76/1		3 IN SHEETS	