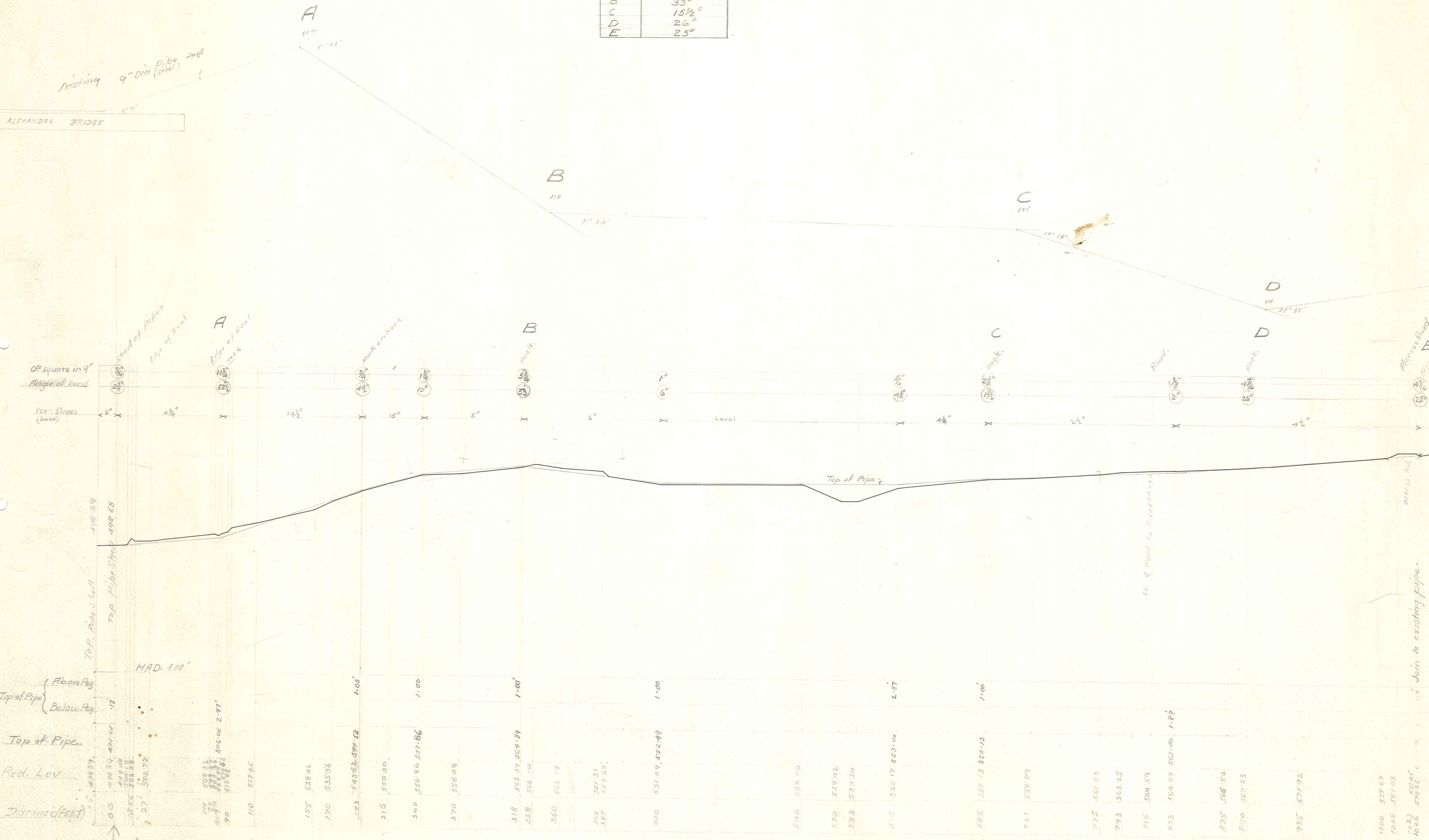


Main Bends.

| Bend | Angle of Bend |
|------|---------------|
| A    | 52 1/2°       |
| B    | 33°           |
| C    | 15 1/2°       |
| D    | 26°           |
| E    | 25°           |



Surveyed, P.M. Sangan, June 1950

Alexandra Borough Pipe Line  
Near Alexandra Bridge

Scale: 40 feet To 1 inch