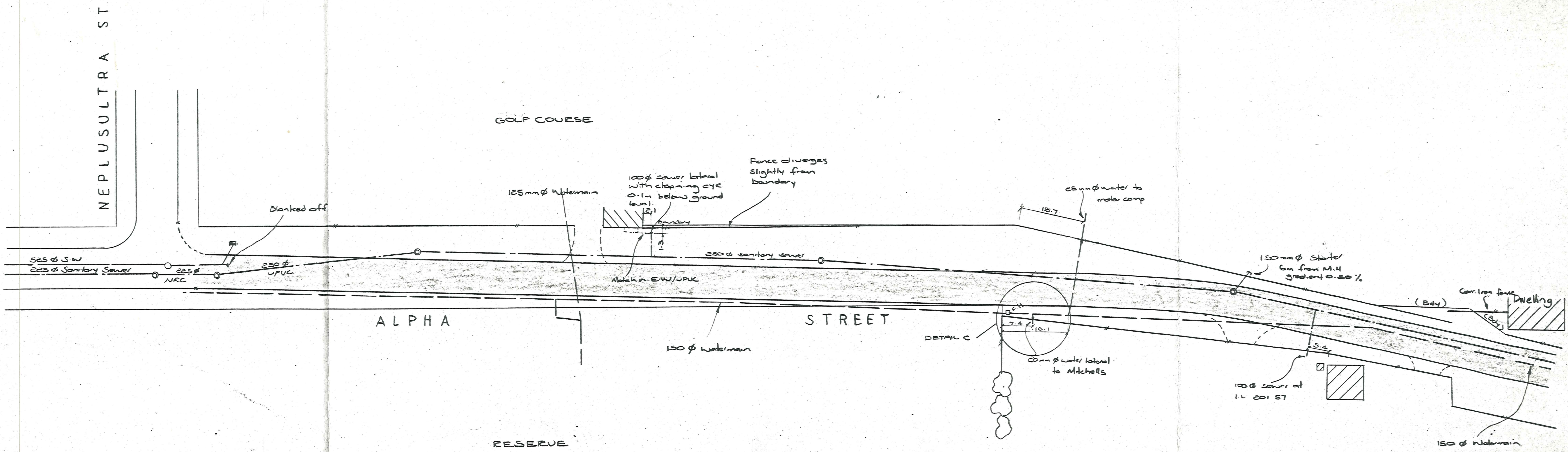
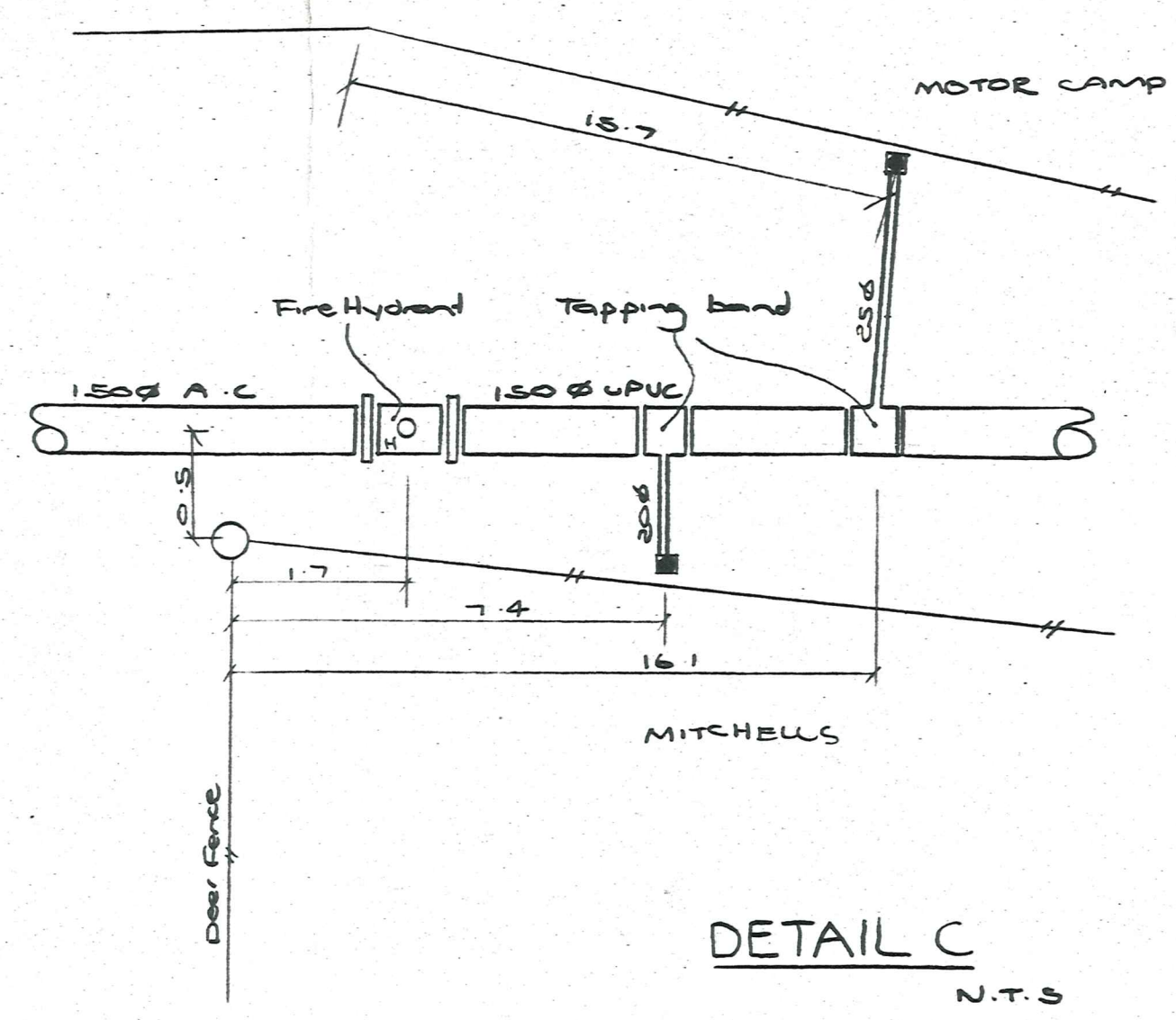


Notes
 1. Refer to Telecom / O.C.E.P.B. for cable locations
 2. Services plotted true to scale 1:500

20 JUL 1989
 CIRC FILE



AS BUILT DRAWING
 14/7/89



No.	Revisions	Date	Appr'd

Designed N. Jelley Date 12/88 Print Date
 Drawn
 Checked
 Approved
 File 4019/1/17 L.B. Contractor

DUFFILL WATTS & KING LTD
 Consulting Civil & Structural Engineers
 Dunedin Invercargill Alexandra Queenstown

Client
CROMWELL BOROUGH COUNCIL

Project
**CONTRACT NO 40
 ALPHA STREET
 EXTENSION**

Sheet Title
AS-BUILT PLAN

Job No. **13549** Sheet No. **7** Revision
 of 8 sheets

ORIGINAL SIZE mm

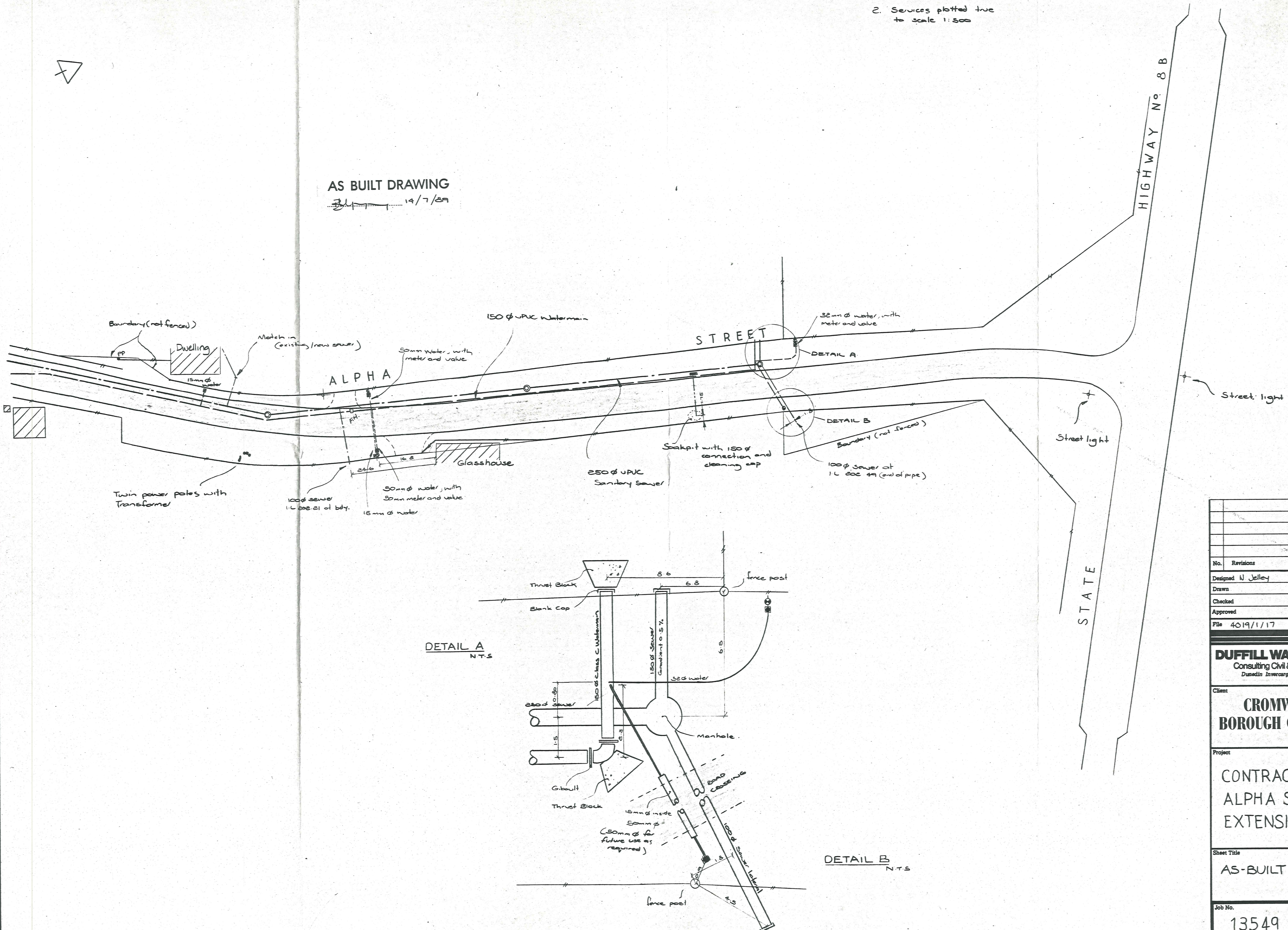


NOTES: 1. Refer to Telecom / P.C.E.P.B for cable locations.

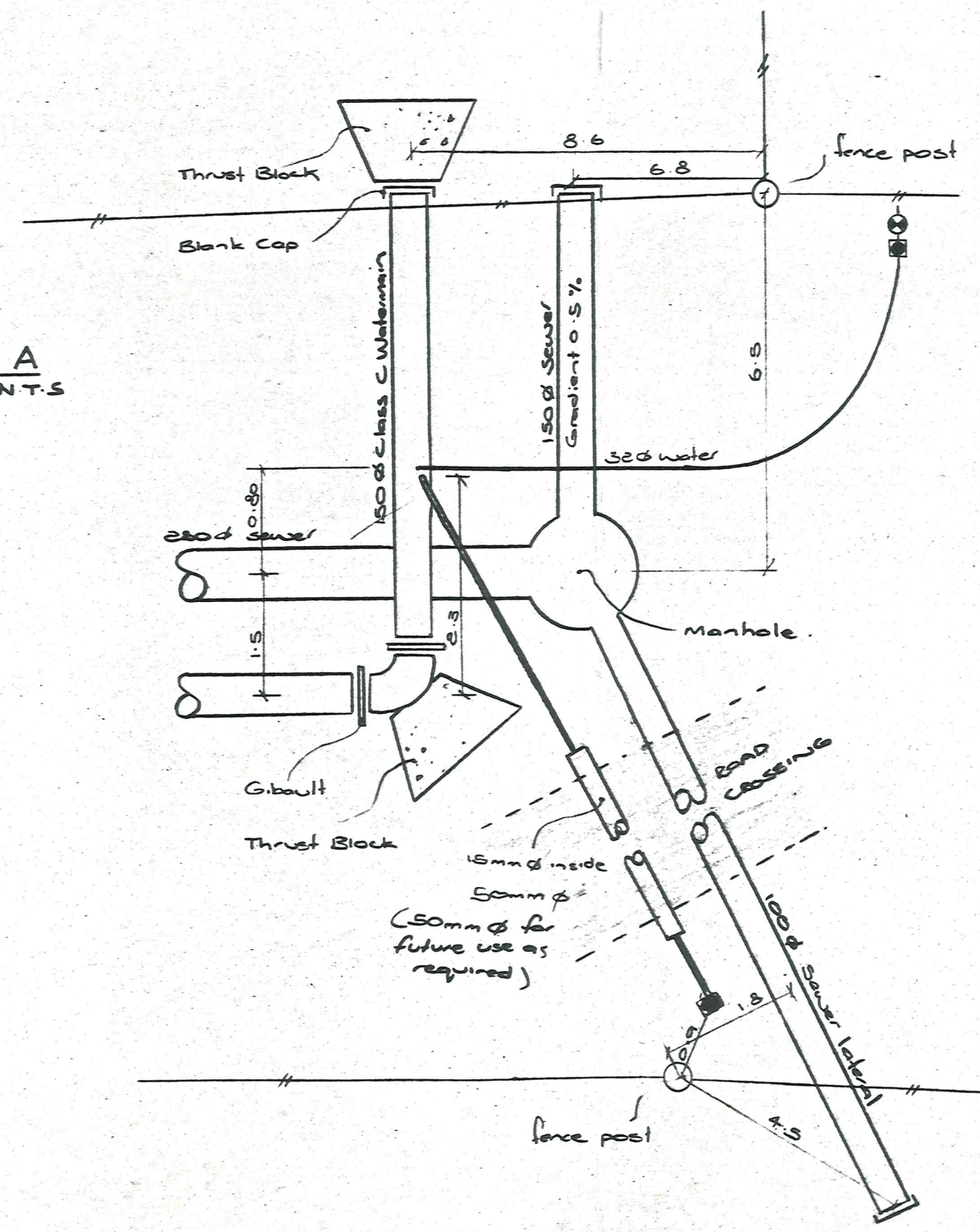
2. Services plotted true to scale 1:500

AS BUILT DRAWING

14/7/89



DETAIL A
N.T.S



DETAIL B
N.T.S

No.	Revisions	Date	Apprd

Designed	N. Jelley	Date	Dec 88	Print Date
Drawn				
Checked				
Approved				
File	4019/1/17	L.B. Contractor		

DUFFILL WATTS & KING LTD
 Consulting Civil & Structural Engineers
 Dunedin Invercargill Alexandra Queenstown

Client
CROMWELL BOROUGH COUNCIL

Project
**CONTRACT NO 40
 ALPHA STREET
 EXTENSION**

Sheet Title
AS-BUILT PLAN

Job No.	13549	Sheet No.	8	Revision	
		of 8	shts		

ORIGINAL SIZE mm