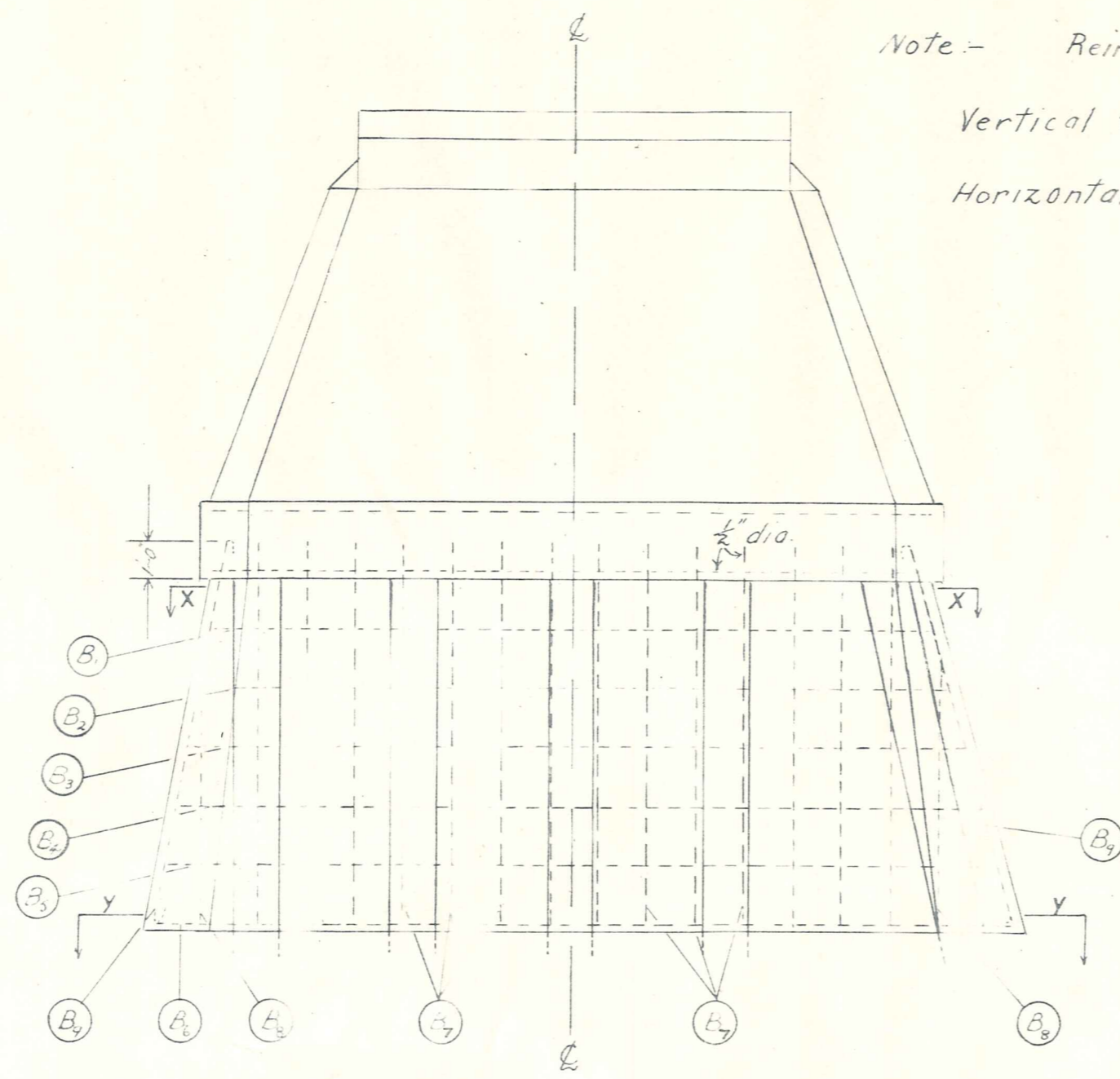
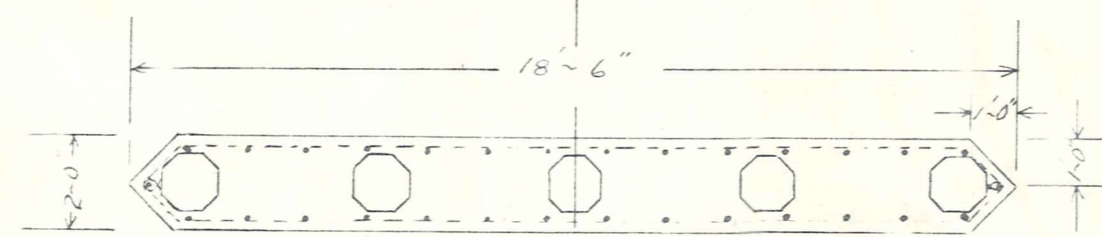


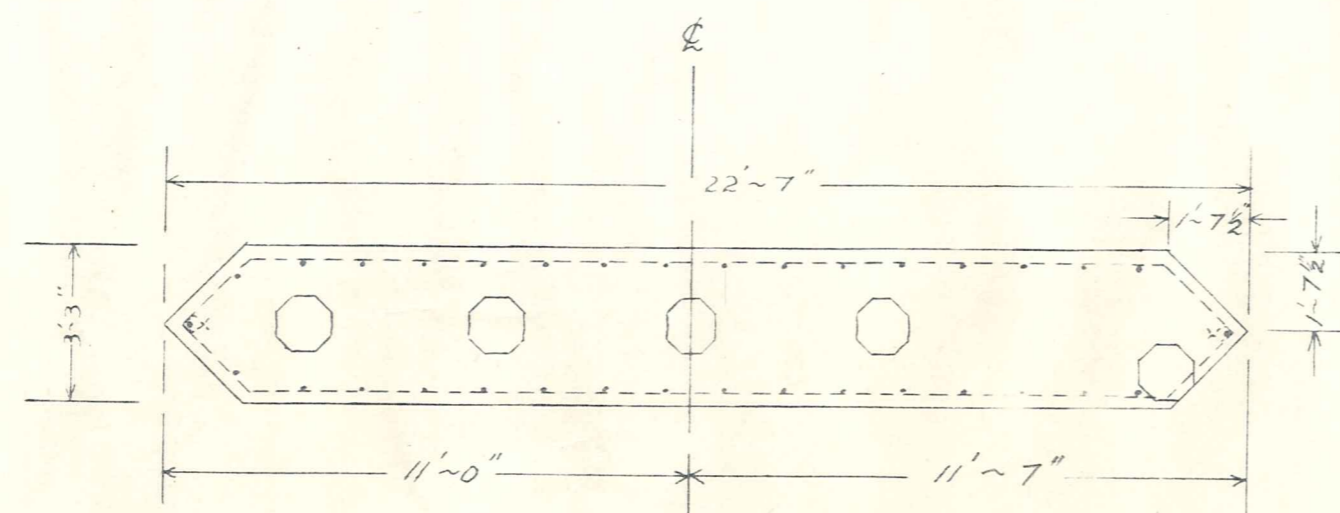
SIDE ELEVATION



FRONT ELEVATION

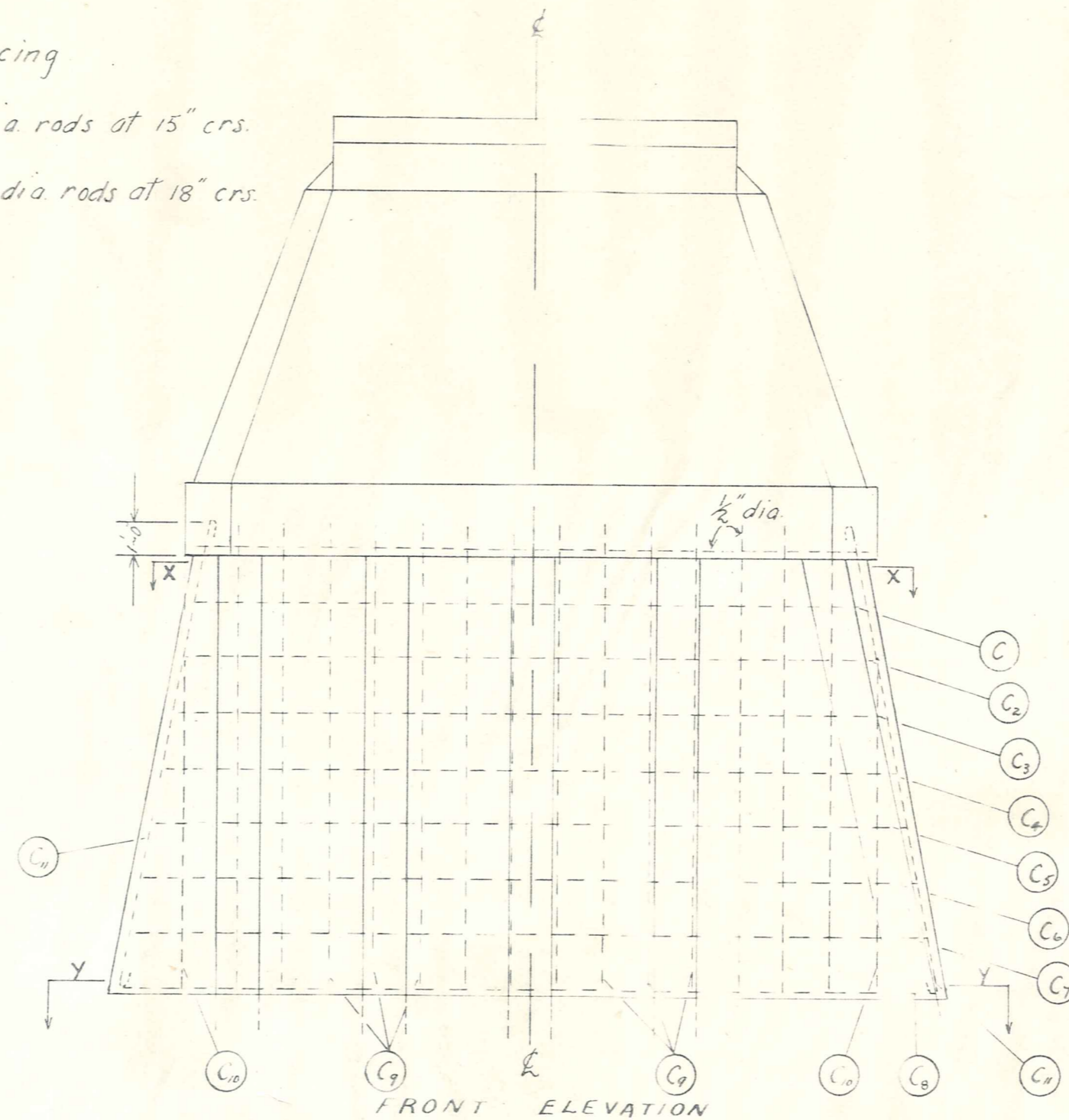


SECTION X-X

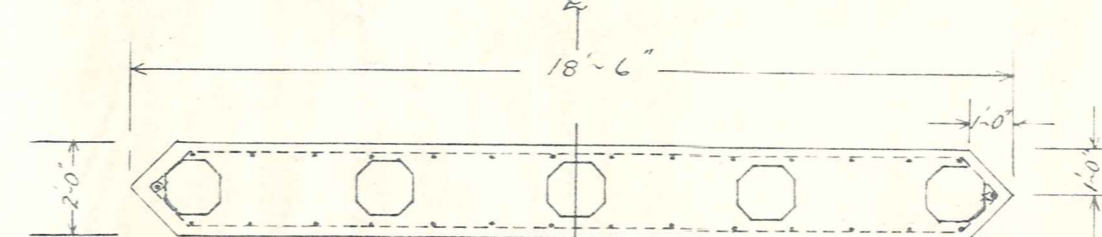


SECTION Y-Y

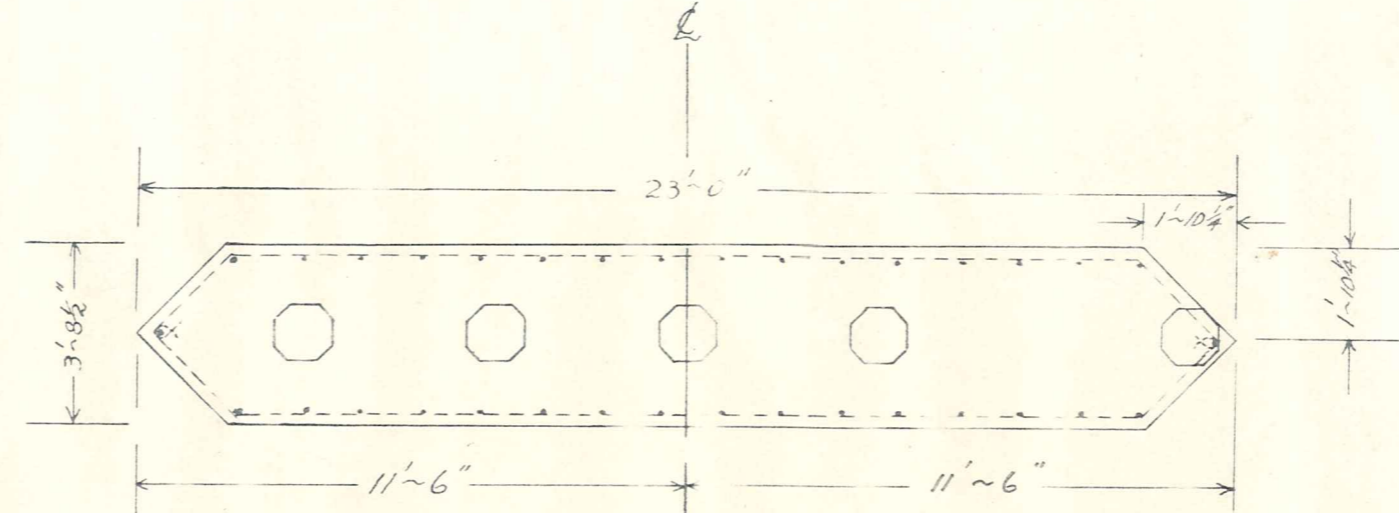
DETAIL OF PIER B (SEE PLAN PWD 69377)



FRONT ELEVATION

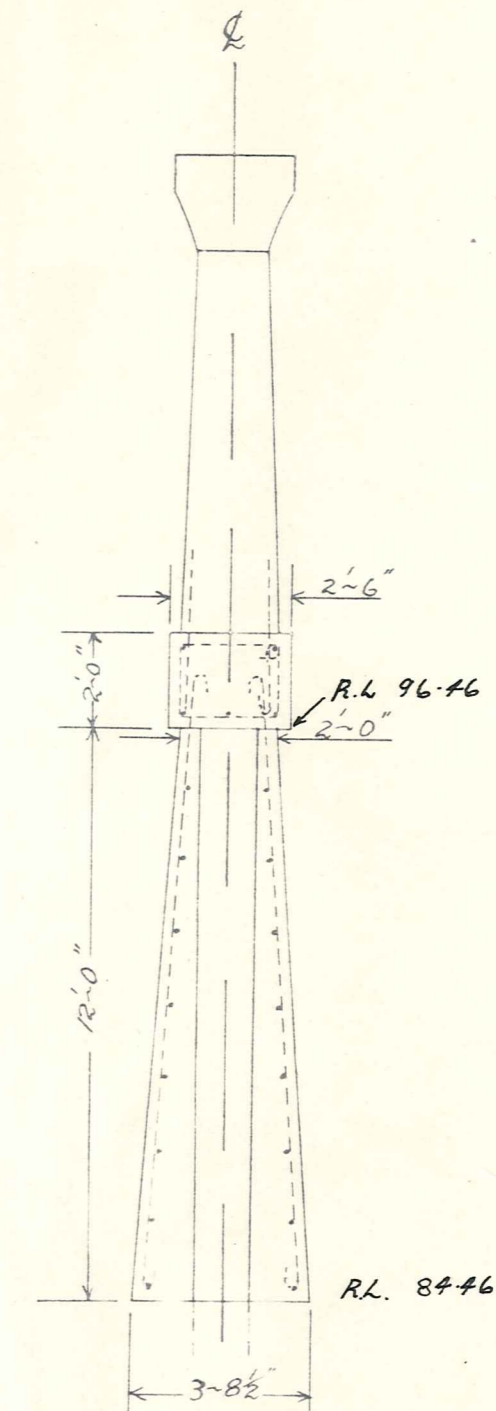


SECTION X-X



SECTION Y-Y

DETAIL OF PIER C (SEE PLAN PWD 69377)



SIDE ELEVATION

Scale :- 1/4 in. to 1 ft

VINCENT COUNTY COUNCIL

CAMP HILL BRIDGE PIER REPAIR

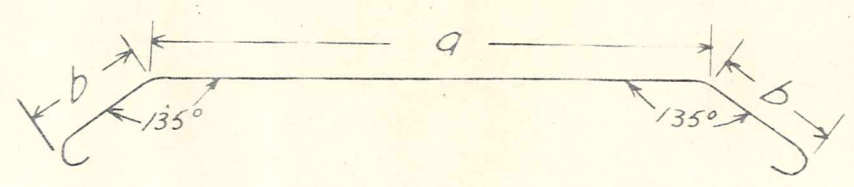
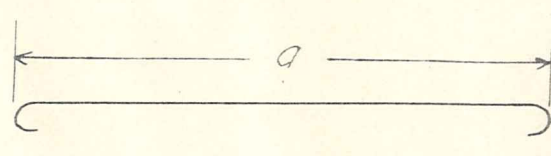
COUNTY ENGINEER

No 32/1

	NAME	DATE
SURVEYED		
DRAWN		
DESIGNED		
CALCULATED		
CHECKED		

*M. J. Mason*



STEEL							SCHEDULE
Rod	Diam.	Type	No. of	Cut Length	a	b	Shape
B <sub>1</sub>	1/2"	I	2	20' ~ 3"	16' ~ 11"	1' ~ 4"	 <p>Type I</p>
B <sub>2</sub>	1/2"	I	2	21' ~ 0"	17' ~ 4"	1' ~ 6"	
B <sub>3</sub>	1/2"	I	2	21' ~ 9"	17' ~ 10"	1' ~ 7"	
B <sub>4</sub>	1/2"	I	2	22' ~ 7"	18' ~ 4"	1' ~ 9"	
B <sub>5</sub>	1/2"	I	2	23' ~ 4"	18' ~ 10"	1' ~ 11"	
B <sub>6</sub>	1/2"	I	2	24' ~ 1"	19' ~ 3"	2' ~ 1"	
B <sub>7</sub>	1/2"	II	28	10' ~ 6"	9' ~ 9"		
B <sub>8</sub>	1/2"	II	4	6' ~ 9"	6' ~ 0"		
B <sub>9</sub>	1/2"	II	2	10' ~ 9"	10' ~ 0"		
C <sub>1</sub>	1/2"	I	2	20' ~ 2"	16' ~ 10"	1' ~ 3 1/2"	 <p>Type II</p>
C <sub>2</sub>	1/2"	I	2	20' ~ 10"	17' ~ 2"	1' ~ 5 1/2"	
C <sub>3</sub>	1/2"	I	2	21' ~ 6"	1' ~ 7"	1' ~ 7"	
C <sub>4</sub>	1/2"	I	2	22' ~ 2"	17' ~ 11"	1' ~ 9"	
C <sub>5</sub>	1/2"	I	2	22' ~ 10"	18' ~ 4"	1' ~ 10 1/2"	
C <sub>6</sub>	1/2"	I	2	23' ~ 6"	18' ~ 8"	2' ~ 0 1/2"	
C <sub>7</sub>	1/2"	I	2	24' ~ 2"	19' ~ 1"	2' ~ 2"	
C <sub>8</sub>	1/2"	I	2	24' ~ 10"	19' ~ 5"	2' ~ 4"	
C <sub>9</sub>	1/2"	II	28	13' ~ 6"	12' ~ 9"		
C <sub>10</sub>	1/2"	II	4	9' ~ 9"	9' ~ 0"		
C <sub>11</sub>	1/2"	II	2	13' ~ 9"	13' ~ 0"		

All dimensions outside to outside.

*Handwritten signature*

N<sup>o</sup> 32/1

# CAMP HILL BRIDGE PIER REPAIR