

a b c d e f

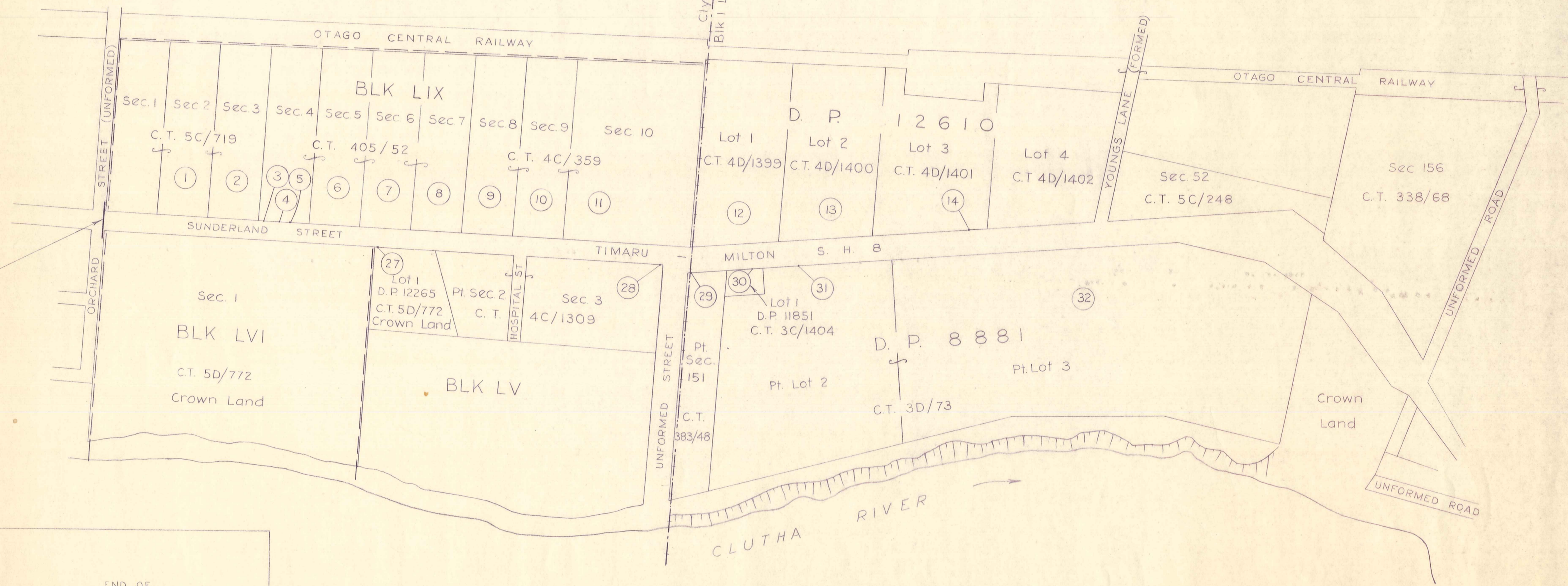
4

TOWN OF CLYDE

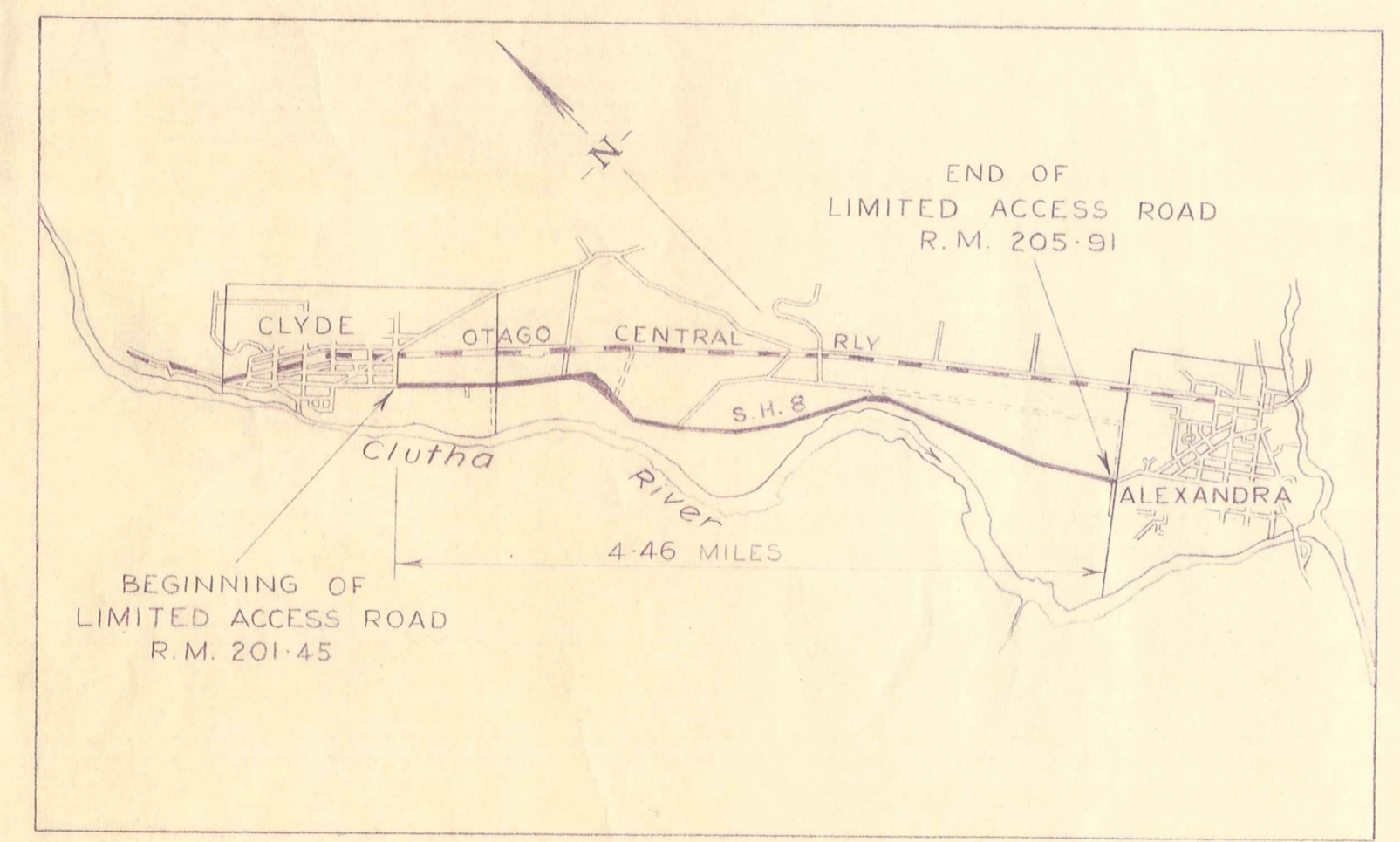
LEANING ROCK S. D.

BLK I

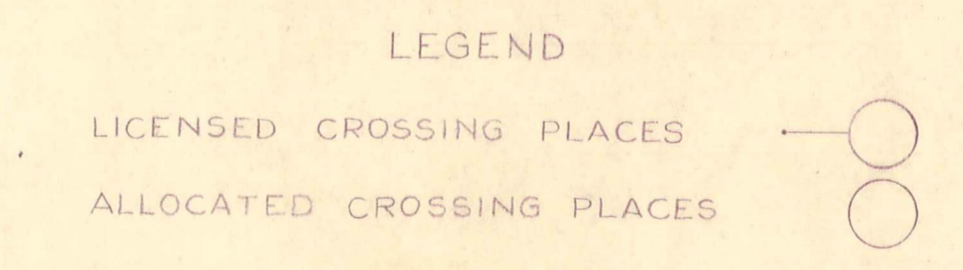
3



BEGINNING OF LIMITED ACCESS ROAD  
R.M. 201-45  
JUNCTION OF S.H. 8 AND SOUTH BOUNDARY OF ORCHARD STREET

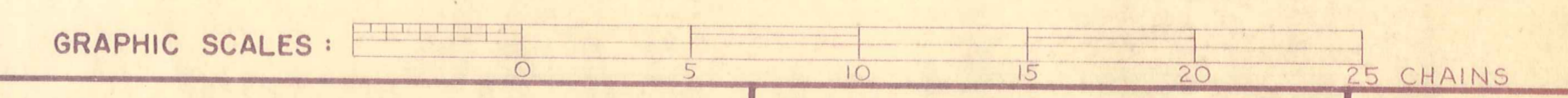


LOCALITY PLAN  
SCALE: 1 MILE TO 1 INCH

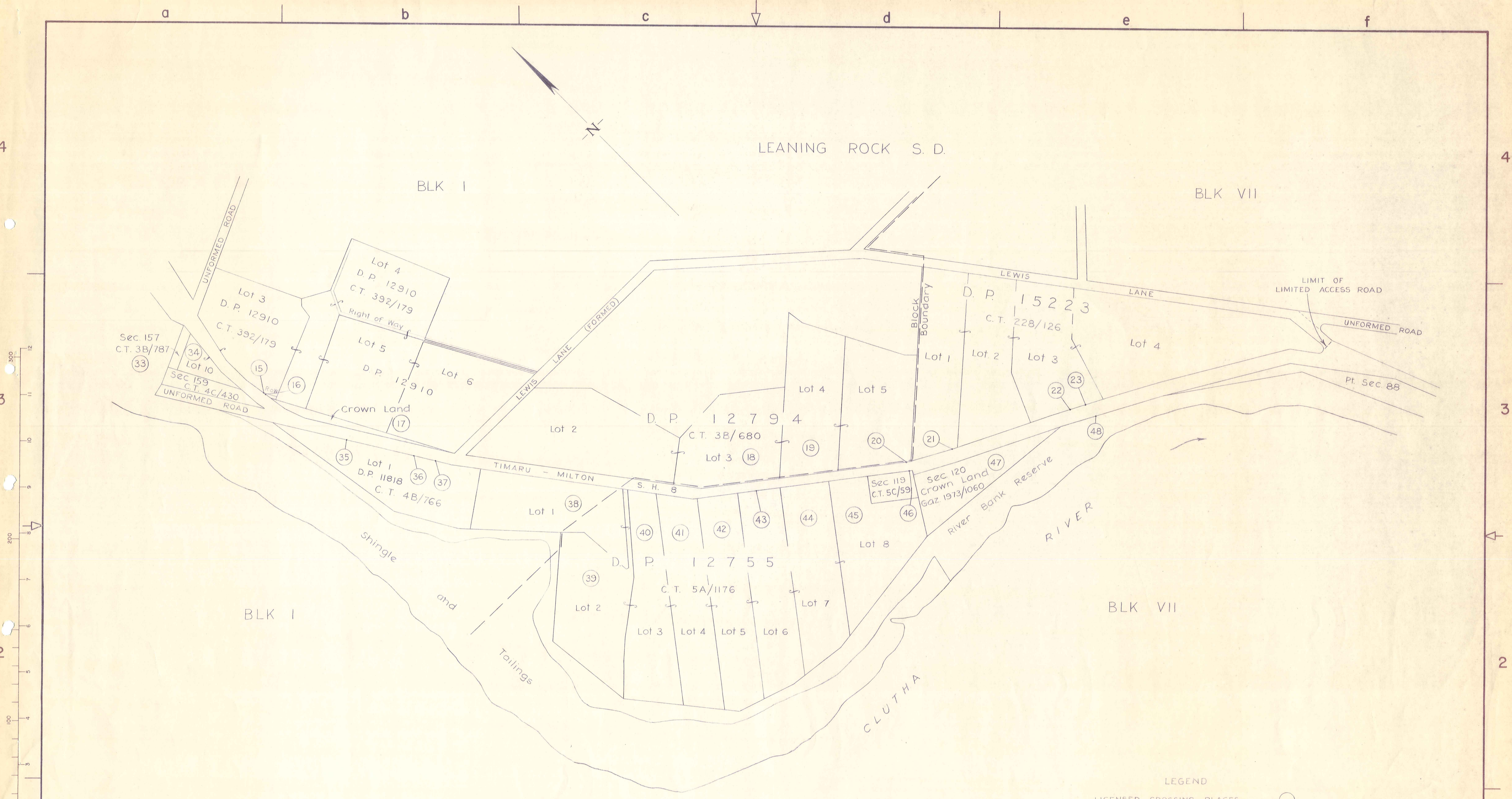


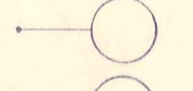

ORIGINAL SIZE  
mm  
INCHES

B 2777 ALEXANDRA



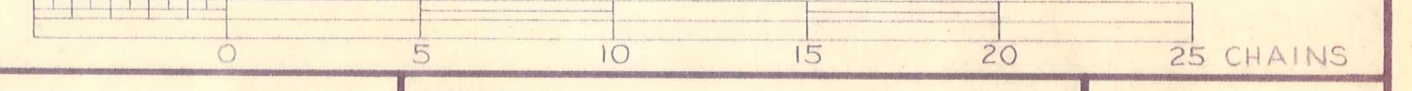
				BY A. G. STIRRAT CHIEF CIVIL ENGINEER		 <b>Ministry of Works New Zealand</b>	S.H. 8, R:D. 16, RS 310		ORIGINAL SCALES 5 CHAINS TO 1 INCH		ISSUE	
				CHECKED BY 4/9/74			CLYDE - ALEXANDRA SECTION		FILE: S.S. 92		SHEET No.	
				DATE 2-74		LIMITED ACCESS ROAD		COPY OF M.O.W. 36599		1		
				APPROVED: 		RP 310/9.34 - RP 310/16.55		LA 71/76/1		3 IN SHEETS		
				12-74		N. C. McLEOD Commissioner						
AMENDMENTS				BY	APPD	DATE						


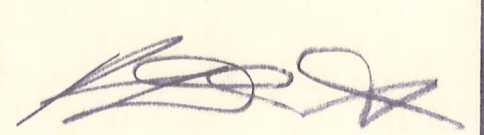


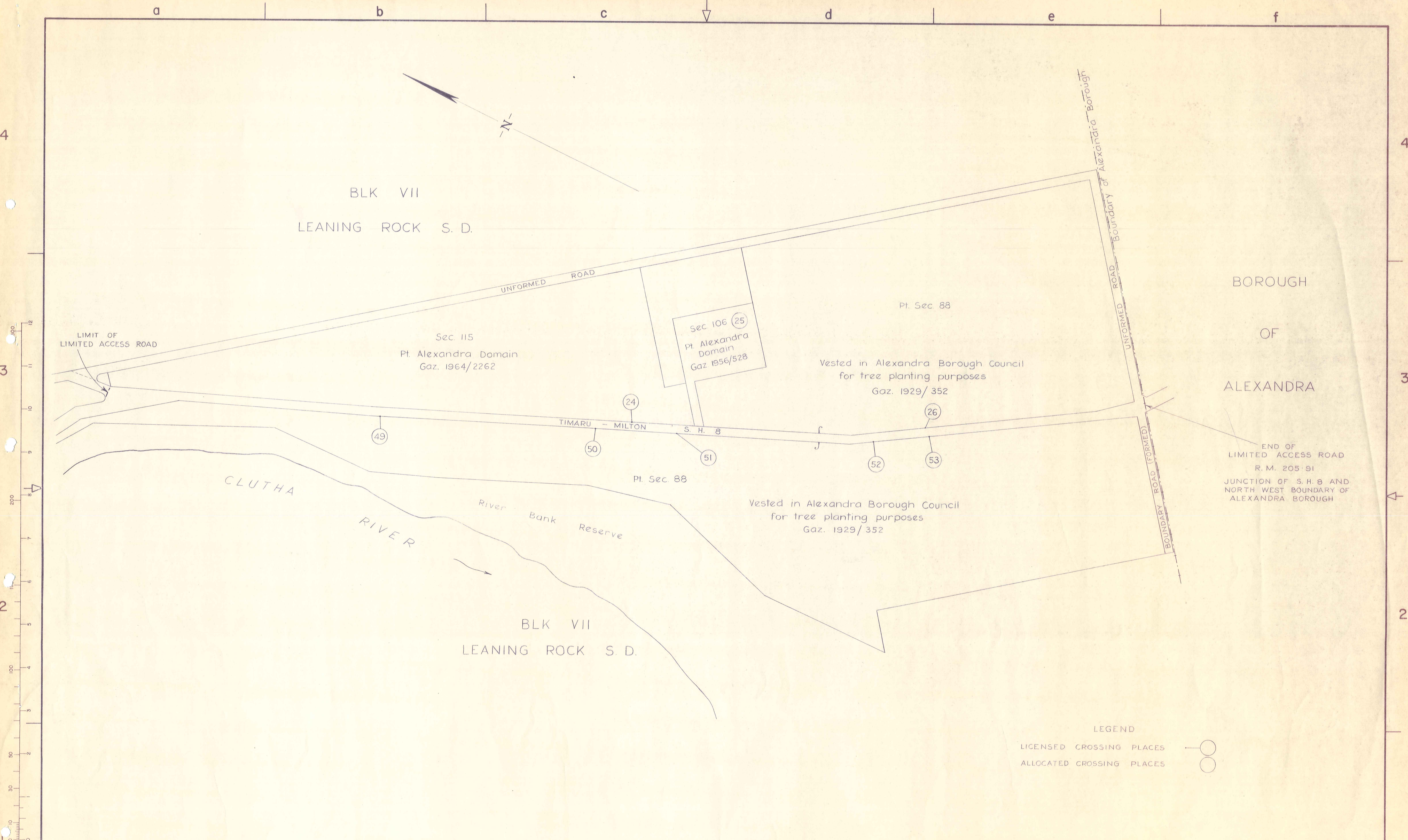
LEGEND  
 LICENSED CROSSING PLACES   
 ALLOCATED CROSSING PLACES 

ORIGINAL SIZE INCHES  
 350  
 300  
 250  
 200  
 150  
 100  
 50  
 0

B-2777 ALEXANDRA

GRAPHIC SCALES: 

				BY	CHECKED BY	DATE	A. G. STIRRAT CHIEF CIVIL ENGINEER	 <b>Ministry of Works New Zealand</b>	S.H. 8, R.D. 16, RS 310 CLYDE - ALEXANDRA SECTION LIMITED ACCESS ROAD RP 310/9.34 - RP 310/16.55	ORIGINAL SCALES	5 CHAINS TO 1 INCH		ISSUE
				SURVEYED	Various		APPROVED:			CIVIL ENGINEERING ALEXANDRA	FILE:	S.S.92	SHEET No. 2
				DRAWN	H.T.C.	2-74	 DISTRICT CIVIL ENGINEER	N. C. McLEOD Commissioner	LA 71/76/1	COPY OF M.O.W. 36599			3 IN SHEETS
				CHECKED	R.L. Hunt	12-74				AMENDMENTS	BY	APPD	
				SUPERVISED	J. H. Powell	12-74							
				RECOMMENDED	J. H. Powell								



ORIGINAL SIZE INCHES

0 10 20 30 40 50 60 70 80 90 100 110 120

LEGEND

LICENSED CROSSING PLACES

ALLOCATED CROSSING PLACES

B 2777 ALEXANDRA

GRAPHIC SCALES:

				BY	CHECKED BY	DATE	A. G. STIRRAT CHIEF CIVIL ENGINEER	 Ministry of Works New Zealand	S.H. 8, R.D. 16, RS 310		ORIGINAL SCALES	5 CHAINS TO 1 INCH	ISSUE
				SURVEYED	Various					CLYDE - ALEXANDRA SECTION		FILE:	S.S. 92
				DRAWN	476	2-74	APPROVED:	 N. C. McLEOD Commissioner	LIMITED ACCESS ROAD		COPY OF M.O.W. 36599		3
				CHECKED	<i>J. H. Wood</i>	12-74			RP 310/9-34 - RP 310/16-55		LA 71/76/1		
				SUPERVISED	<i>J. H. Wood</i>	12-74							
				RECOMMENDED	<i>J. H. Wood</i>								
AMENDMENTS				BY	APPD	DATE	DISTRICT CIVIL ENGINEER						