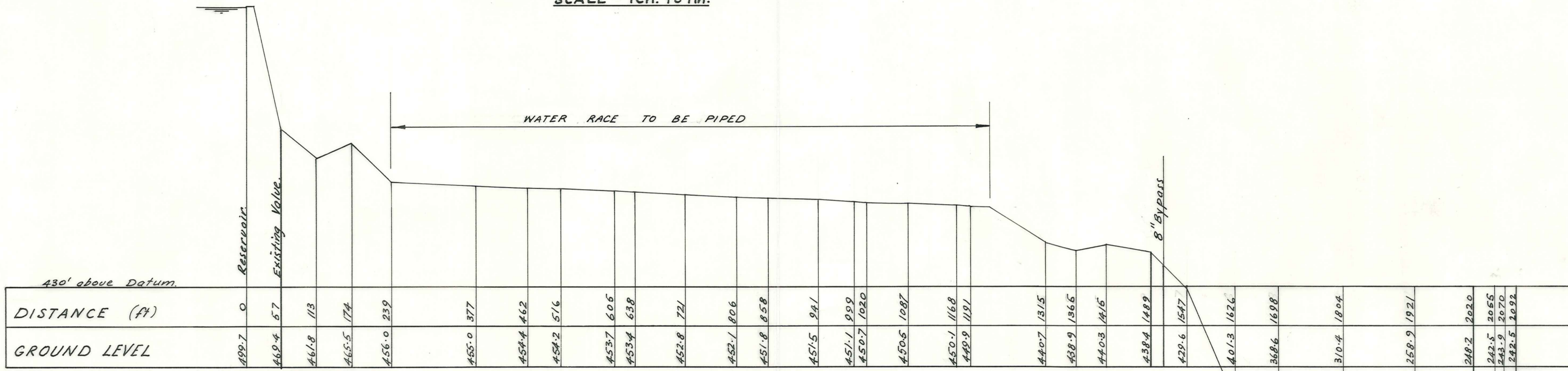
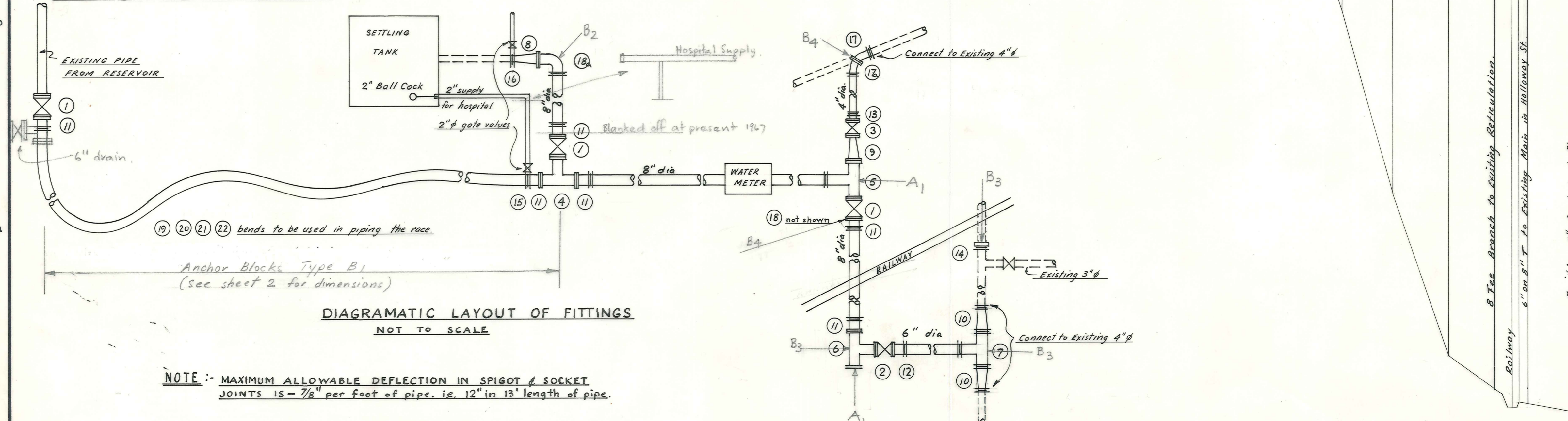


| Mark | LIST OF SPECIALS | No. of |
|------|--|--------|
| 1 | 8" Sluice Valve Flanged | 3 |
| 2 | 6" Sluice Valve " | 1 |
| 3 | 4" Sluice Valve " | 1 |
| 4 | Tees 8" on 8" Flanged | 1 |
| 5 | " 8" on 8" Flanged main ps. branch | 1 |
| 6 | " 6" on 8" Flanged | 1 |
| 7 | " 6" on 6" P.e. | 1 |
| 8 | Reducers 8" to 6" 8" end fl. 6" end ps. | 1 |
| 9 | " 8" to 4" Flanged | 1 |
| 10 | " 6" to 4" Plain ends. | 2 |
| 11 | Flanged adaptors 8" | 6 |
| 12 | " " 6" | 1 |
| 13 | " " 4" | 1 |
| 14 | Gibault Blank Cap 6" | 1 |
| 15 | Elongated Gibault (Tap 2" ϕ) 8" | 1 |
| 16 | " Bends 4" ϕ 45° Flanged & plain end | 1 |
| 17 | " Bends 4" ϕ 11 1/4° Fl. & plain ends | 1 |
| 17a | " 8" ϕ 90° Flanged | 1 |
| 18a | " 8" ϕ 90° Flanged & p.e. | 1 |
| 19 | " 8" ϕ 90° p.e. | 1 |
| 20 | " 8" ϕ 11 1/4° p.e. | 4 |
| 21 | " 8" ϕ 22 1/2° p.e. | 2 |
| 22 | " 8" ϕ 45° p.e. | 2 |
| 23 | Gibault Joints 8" | 25 |
| 24 | " " 6" | 4 |
| 25 | " " 4" | 5 |
| 26 | Sluice Valve Boxes (standard) | 5 |
| 27 | Blank Flanges 8" ϕ | 1 |
| 28 | " " 6" ϕ | 1 |

8" DIA. PIPELINE FROM RESERVOIR
SCALE - 1ch. to 1in.



LONG SECTION
Scales - Horizontal - 2 ch. to 1 inch
Vertical - 20 ft to 1 inch.



DIAGRAMMATIC LAYOUT OF FITTINGS
NOT TO SCALE

NOTE :- MAXIMUM ALLOWABLE DEFLECTION IN SPIGOT & SOCKET JOINTS IS - 7/8" per foot of pipe, i.e. 12" in 13' length of pipe.

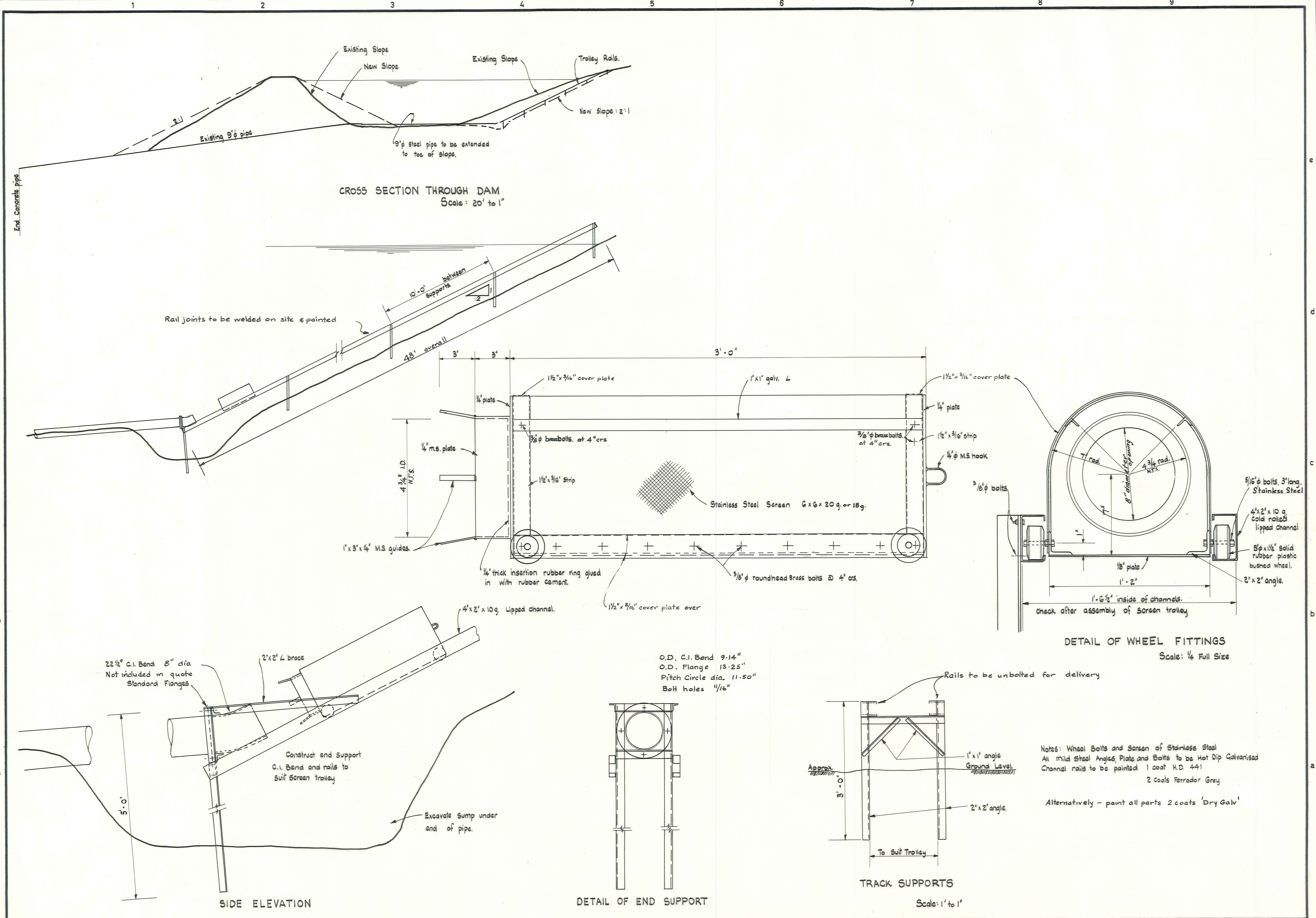
VINCENT COUNTY COUNCIL

CLYDE WATER SUPPLY TRUNK MAIN

| AMENDMENTS | | | | | NAME | DATE |
|------------|----|------|-------------|--------|----------------------------|----------|
| No. | By | Date | Description | Apprd. | | |
| | | | | | Surveyed G. Dillon | March 67 |
| | | | | | Drawn | April 67 |
| | | | | | Calculations I. B. Fairman | Apr 67 |
| | | | | | Traced C. J. D. | May 67 |
| | | | | | Checked | |
| | | | | | Approved | |

DUFFILL, WATTS & KING
CONSULTING CIVIL & STRUCTURAL ENGINEERS
DUNEDIN & INVERCARGILL N.Z.

File 4/65
JOB No. 4741
L. Bk. 2.18
F. Bk.
Sheet / of Sheets



Notes: Wheel Bolts and Screen of Stainless Steel
 All mild Steel Angles, Plates and Bolts to be Hot Dip Galvanised
 Channel rails to be painted 1 coat H.D. 441
 2 Coats Ferrador Grey
 Alternatively - paint all parts 2 coats 'Dry Gal'

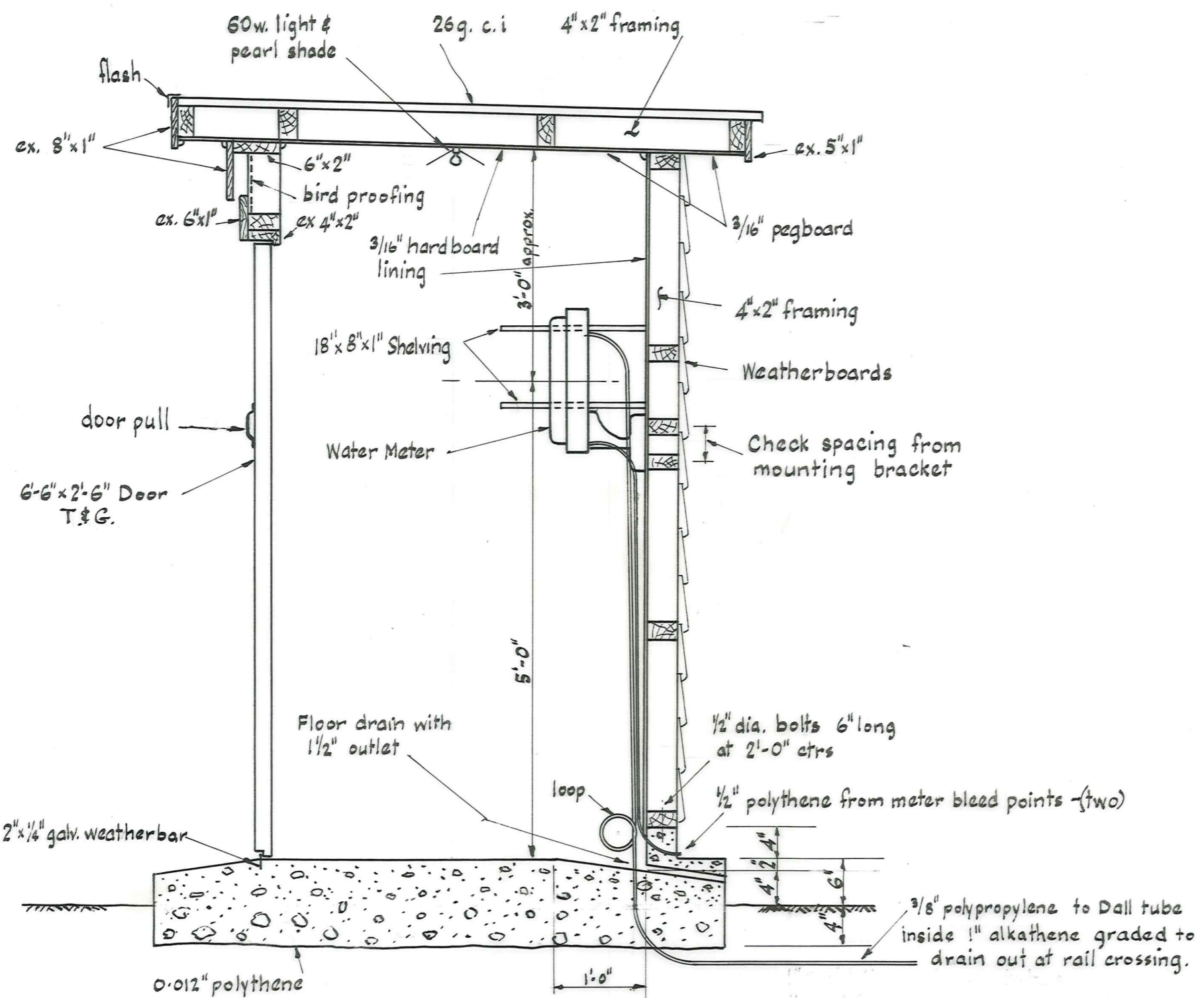
VINCENT COUNTY COUNCIL

CLYDE WATER SUPPLY INTAKE SCREEN

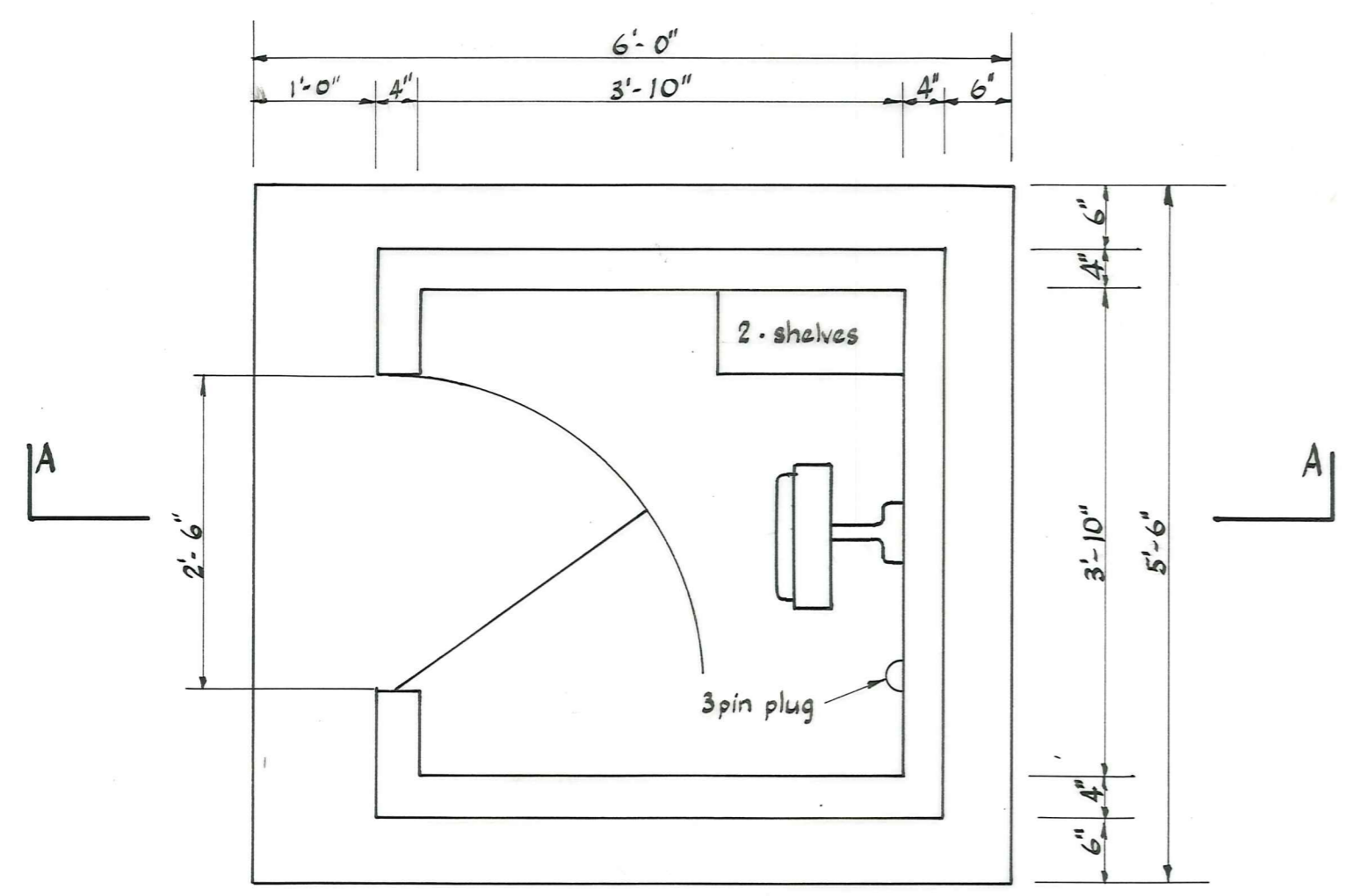
| AMENDMENTS | | | | | NAME | DATE |
|------------|----|--------|-------------------------------|--------|--------------|----------------|
| No. | By | Date | Description | Apprd. | Surveyed | |
| | | 7-9-67 | Cover plates for screen edges | | Drawn | G. Dillon 8/67 |
| | | | Dry Galv painting | | Calculations | |
| | | | | | Traced | R.W. Adam 8/67 |
| | | | | | Checked | |
| | | | | | Approved | |

DUFFILL, WATTS & KING
 CONSULTING CIVIL & STRUCTURAL ENGINEERS
 DUNEDIN & INVERCARGILL N.Z.

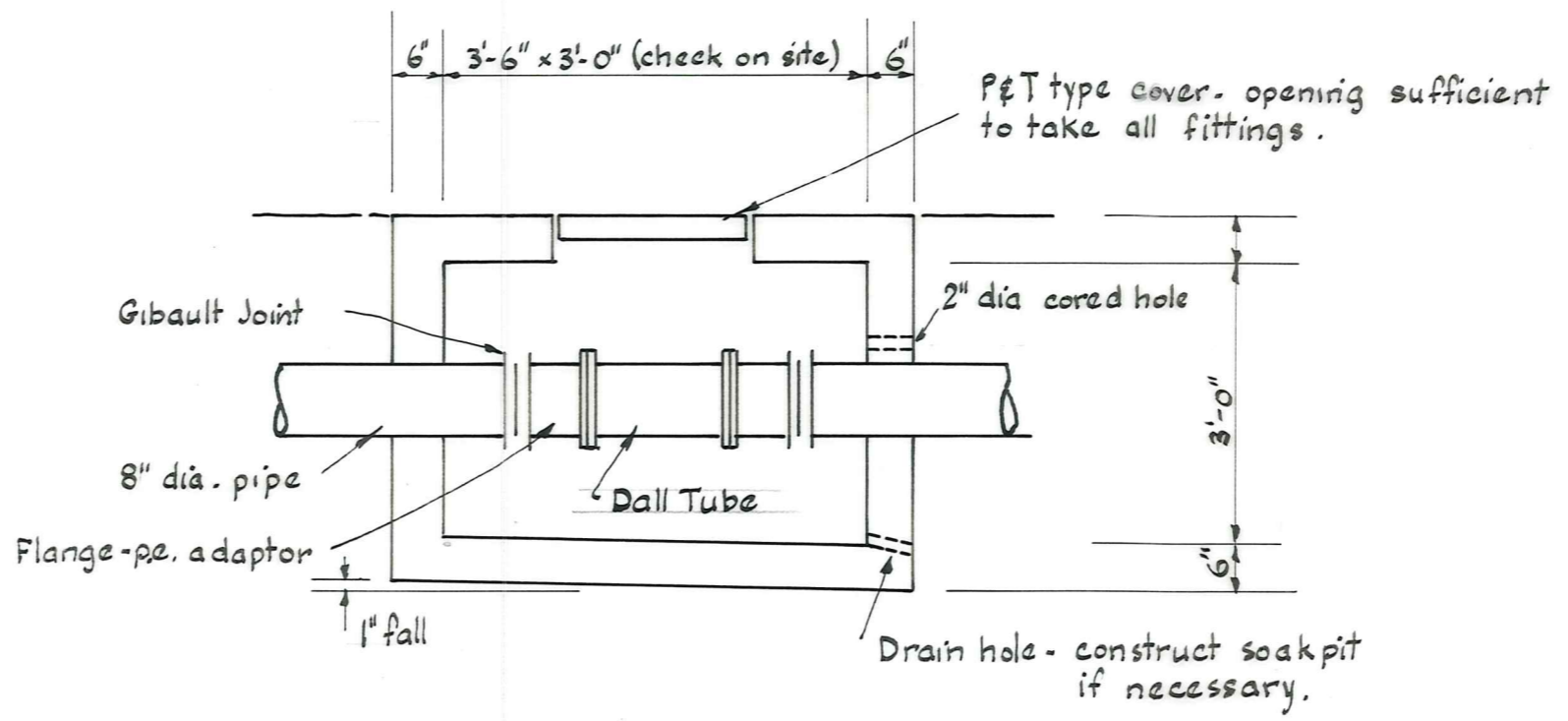
File #/57 L.B.K.
 F.B.K.
 JOB No. 4741
 Sheet 2 of 2 Sheets



SECTION A-A
Scale - 3/4" to 1'-0"



PLAN
Scale - 3/4" to 1'-0"



SECTION - DALL TUBE BOX.
Scale - 1/2" to 1'-0"

CONSTRUCTION NOTES

Meter houses.
Construct as per plan, paint with red lead, undercoat & topcoat. Fit door with Yale type lock. Install power connections, switch board, light & heating point to O.C.E.P.B. requirements, and fully wire up. Fit 150 watt heater at floor level near pipes from Dall Tube. Meter & heater to plug in to 3 pin point. Install meters to manufacturers instructions.

Dall Tube
Construct box as per plan. Ensure that all equipment is on site & check all sizes before draining & cutting watermain. See sheet 4741/1 for location of Dall tube box. Check direction of flow before installing tube.

| AMENDMENTS | | | | | NAME | DATE |
|------------|----|------|-------------|--------|------|------|
| No. | By | Date | Description | Apprd. | | |
| | | | | | | |
| | | | | | | |
| | | | | | | |
| | | | | | | |
| | | | | | | |