



Alignment up to this line
 same as Cromwell Development
 Committee's Scheme 1
 See 7/75/2/5924/1 & 2

Curve A1
 R = 1000 m
 S.L. = 55 m
 Max S.E. = 3%

Kowarou River

ADVANCE COPY

UNCHECKED

AMENDMENTS	BY	APPD. DATE

BY	CHECKED	DATE

APPROVED
 R. D. Grant
 Dist. Civil Eng.

Ministry of Works
 and Development
 N.C. McLEOD
 Commissioner

S.H. 8. R.D. 16 R.S. 295
 CROMWELL BRIDGE APPROACHES
 LINE 'A' PLAN 1000 - 2100

ORIGINAL SCALES	Approx 1:2000	FILE
JOB	CODE	SHEET
7/75/3	15704	
REVISION		

LOCAL OR TRACING NO.





Curve A2
 R = 1000m
 SL = 55m
 Max SE = 3%

Scenic Rd

2500

3000

Clutho River

ADVANCE COPY

UNCHECKED

AMENDMENTS	BY	APPR.	DATE

BY CHECKED DATE

APPROVED

R. D. Grant
 Dist Civil Eng.

Ministry of Works and Development

N.C. McLEOD
 Commissioner

S.H. 8. R.D. 16 R.S. 295
 CROMWELL BRIDGE APPROACHES
 LINE 'A' PLAN 2200-3300

ORIGINAL SCALES	Approx 1:2000	FILE
JOB	CODE	SHEET
7/75/31570A		
REVISION		





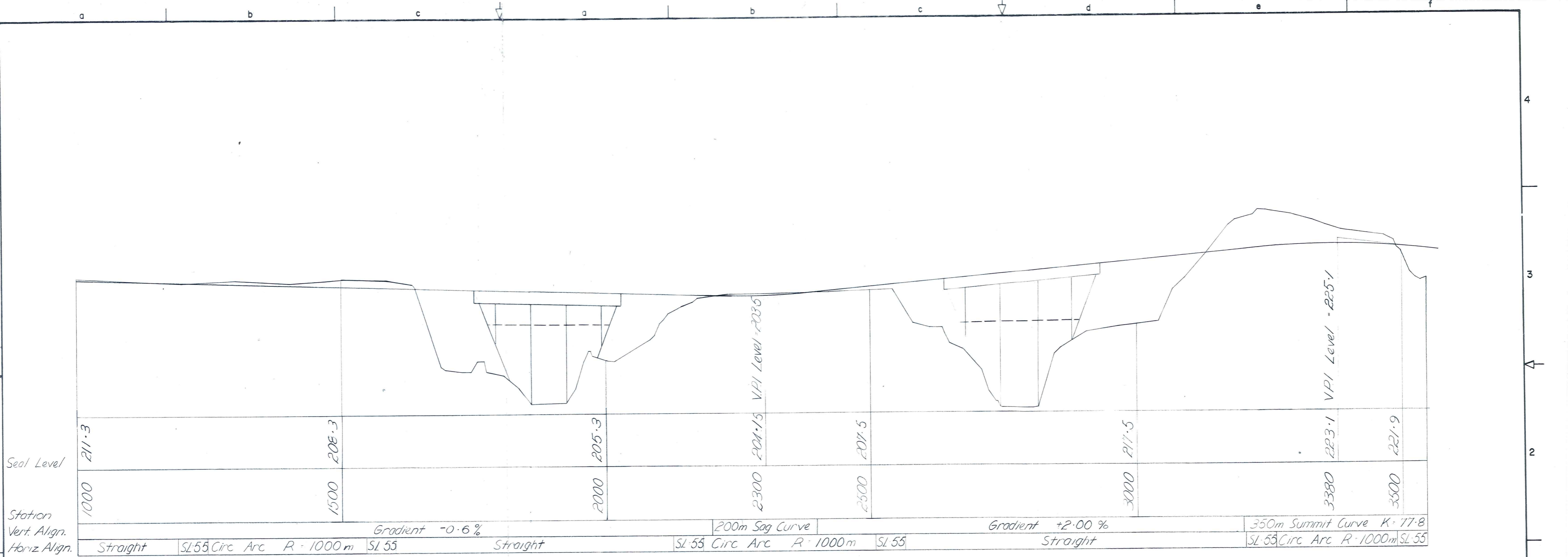
ADVANCE COPY UNCHECKED
4

AMENDMENTS	BY	APPRD.	DATE

BY CHECKED DATE
APPROVED :-
R.D. Grant
Dist. Civil Eng
N.C.M. LEOD, Commissioner

Ministry of Works and Development
S.H.8. R.D.16 R.S.295
CROMWELL BRIDGE APPROACHES
LAKE EDGE MELMORE TERRACE

ORIGINAL SCALES	1:2000	ISSUE
FILE:		SHEET NO
		IN SHEETS



PROFILE LINE 'A'

SCALES: Horizontal = 1:5,000
Vertical = 1:1,000

GRAPHIC SCALES

ADVANCE COPY UNCHECKED

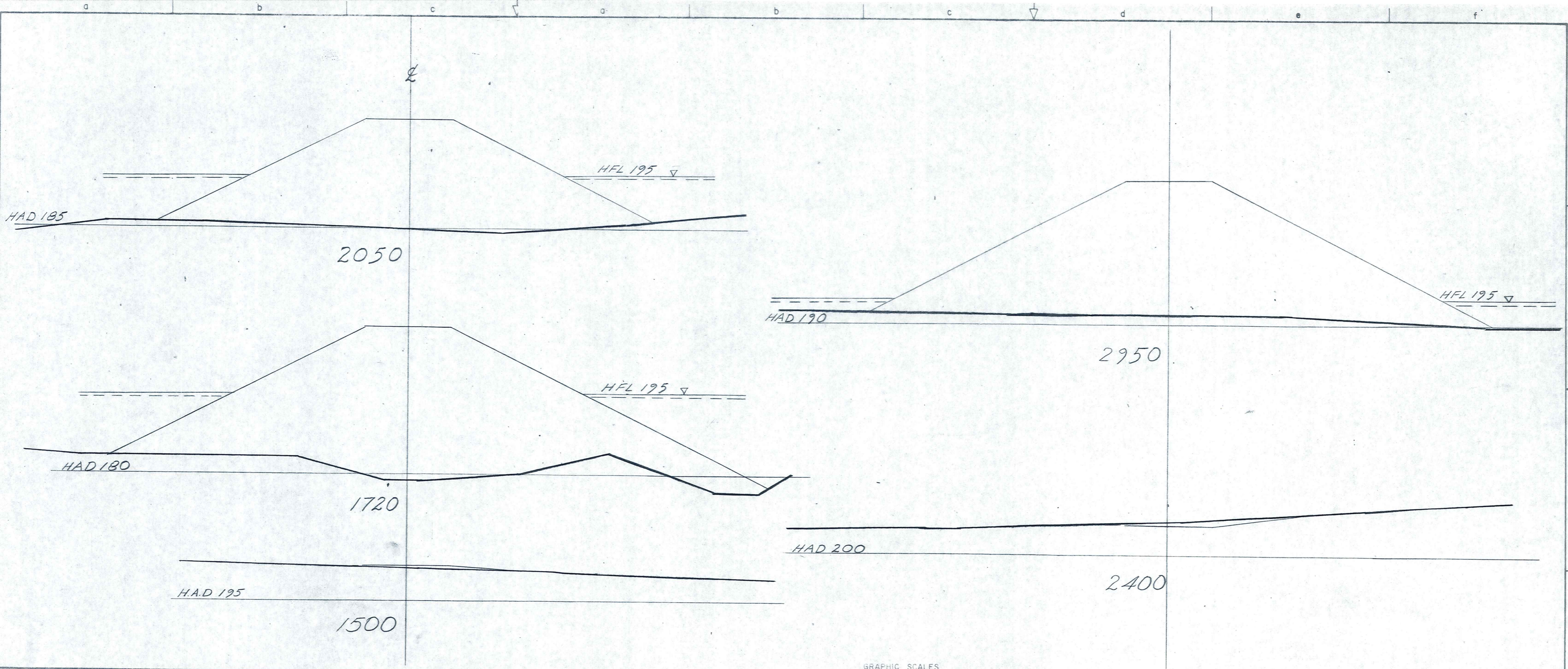
AMENDMENTS	BY	APP'D.	DATE

APPROVED:-
R.D. Grant
Dist Civil Eng

Ministry of Works and Development
N.C.M. LEOD Commissioner

S.H.8. R.D.16 R.S. 295
CROMWELL BRIDGE APPROACHES
LINE 'A' PROFILE

ORIGINAL SCALES AS SHOWN	ISSUE
FILE: 7/75/3/5704	SHEET N°
	IN SHEETS



ADVANCE COPY UNCHECKED

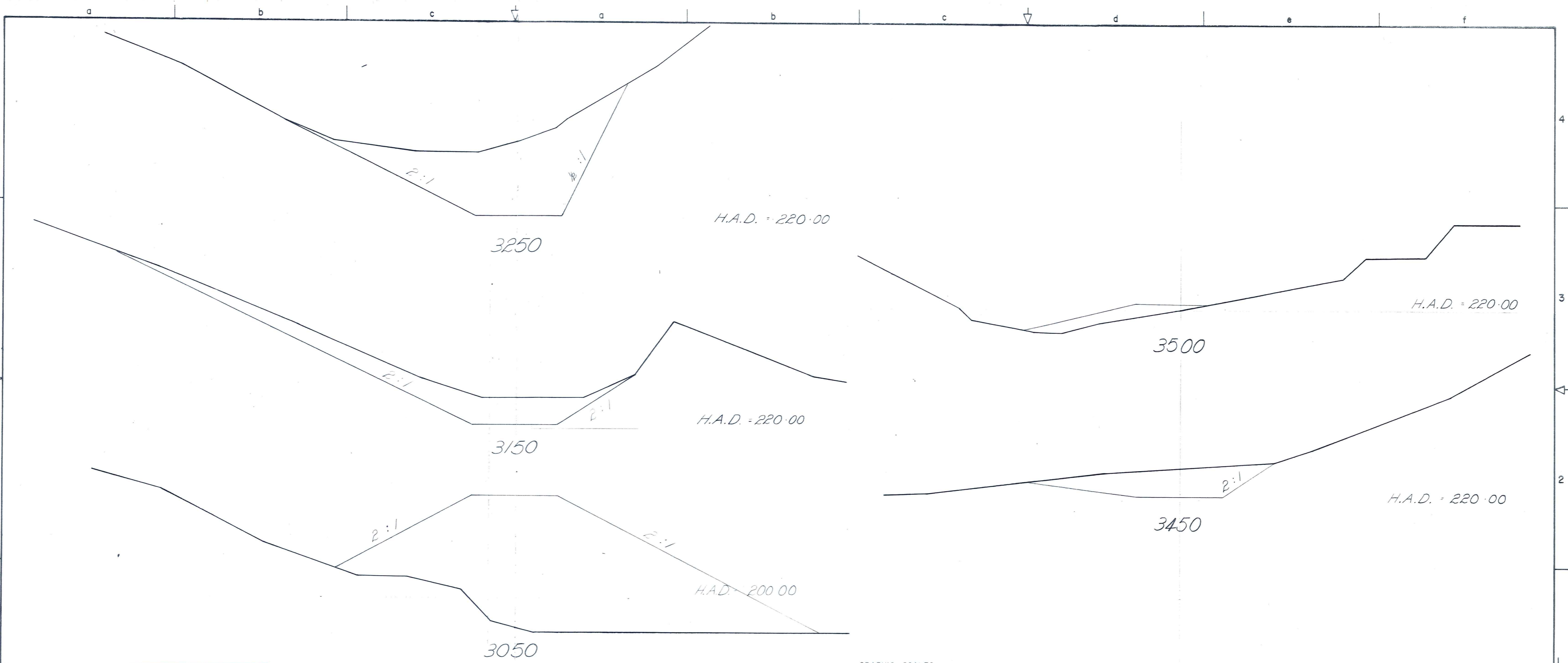
AMENDMENTS		BY	CHECKED	DATE

GRAPHIC SCALES

Ministry of Works and Development
Commissioner

S.H.8. R.D.16 R.S. 295
CROMWELL BRIDGE APPROACHES
CROSS-SECTIONS LINE 'A'

ORIGINAL SCALES	1:500	ISSUE
FILE:		SHEET N°
7/75/3/5704		IN SHEETS



ADVANCE COPY
7
UNCHECKED

AMENDMENTS		BY	APPR.	DATE

GRAPHIC SCALES

APPROVED: -
R.D. Grant
Dist. Civil Eng.

Ministry of Works and Development

N.C.M. LEOD Commissioner

S.H.8. R.D.16 R.S. 295
CROMWELL BRIDGE APPROACHES
LINE 'A' CROSS SECTIONS 3050-3450

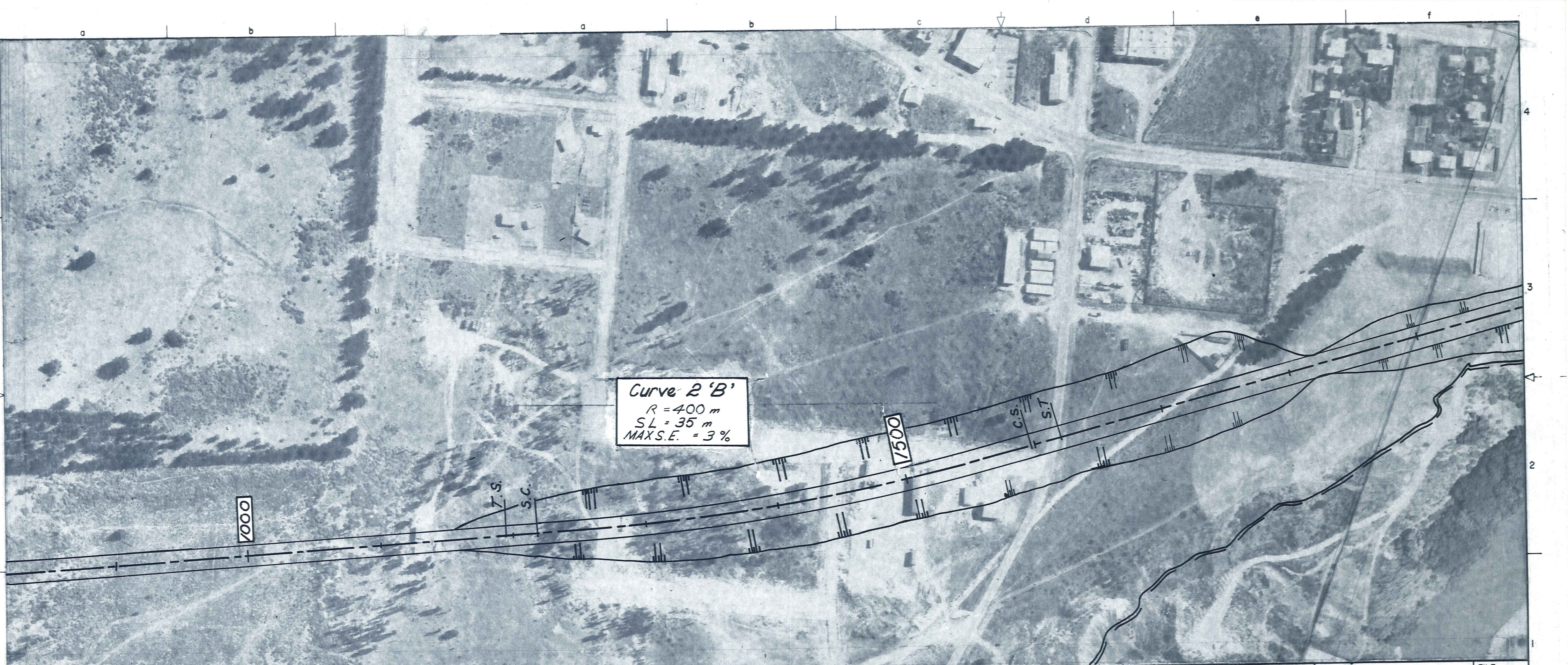
ORIGINAL SCALES 1:500

FILE: 7/75/3/5704

ISSUE

SHEET N^o
IN SHEETS

24



Curve 2 'B'
 $R = 400\text{ m}$
 $SL = 35\text{ m}$
 $MAX\ S.E. = 3\%$

1000

1500

T.S.
S.C.

C.S.
S.T.

ADVANCE COPY

UNCHECKED

8

AMENDMENTS	BY	APPR. DATE	BY	CHECKED	DATE

APPROVED
R.D. Grant
 Dist Civil Eng

Ministry of Works and Development
 N.C. McLEOD
 Commissioner

S.H.8. R.D.16 R.S. 295
 CROMWELL BRIDGE APPROACHES
 LINE 'B' PLAN 1000-1900

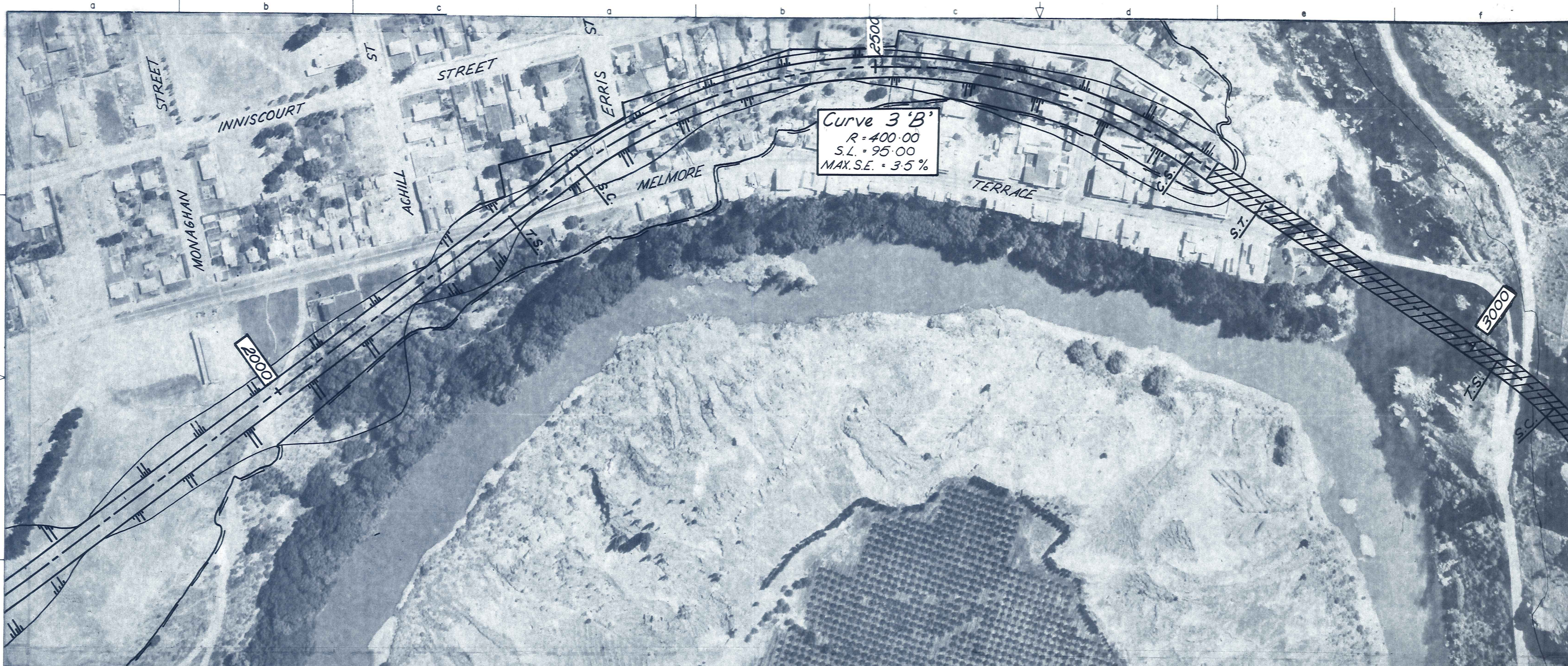
ORIGINAL SCALES	1:2000	FILE
JOB	7/75/3/5704	REVISION
CODE		
SHEET		



B

ORIGINAL SIZE
mm INCHES

0 10 20 30 40 50 60 70 80 90 100 150 200



Curve 3 'B'
 $R = 400.00$
 $S.L. = 95.00$
 $MAX. S.E. = 3.5\%$

ADVANCE COPY
 UNCHECKED

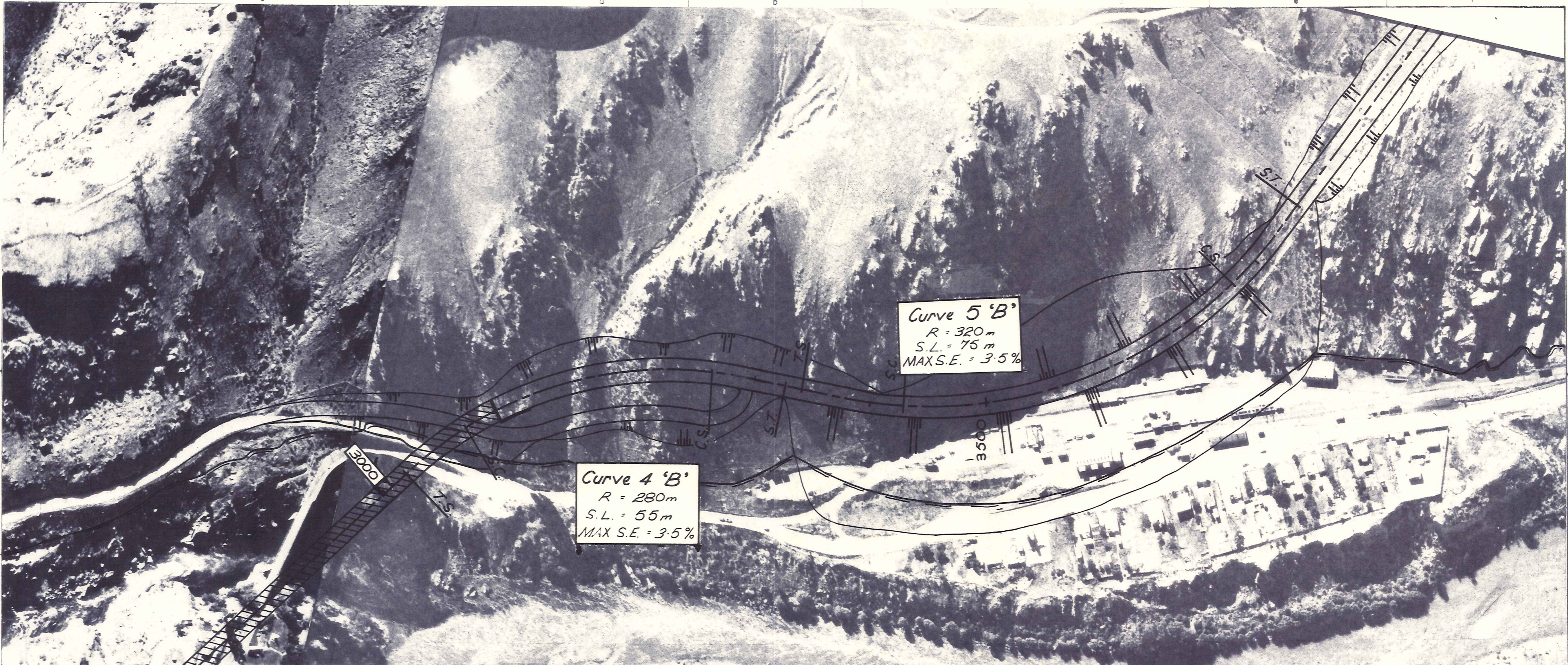
AMENDMENTS		BY	CHECKED	DATE

APPROVED :-
 R.D. Grant
 Dist Civil Eng

Ministry of Works
 and Development
 W.C. McLEOD
 Commissioner

S.H.B. R.D.16 R.S. 295
 CROMWELL BRIDGE APPROACHES
 LINE 'B' PLAN 1800 - 3000

ORIGINAL SCALES	1:2000	ISSUE
FILE		SHEET NO
7/75/3/5704		IN SHEETS



Curve 5 'B'
 R = 320m
 S.L. = 75m
 MAX S.E. = 3.5%

Curve 4 'B'
 R = 280m
 S.L. = 55m
 MAX S.E. = 3.5%

3000

3500

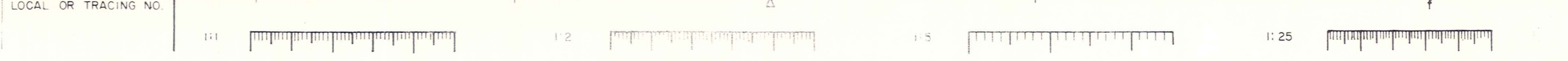
ADVANCE COPY UNCHECKED

AMENDMENTS	BY	APPD.	DATE

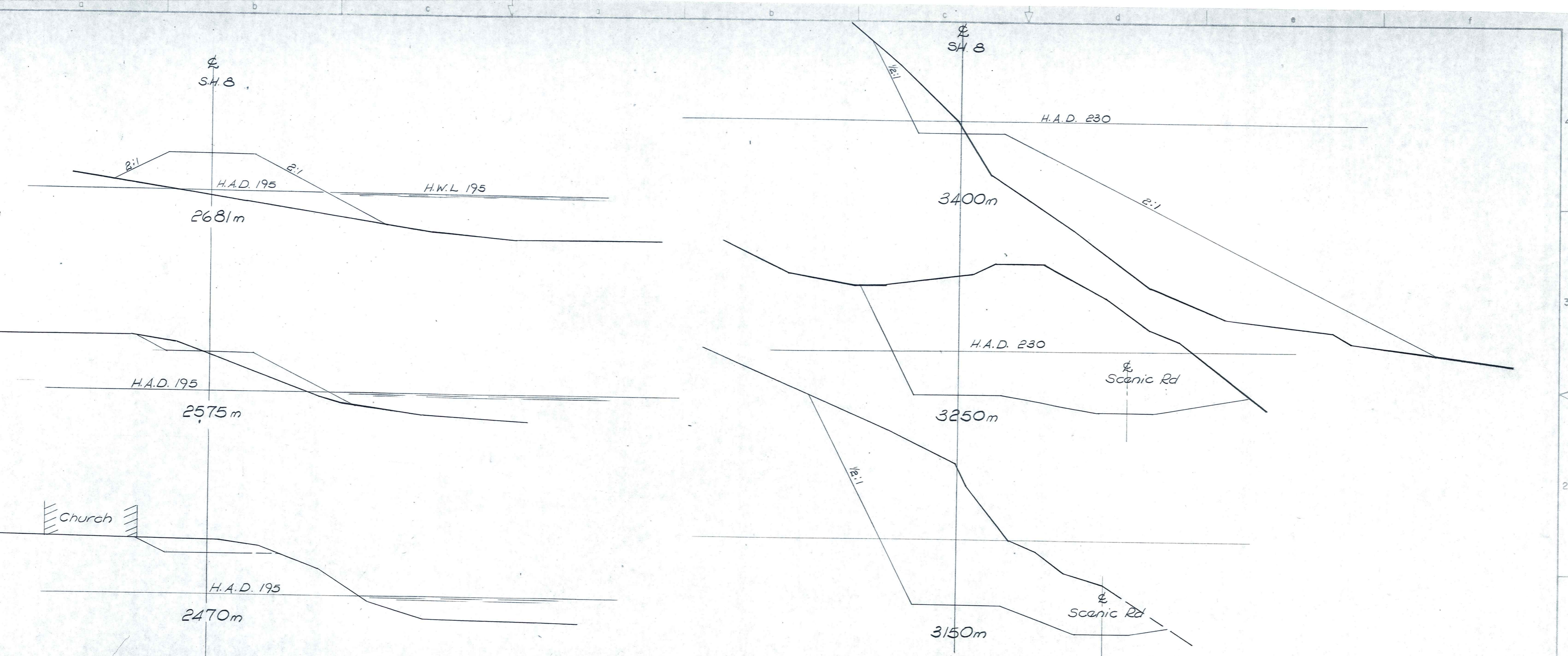
BY CHECKED DATE
 APPROVED
 R. D. Grant
 Dist Civil Eng
 W.C. McLEOD
 Commissioner

S.H.8 R.D.16 R.S. 295
 CROMWELL BRIDGE APPROACHES
 LINE 'B' PLAN 2900~3800

ORIGINAL SCALES	1:2000	FILE
JOB	7/75/3	REVISION
CODE	5704	
SHEET		



ORIGINAL SIZE mm
 10
 484-A 3
 Jan 975



ADVANCE COPY UNCHECKED

AMENDMENTS		BY	APPD.	DATE

GRAPHIC SCALES

APPROVED:-

R.D. Grant,
Dist Civil Eng

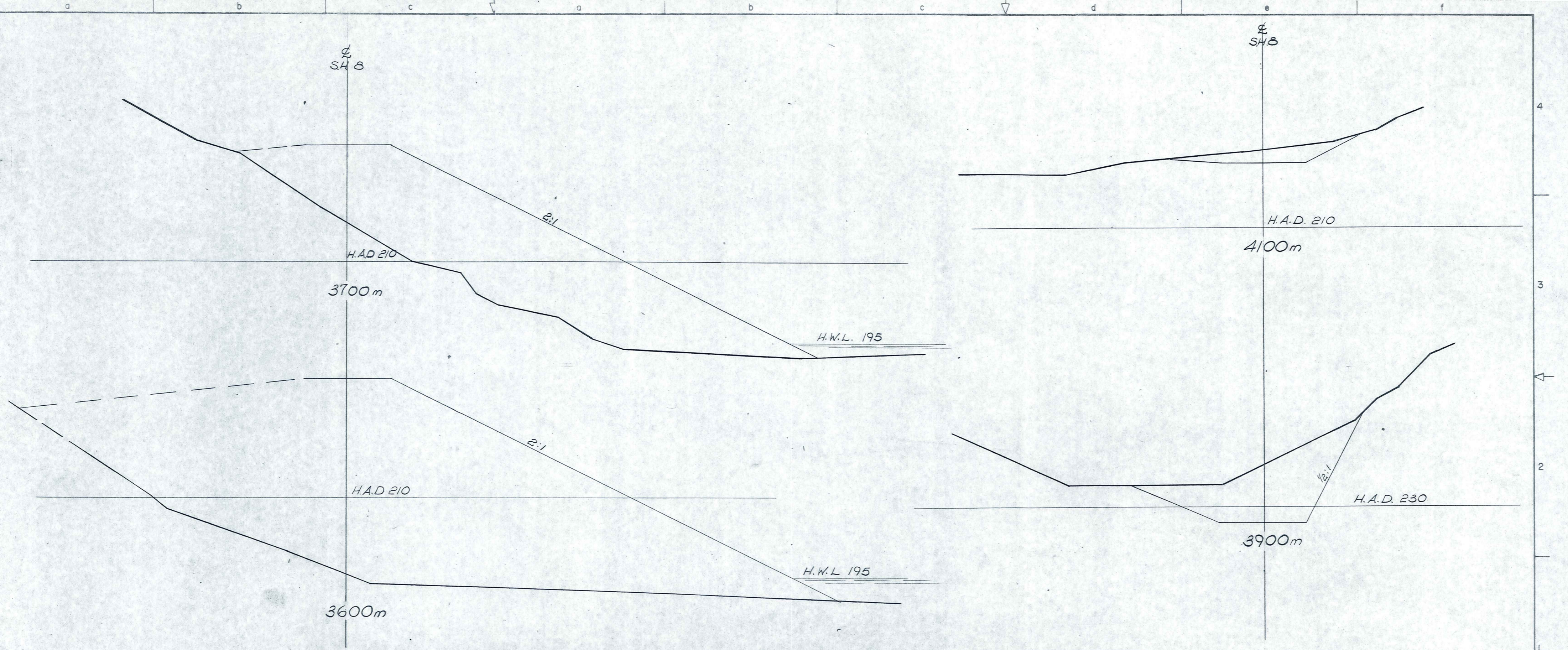
Ministry of Works
and Development

N.C.M. LEOD
Commissioner

S.H. 8. R.D. 16 R.S. 295
CROMWELL BRIDGE APPROACHES
LINE 'B' CROSS - SECT 2470 - 3400

ORIGINAL SCALES	1:500	ISSUE
FILE		SHEET N ^o
		IN SHEETS

7/15/3/5704



GRAPHIC SCALES

ADVANCE COPY UNCHECKED

AMENDMENTS		BY	CHECKED	DATE

APPROVED:
R.D. Grant
Dist. Civil Eng.

Ministry of Works and Development
N.C. McLEOD Commissioner

S.H.B. R.D. 16 R.S. 295
CROMWELL BRIDGE APPROACHES
LINE 'B' CROSS-SECT 3600-4100

ORIGINAL SCALES	1:500	ISSUE
FILE:		SHEET N°
7/75/3/5704		IN SHEETS

13



Curve C 2
 R = 1600
 S.L. = 35.00
 MAX S.E. = 3%

1000

1500

ADVANCE COPY UNCHECKED

1A

AMENDMENTS		BY	CHECKED	DATE

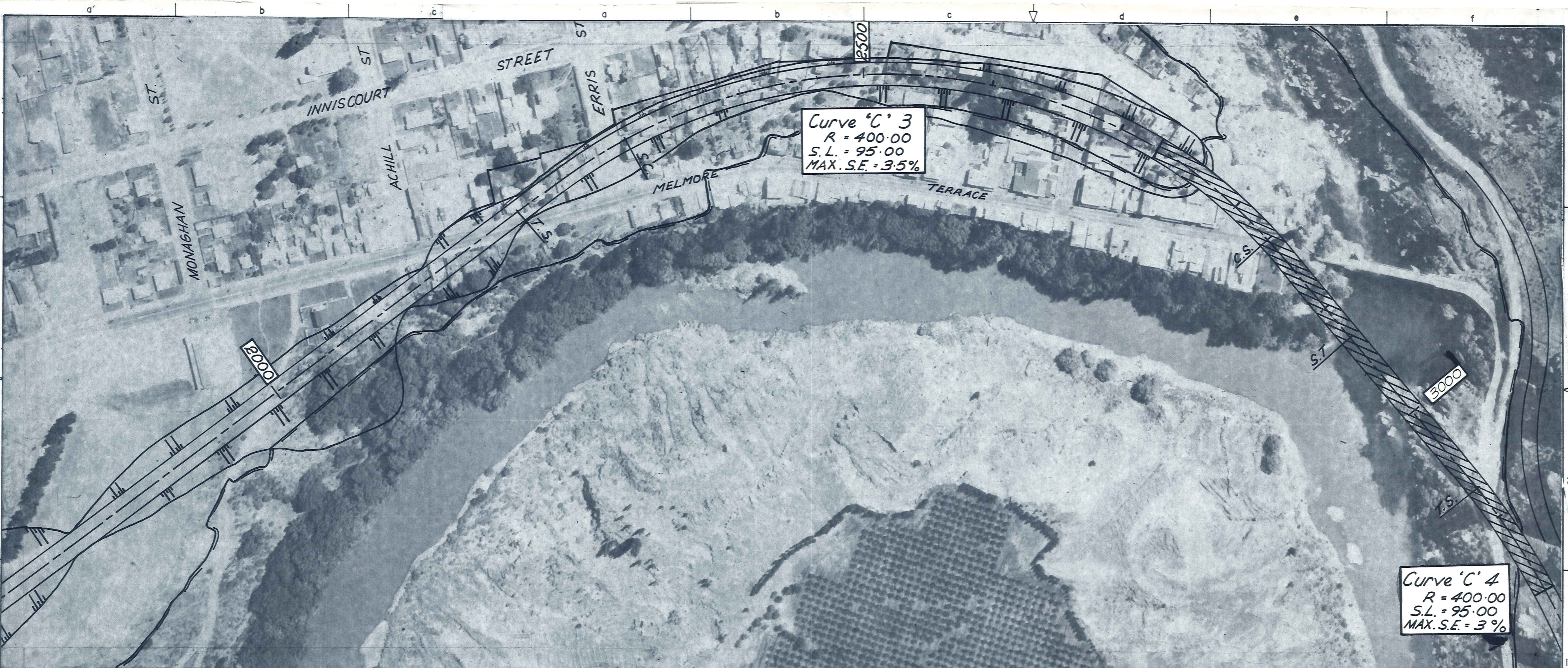
APPROVED:
 R.D. Grant
 Dist Civil Eng

Ministry of Works
 and Development
 N.C. McLEOD
 Commissioner

S.H.8. R.D.16 R.S. 295
 CROMWELL BRIDGE APPROACHES
 LINE 'C' PLAN 1000 - 1900

ORIGINAL SCALE 1:2000 APPROX	ISSUE
FILE:	SHEET N°
7/75/3/5704	IN SHEETS

C



Curve 'C' 3
 R = 400.00
 S.L. = 95.00
 MAX. S.E. = 3.5%

Curve 'C' 4
 R = 400.00
 S.L. = 95.00
 MAX. S.E. = 3%

ADVANCE COPY UNCHECKED

AMENDMENTS	BY	APPD.	DATE

APPROVED :-
 R.D. Grant
 Dist Civil Eng
 Ministry of Works and Development
 W.C.M. LEOD Commissioner

S.H. 8. R.D. 16. R.S. 295.
 CROMWELL BRIDGE APPROACHES
 LINE 'C' PLAN 1800 - 3100

ORIGINAL SCALES 1:2000 APP.	ISSUE
FILE:	SHEET N°
7/75/3/5704	IN SHEETS

15



Curve C 5
 R = 400.00
 S.L. = 95.00
 MAX. S.E. = 3%

SCENIC ROAD

3000

3000

ADVANCE COPY UNCHECKED

AMENDMENTS	BY	APPD.	DATE

BY CHECKED DATE

APPROVED:-
 R.D. Grant
 Dist Civil Eng

Ministry of Works and Development
 N.C. McLEOD, Commissioner

S.H.8. R.D.16 R.S. 295
 CROMWELL BRIDGE APPROACHES
 LINE 'C' PLAN 2900-3700

ORIGINAL SCALES 1:2000 APP.
 FILE: 7/75/3/5704

ISSUE SHEET NO. IN SHEETS



TO S.H. 6

ANTRIM ST

S.H. 8

MEMORIAL HALL

JOINING LINE

ALIGNMENT UP TO THIS LINE
SAME AS CROMWELL DEVELOPMENT
COMMITTEE'S SCHEME 1
SEE 7/75/2/5924/1+2

CURVE CAD 2
R = 1600 m
SL = 35 m
MAX. S.E. = 3%

TOWN CENTRE
TURNOFF

BANNOCKBURN
TURNOFF

1000

1500

ADVANCE COPY UNCHECKED

18

BY	CHECKED	DATE

APPROVED

Ministry of Works
and Development

S.H. 8 RD. 16 R.S. 295

CROMWELL BRIDGE APPROACHES
LINE 'CAD' PLAN 1000-1800

ORIGINAL SCALES 1:2000 APPROX. FILE

JOB	CODE	SHEET	REVISION
7/75/3/5704		17	1

AMENDMENTS	BY	APPD. DATE

LOCAL OR TRACING NO.



CAD



ADVANCE COPY UNCHECKED

AMENDMENTS	BY	APPD.	DATE

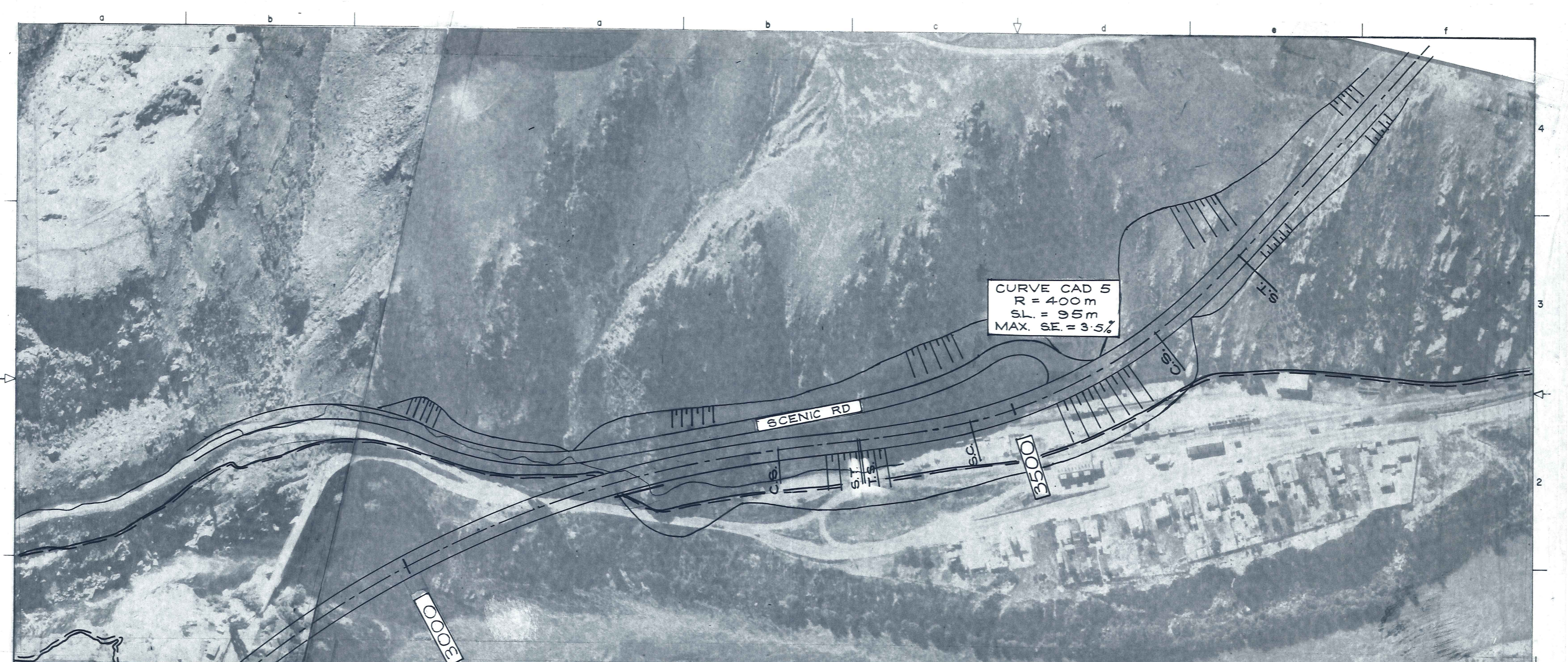
BY	CHECKED	DATE

Ministry of Works and Development
 APPROVED
 R.D. Grant
 Dist. Civil Eng.
 N.C.M. LEOD
 Commissioner

S.H. 8 RD. 16 RS. 295
 CROMWELL BRIDGE APPROACHES
 LINE 'CAD' PLAN 1800-3200

ORIGINAL SCALE	1:2000	FILE
JOB	CODE	SHEET
7/75/3/5704		
REVISION		





20 ADVANCE COPY UNCHECKED

AMENDMENTS	BY	APPD.	DATE

BY	CHECKED	DATE

Ministry of Works and Development
Commissioner

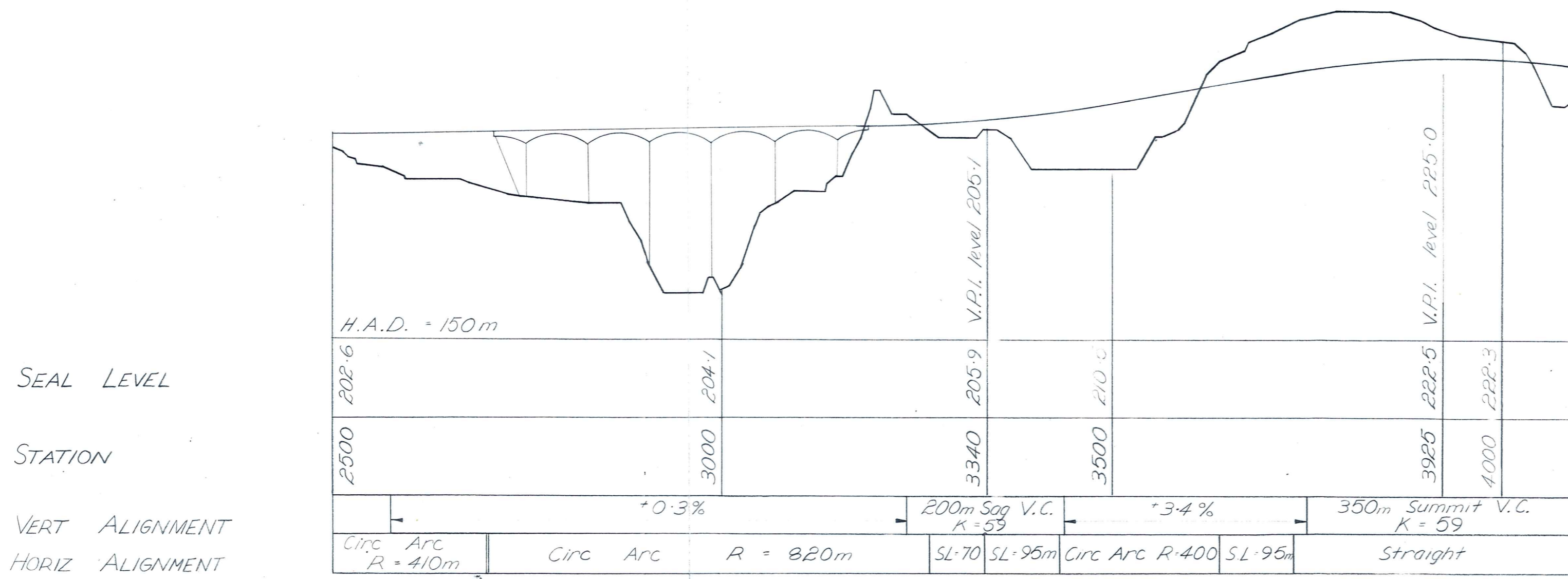
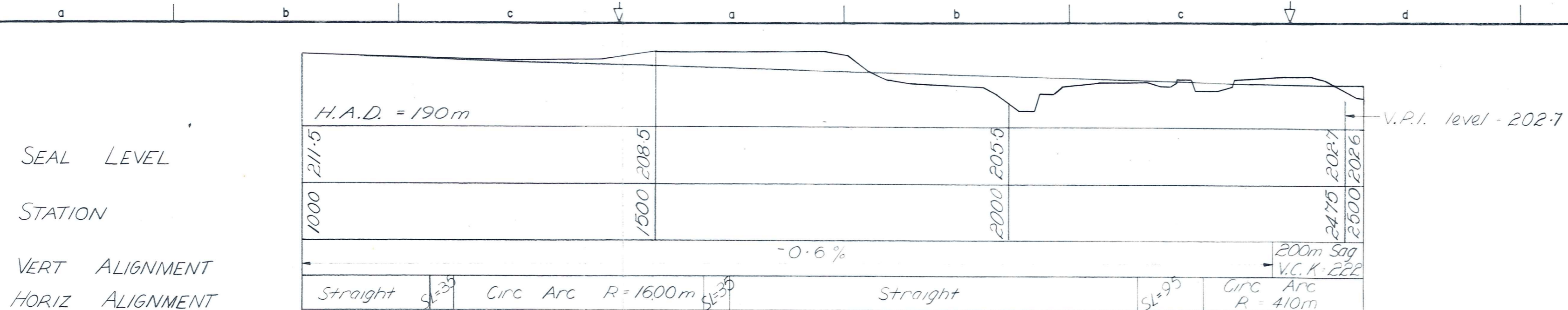
S.H. 8 RD. 16 RS. 295
CROMWELL BRIDGE APPROACHES
LINE 'CAD' PLAN 3200-3900

ORIGINAL SCALES			FILE
JOB	CODE	SHEET	REVISION

LOCAL OR TRACING NO.

LOCAL OR TRACING NO.





Scales: Horiz = 1:5000
Vert = 1:1000

GRAPHIC SCALES

ADVANCE COPY UNCHECKED

BY	CHECKED	DATE

AMENDMENTS	BY	APPD.	DATE

APPROVED:-

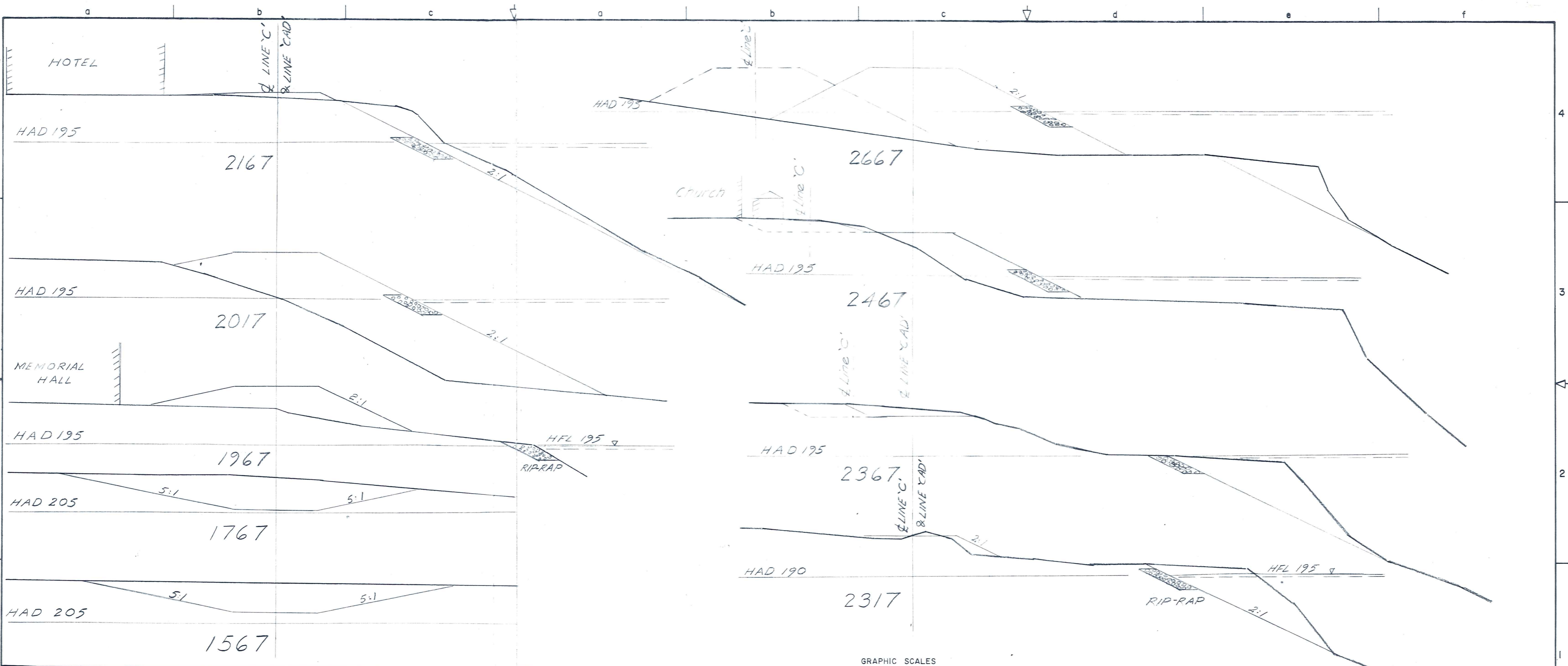
R.D. Grant
Dist Civil Eng

Ministry of Works and Development

N.C. MLEOD, Commissioner

S.H.8 R.D.16 R.S. 295
CROMWELL BRIDGE APPROACHES
LINE 'CAD' PROFILE

ORIGINAL SCALES AS SHOWN	ISSUE
FILE:	SHEET N°
7/75/3/5704	IN SHEETS



GRAPHIC SCALES

22 ADVANCE COPY UNCHECKED

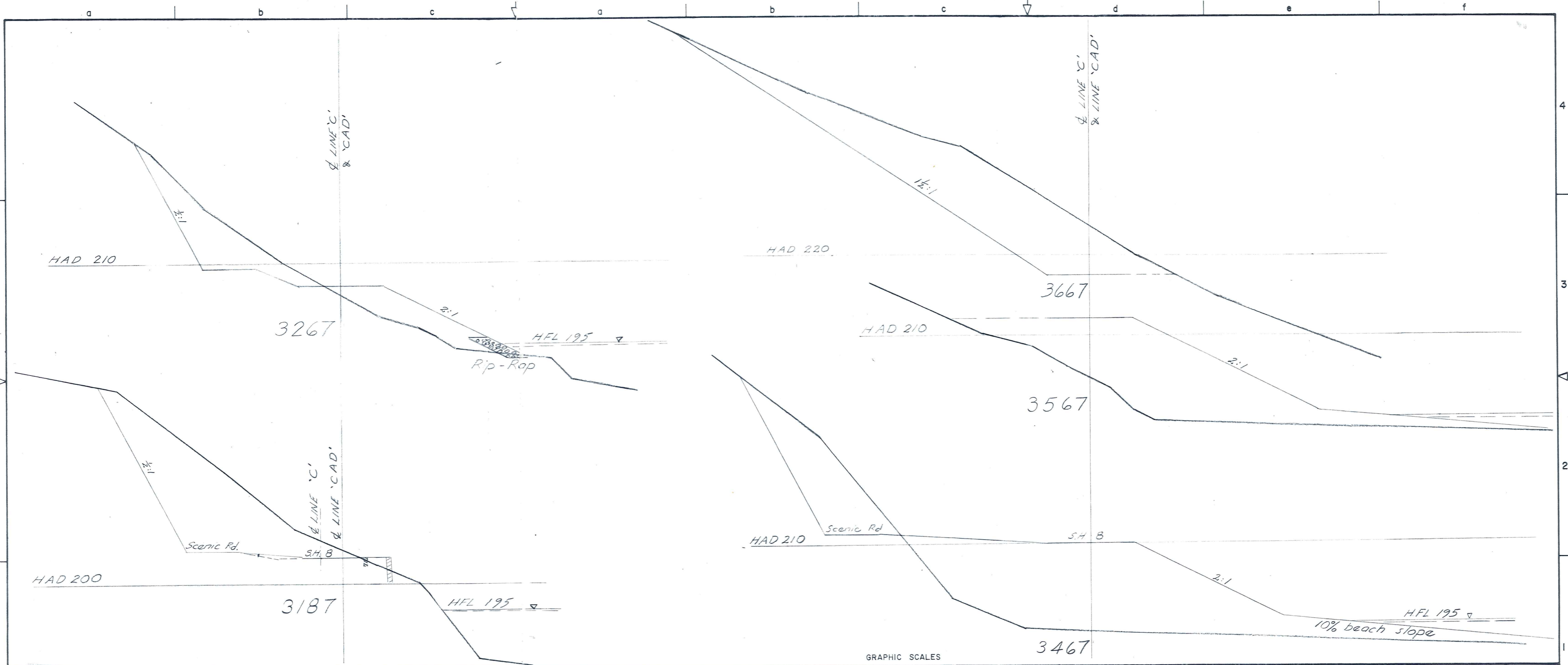
AMENDMENTS	BY	APPD.	DATE

BY CHECKED DATE
 APPROVED:-
 R.D. Grant
 Dist Civil Eng

Ministry of Works and Development
 N.C. M^oLEOD Commissioner

S.H.8 R.D.16 R.S. 295
 CROMWELL BRIDGE APPROACHES
 LINE 'C' AND 'CAD' CROSS SECTIONS

ORIGINAL SCALES 1:500	ISSUE
FILE:	SHEET N ^o
7/75/3/5704	IN SHEETS



ADVANCE COPY UNCHECKED

AMENDMENTS	BY	APPD.	DATE

GRAPHIC SCALES

BY _____ CHECKED _____ DATE _____

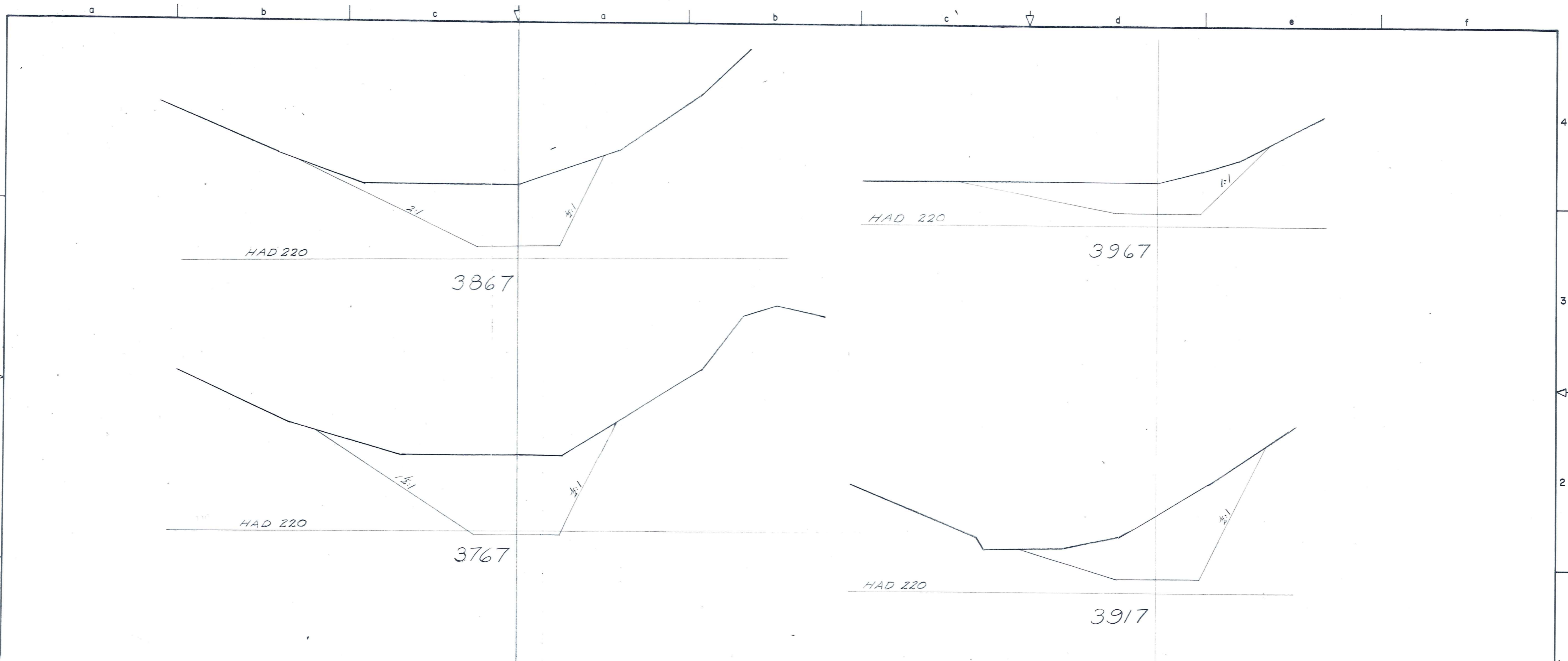
APPROVED :-
R. D. Grant,
Dist Civil Eng

Ministry of Works and Development
Y. C. McLEOD Commissioner

S.H. 8 R.D. 16 R.S. 295
 CROMWELL BRIDGE APPROACHES
 LINE 'C' AND 'CAD' CROSS SECTIONS

ORIGINAL SCALES 1:500	ISSUE
FILE: _____	SHEET N°
7/75/3/5704	IN SHEETS

23



2A ADVANCE COPY UNCHECKED

AMENDMENTS		BY	CHECKED	DATE

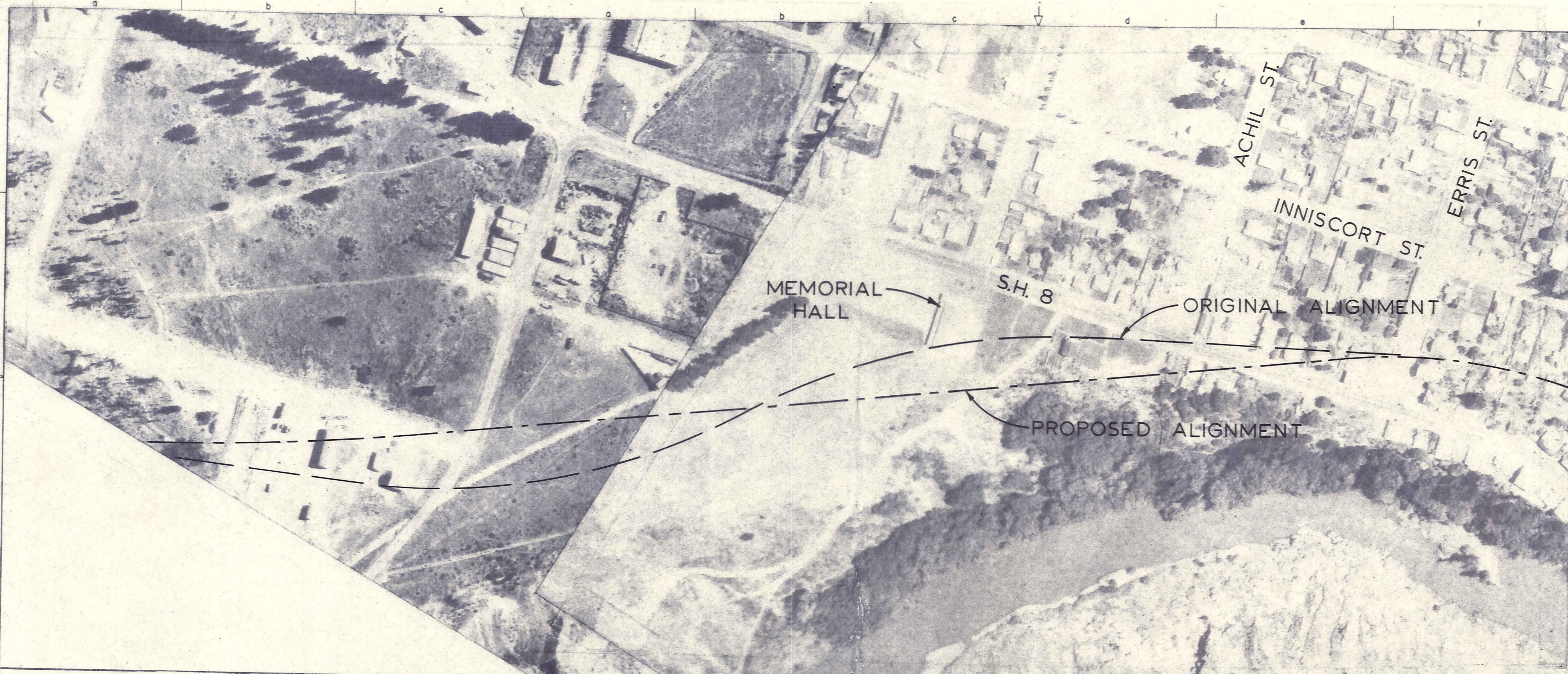
GRAPHIC SCALES

APPROVED:-
R. D. Grant
Dist Civil Eng

Ministry of Works and Development
N.C. McLEOD
Commissioner

S.H.B. R.D. 16 R.S. 295
CROMWELL BRIDGE APPROACHES
LINE 'C' AND 'CAD' CROSS SECTIONS

ORIGINAL SCALES	1:500	ISSUE
FILE:		SHEET N°
		IN SHEETS
	7/75/3/5704	



ADVANCE COPY UNCHECKED

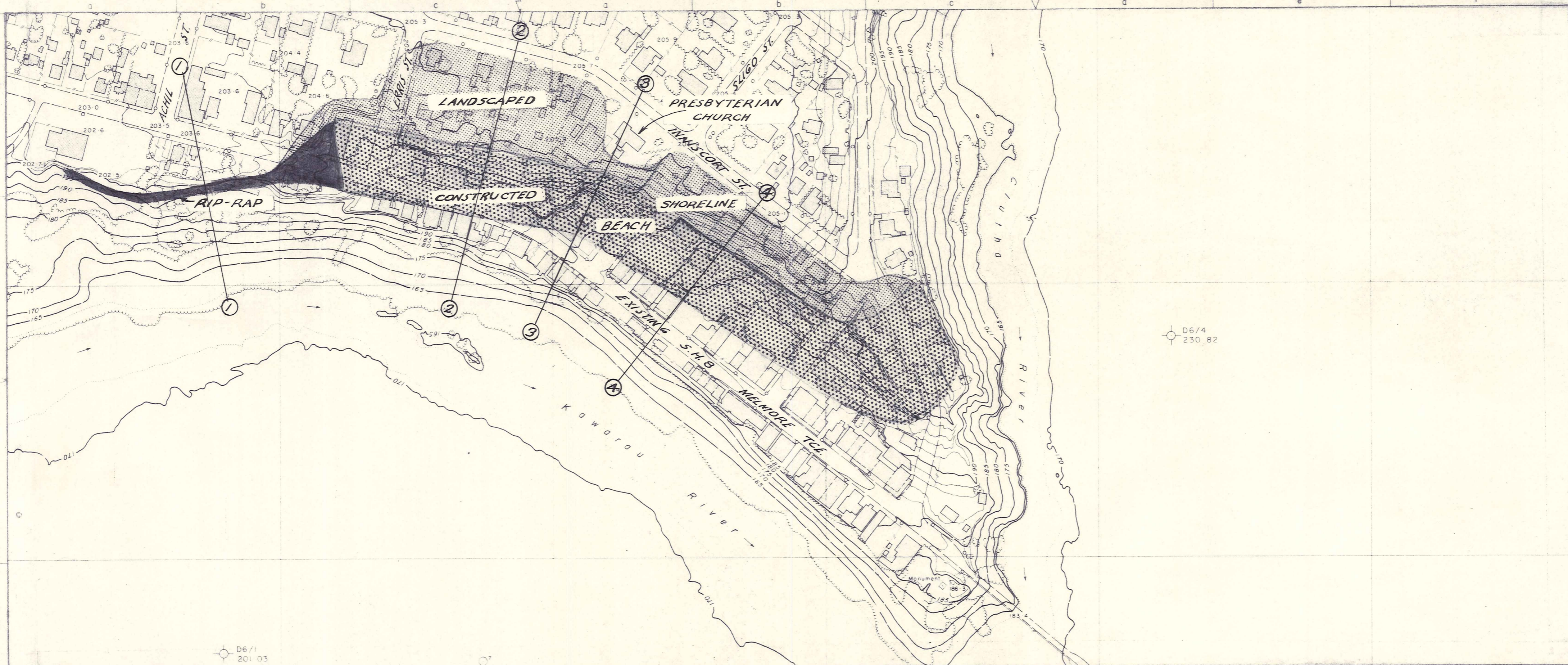
AMENDMENTS	BY	APPD.	DATE

APPROVED:-
A.D. Grant
Dist Civil Eng

Ministry of Works and Development
N.C. McLEOD Commissioner

S.H.8. R.D.16 R.S.295
 CROMWELL BRIDGE APPROACHES
 ALTERNATIVE ALIGNMENT MEMORIAL HALL

ORIGINAL SCALES 1:2000	ISSUE
FILE: [] []	SHEET N°
	IN SHEETS



D6/1
201 03

D6/4
230 82

ADVANCE COPY UNCHECKED

AMENDMENTS	BY	APPD.	DATE	BY	CHECKED	DATE

APPROVED:-

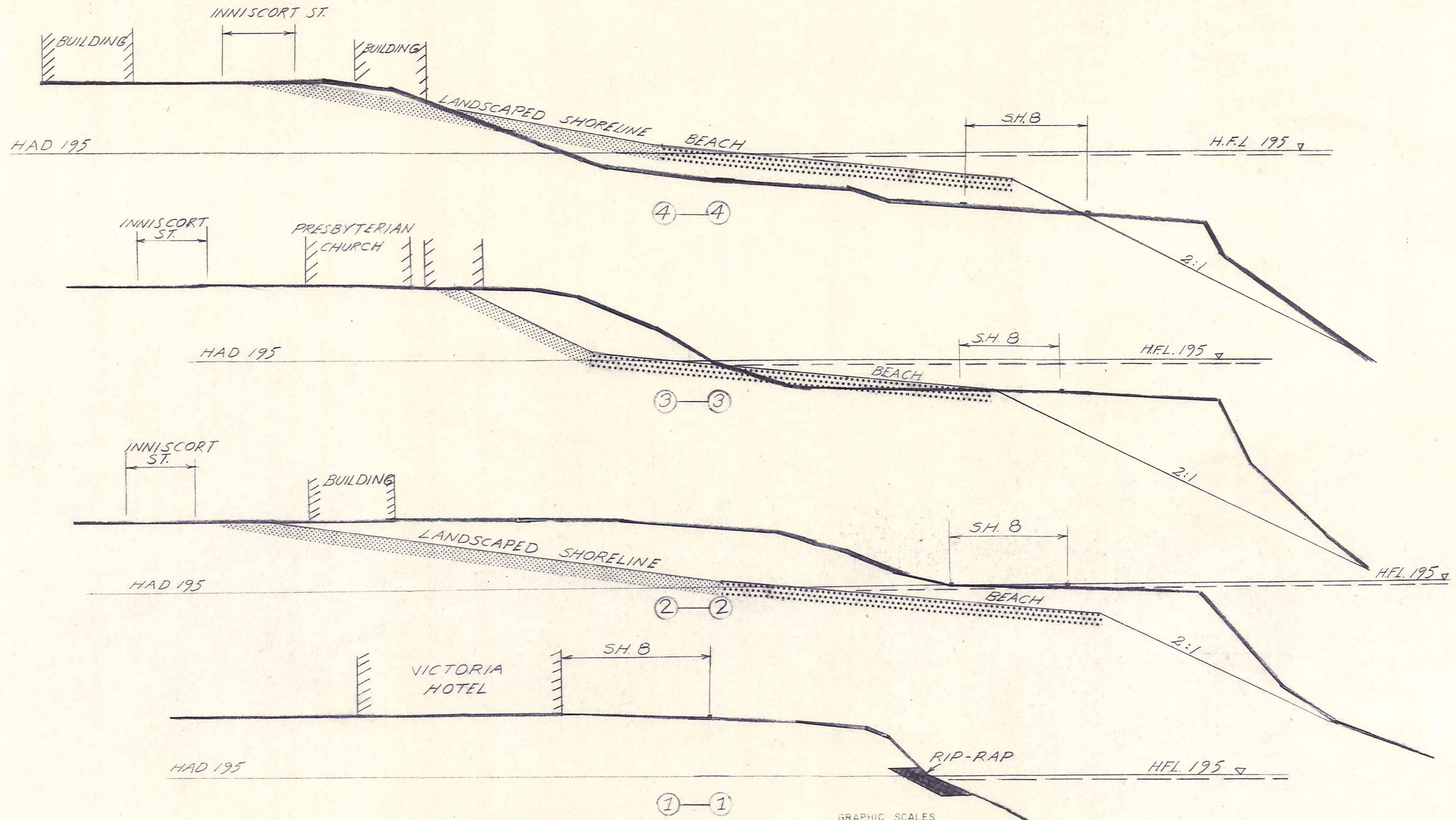
R.D. Grant
Dist Civil Eng

Ministry of Works
and Development

N.C. M'LEOD
Commissioner

S.H.B. R.D.16 R.S. 295
CROMWELL BRIDGE APPROACHES
POSSIBLE LAKESHORE TREATMENT.

ORIGINAL SCALE	1:2000	ISSUE
FILE:		SHEET N ^o
		IN SHEETS



2467
2767
2167

ADVANCE COPY UNCHECKED

AMENDMENTS	BY	APP'D	DATE

GRAPHIC SCALES

APPROVED:-
R.D. Grant
Dist Civil Eng

Ministry of Works and Development
N.C. McLEOD, Commissioner

S.H.8. R.D.16 R.S.295
CROMWELL BRIDGE APPROACHES
POSSIBLE LAKESHORE TREATMENT

ORIGINAL SCALES 1:50
FILE: