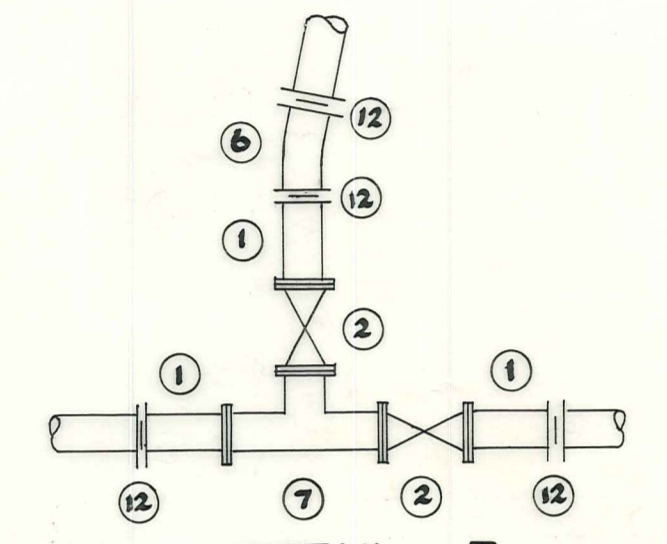
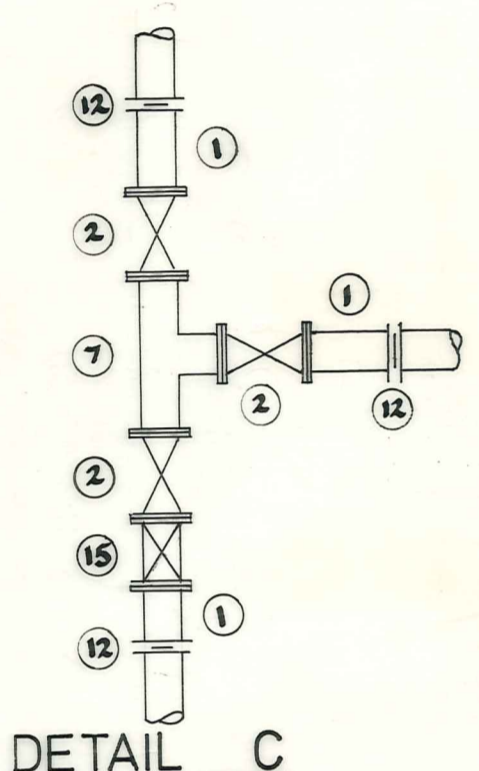


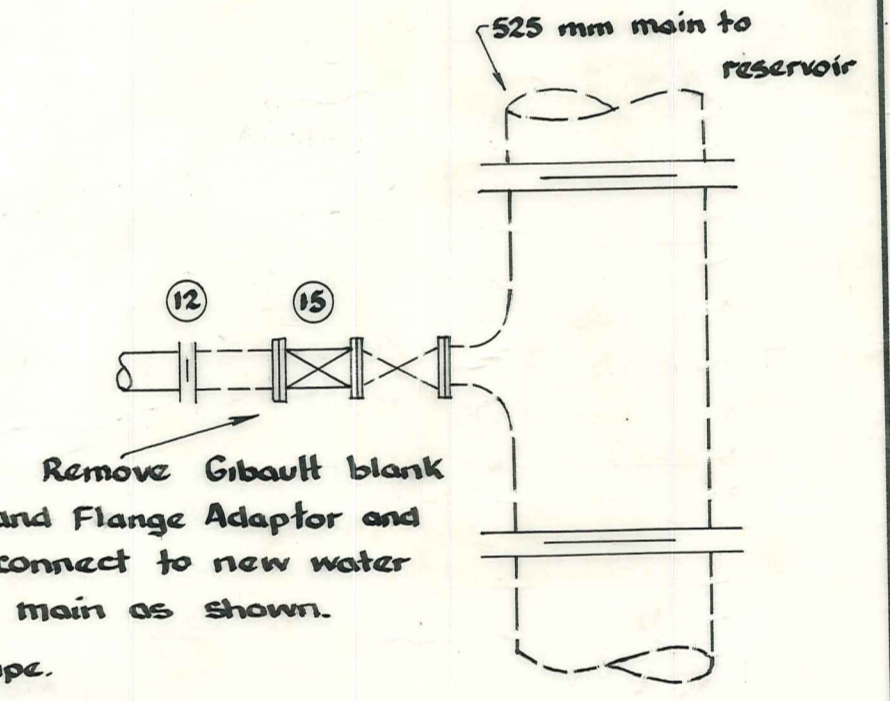
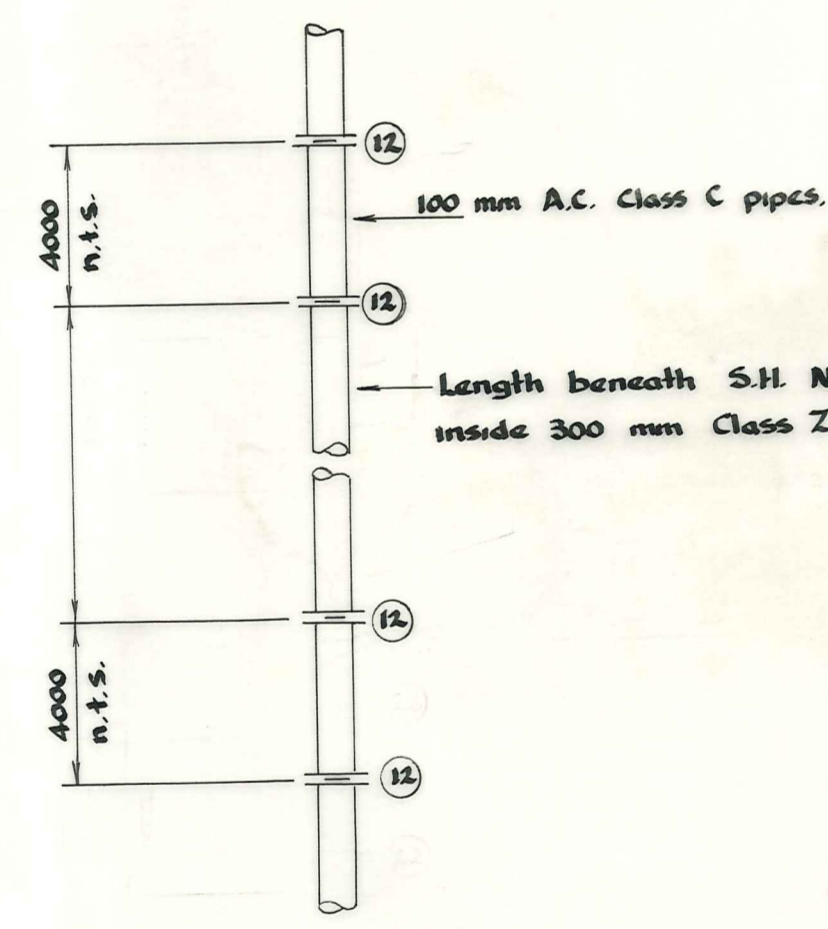
DETAIL B

DETAIL A



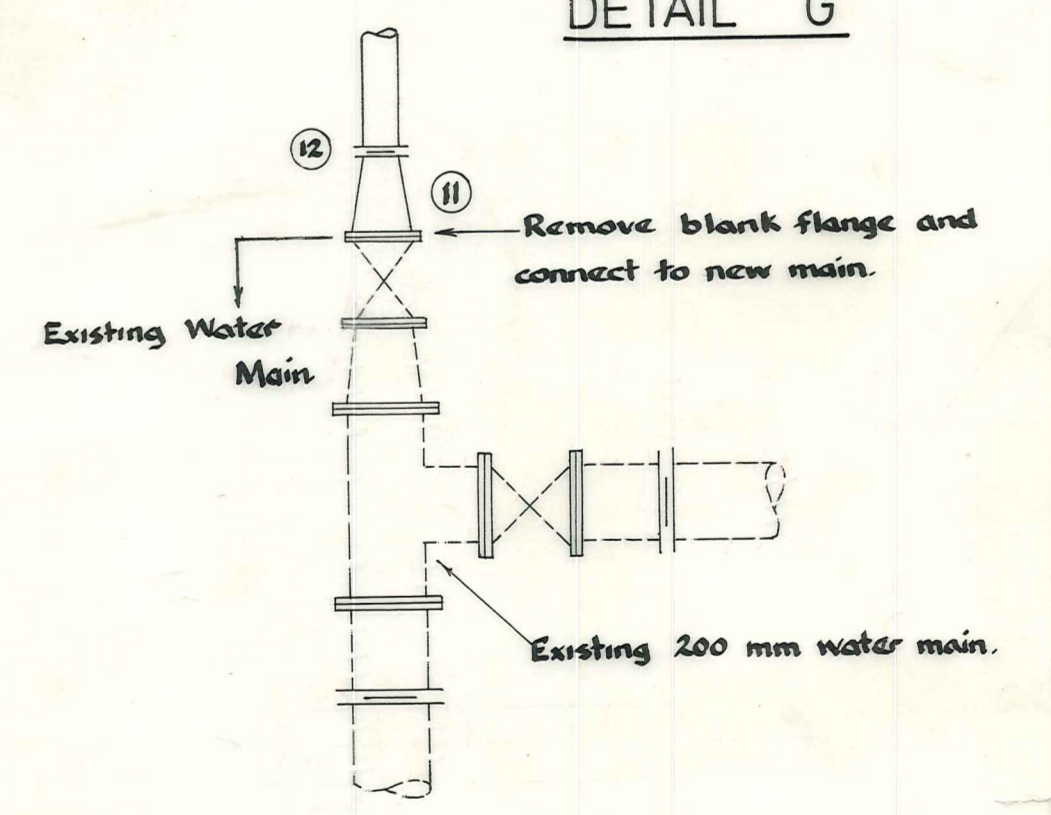
DETAIL C

DETAIL E



DETAIL D

DETAIL G



DETAIL F

Item	Description
1	100 mm flanged adaptor.
2	100 mm flanged sluice valve
6	100 mm x 1 1/4" plain bend.
7	100 mm flanged tee
11	150 to 100 mm reducer, 150 end flanged.
12	100 mm gibault joint.
15	100 mm Kent Helix 2000 Water Meter
3	100 mm x 90° plain bend

Scales
Layout Plan 1:2000
Details 1:20

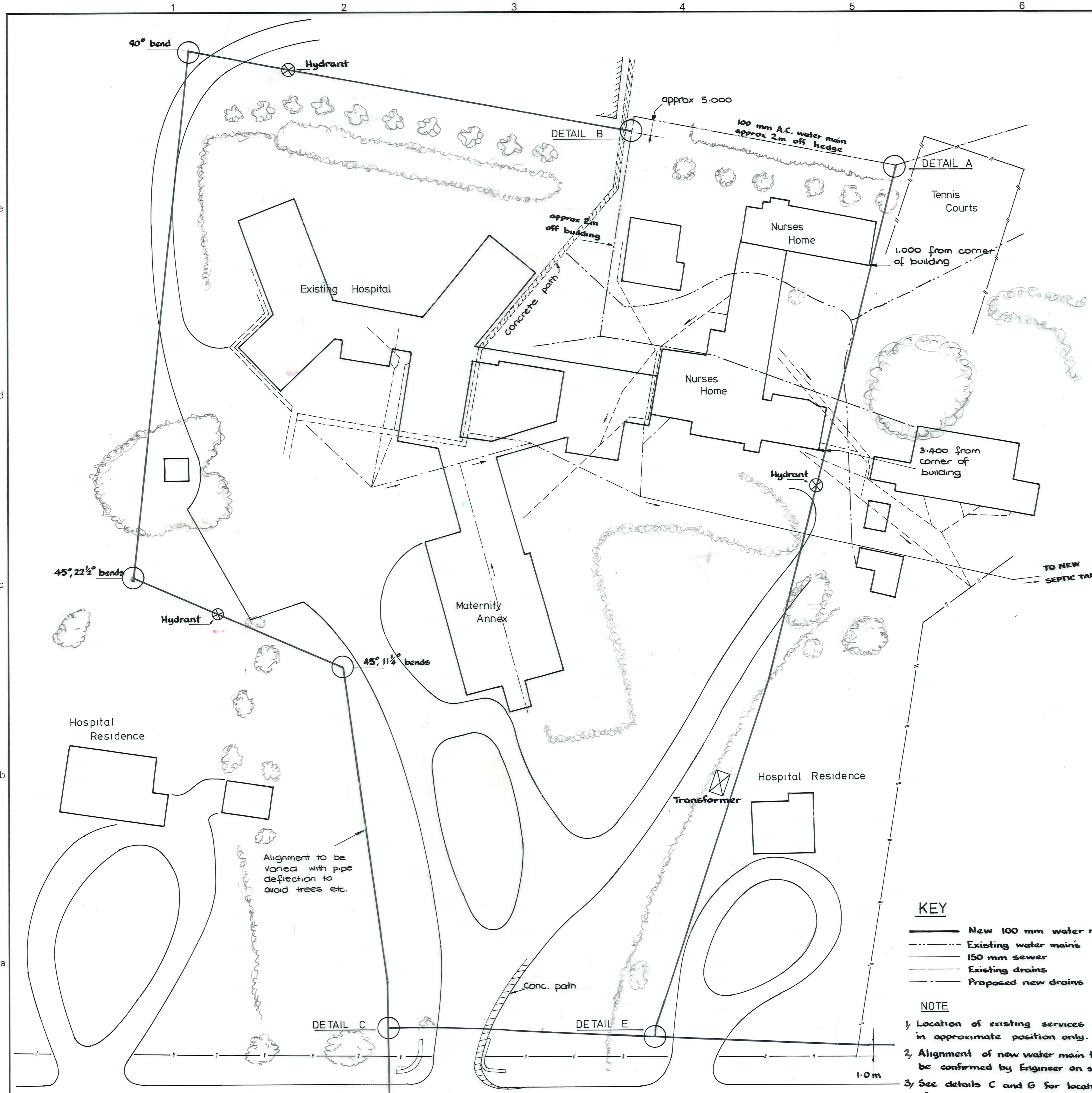
ORIGINAL SIZE
mm INCHES

DUFFILL WATTS & KING
CONSULTING CIVIL & STRUCTURAL ENGINEERS
Dunedin P.O. Box 5269, Ph. 77-240 Invercargill P.O. Box 576, Ph. 3049
Balclutha P.O. Box 220, Phone 1425

VINCENT
HOSPITAL BOARD

CROMWELL HOSPITAL WATER SUPPLY

AMENDMENTS				NAME	DATE	JOB NO.	Sheet No.
NO.	BY	DATE	Appvd.	Drawn	A.C. DER	8918	1
				Calculations	B. Knox		of shfts
				Traced			
				Checked			
				Approved			



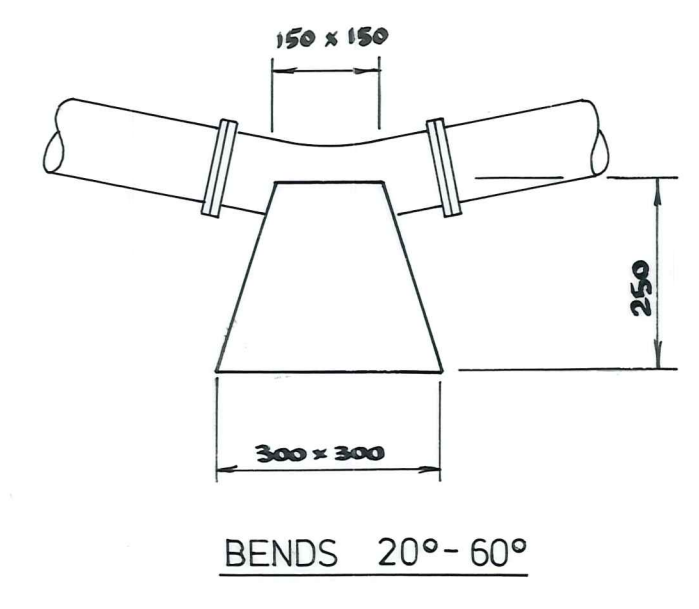
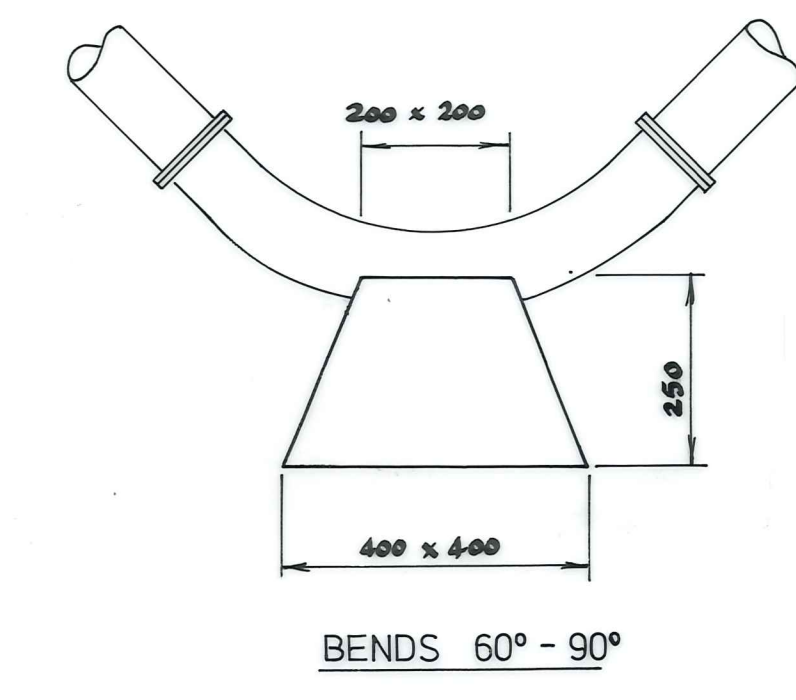
PLAN OF HOSPITAL GROUNDS (NOT TO SCALE)

KEY

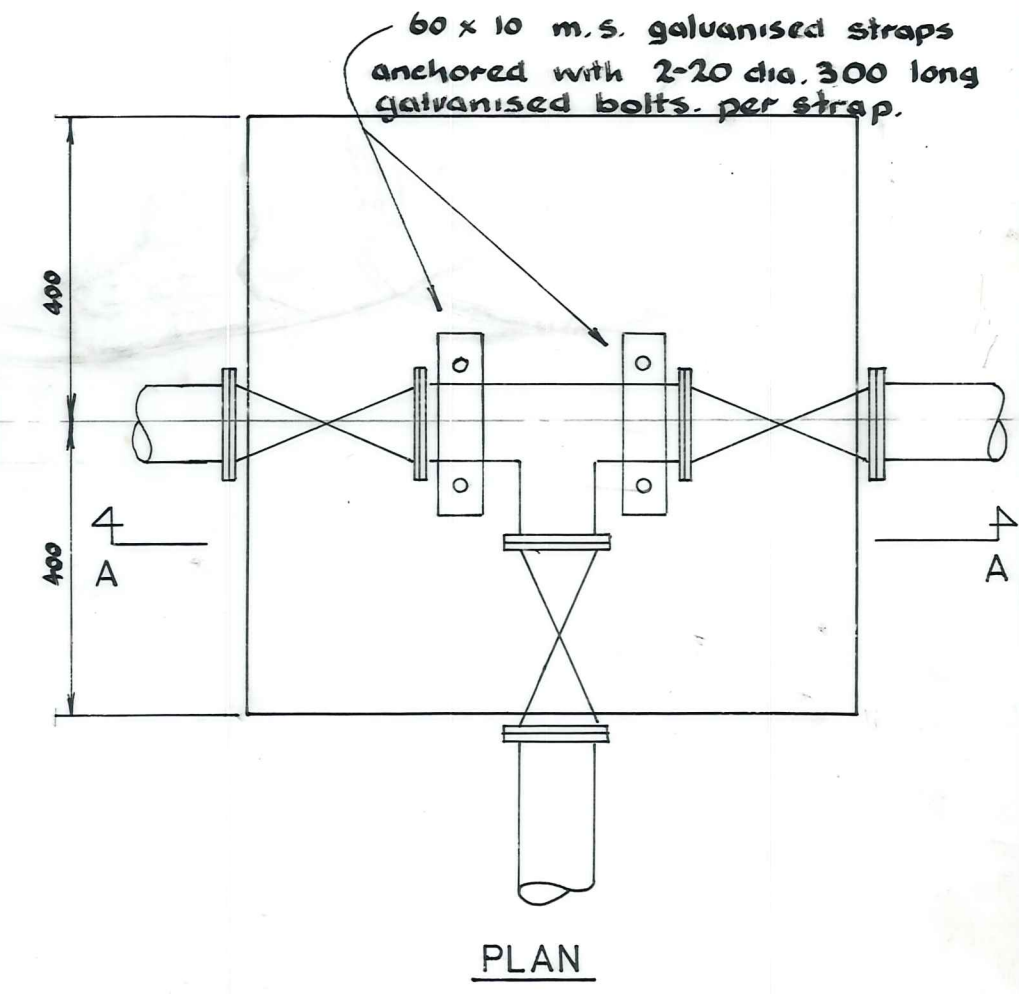
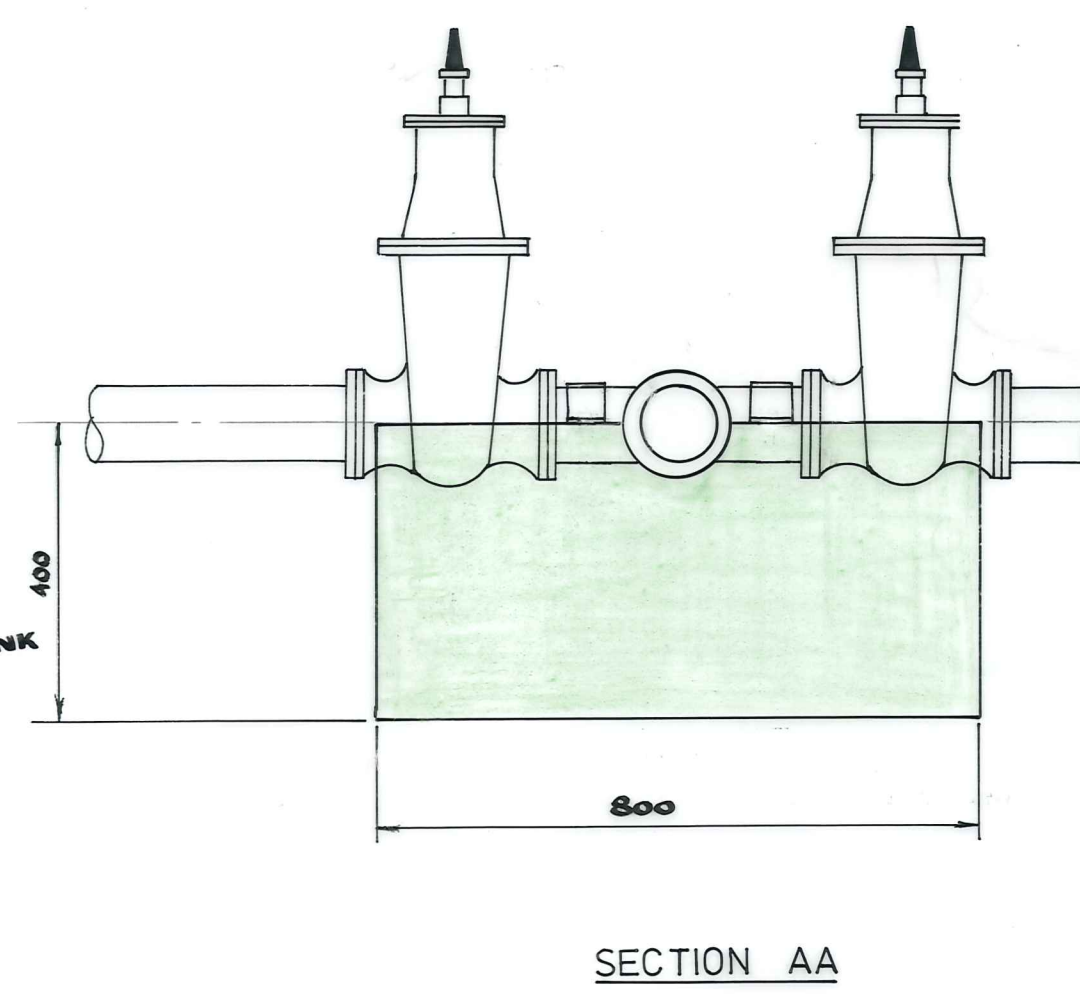
- New 100 mm water main
- - - Existing water mains
- 150 mm sewer
- - - Existing drains
- - - Proposed new drains

NOTE

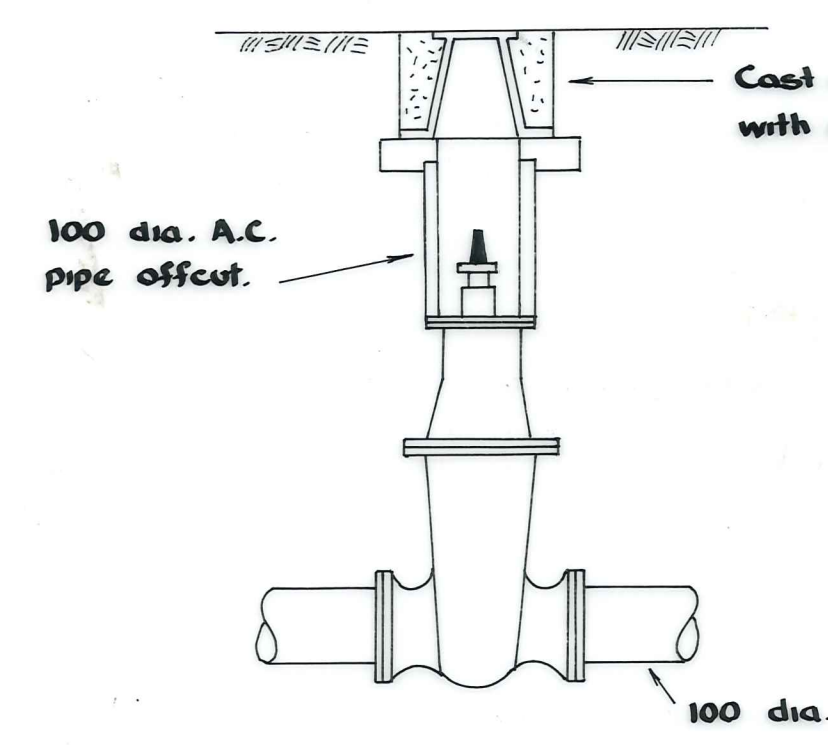
1. Location of existing services shown in approximate position only.
2. Alignment of new water main to be confirmed by Engineer on site.
3. See details C and G for location of water meters.



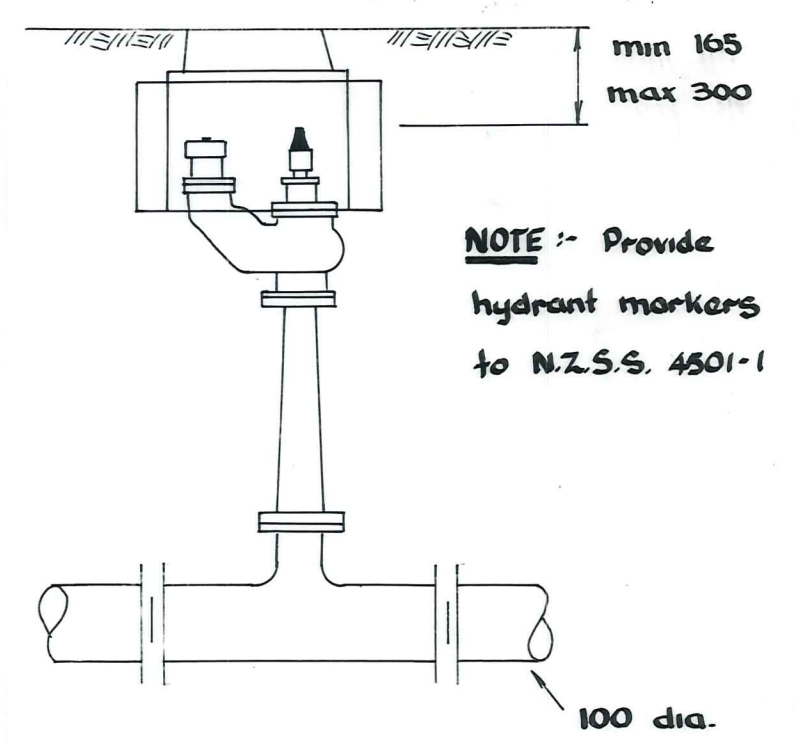
ANCHOR BLOCKS
Scale 1:10



ANCHOR BLOCKS TO DETAILS B,C,E.
Scale 1:10



SLUICE VALVE
Scale 1:10



HYDRANT
Scale 1:10

NOTE - Provide hydrant markers to N.Z.S.S. 4501-1

ORIGINAL SIZE INCHES
0 10 20 30 40 50 60 70 80 90 100 110 120 200 300

DUFFILL WATTS & KING LTD
CONSULTING CIVIL & STRUCTURAL ENGINEERS
Dunedin P.O. Box 5289 Ph. 77-133 Invercargill P.O. Box 576 Ph. 83049
Balclutha P.O. Box 220 Phone 1425

VINCENT HOSPITAL BOARD

CROMWELL HOSPITAL WATER SUPPLY

AMENDMENTS			NAME DATE		JOB NO.	Sheet No.		
NO.	BY	DATE	Appvd.	Surveyed	8918	2		
				Drawn				
				Calculations			D. Railton 8/78	
				Traced			B. Knox 8/78	of shts
				Checked				
				Approved				

File 157/1 L.B. F.B. ~