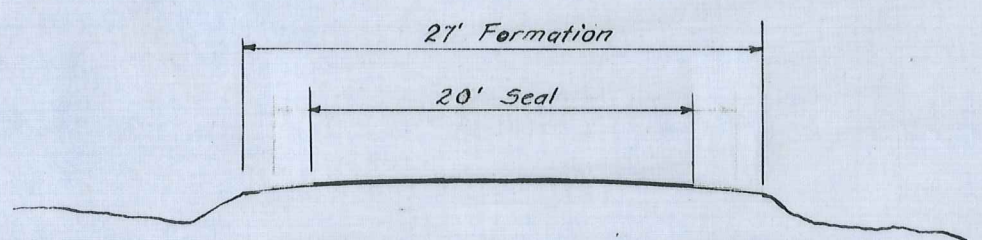


PLAN

Scale: 1 ch. to 1 in.



TYPICAL SECTION.

Scale: 10 ft. to 1 in.

MANIOTOTO COUNTY	ST. BATHANS LOOP MAIN HIGHWAY - CONSTRUCTION B5	SCALE: 1 ch. & 10 ft.
R. J. Black County Engineer	DONALD STUARTS BRIDGE APPROACH SEAL	FILE: 6/2
23:2:56. P. Bramley.		FOLDER: N ^o . 3.
CONTRACT NO.	4 CHAINS AT 20 FT. WIDTH.	M.C.C. 320

ABUTMENT		STEEL					
ROD	DESCRIPTION	DIA.	No. of	LENGTH			
A1		5/8"	50	29'-0"			
A2	 9'-5" 12'-2" 11'-2" 1'-9"/>	5/8"	56	24'-0"			
A3		X 7'-1"	5/8"	56	8'-0"		
A4		10'-0 1/2"	5/8"	40	10'-6"		
A5	As above	9'-6"	5/8"	4	10'-0"		
A6	"	7'-10"	5/8"	4	8'-3"		
A7	"	5'-10"	5/8"	4	6'-3"		
A8		Z 4'-6"	Y 4'-3"	8'-9"	5/8"	40	13'-6"
A9	As above	4'-3"	2'-2"	8'-3"	5/8"	4	10'-10"
A10	"	3'-3 1/2"	2'-2"	6'-5"	5/8"	4	9'-0"
A11	"	2'-3"	2'-2"	4'-4"	5/8"	4	7'-0"
A12	"	1'-6"	2'-2"	2'-11"	5/8"	4	5'-6"
A13		7'-11"	9"	5/8"	4	17'-6"	
A14	As above	8'-5"	9"	5/8"	4	18'-6"	
A15	"	8'-11"	9"	5/8"	4	19'-6"	
A16	"	9'-5"	9"	5/8"	4	20'-6"	
A17	"	9'-11"	9"	5/8"	4	21'-6"	
A18	"	10'-5"	9"	5/8"	4	22'-6"	

ABUTMENT		STEEL			cont'd.	
ROD	DESCRIPTION	Y	X	DIA.	No. of	LENGTH
A19	As above	10'-11"	9"	5/8"	4	23'-6"
A20	"	11'-2"	1'-0"	5/8"	4	24'-3"
A21	"	11'-2"	1'-6"	5/8"	4	24'-9"
A22	"	11'-2"	1'-9"	5/8"	8	24'-0"
A23				1/2"	8	7'-5"
A24	See drawing Sheet 1			No.6g	250	4'-0"
A25	 11'-4" 4'-7"/>			5/8"	8	26'-6"
A26		X 21'-10"		5/8"	8	22'-9"
A27		11'-9"		5/8"	8	12'-3"
A28		2'-9"		1/2"	34	7'-6"
A29	As above	1'-9"		1/2"	32	5'-6"

DECK		STEEL		
ROD	DESCRIPTION	DIA.	No. of	LENGTH
D1		5/8"	26	28'-0"
D2		5/8"	26	27'-0"
D3	 3'-1 1/8" 3/8" 2'-10 1/2" 3/8" 2'-2 3/4" 3/8" 2'-10 1/2" 3/8" 1'-1 1/8" 4 1/2" 0 + 0"/>	5/8"	25	29'-0"
D4		5/8"	36	30'-6"

NOTES:

1. Sketches are not to scale.
2. Dimensions are to outside of rods unless shown otherwise.
3. Rods D1, D2, & D3 sloped from centre to suit deck slab

MANIOTOTO COUNTY
 24/4/53 R.J. Black County Engineer
 CONTRACT No. 376

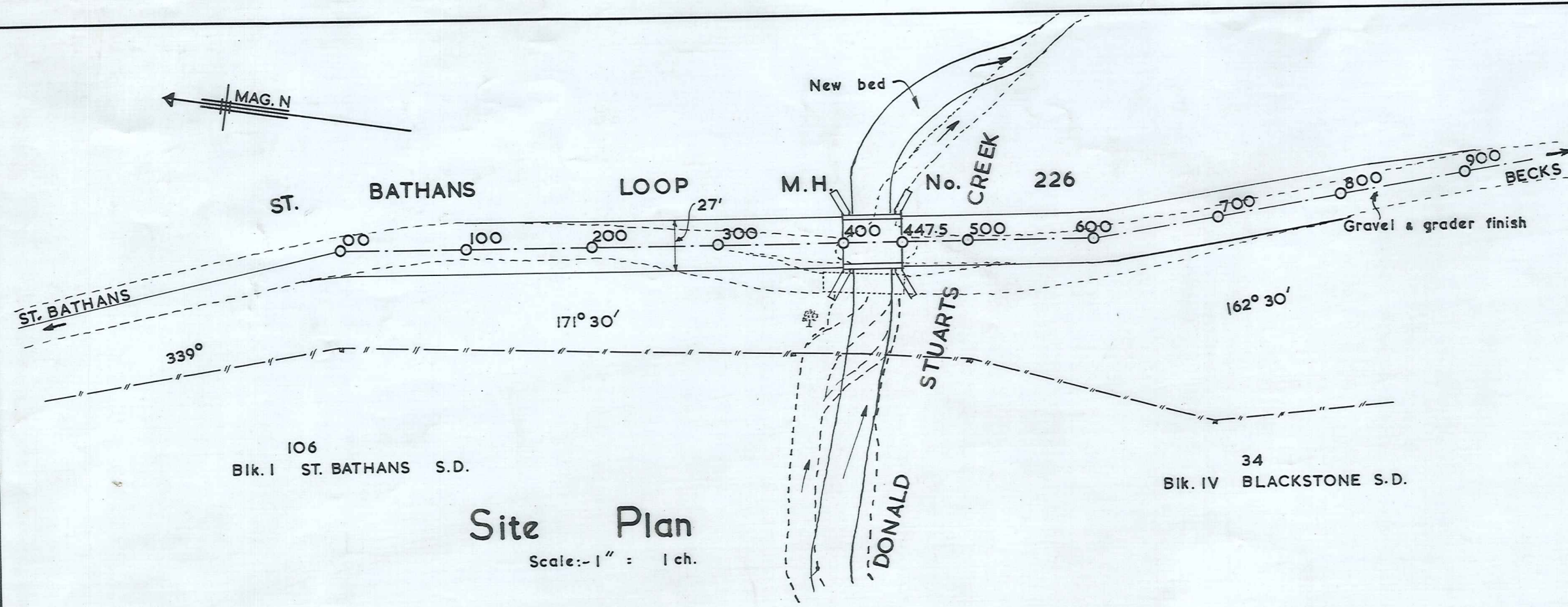
St. Bathans Loop M.H. No. 226
 DONALD STUARTS CREEK BRIDGE
 Reinforcing Schedule

SCALE: - NOT TO SCALE
 FOLDER: - 1a FILE: - 6/2
 M.C.C. 243d
 SHEET No. 4 OF 4 SHEETS

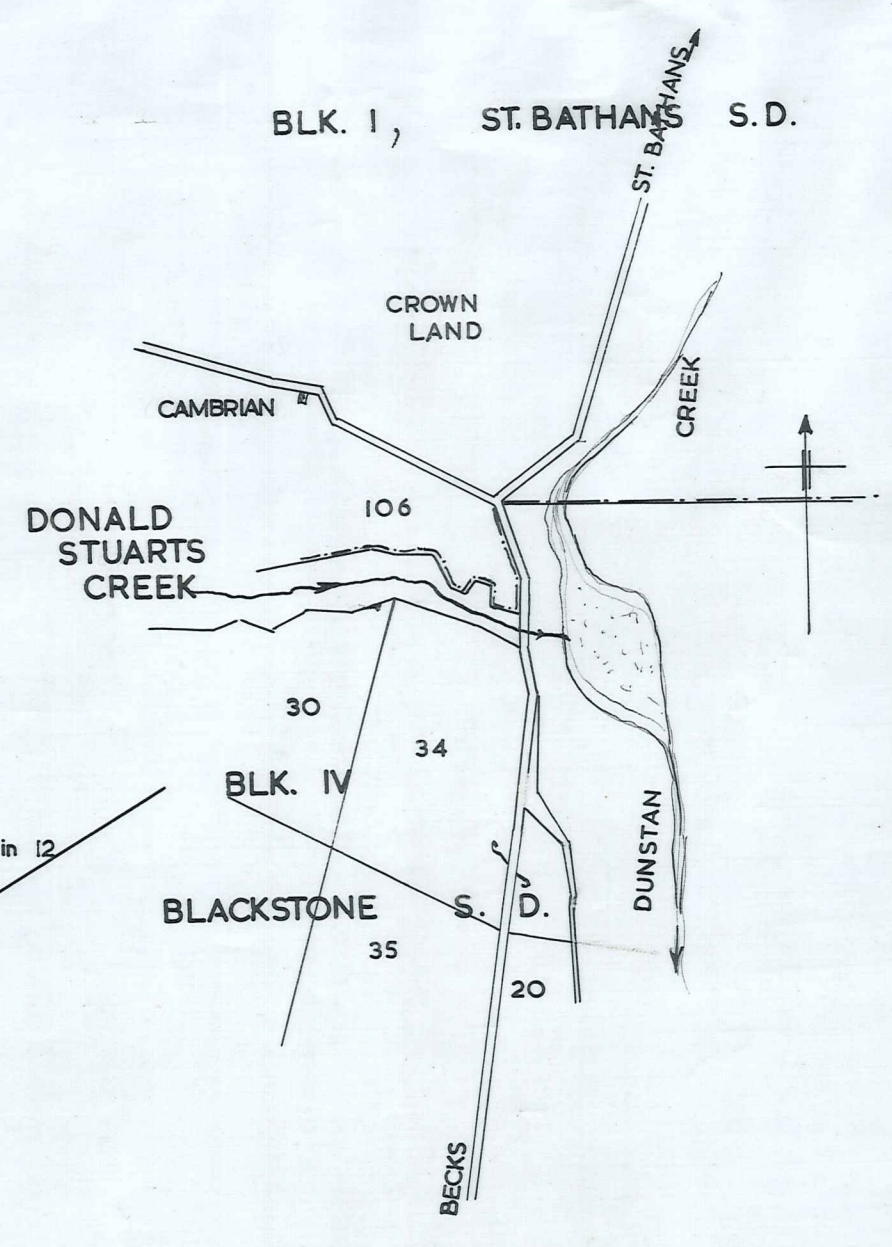
KERB		STEEL		
ROD	DESCRIPTION	DIA.	No. of	LENGTH
K1	 6" 1'-4"/>	3/8"	60	6'-6"
K2		5/8"	8	30'-6"

RAIL		STEEL		
ROD	DESCRIPTION	DIA.	No. of	LENGTH
R1	 3'-7 1/2" 4'-6" 11" 3 3/4"/>	5/8"	12	10'-6"
R2	See drawing	No.6g	24	4'-6"
R3	 2"/>	3/8"	132	8'-0"
R4		1/2"	8	12'-11 1/2"
R5		3/8"	8	12'-11 1/2"
R6	See drawing Sheet 2	No.6g	4	19'-0"

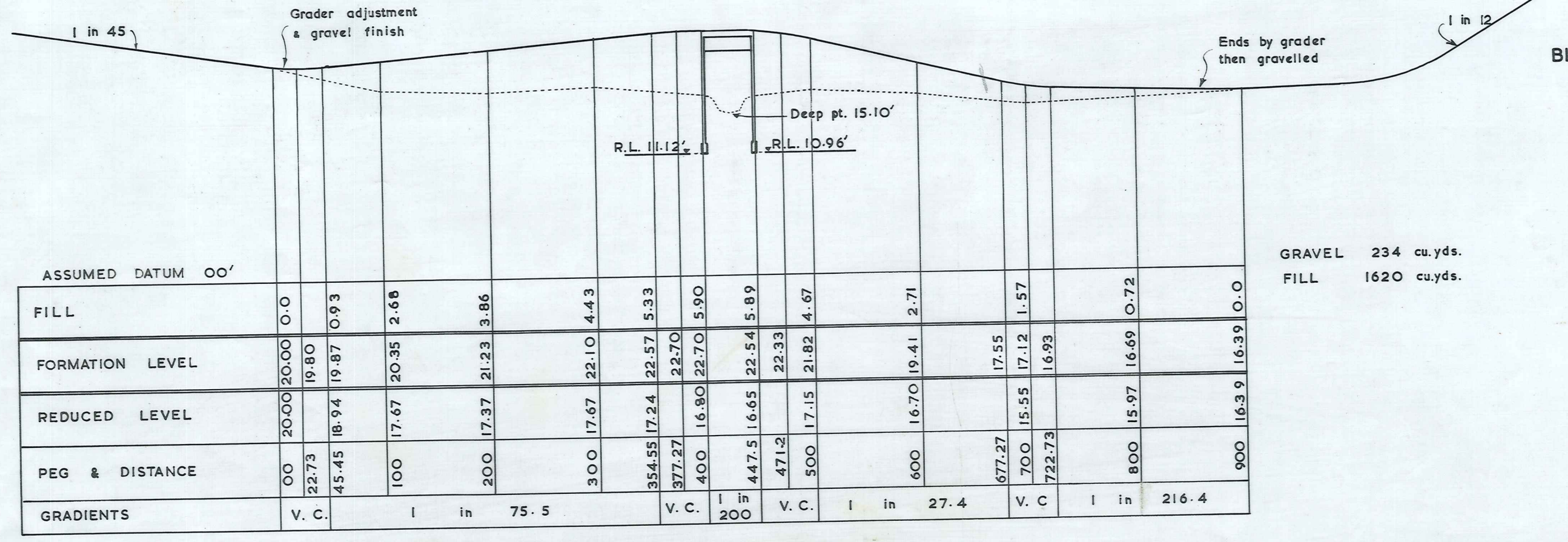
DIAM. OF RODS	LENGTH	WEIGHT
No.6g. wire	1184'	0.053 TONS
3/8"	1551'	0.260 "
1/2"	596'	0.178 "
5/8"	9514'	4.430 "
TOTAL WEIGHT		4.921 TONS



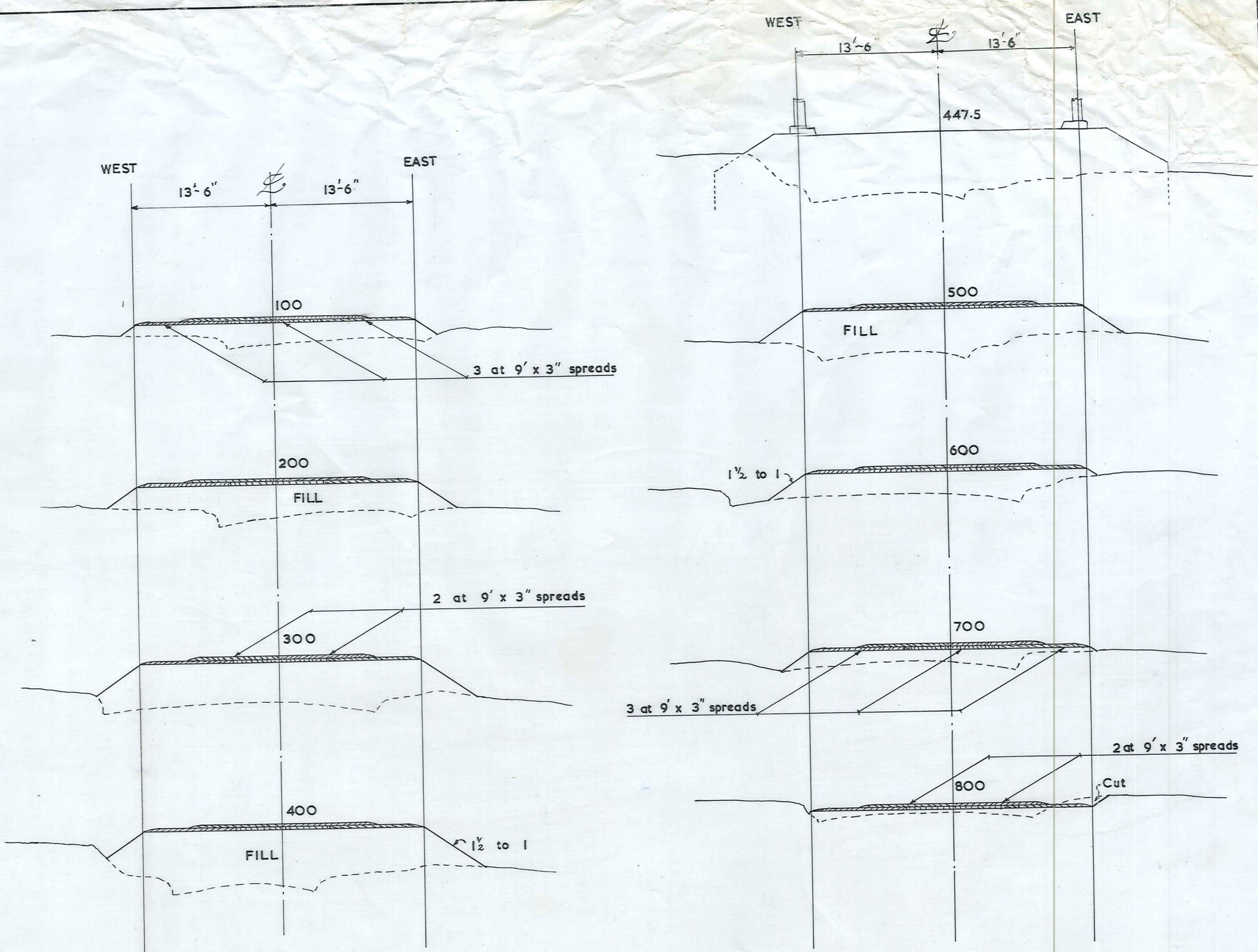
Site Plan
Scale: 1" = 1 ch.



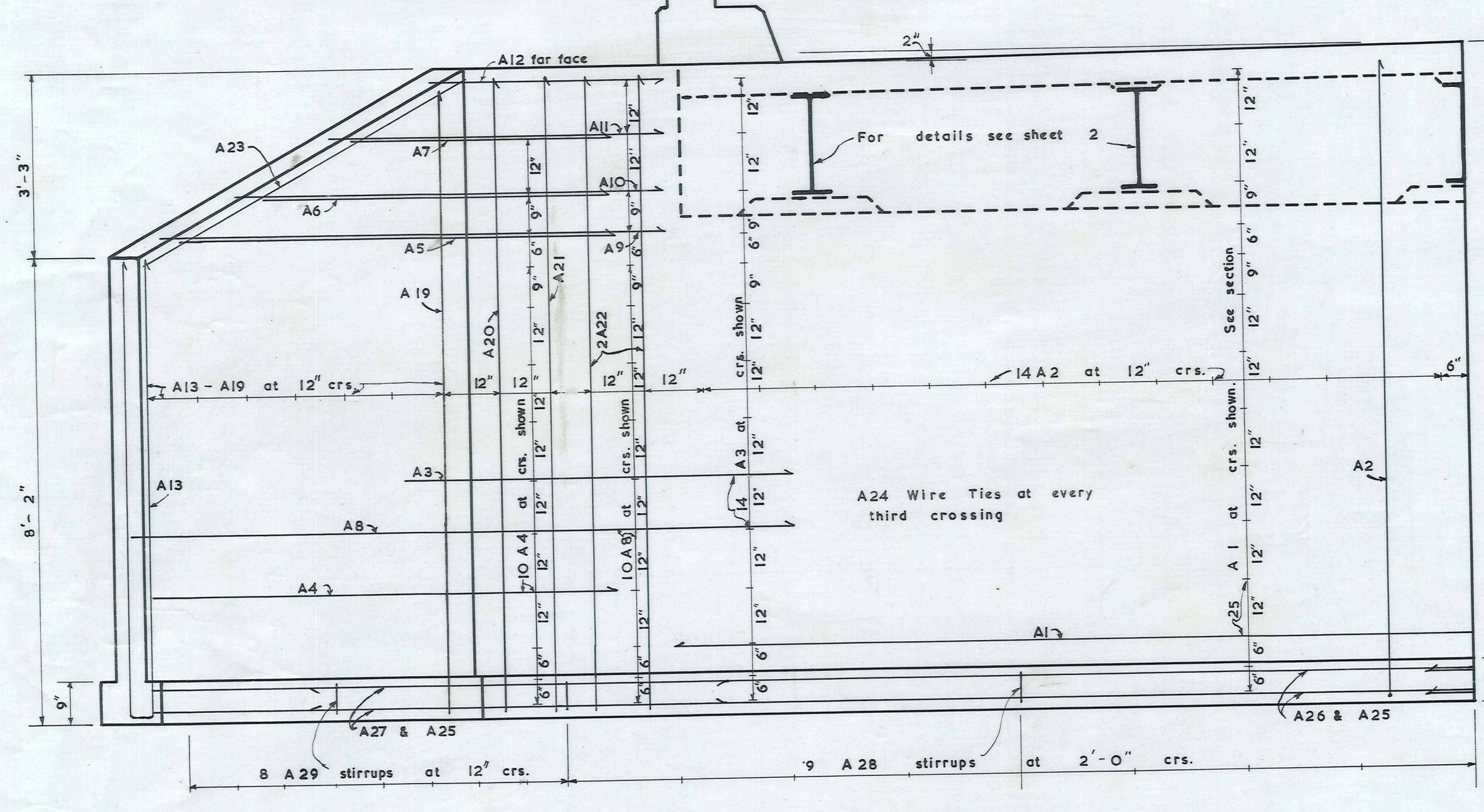
Locality Plan
Scale: 1" = 30 chs.



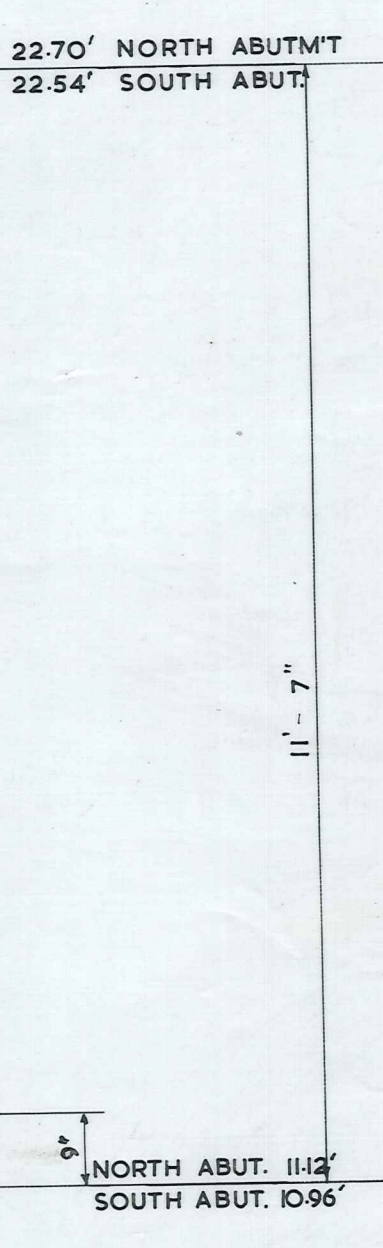
Longitudinal Section
Scale: 1" = 10' Vertical, 1" = 1 ch. Horiz.



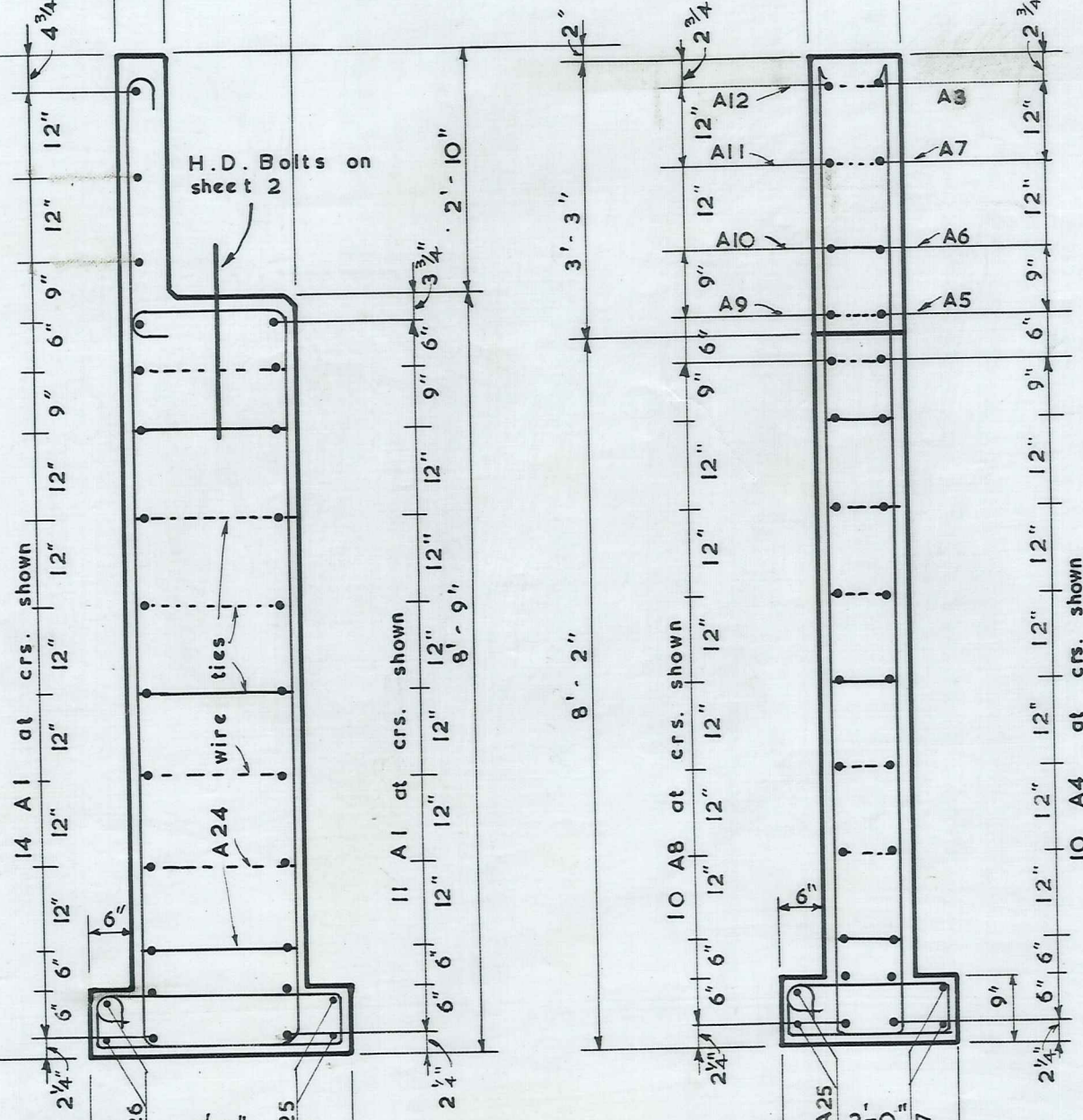
Sections of Approaches
Scale: 1" = 10'



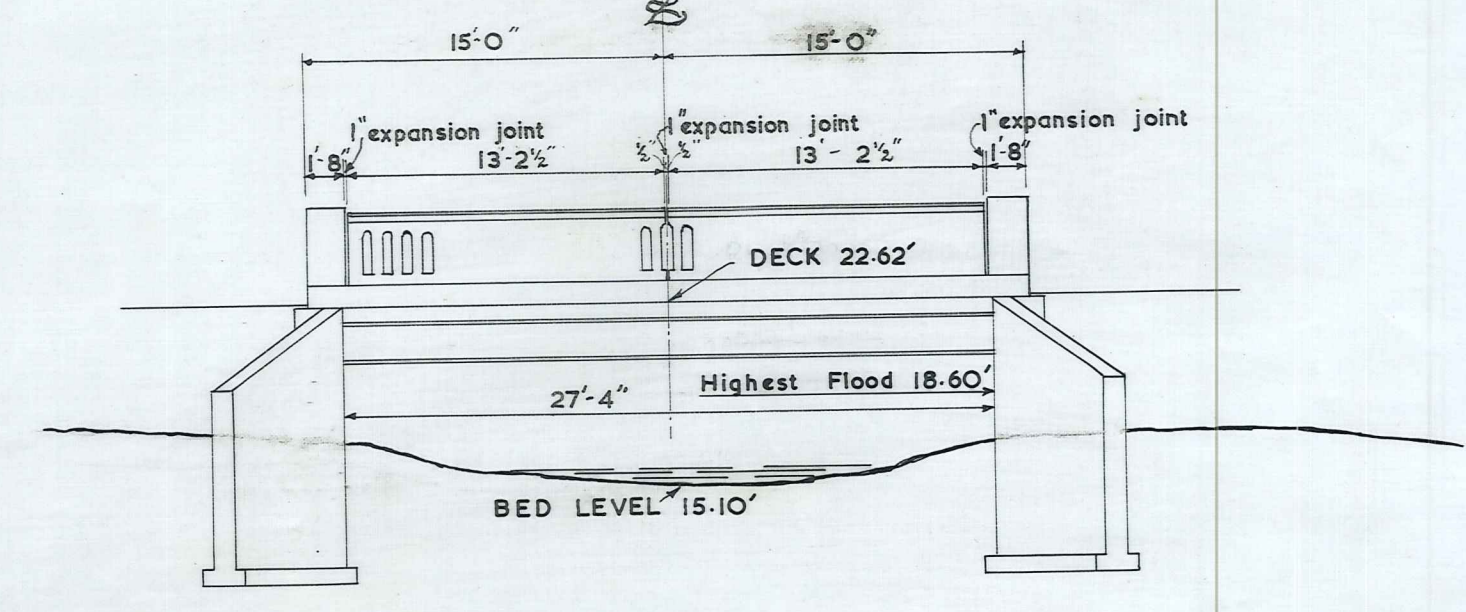
Elevation of Abutment & Wingwall
Scale: 1/2" = 1'-0"



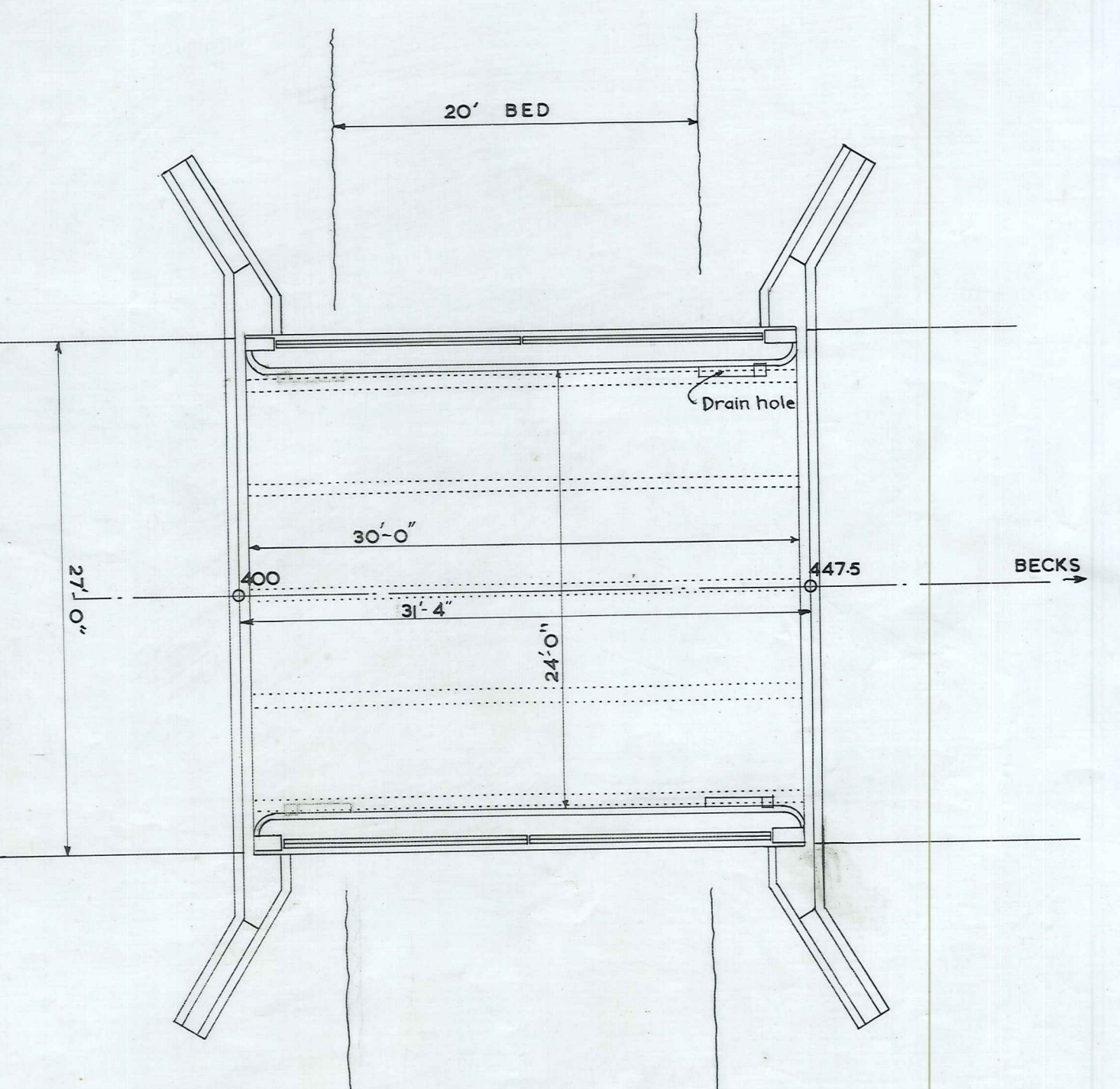
Section X-X
Scale: 1/2" = 1'-0"



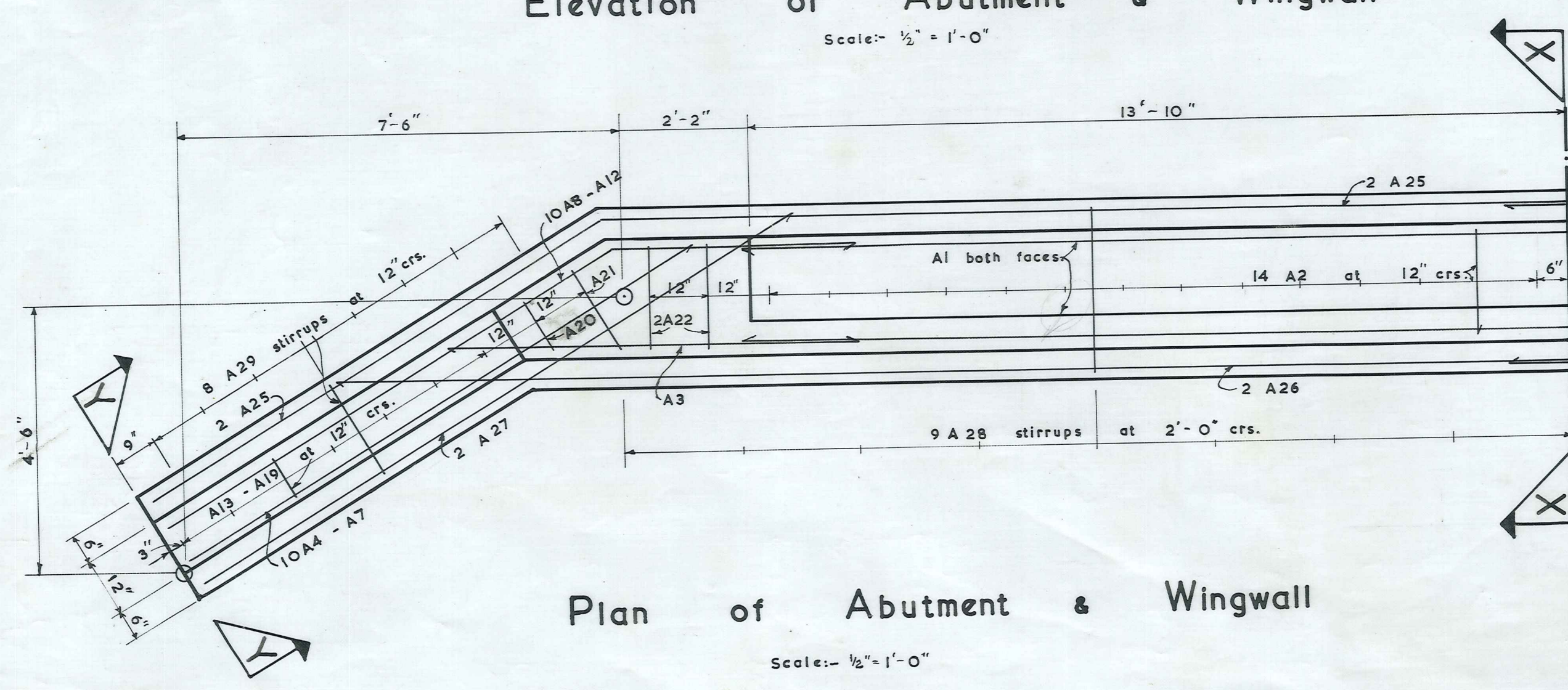
Section Y-Y
Scale: 1/2" = 1'-0"



Elevation of Bridge
Scale: 1/8" = 1'-0"



Plan of Bridge
Scale: 1/8" = 1'-0"

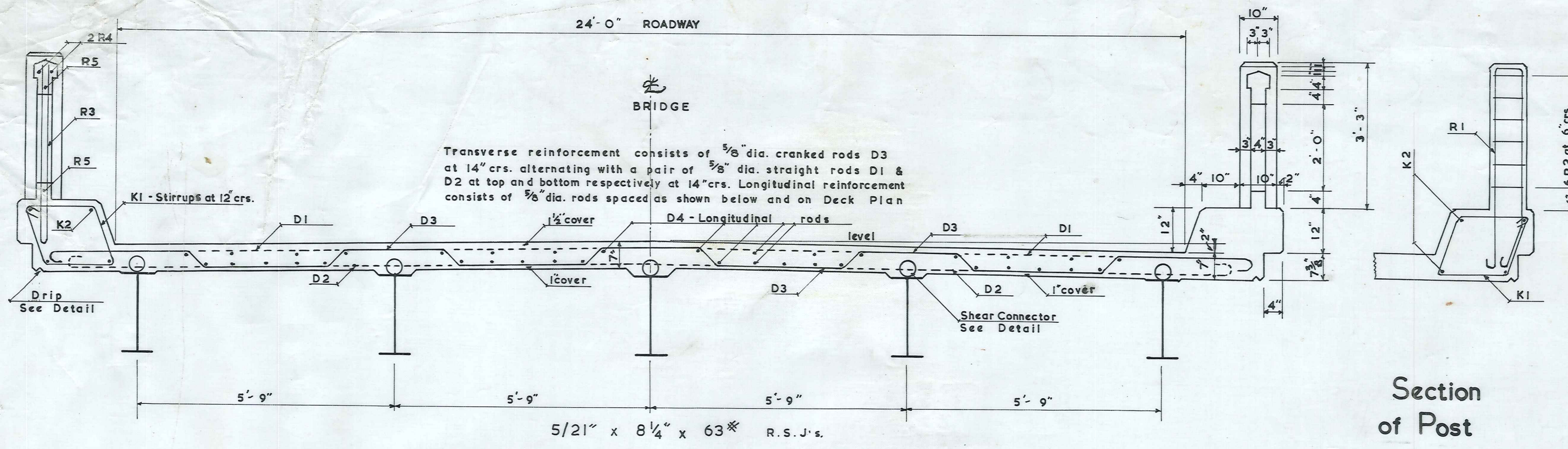


Plan of Abutment & Wingwall
Scale: 1/2" = 1'-0"

MINIMUM COVER TO OUTSIDE RODS TO BE 1 1/2" UNLESS OTHERWISE SHOWN

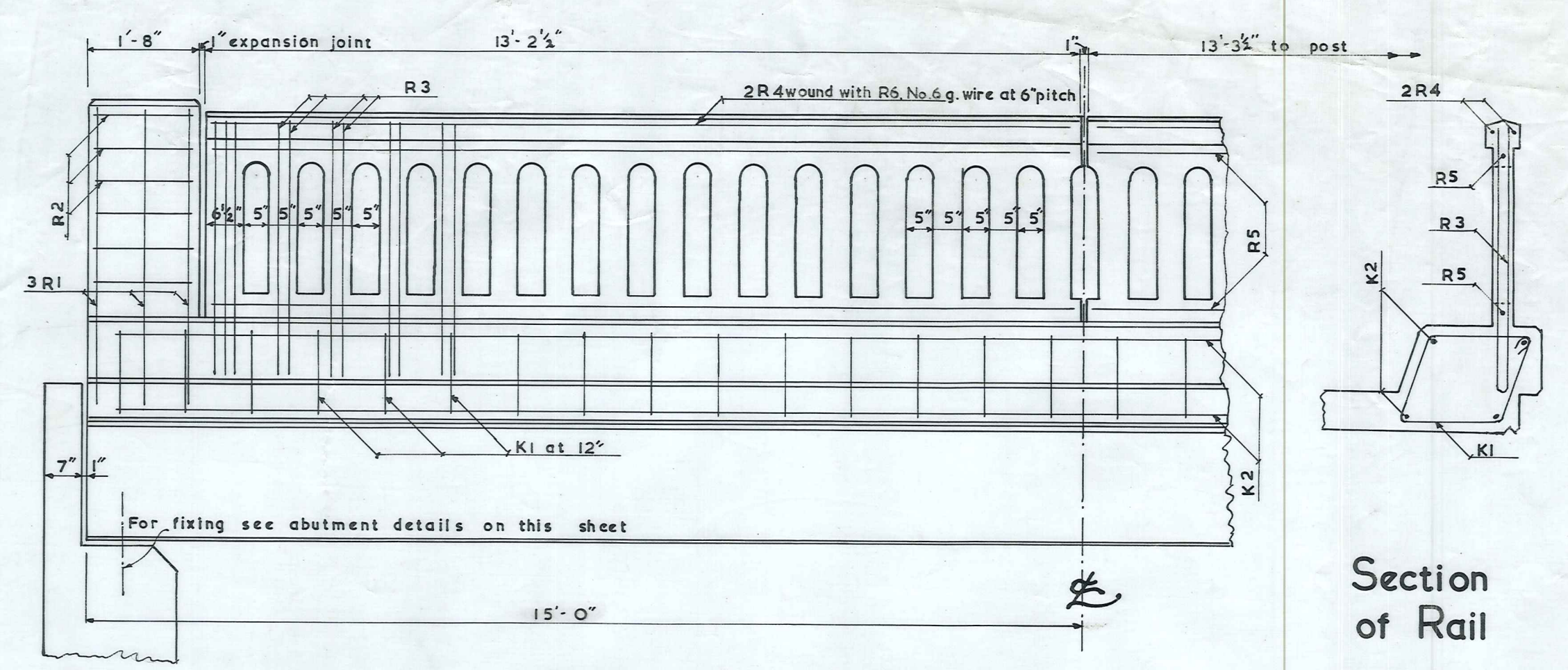
Design Loading H20-S16

MANITOTO COUNTY	ST. BATHANS LOOP MAIN HIGHWAY No. 226	SCALES: AS SHOWN
	DONALD STUARTS CREEK BRIDGE	FOLDER: 1A FILE: 6/2
8953 R.J. Black County Engineer	RENEWAL 30' SPAN R.S.J. BEAMS	M.C.C. 243a
CONTRACT No.	LOCALITY & APPROACHES, ABUTMENT & WINGWALLS	SHEET No. 1 OF 4 SHEETS
376		



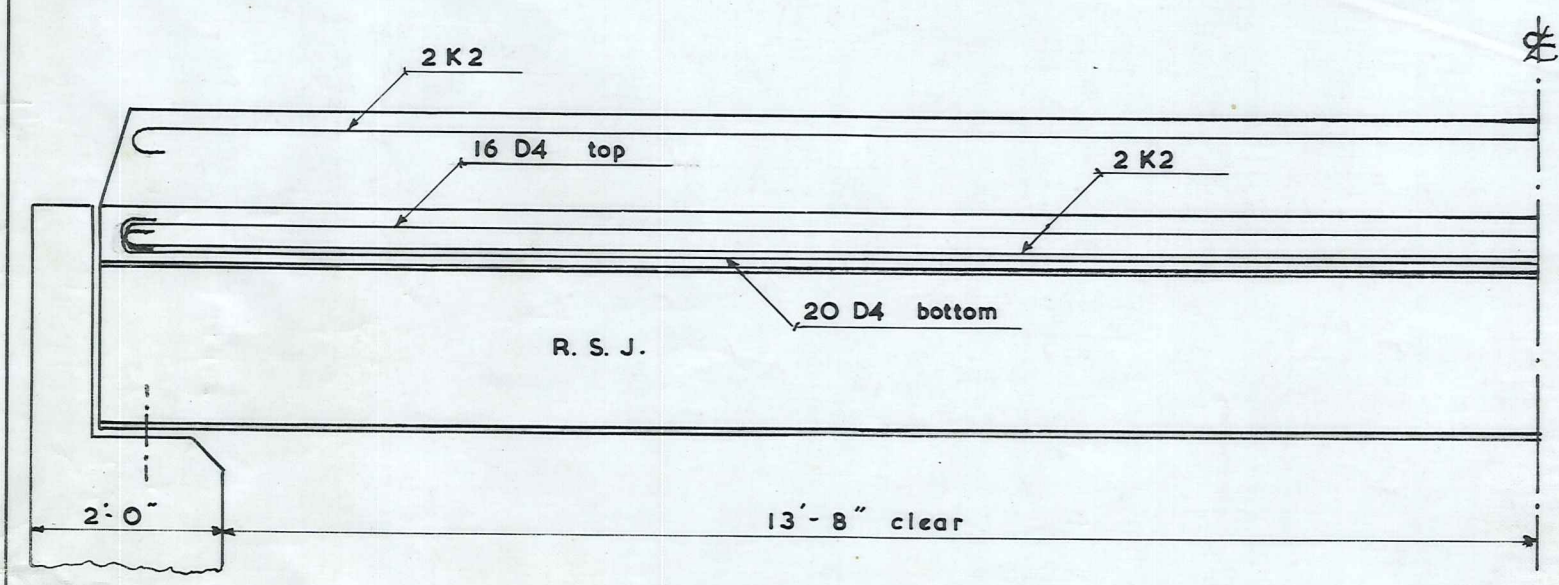
Cross Section of Bridge
SCALE: 1/2" = 1'-0"

Section of Post
SCALE: 1/2" = 1'-0"

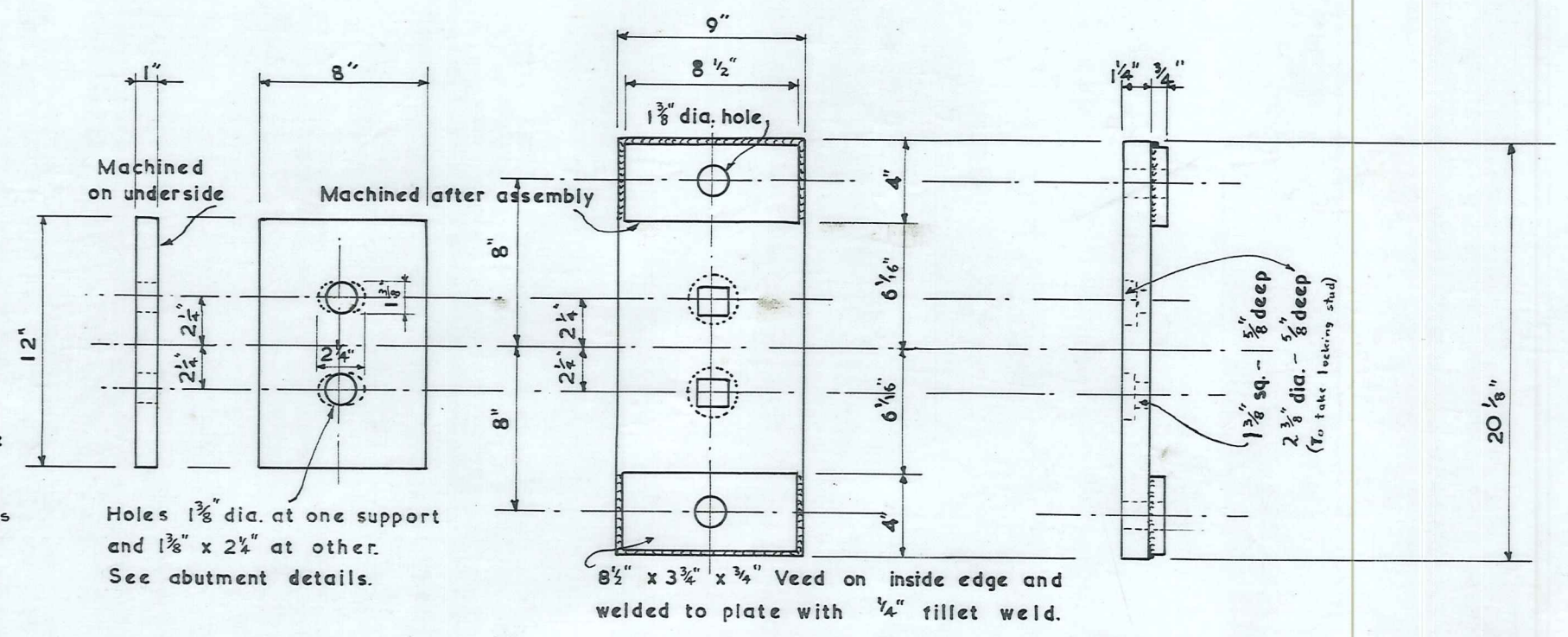
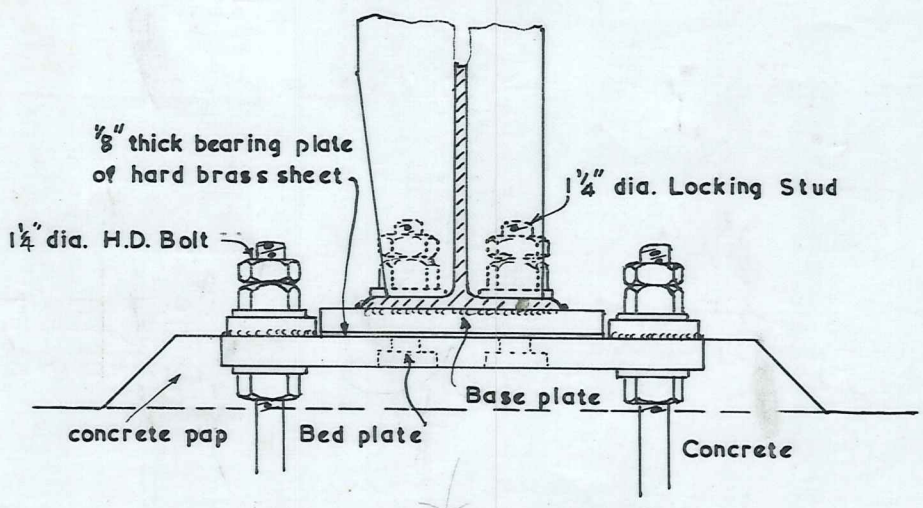
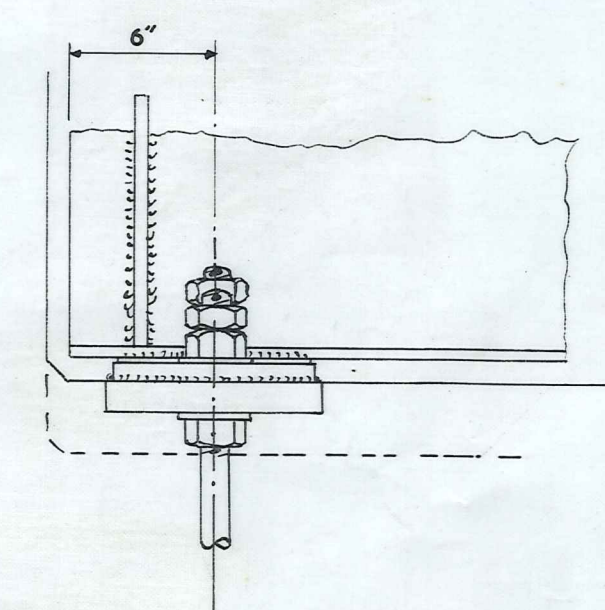


Elevation of Post & Rails
SCALE: 1/2" = 1'-0"

Section of Rail
SCALE: 1/2" = 1'-0"

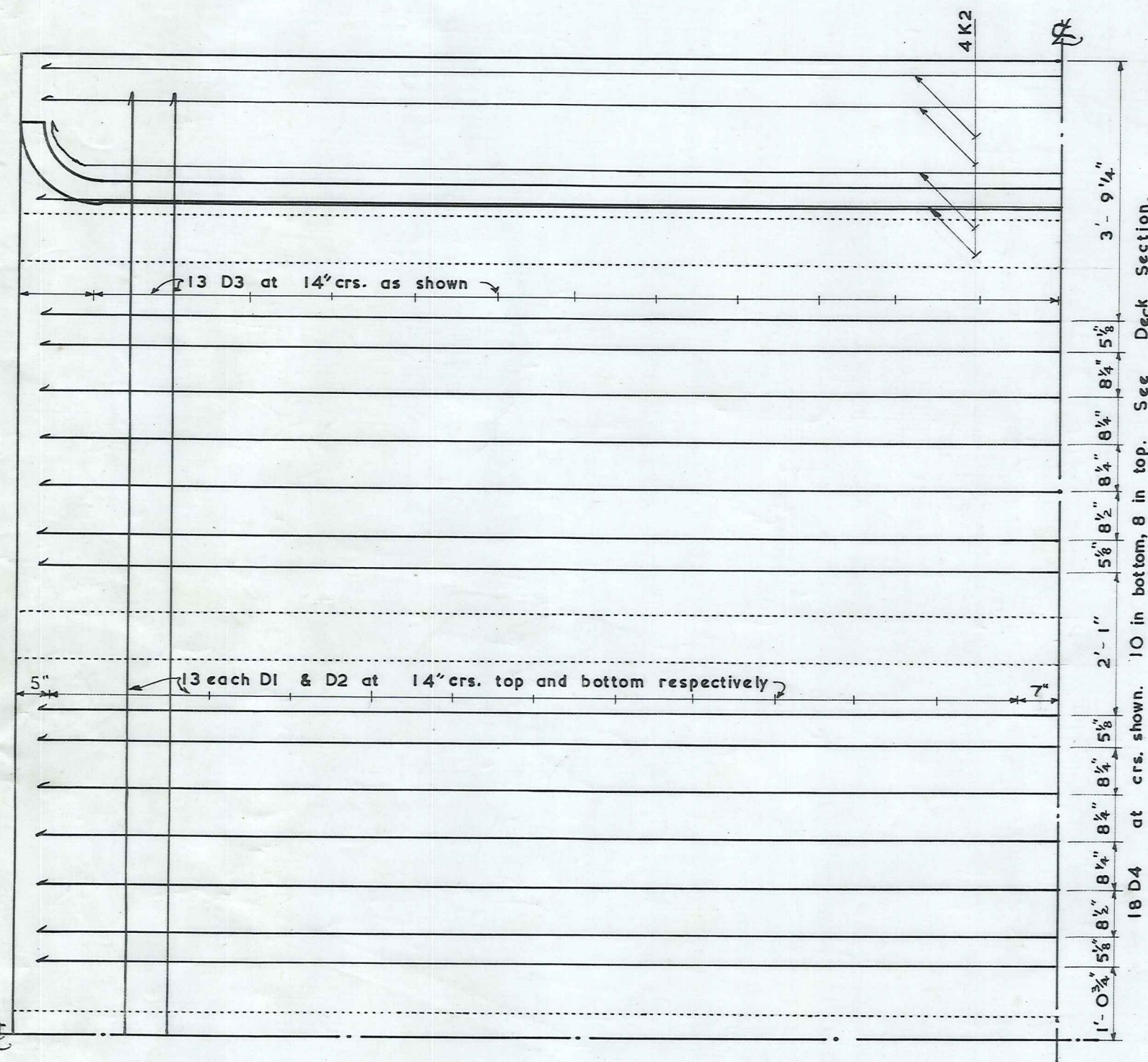


Section of Deck
STIRRUPS & TRANSVERSE RODS OMITTED
Scale: 1/2" = 1'-0"



Base Plate
SCALE: 1 1/2" = 1'-0"

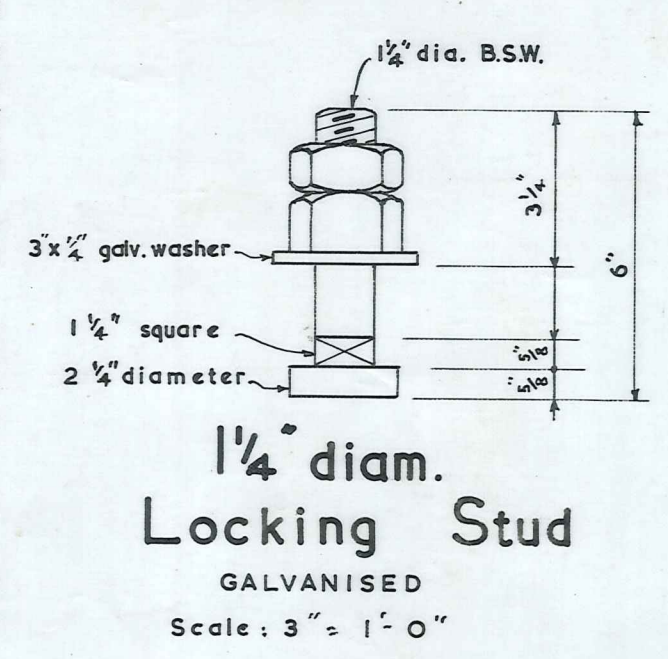
Bed Plate
SCALE: 1 1/2" = 1'-0"



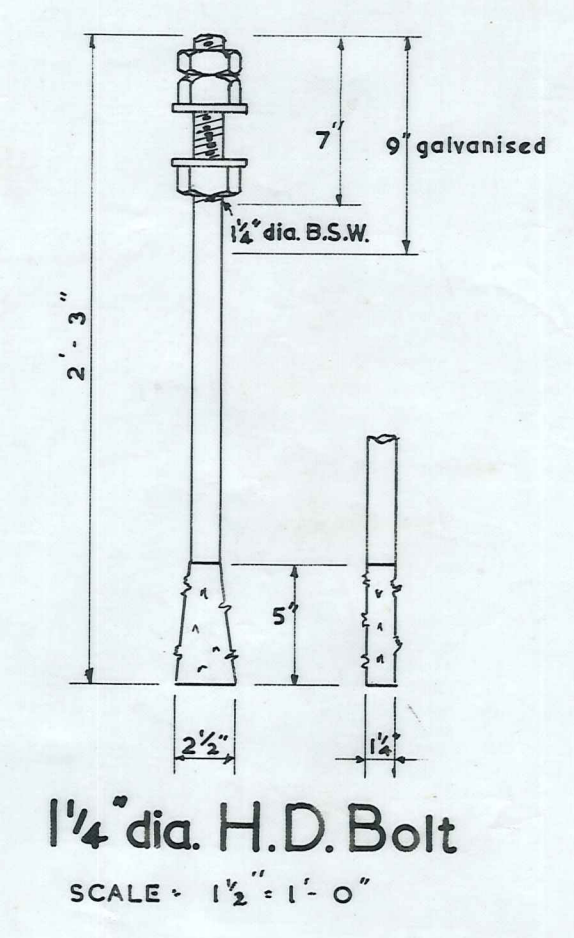
Plan of Deck
IN PART ONLY, TO SHOW DECK REINFORCING
Scale: 1/2" = 1'-0"

Layout at Abutments
SCALE: 1 1/2" = 1'-0"

Abutment Details Sliding End
SCALE: 1" = 1'-0"



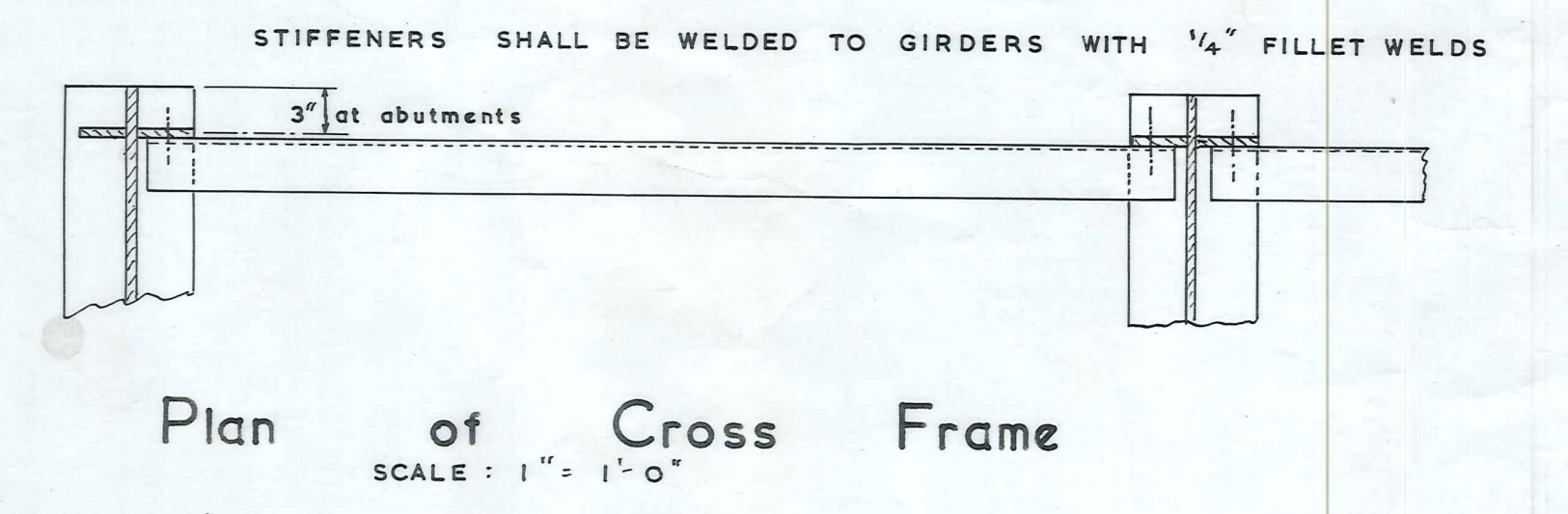
1/4" diam. Locking Stud
GALVANISED
Scale: 3" = 1'-0"



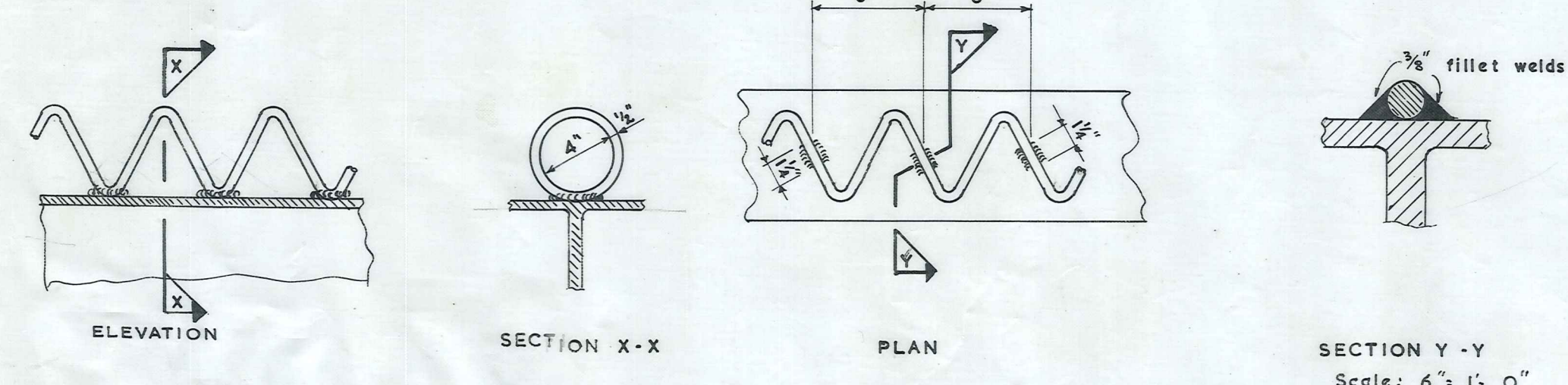
1/4" dia. H.D. Bolt
SCALE: 1 1/2" = 1'-0"

Abutment Details Fixed End
SCALE: 1" = 1'-0"

Elevation of Cross Frame at Abutment & Midspan
BOLT HOLES IN CHANNELS & STIFFENERS TO BE DRILLED 1 3/8" & REAMERED OUT TO TAKE 3/4" dia. TURNED BOLTS, TO B. S. S. 153, page 11.



Plan of Cross Frame
SCALE: 1" = 1'-0"



Details of Shear Connectors
Scale: 1 1/2" = 1'-0"

CONSTRUCTION NOTES

The steel joists shall not be propped at midspan during construction of the deck slab. The pouring of the deck slab shall not be put in hand until all the transverse stiffening frames are fixed in place and finally bolted up.

During erection the contact surfaces of the base and bed plates shall be coated with heavy graphite grease and separated with a sheet of 1/8" hard brass sheet.

The nuts on the H.D. Bolts in the bed plates should be firmly tightened down when the bed plates have been set to line and level. The nuts on the Locking Studs must not be tightened down hard onto the lower flange of the girder or onto the base plate. A clearance of 1/4" should exist after the nuts are locked together. This applies at both ends.

Allowance for deflection, see specifications.

MINIMUM COVER TO OUTSIDE RODS 1 1/2" UNLESS OTHERWISE SHOWN.

Drip Detail
SCALE: 3" = 1'-0"

Typical Lap & Hooks

to accompany Greymp Bridge Plans

Desk 2725/3

MANIOTOTO COUNTY	St. Bathans Loop M. H. No. 226	SCALES - AS SHOWN
22/1/83 R.J. Black	DONALD STUARTS CREEK BRIDGE	FOLDER: 1d FILE: 6/2
CONTRACT No. 376	RENEWAL ~ 30' SPAN ~ R.S.J. BEAMS	M.C.C. 2431
	DETAILS FIXING OF BEAMS & SUPERSTRUCTURE	SHEET No. 2 OF 4 SH

Details of this sheet are taken from Plans P.W.D. 120993 & P.W.D. 121152