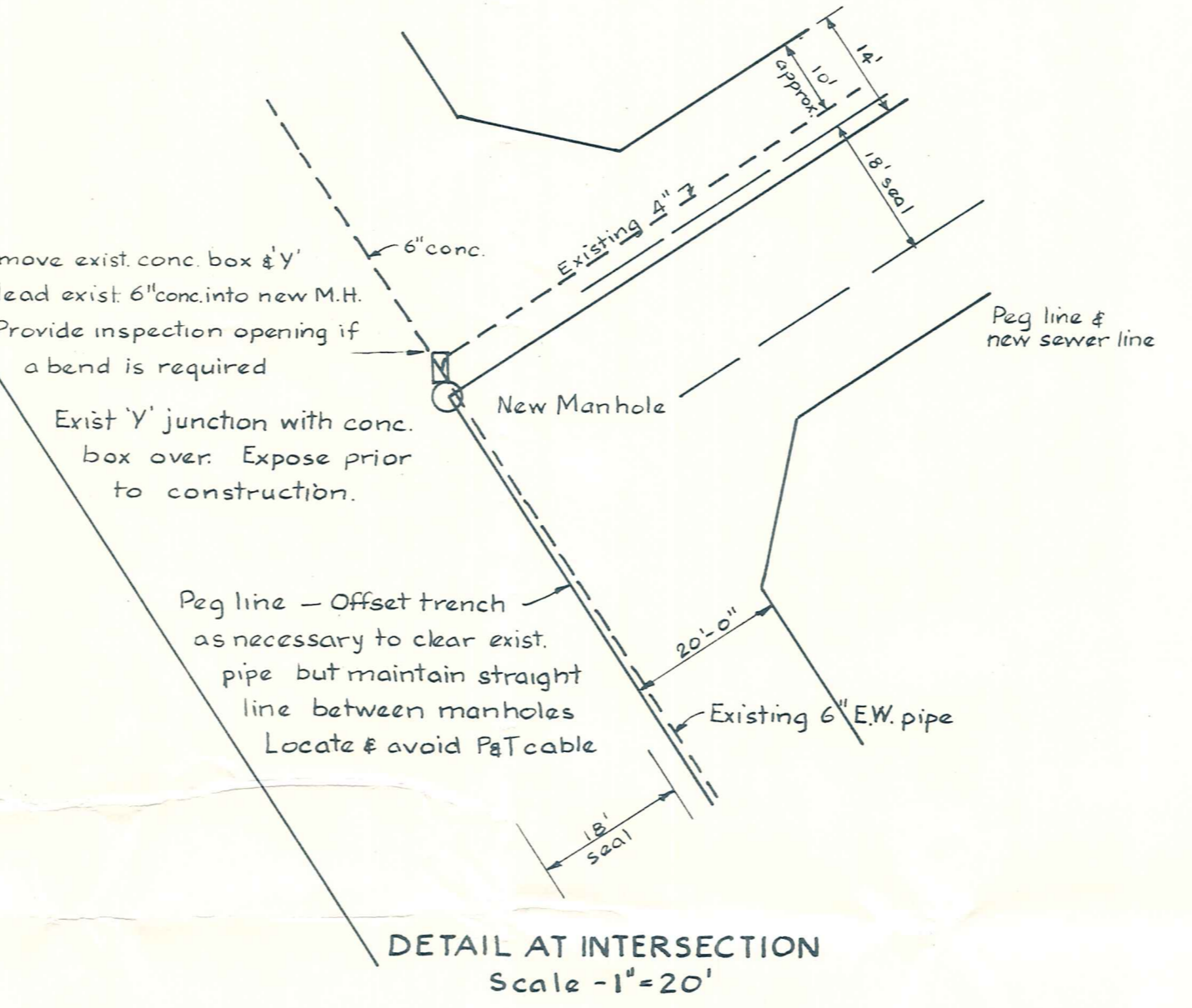
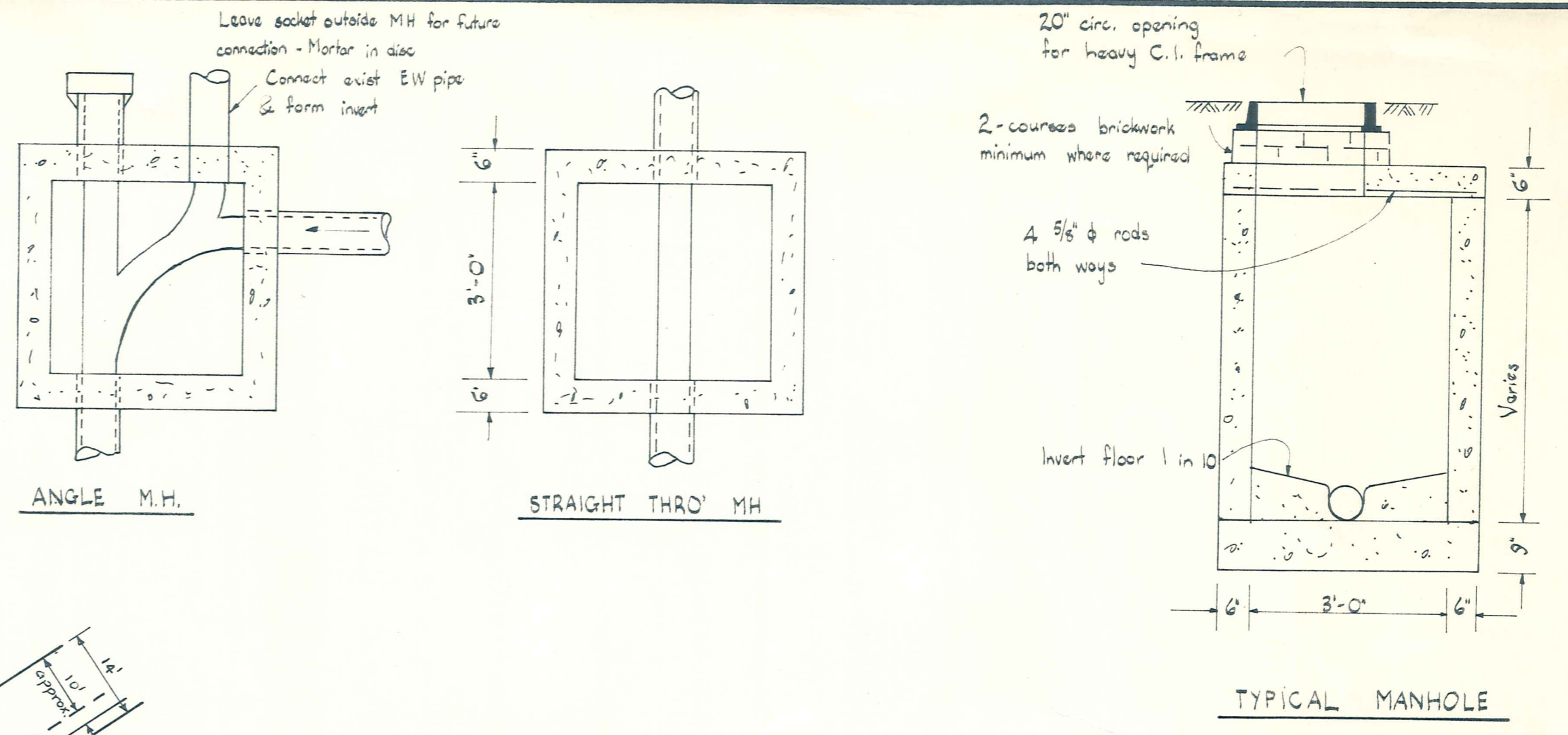


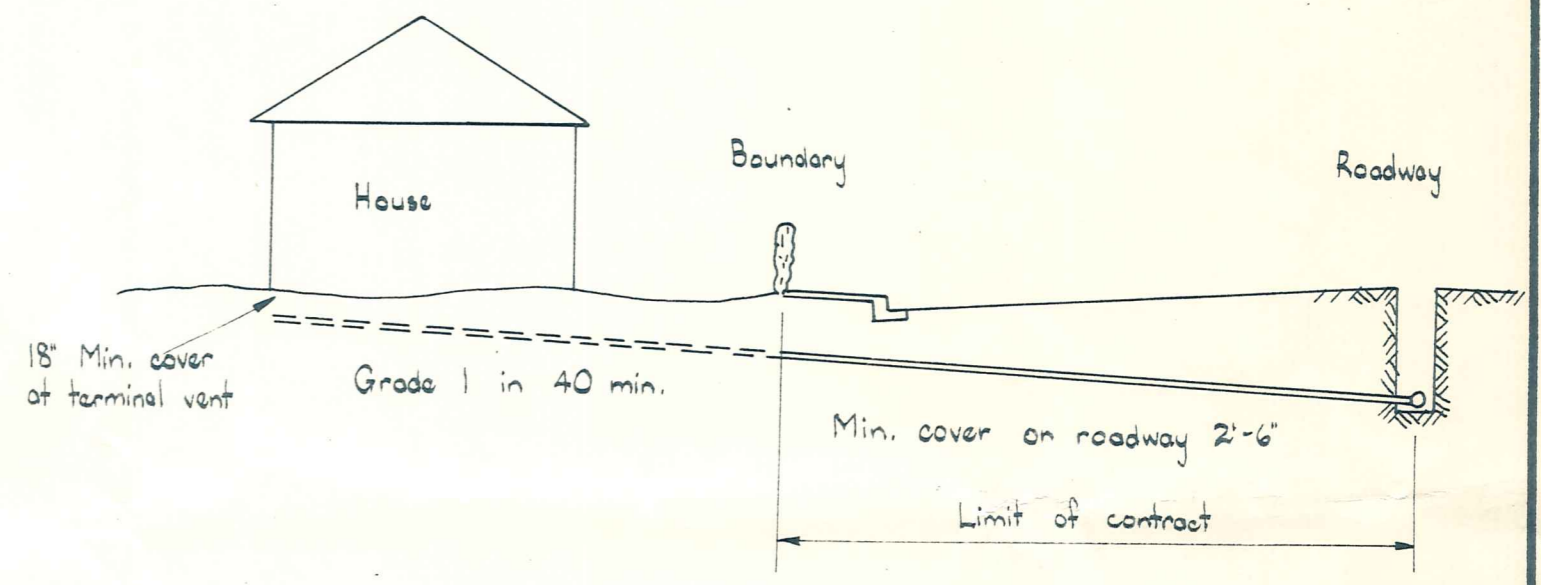
PLAN
SCALE 1"=2ch.



DETAIL AT INTERSECTION
Scale - 1"=20'



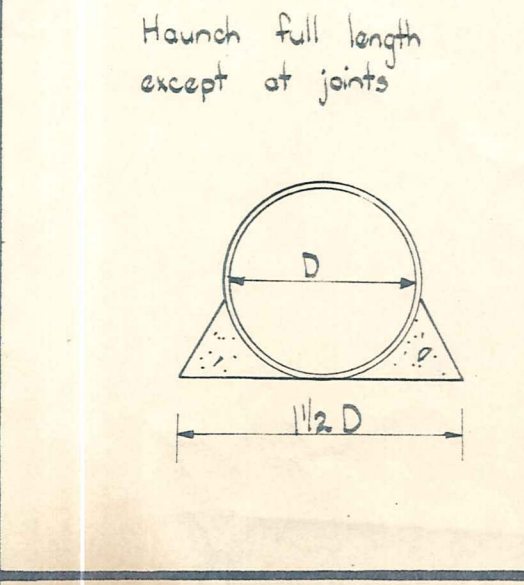
TYPICAL MANHOLE



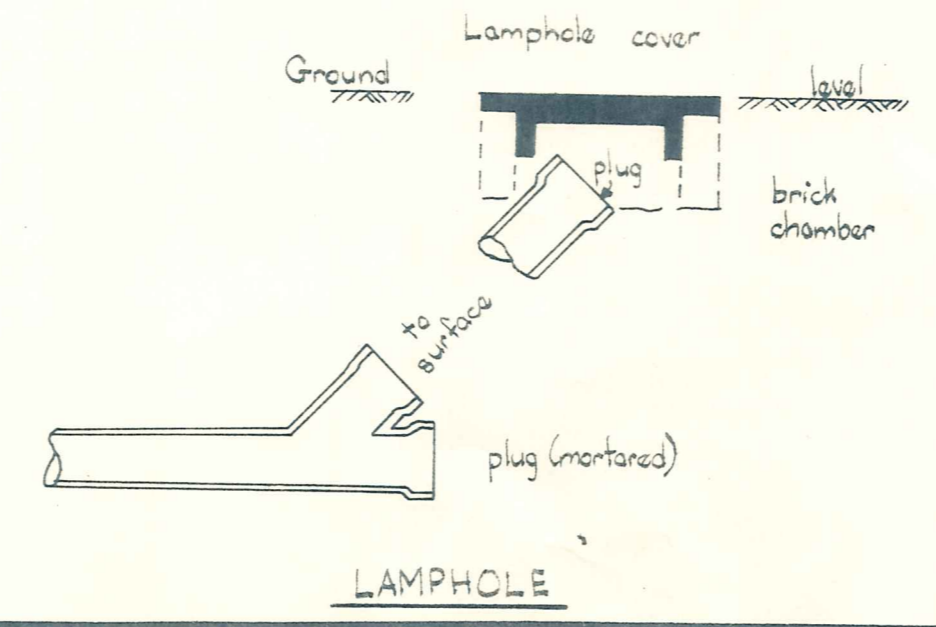
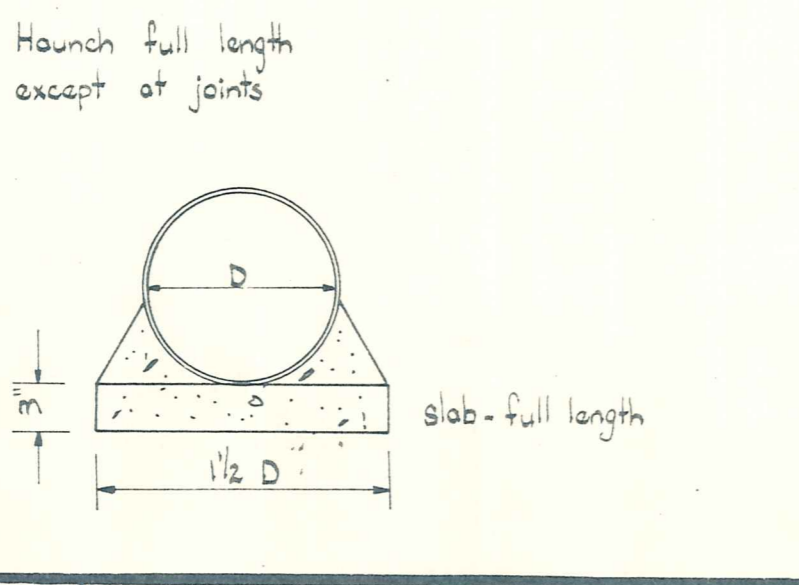
18" Min. cover at terminal vent
Grade 1 in 40 min.
Min. cover on roadway 2'-6"
Limit of contract

	Cobham Cres.					Plunket Street					Lamphole		
CHAINAGE	0/00	1/00	2/00	3/00	4/00	5/00	5/93	1/00	2/00	3/00	4/00	5/00	6/00
PEG LEVEL	87.77	88.06	87.80	87.91	88.43	88.93	89.79	90.51	91.53	92.35	92.49	93.19	93.53
INVERT LEVEL	83.00	83.30	83.60	83.99	84.20	84.50	84.78	85.15	85.45	85.75	86.05	86.35	86.55
DEPTH TO INVERT	4.77	4.76	4.20	4.01	4.23	4.43	5.01	5.36	6.08	6.60	6.44	6.84	6.98
GRADE	0.30' ch					0.30' ch							

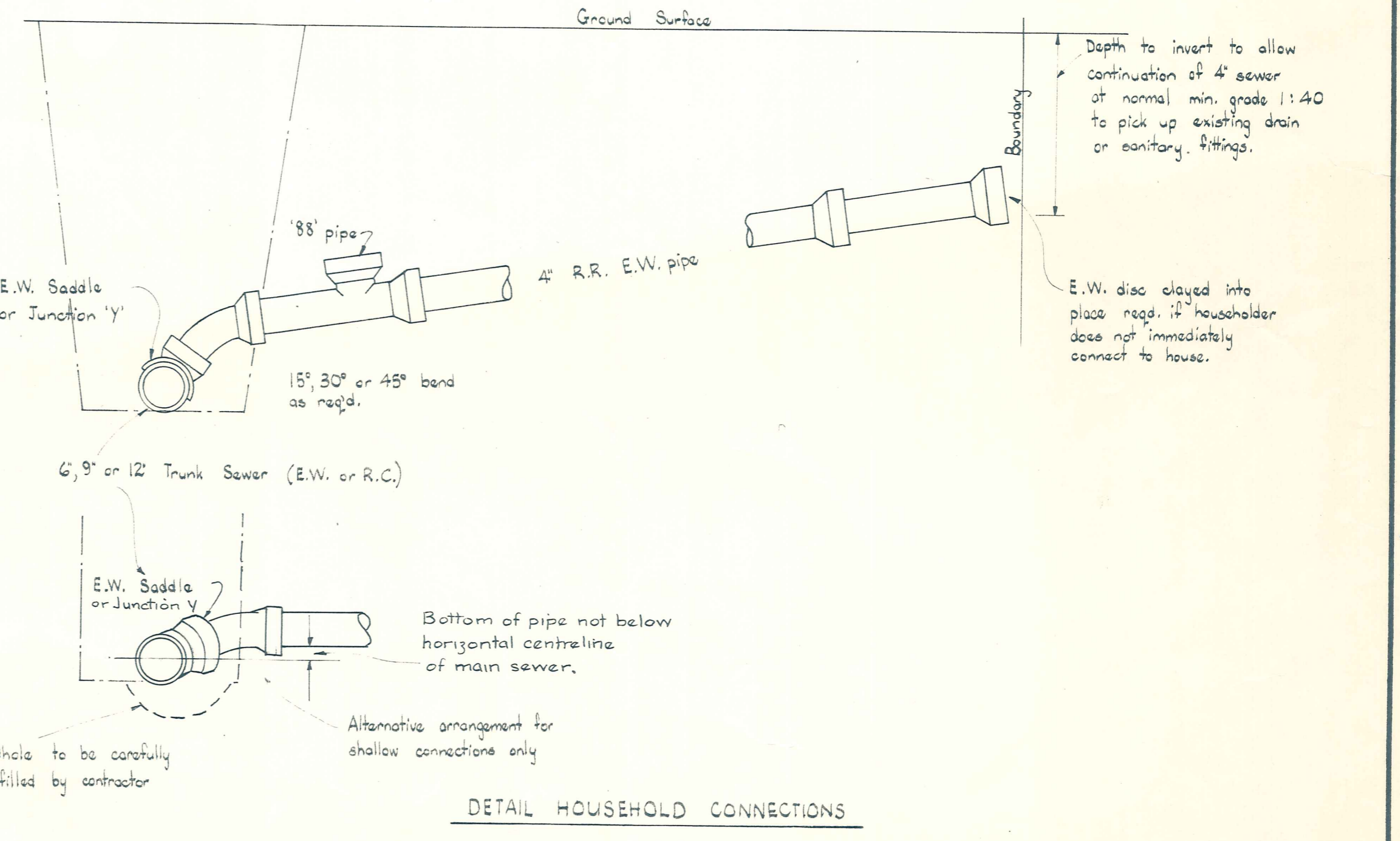
LONGSECTION
Scale: 1ch to 1inch.



HAUNCHING



LAMPHOLE



DETAIL HOUSEHOLD CONNECTIONS

AMENDMENTS				NAME	DATE
No.	By	Date	Description	Apprd.	Surveyed
					G. J. Dillen
					Drawn
					Calculations
					Traced W. Bailden 7.2.68
					Checked
					Approved [Signature] Feb 68