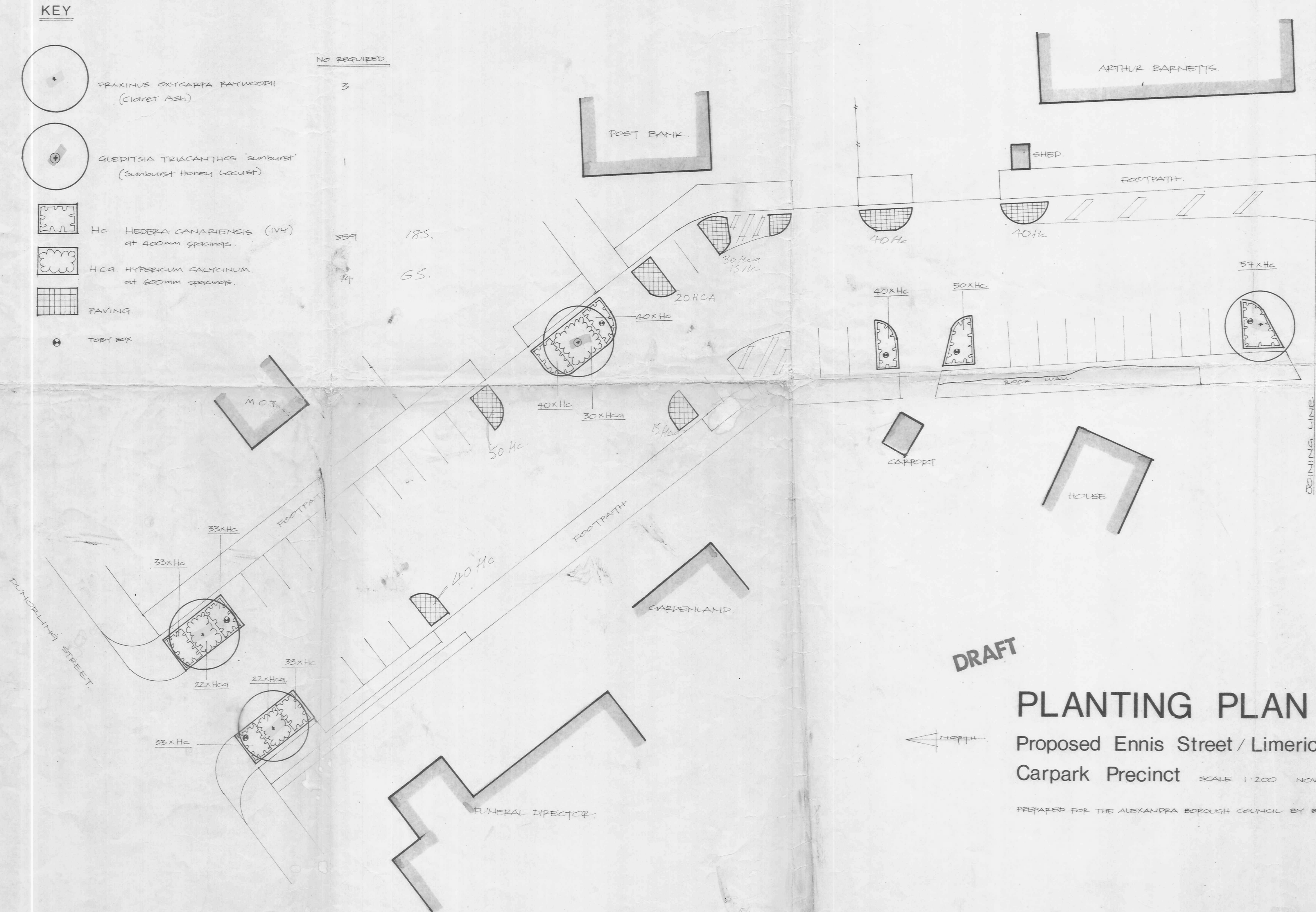


KEY

	FRAXINUS OXYCARPA PATWOODII (Claret Ash)	NO. REQUIRED	3
	GLEDITSIA TRIACANTHOS 'SUNBURST' (Sunburst Honey Locust)		1
	Hc HEDERA CANARIENSIS (IVY) at 400mm spacings.	359	185.
	HCA HYPERICUM CALYCEUM at 600mm spacings.	74	65.
	PAVING		
	TOBY BOX		



DRAFT

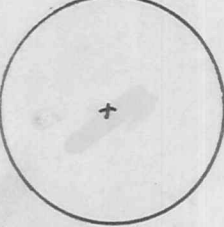
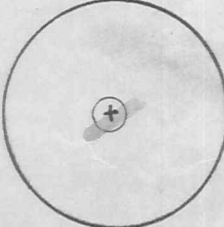
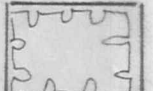
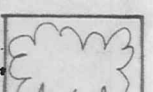
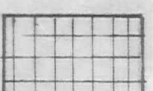

PLANTING PLAN (SHEET 1 of 2)

Proposed Ennis Street / Limerick Properties
Carpark Precinct

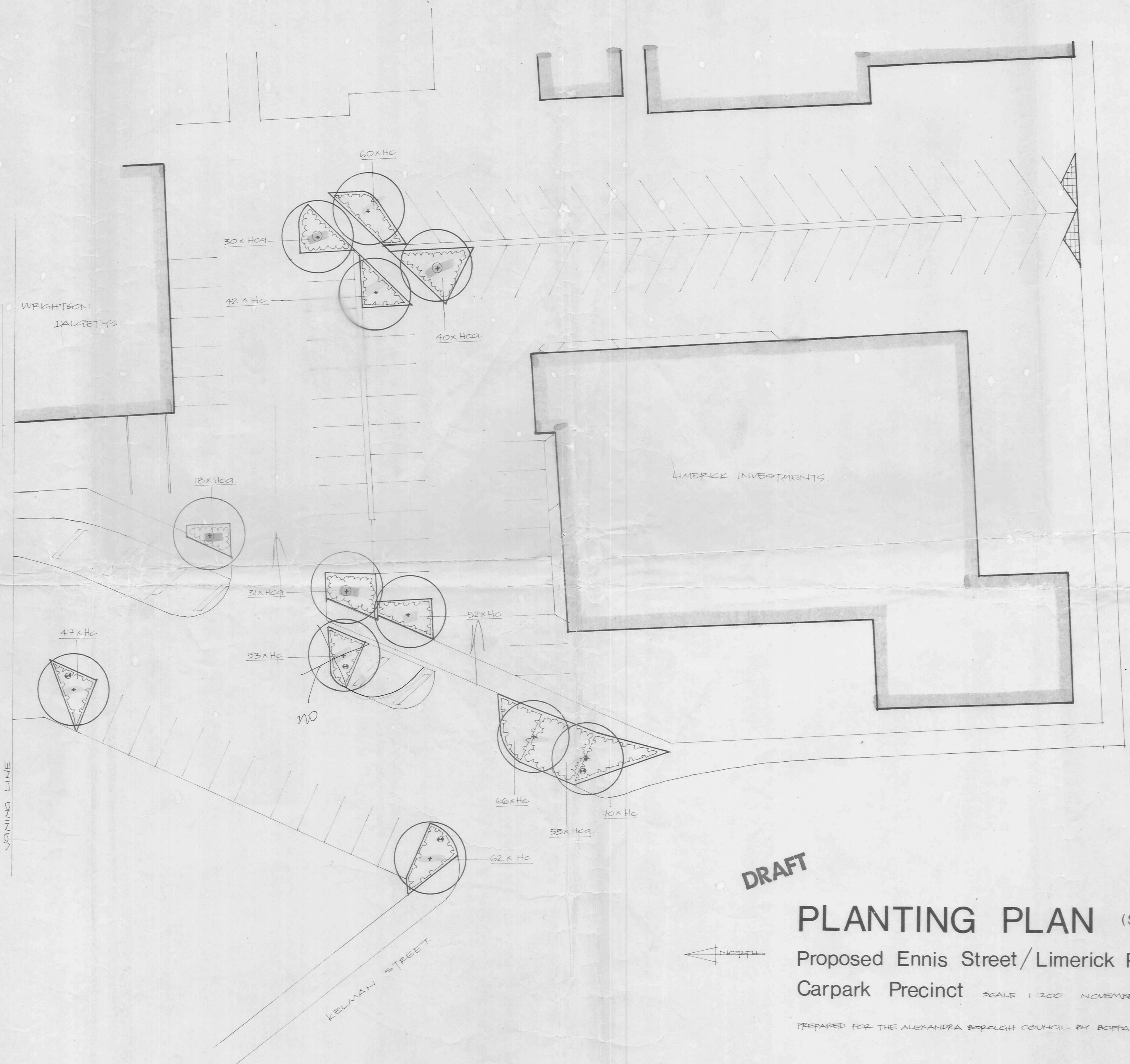
SCALE 1:200 NOVEMBER 1988 REF: 1386

PREPARED FOR THE ALEXANDRA BOROUGH COUNCIL BY BOFFA MISKELL PARTNERS LTD. GREENSTOWN.

KEY

	FRAXINUS OXYCARPA RAYWOODII (Claret Ash)	8
	GLEBETISIA TRIACANTHOS Sunkurst (Sunkurst Honey Locust) <i>Liquid Amber</i>	4
	Hc HEDERA CANARIENSIS (IVY) at 400mm spacings	452
	Hca. HYPERICUM CALYCINUM at 600mm spacings	174
	PAVING	
	TOBY BOX	

NO REQUIRED



DRAFT

PLANTING PLAN (SHEET 2 of 2)

Proposed Ennis Street/Limerick Properties
Carpark Precinct SCALE 1:200 NOVEMBER 1988 REF: 1386

PREPARED FOR THE ALEXANDRA BOROUGH COUNCIL BY BOFFA MISKELL PARTNERS LTD. GREENSTOWN