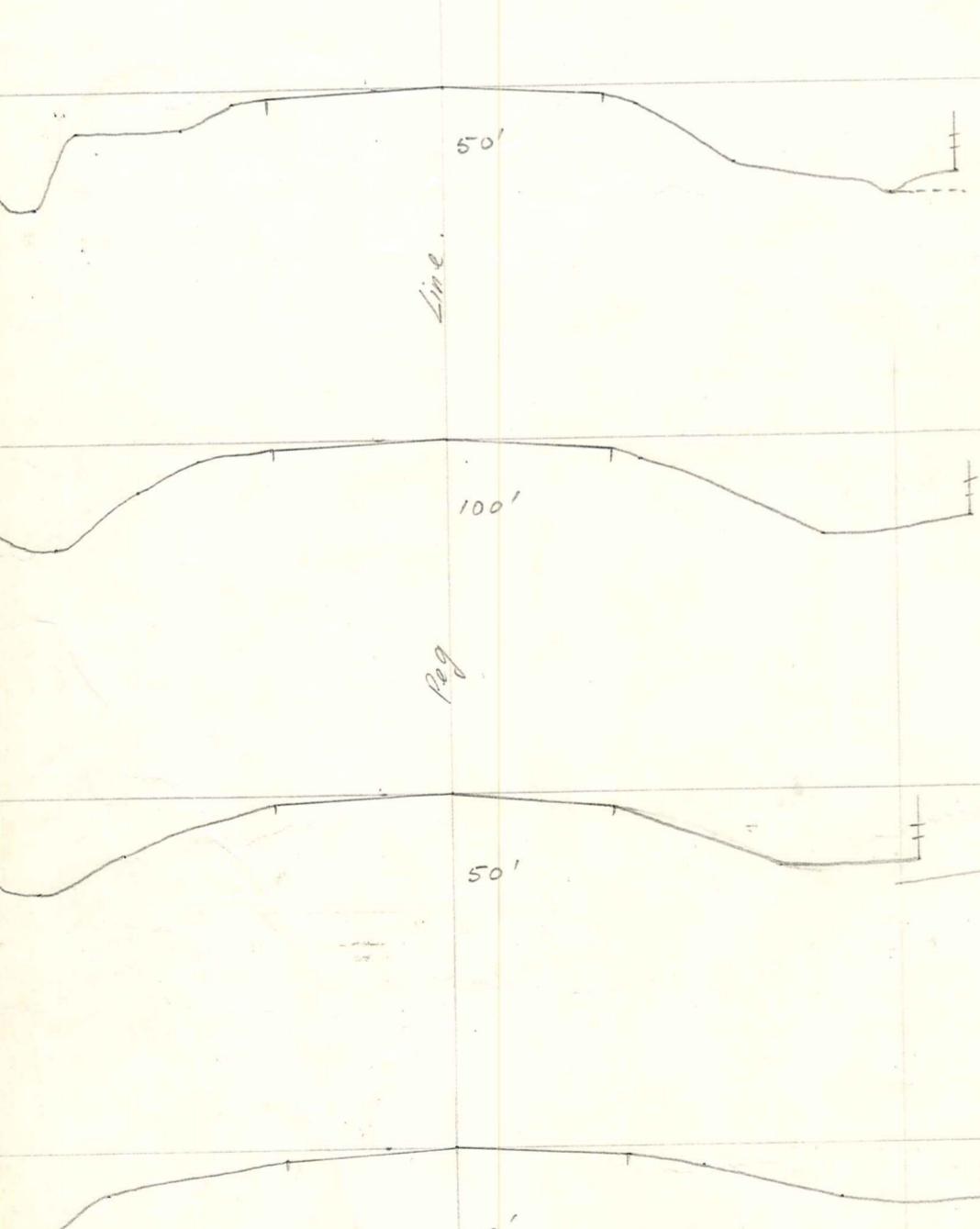
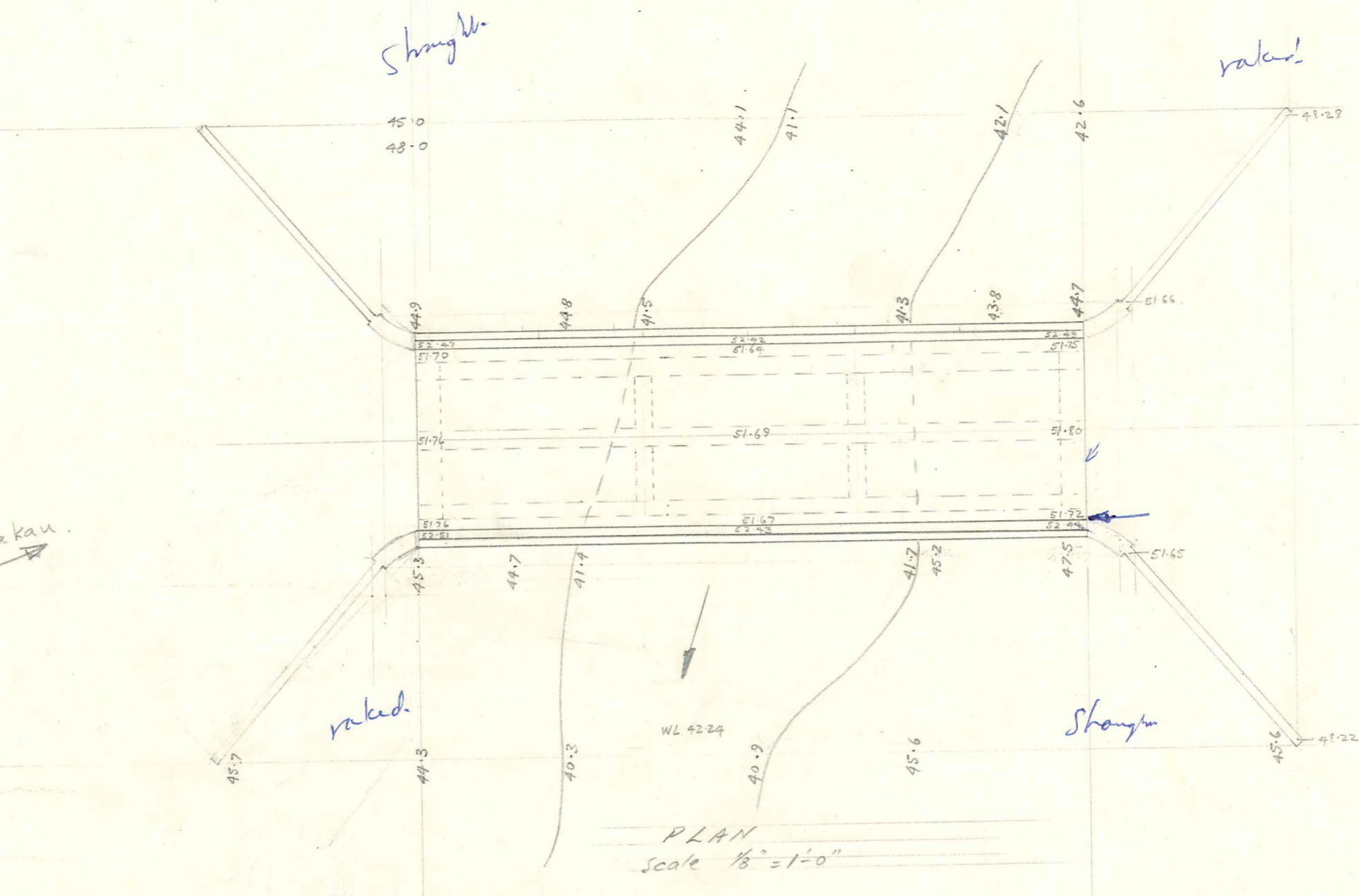


PLAN
Scale 1" = 50'

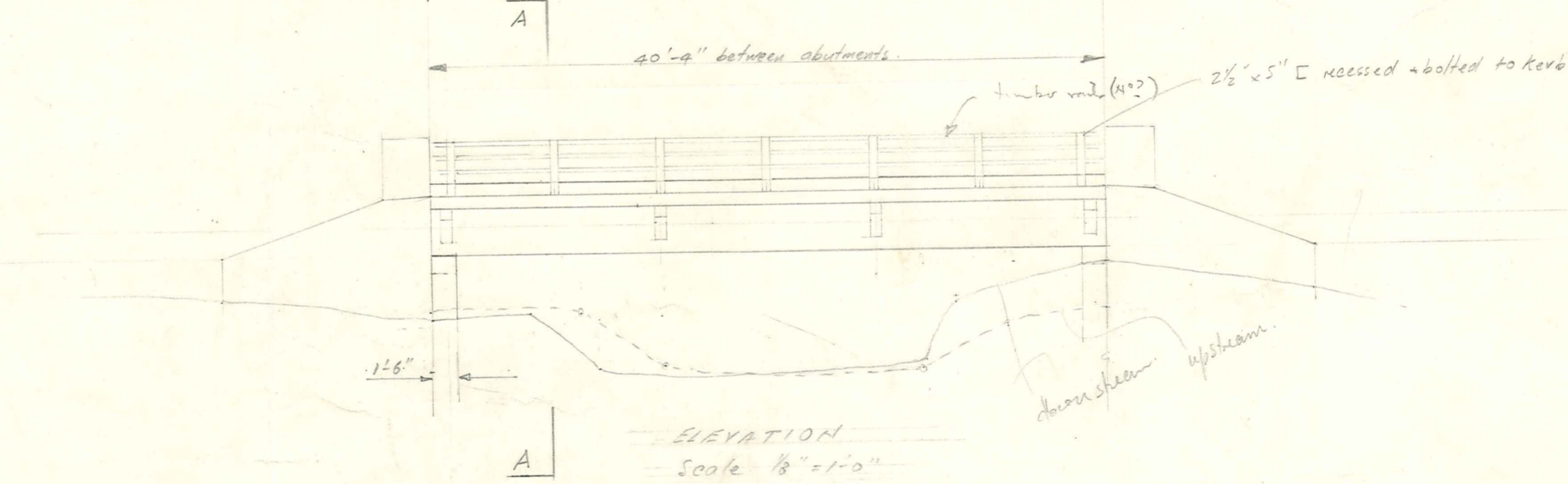


X SECTIONS	1% LEVEL	50.00 0'	50.75 50'	51.68 100'	51.76 150'	51.85 0'	51.9 50'	51.95 100'	52.00 150'
------------	----------	----------	-----------	------------	------------	----------	----------	------------	------------

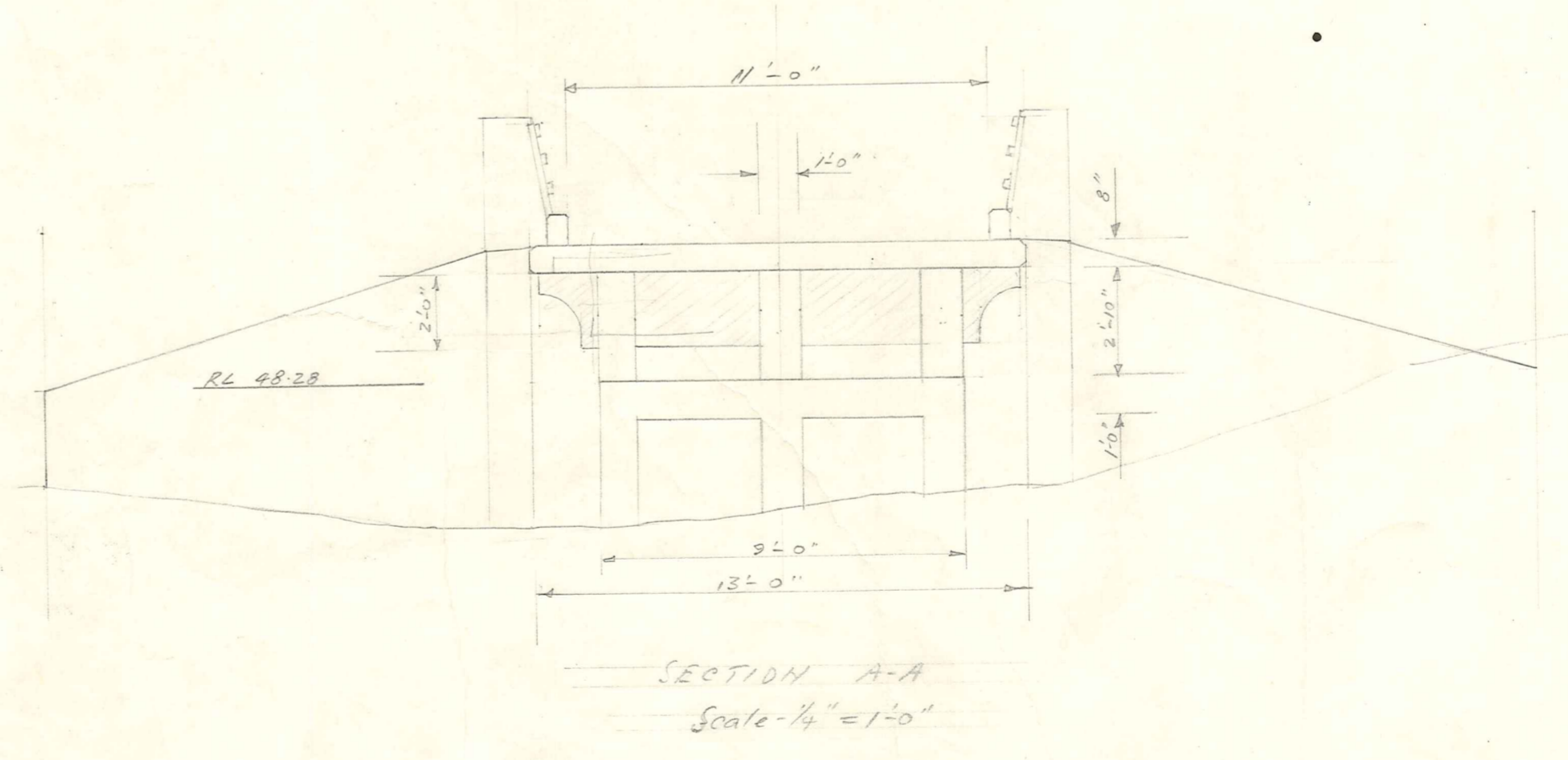
ZONBSECTION
Scales: Horiz = 1" = 50'
Vert = 1" = 5'



PLAN
Scale 1/8" = 1'-0"



ELEVATION
Scale 1/8" = 1'-0"



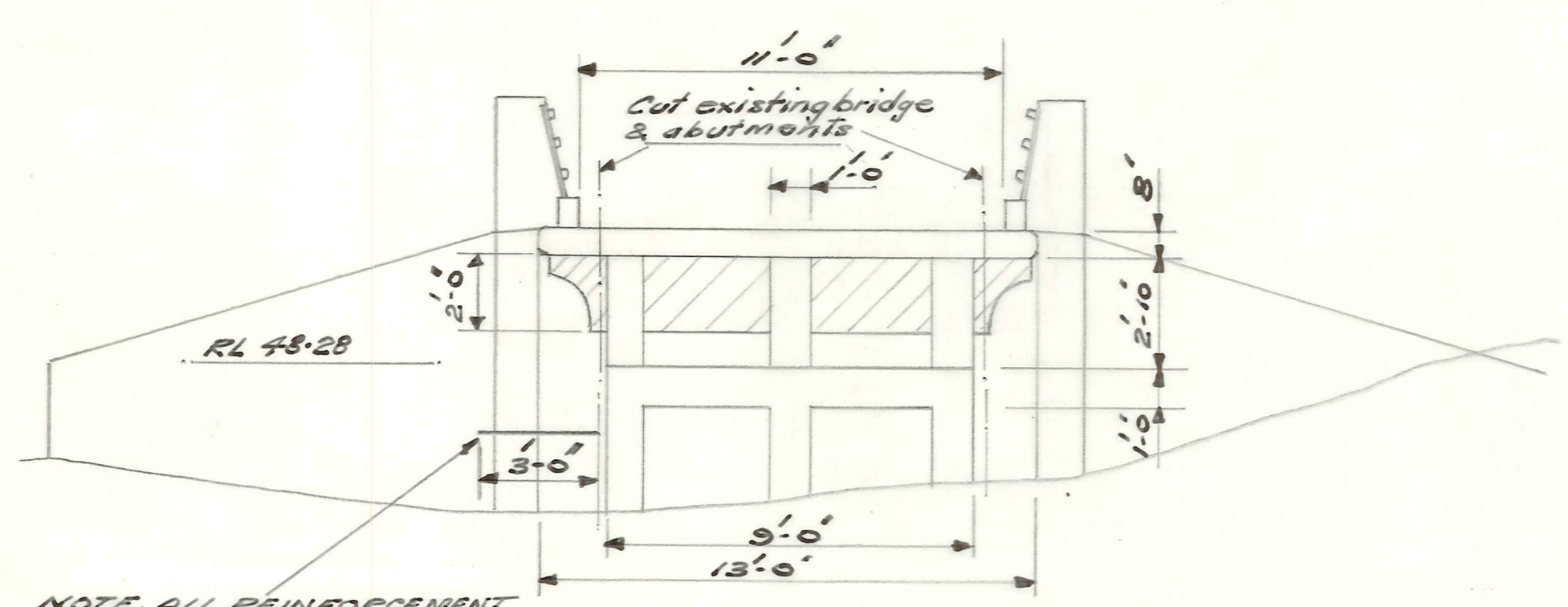
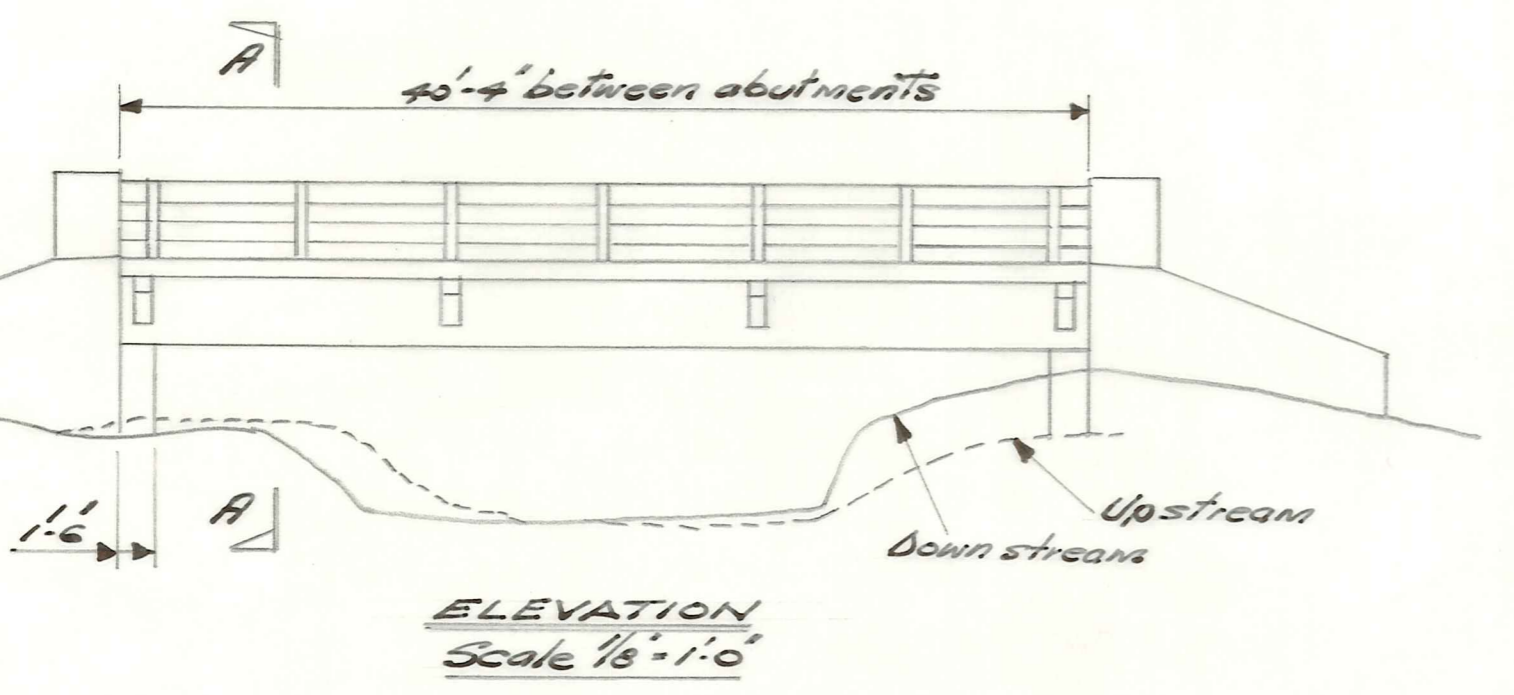
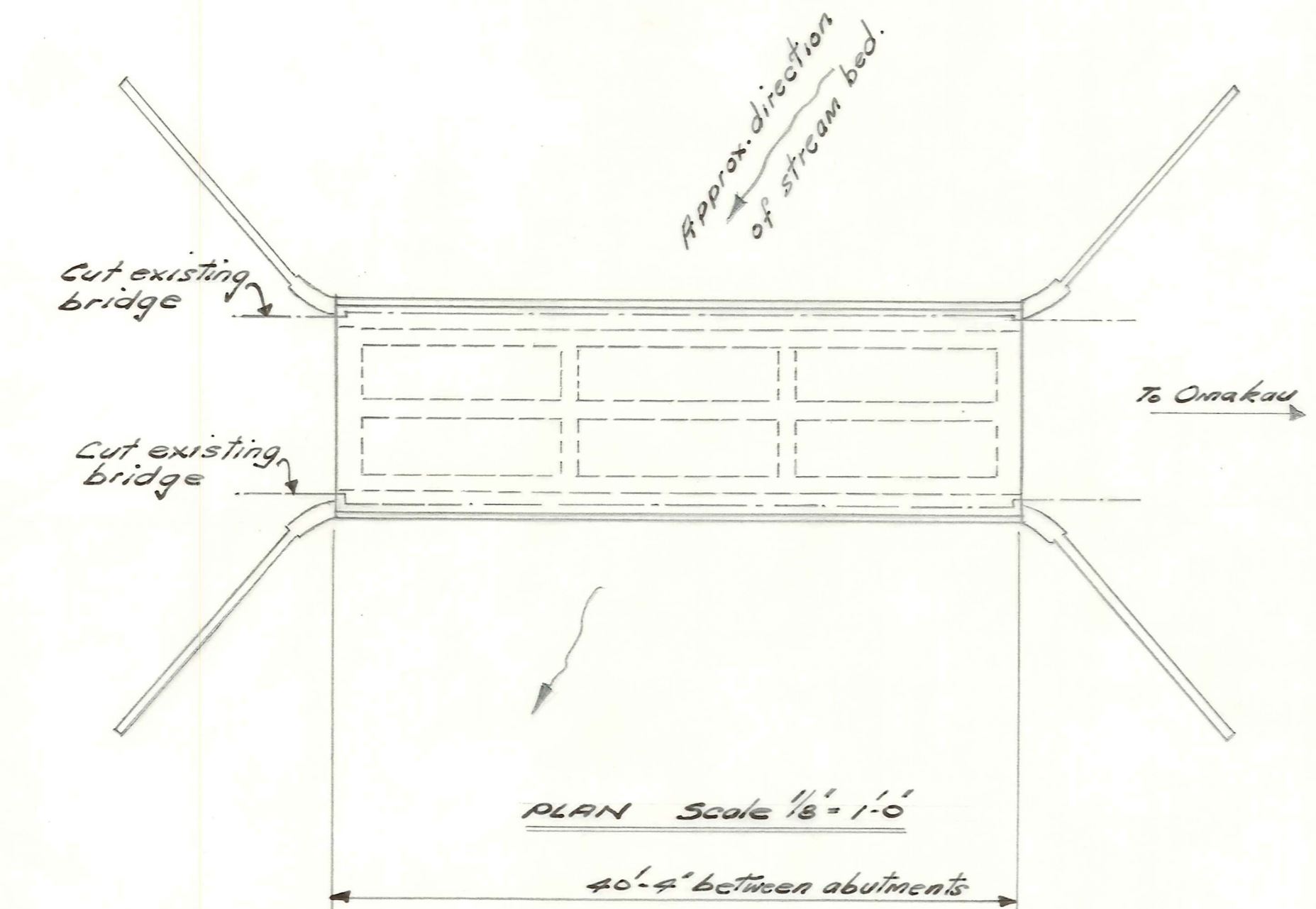
SECTION A-A
Scale 1/4" = 1'-0"

POOLBURN BRIDGE.

OFFICE COPY

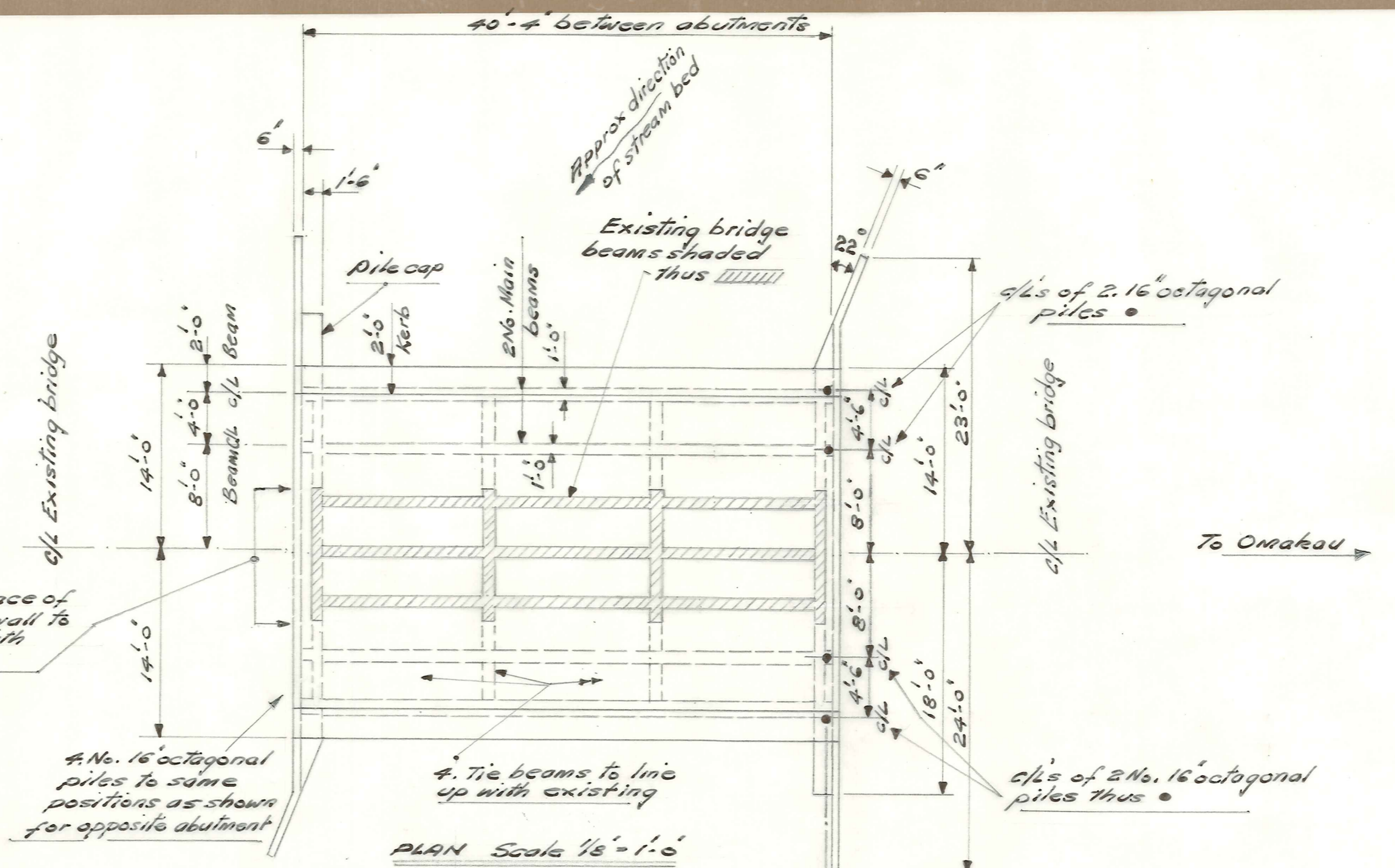
V.C.C.

4659.
FB 217 June 66.



NOTE. ALL REINFORCEMENT IN EXISTING BRIDGE TO BE EXPOSED AND TO PROJECT 3'-0" MIN. FROM FACE OF CUT. OPPOSITE SIDE OF BRIDGE SIMILAR.

EXISTING BRIDGE

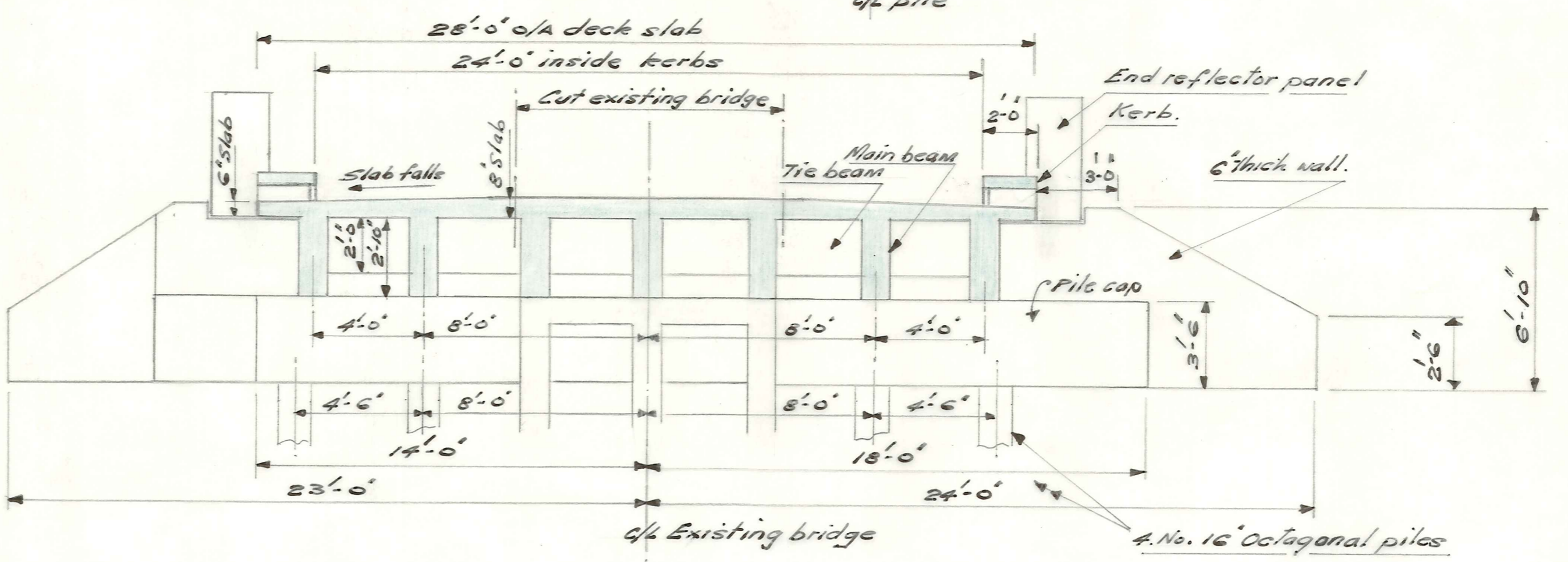
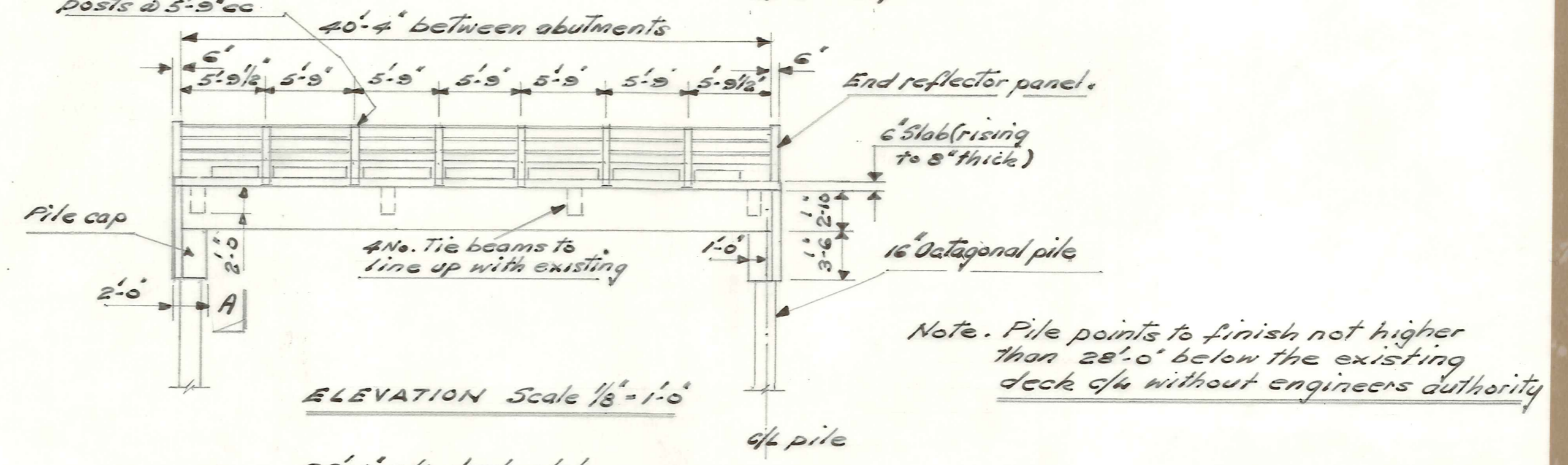


Back face of abutment wall to match up with existing.

4 No. 16" octagonal piles to same positions as shown for opposite abutment

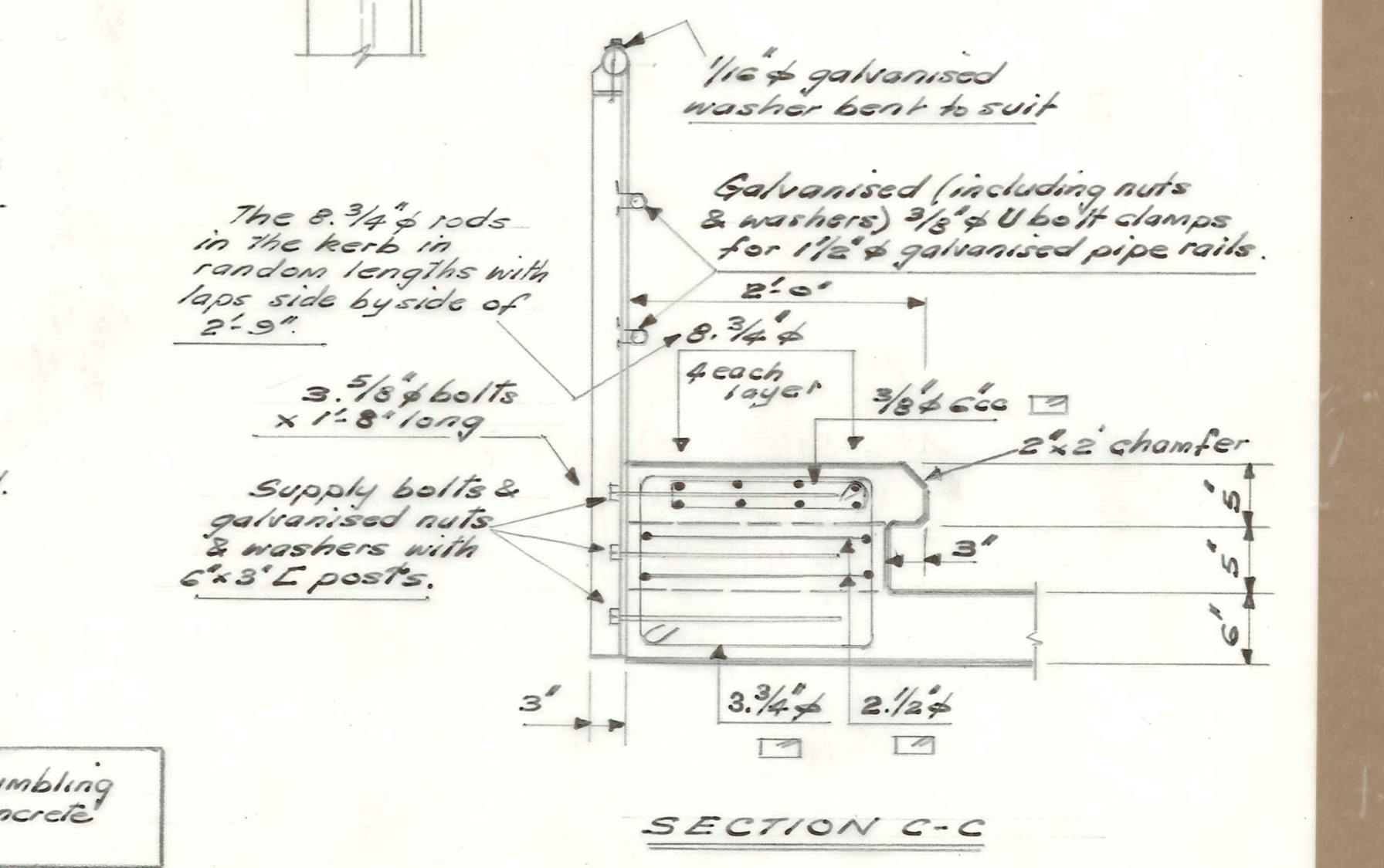
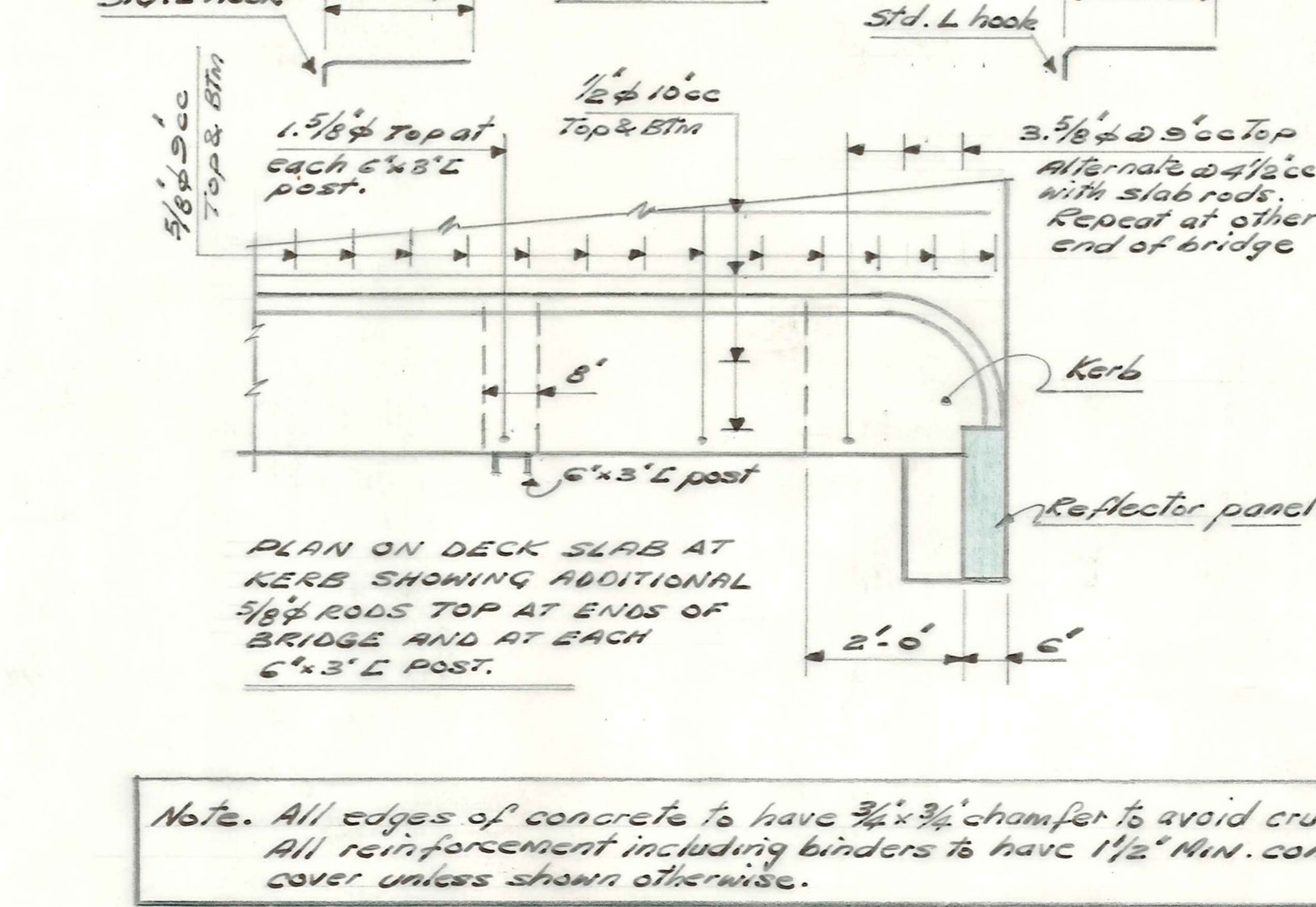
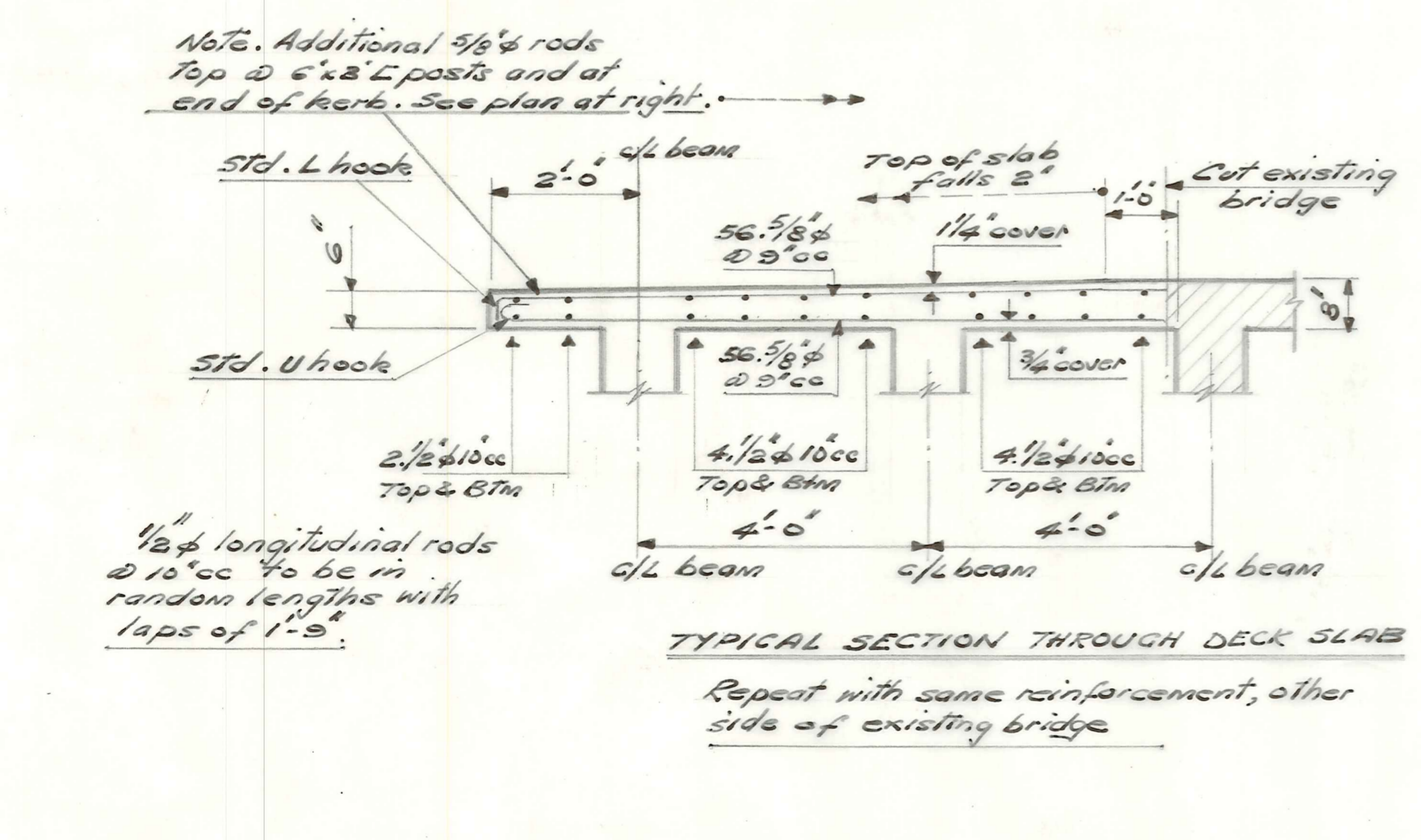
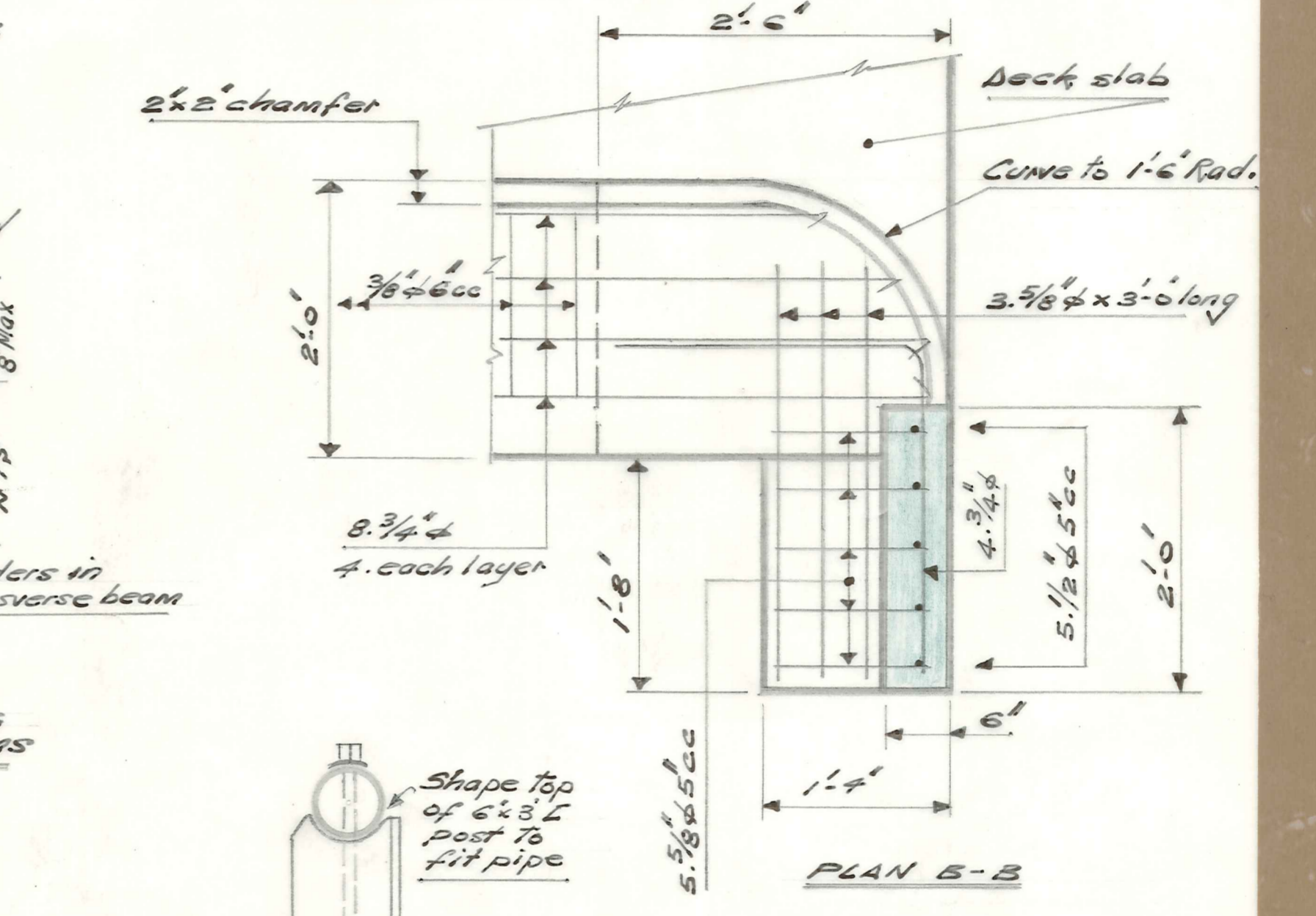
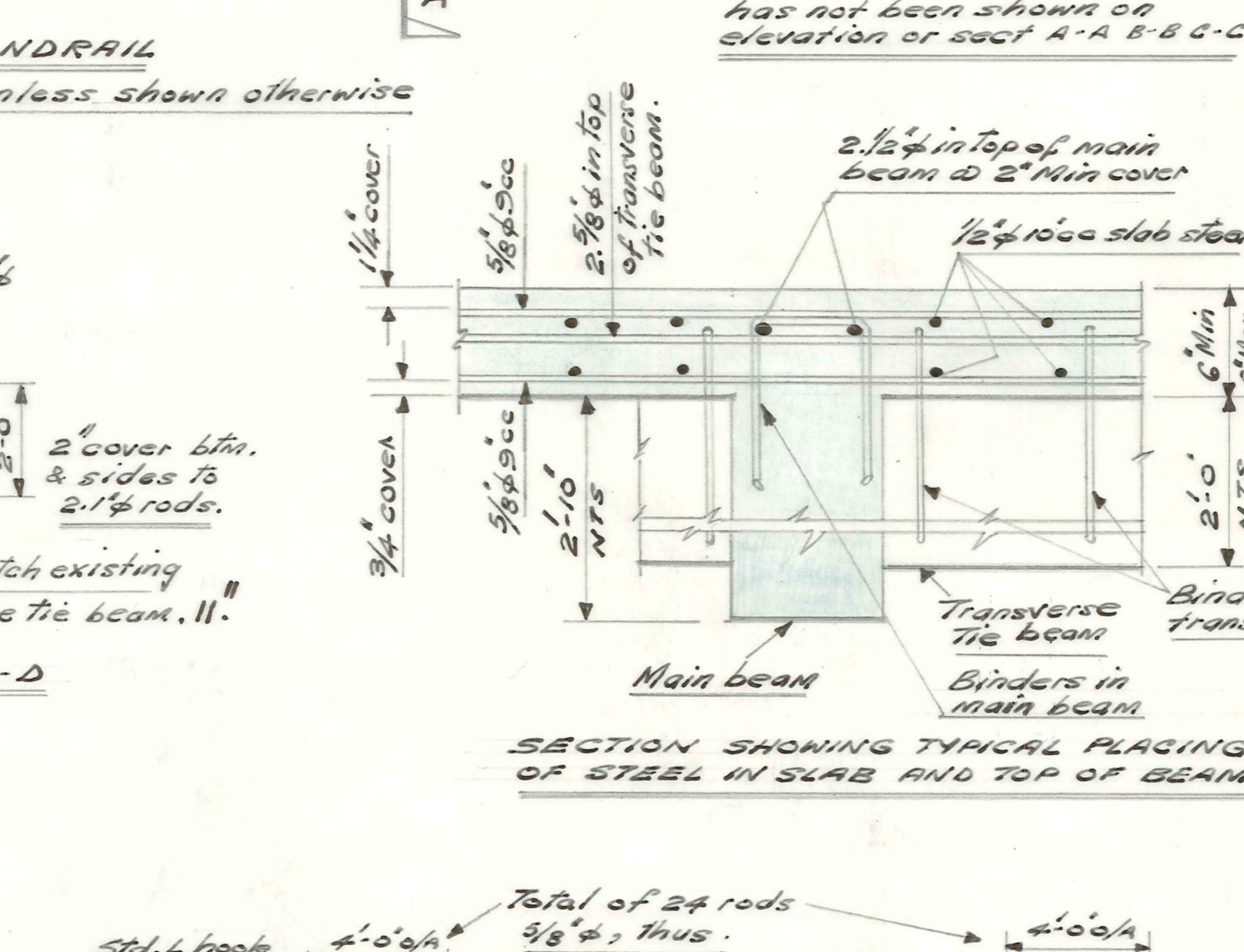
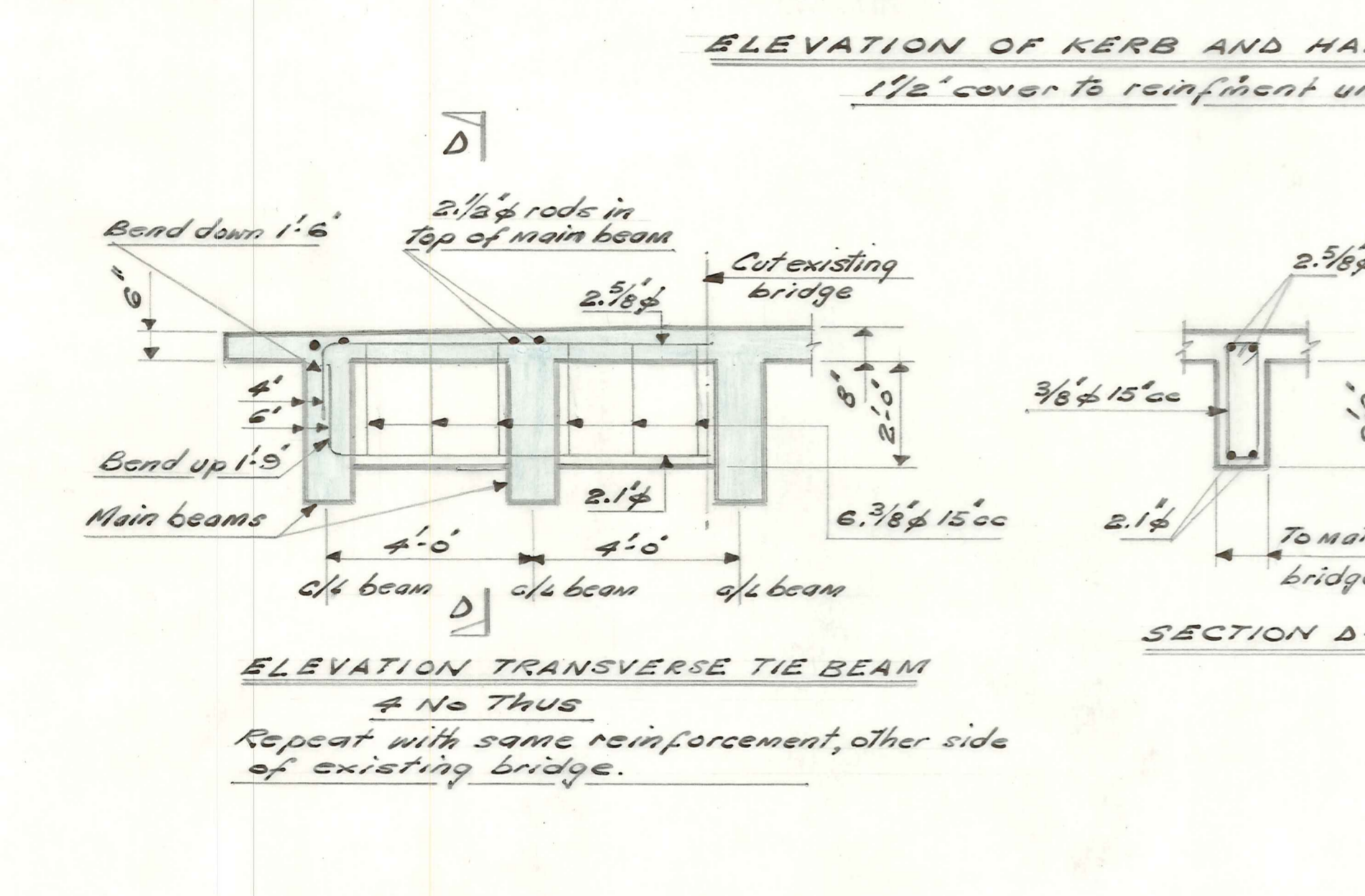
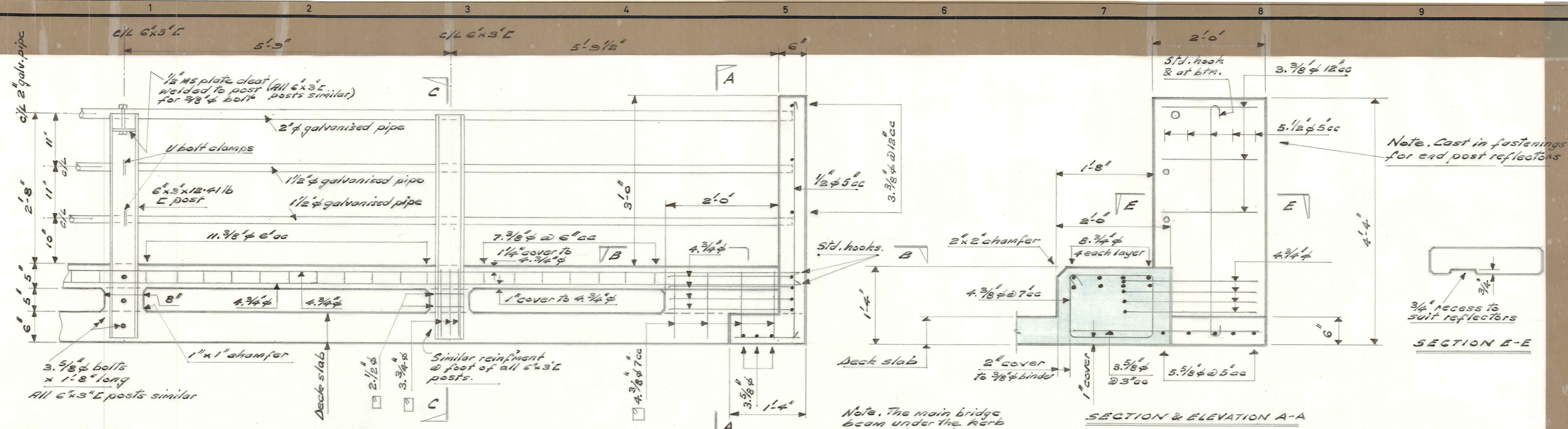
4 Tie beams to line up with existing

6 No. 6x8x12 #16 L posts @ 5'-9" cc



RECONSTRUCTED BRIDGE

AMENDMENTS					NAME	DATE
No.	By	Date	Description	Apprd	Surveyed	
					Drawn	9.5.67
					Calculations	
					Traced	
					Checked	
					Approved	



Note. All edges of concrete to have 3/4" x 3/4" chamfer to avoid crumbling
 All reinforcement including binders to have 1 1/2" min. concrete cover unless shown otherwise.

AMENDMENTS						NAME	DATE
No.	By	Date	Description	Apprd.	Surveyed		
					Drawn	DN	8.5.67
					Calculations	FM	
					Traced		
					Checked		
					Approved		