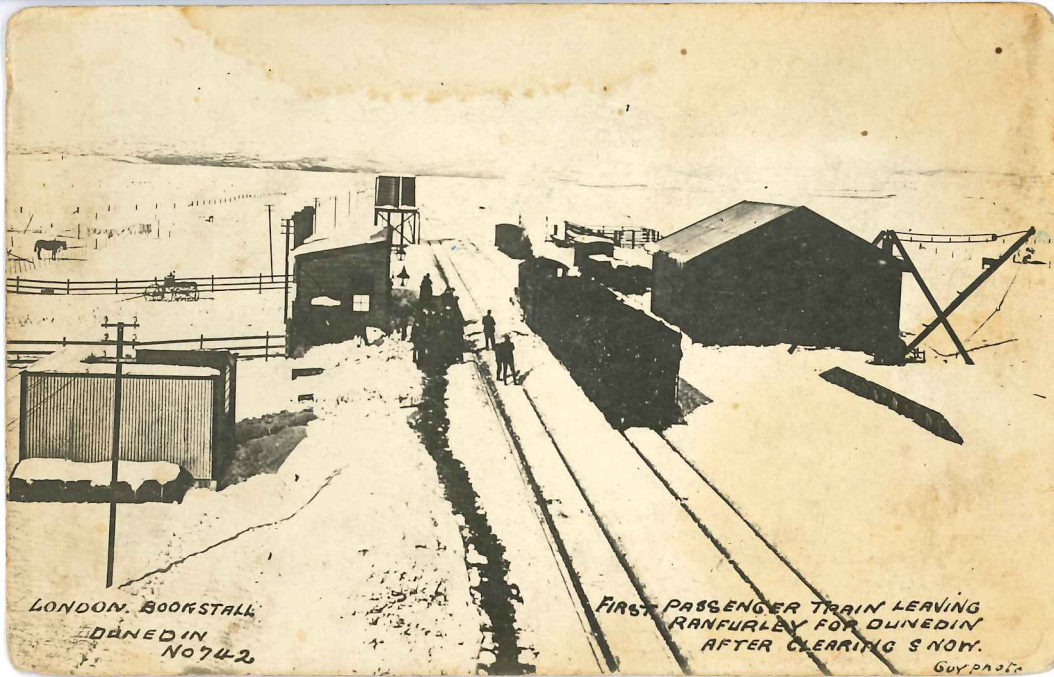




Pringles garage, side view and front view. (n.d)



Bell & Pringle Motor General Engineers. (n.d.)



LONDON BOOKSTALL  
DUNEDIN  
No 742

FIRST PASSENGER TRAIN LEAVING  
RANFURLEY FOR DUNEDIN  
AFTER CLEARING SNOW.  
GUY PAUL

Handwritten on the back of this post card is the date 1898.



*Seasons Greetings R.S. Pringle*

R.S. Pringle, Ford dealer. (n.d.)



Ranfurly railway station. (n.d.)

