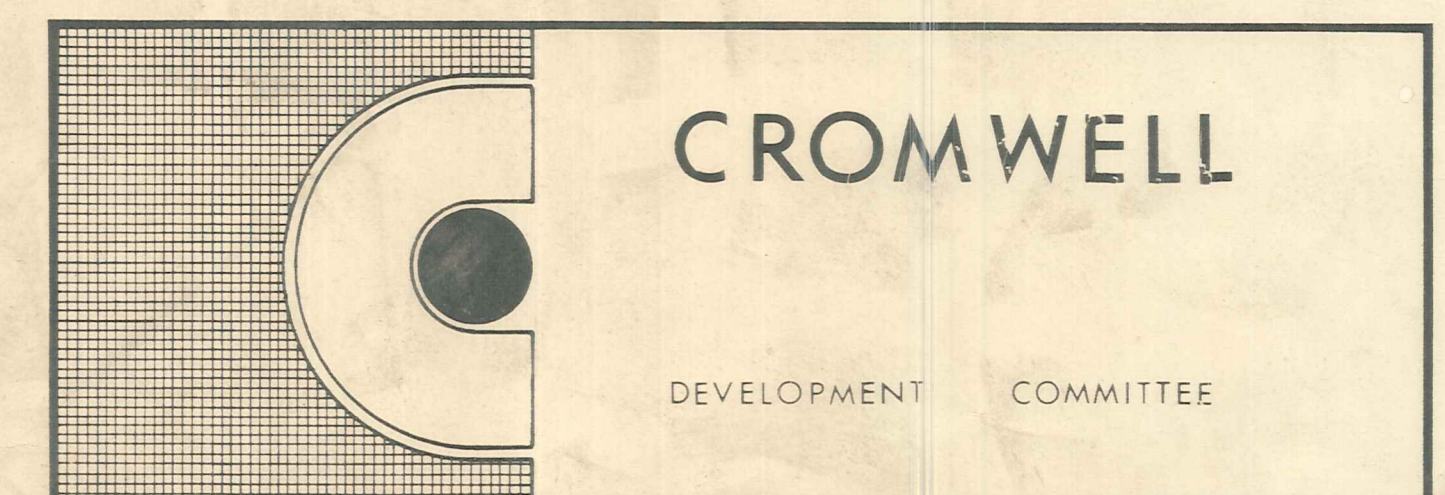
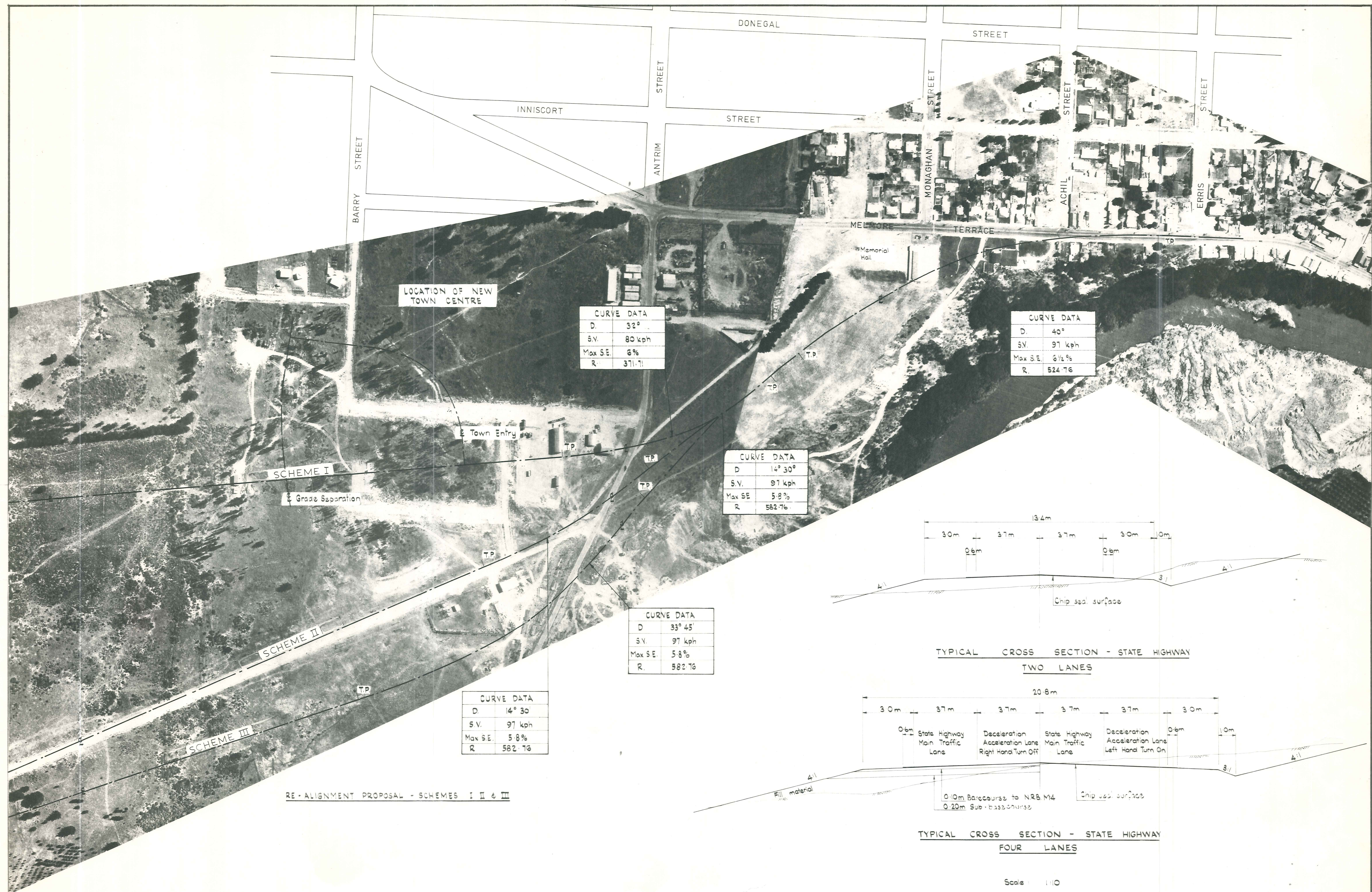


RE - ALIGNMENT OF
STATE HIGHWAY 8



200
150
100
50
30
10
0
mm
INCHES
ORIGINAL SIZE



LOCATION OF NEW TOWN CENTRE

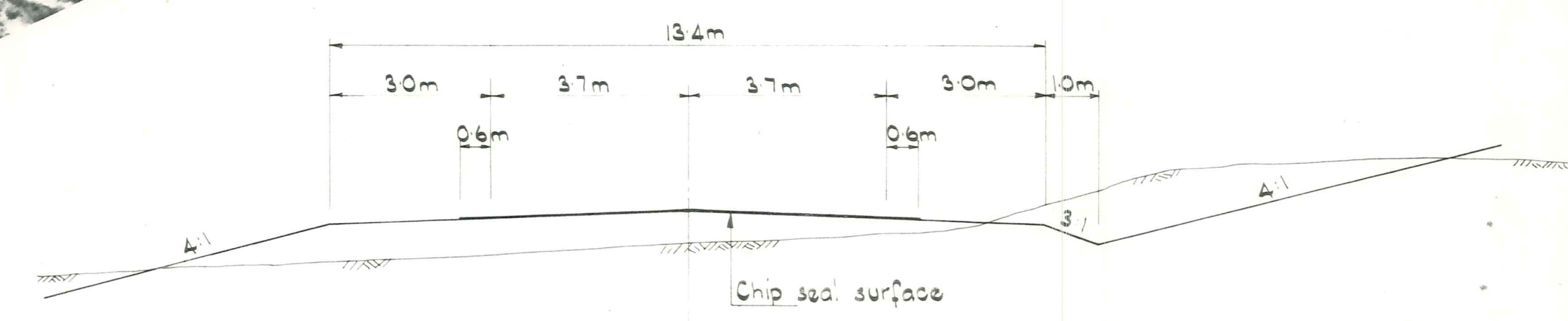
CURVE DATA	
D.	32°
S.V.	80 kph
Max SE	6%
R.	371.71

CURVE DATA	
D.	40°
S.V.	97 kph
Max SE	6 1/2 %
R.	524.76

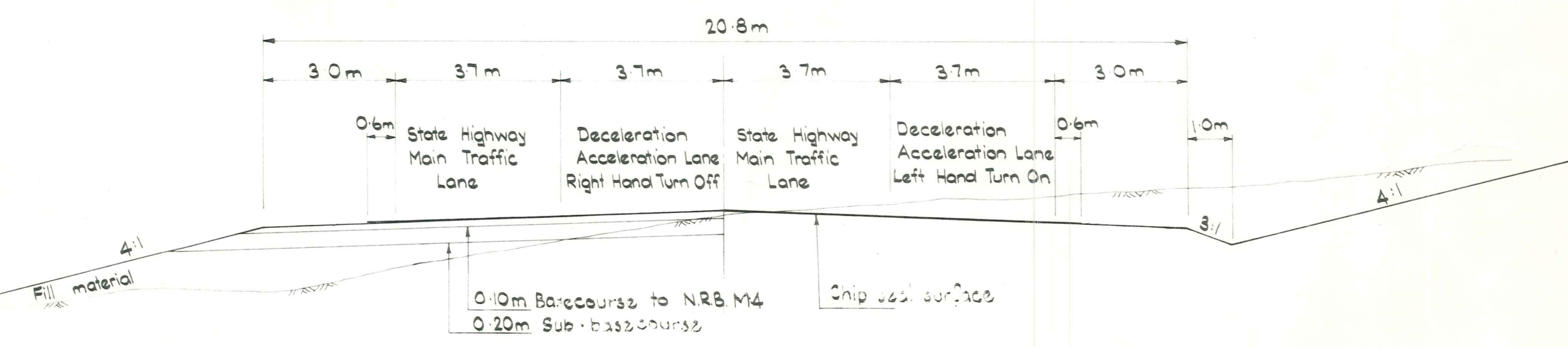
CURVE DATA	
D.	14° 30'
S.V.	97 kph
Max SE	5.8%
R.	582.76

CURVE DATA	
D.	33° 45'
S.V.	97 kph
Max SE	5.8%
R.	582.76

CURVE DATA	
D.	14° 30'
S.V.	97 kph
Max SE	5.8%
R.	582.76



TYPICAL CROSS SECTION - STATE HIGHWAY
TWO LANES



TYPICAL CROSS SECTION - STATE HIGHWAY
FOUR LANES

Scale: 1:10

RE-ALIGNMENT PROPOSAL - SCHEMES I II & III

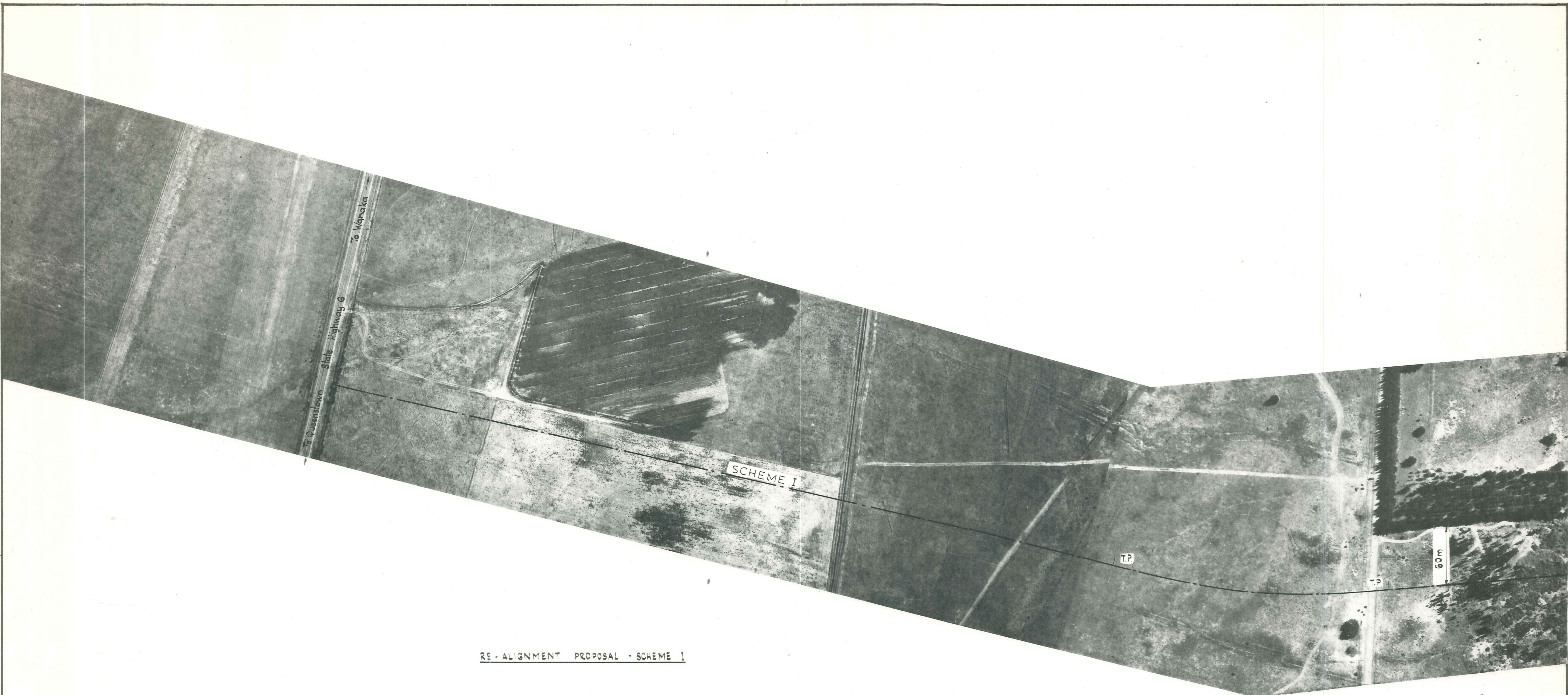
CROMWELL
DEVELOPMENT COMMITTEE

DUFFILL WATTS & KING LTD.
CONSULTING CIVIL & STRUCTURAL ENGINEERS
DUNEDIN INVERCARGILL BALCLUTHA

TITLE		RE-ALIGNMENT OF STATE HIGHWAY 8	SCALES	JOB NO
DRAWN		G.R. Gillespie	1:10	SG2/100
CHECKED		A.H. Sim	1:2000	SHEET NO
APPROVED		[Signature]	FILE	1
		June 15	64/3	of 8 sheets
		2/7/75	8199	

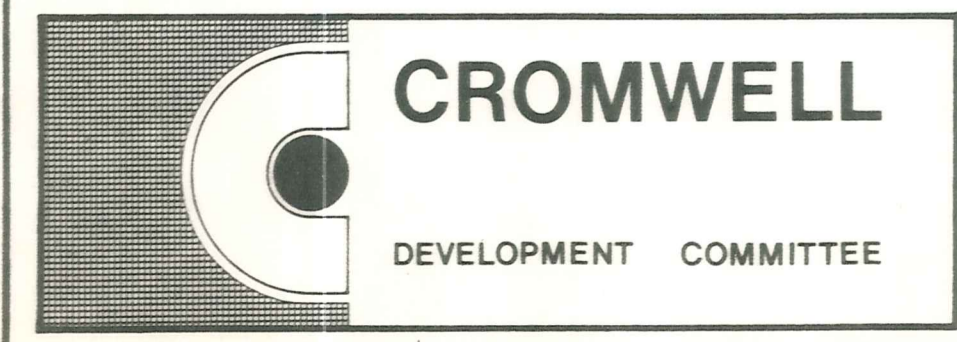
ORIGINAL SIZE mm INCHES

0 10 20 30 40 50 60 70 80 90 100 110 120 130 140 150 160 170 180 190 200



RE - ALIGNMENT PROPOSAL - SCHEME 1

CURVE DATA	
D.	19° 30'
S.V.	97 kph
Max SE.	5.8 %
R	582.76

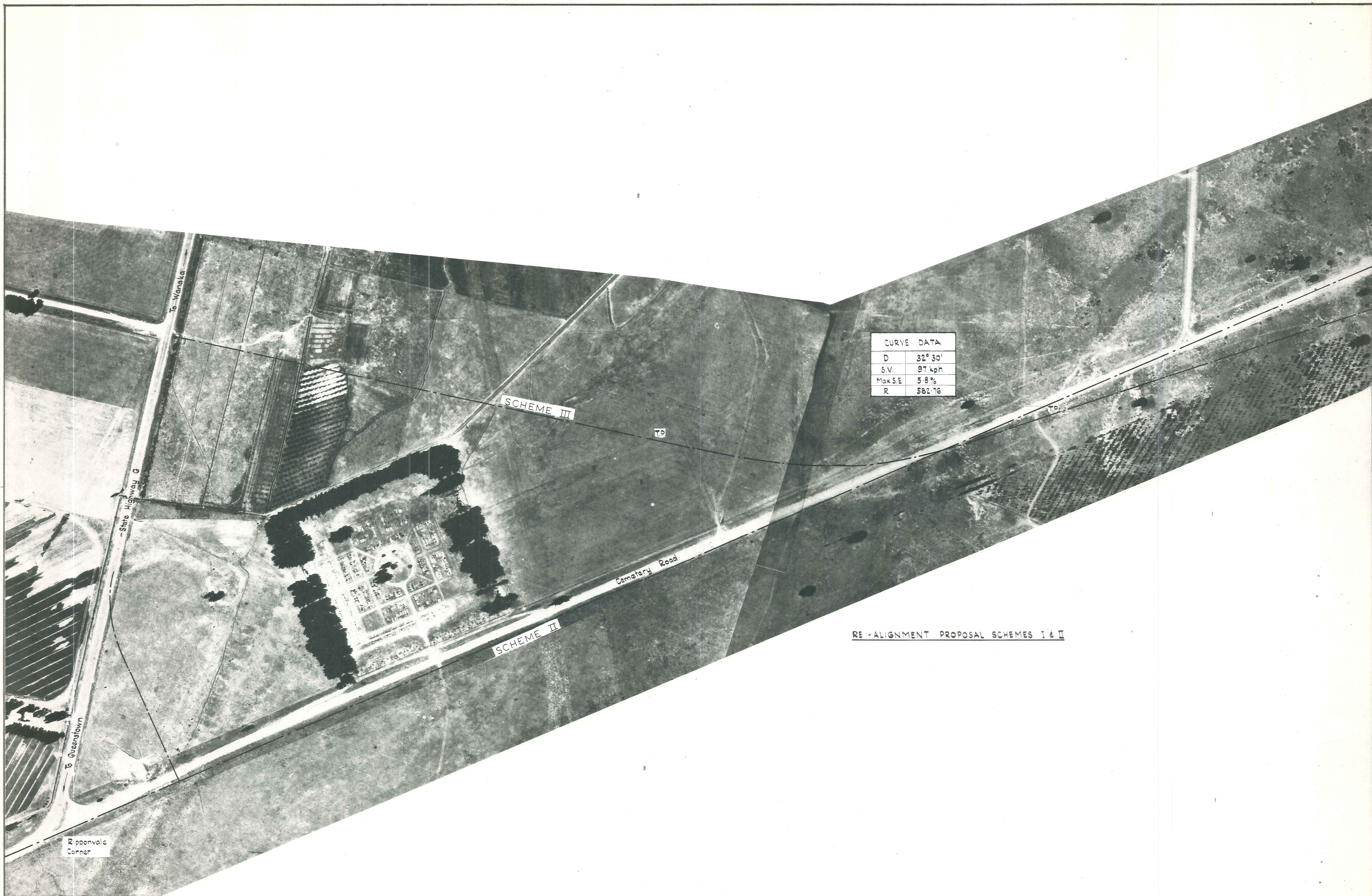


metric drawing

OFFICE
DUFFILL WATTS & KING LTD.
 CONSULTING CIVIL & STRUCTURAL ENGINEERS
 DUNEDIN INVERCARGILL BALCLUTHA
 CROMWELL

TITLE		SCALES	JOB N ^o
RE-ALIGNMENT OF STATE HIGHWAY 8		1:2000	SG2/100
DRAWN	G.R. Gillespie	June '75	FILE
TRACED	A.H. Sim		64/3
CHECKED		4/7/75	2
APPROVED			8199 of 8 sheets

200
150
100
50
30
0
0 1 2 3 4 5 6 7 8
mm INCHES
ORIGINAL SIZE



CURVE DATA	
D	32° 30'
S.V.	97 kph
Max SE	5.8%
R	582.76

RE-ALIGNMENT PROPOSAL SCHEMES I & II

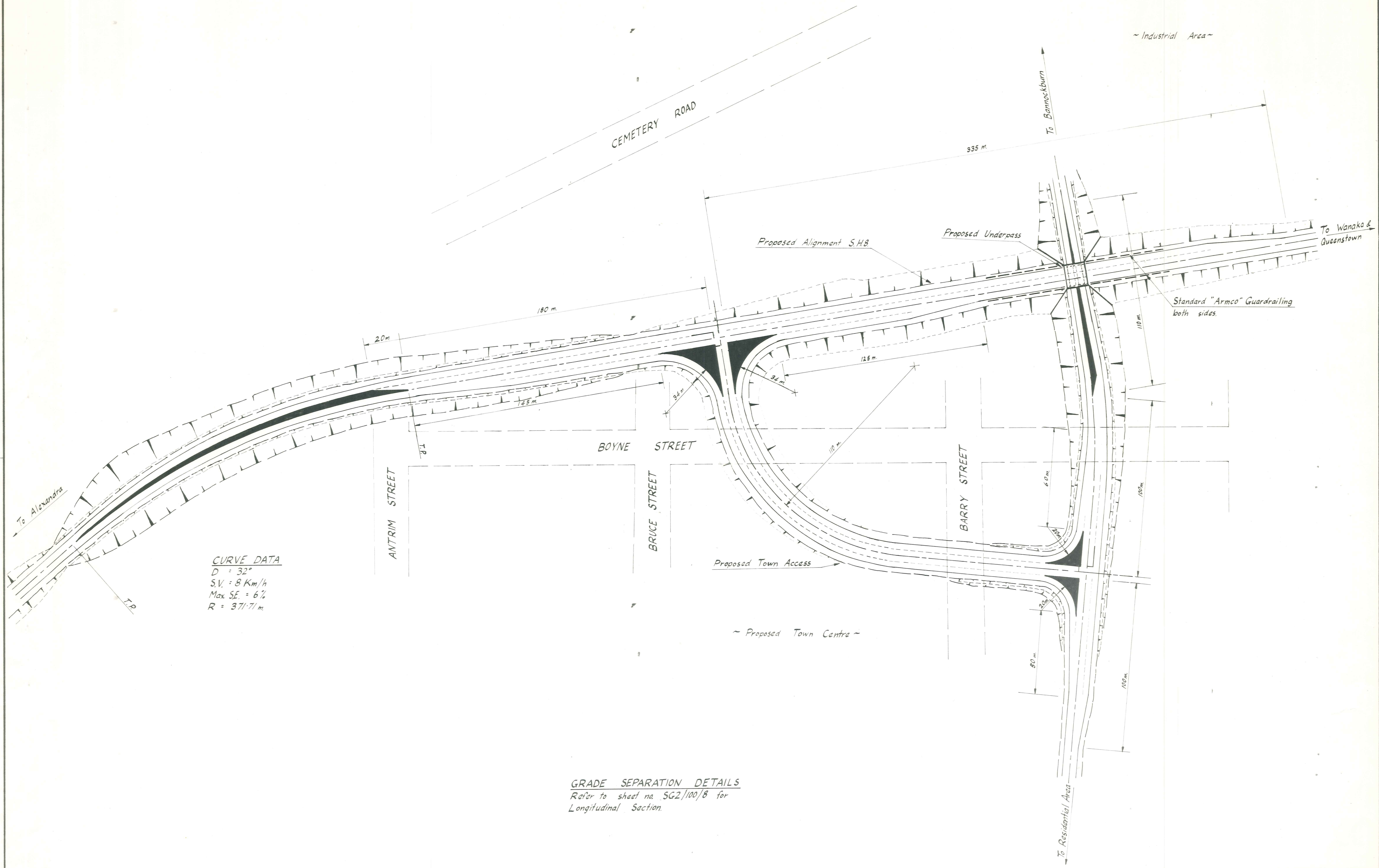
CROMWELL
DEVELOPMENT COMMITTEE



OFFICE
DUFFILL WATTS & KING LTD.
CONSULTING CIVIL & STRUCTURAL ENGINEERS
DUNEDIN INVERCARGILL BALCLUTHA
CROMWELL

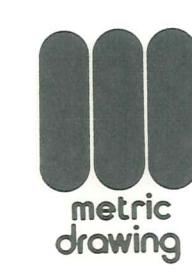
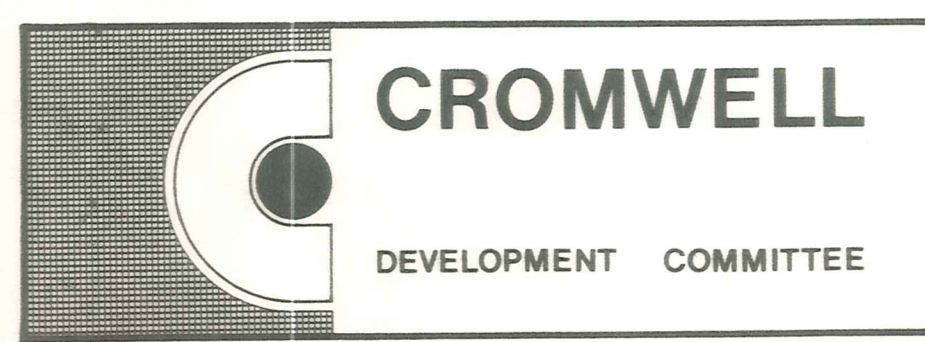
TITLE		SCALES	JOB NO
RE-ALIGNMENT OF STATE HIGHWAY 8		1:2000	SG2/100
DRAWN	G.R. Gillespie	June '75	FILE
TRACED	A.H. Sim	" "	64/3
CHECKED	Quach	27/75	8199
APPROVED			
			SHEET NO 3 of 8 sheets

200
150
100
50
0
mm
INCHES
ORIGINAL SIZE



CURVE DATA
 D = 32°
 S.V. = 8 Km/h
 Max SE. = 6%
 R = 371.71 m

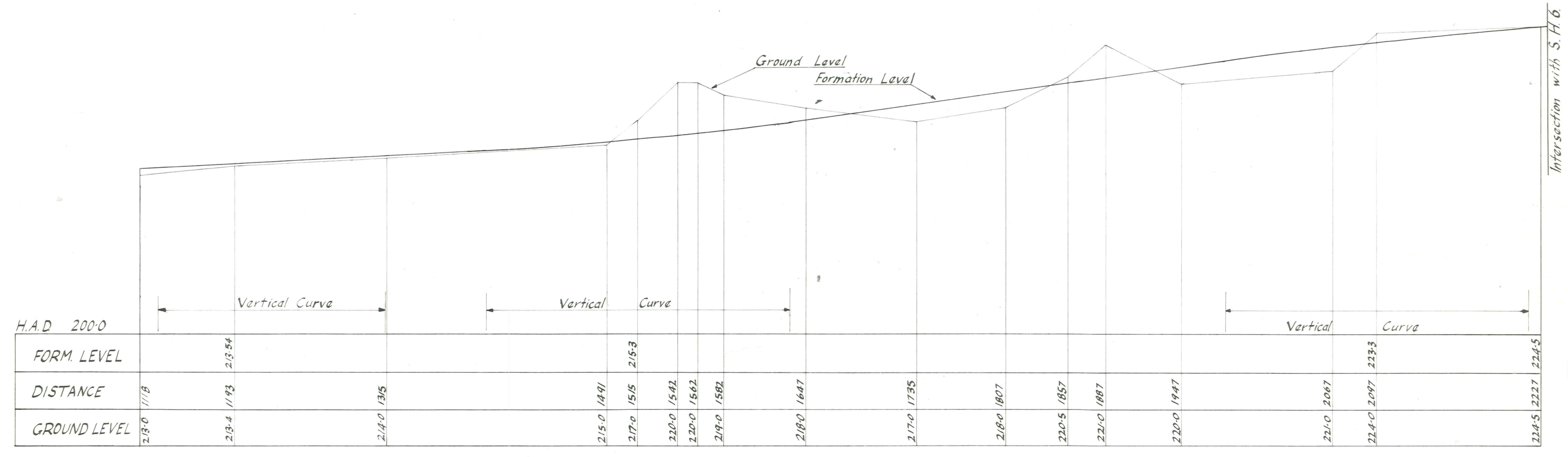
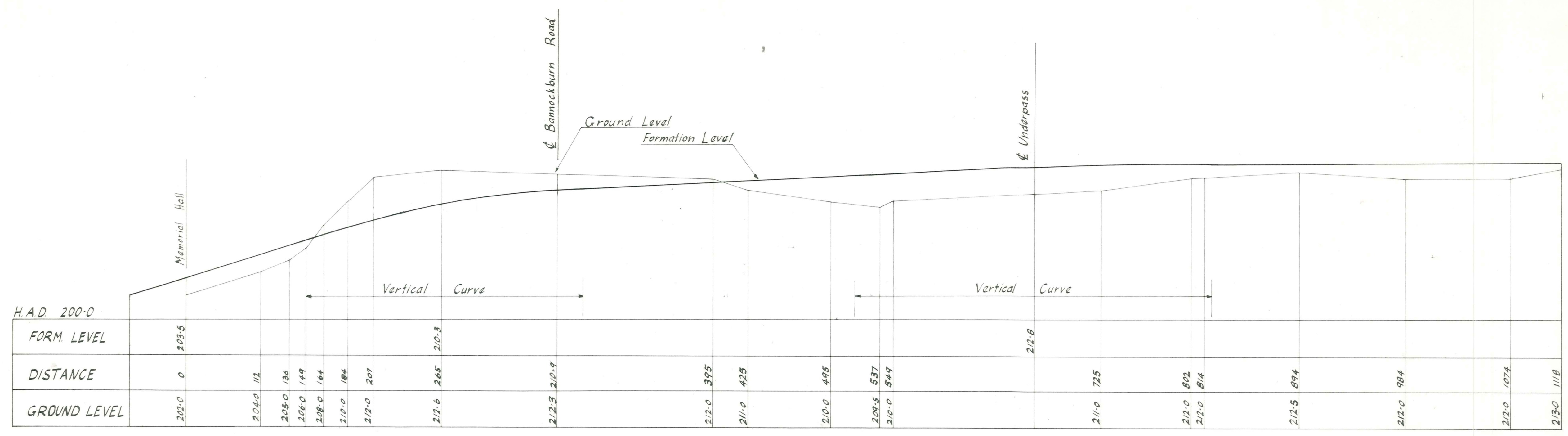
GRADE SEPARATION DETAILS
 Refer to sheet no SG2/100/8 for
 Longitudinal Section.



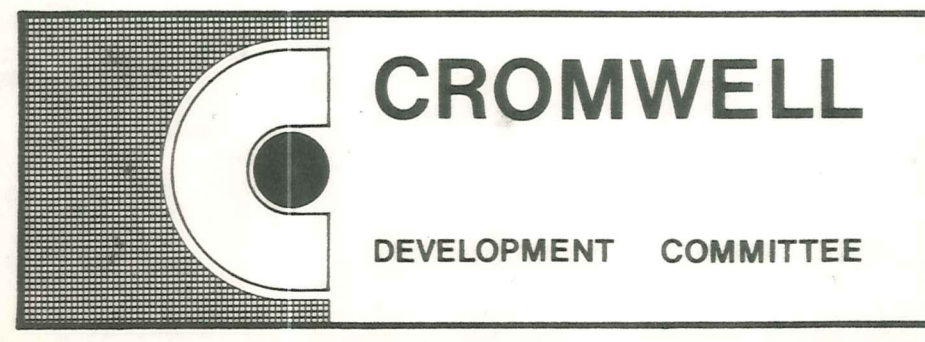
OFFICE
DUFFILL WATTS & KING LTD.
 CONSULTING CIVIL & STRUCTURAL ENGINEERS
 DUNEDIN INVERCARGILL BALCLUTHA
 CROMWELL

TITLE		RE-ALIGNMENT OF STATE HIGHWAY 8	SCALES	1:1000	JOB NO	SG2/100
DRAWN	G.R.G.	June '75	FILE	64/3	SHEET NO	4
TRACED	B.T.K.	" "	" "	" "		
CHECKED	Q.G.	3/7/75		8199		
APPROVED						of 8 sheets

ORIGINAL SIZE
 mm INCHES
 0 1 2 3 4 5 6 7 8
 0 30 50 100 150 200



LONGITUDINAL SECTIONS
 SCHEME I
 Scales: Horiz. 1:2000
 Vert. 1:200

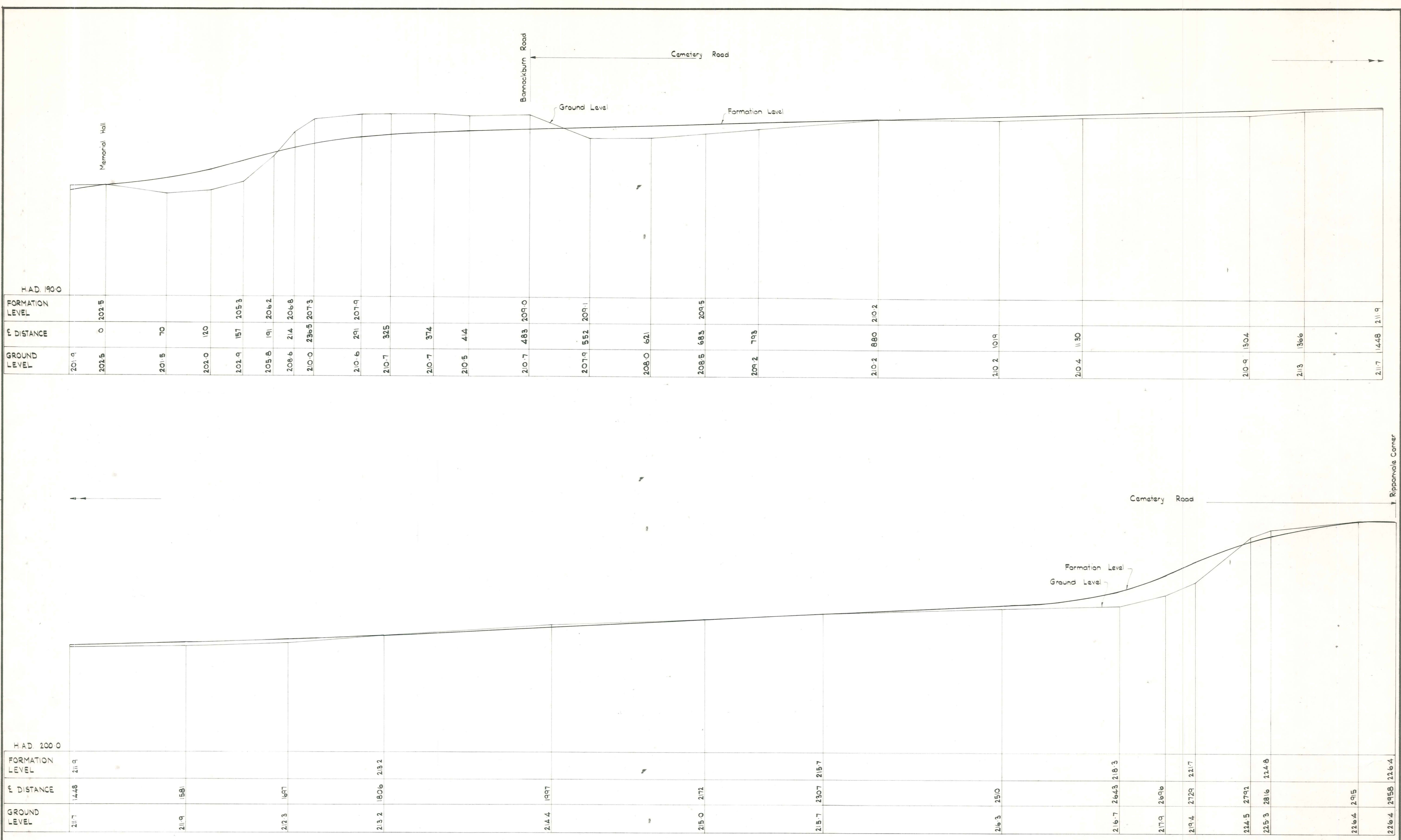


metric drawing

OFFICE
DUFFILL WATTS & KING LTD.
 CONSULTING CIVIL & STRUCTURAL ENGINEERS
 DUNEDIN INVERCARGILL BALCLUTHA CROMWELL

TITLE RE - ALIGNMENT OF STATE HIGHWAY 8		SCALES 1:2000 1:200	JOB NO SG2/100
DRAWN BT Kingston	FILE 64/3	DATE June '75	SHEET NO 5
TRACED BT Kingston	DATE 2/7/75	FILE 8199	of 8 sheets
CHECKED Duffell			
APPROVED			

ORIGINAL SIZE
mm INCHES



LONGITUDINAL SECTION - SCHEME II

Scales: Horizontal: 1: 2000
Vertical: 1: 200



OFFICE
DUFFILL WATTS & KING LTD.
CONSULTING CIVIL & STRUCTURAL ENGINEERS
DUNEDIN INVERCARGILL BALCLUTHA
CROMWELL

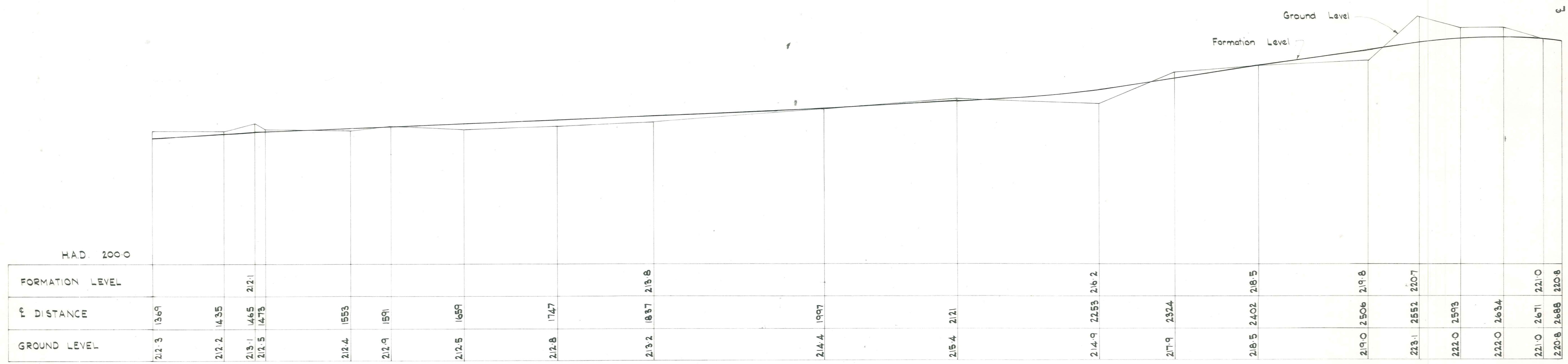
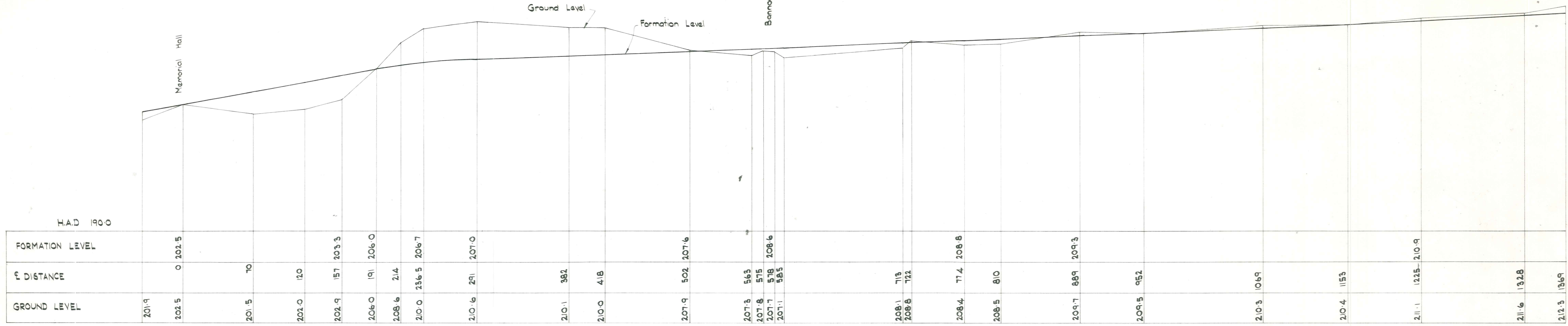
TITLE RE-ALIGNMENT OF STATE HIGHWAY 8		SCALES 1: 2000 1: 200	JOB No SG2/100
DRAWN B.T. Kingston	JUNE '75	FILE 64/3	SHEET No 6
TRACED J.E.M.	JUNE '75		
CHECKED <i>[Signature]</i>	21.7.75	8199	of 8 sheets
APPROVED			

T. Ripponvale Corner

200
150
100
50
30
0
1
2
3
4
5
6
7
8

mm
INCHES

ORIGINAL SIZE



LONGITUDINAL SECTION - SCHEME III

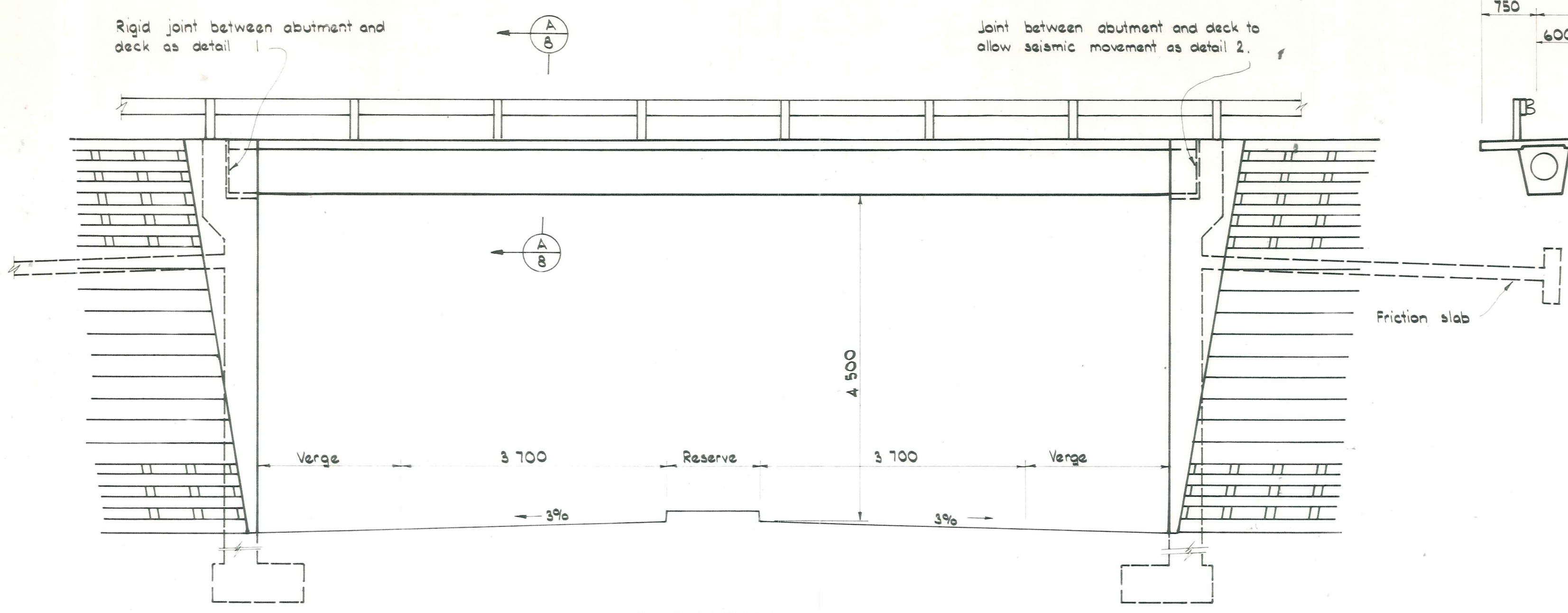
Scales: Horizontal : 1:2000
Vertical : 1:200



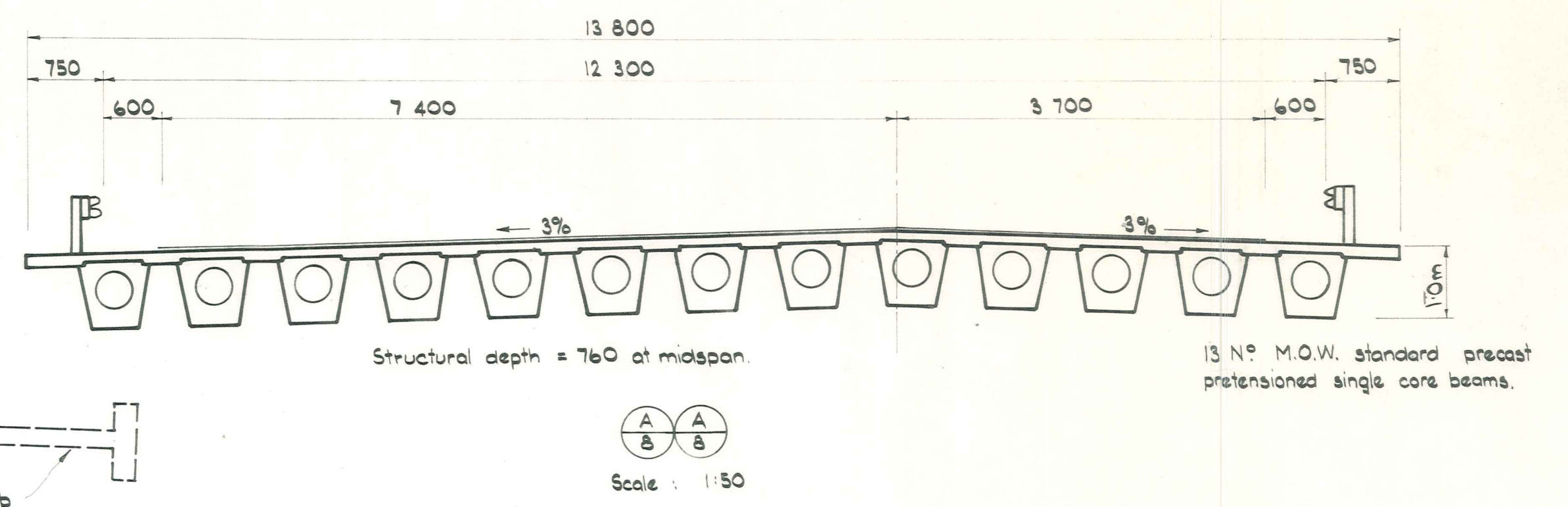
OFFICE
DUFFILL WATTS & KING LTD.
CONSULTING CIVIL & STRUCTURAL ENGINEERS
DUNEDIN INVERCARGILL BALCLUTHA
CROMWELL

TITLE		RE-ALIGNMENT OF STATE HIGHWAY 8	SCALES	JOB No
DRAWN		B.T. Kingston	1:2000	SG2/100
TRACED		J.E.M.	1:200	SHEET No
CHECKED		W.A.S.	FILE	7
APPROVED		2/1/75	64/3	8199
			8199	of 8 sheets

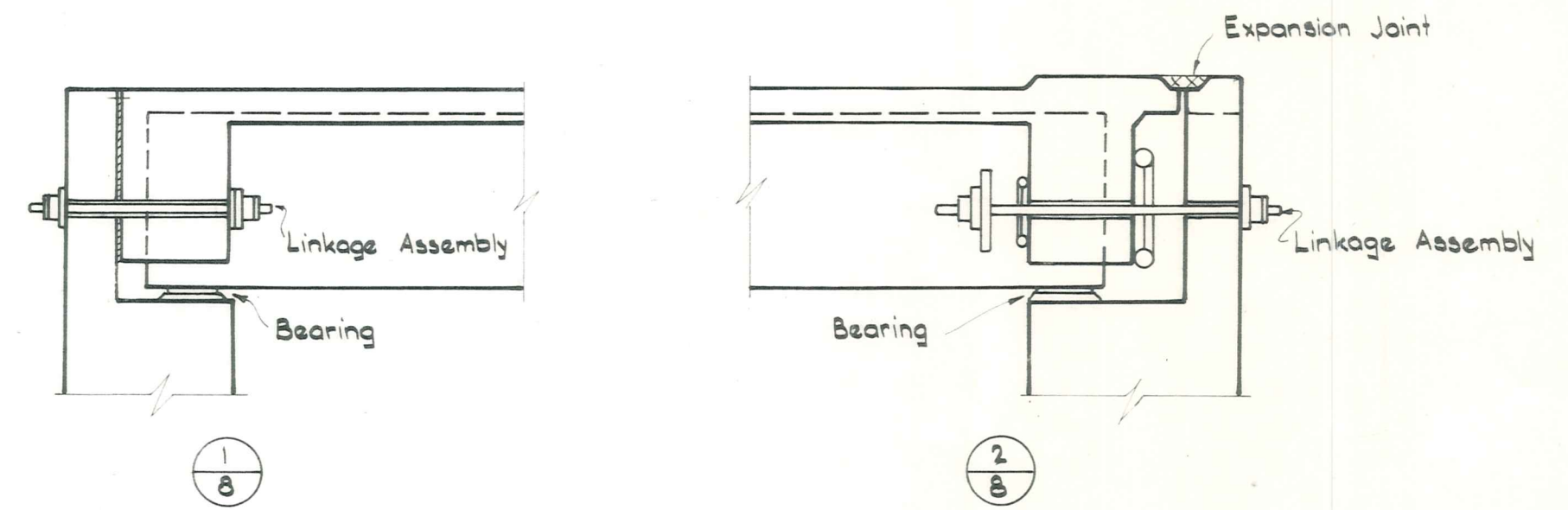
ORL. MAL. SIZE
mm INCHES
0 10 20 30 40 50 100 150 200



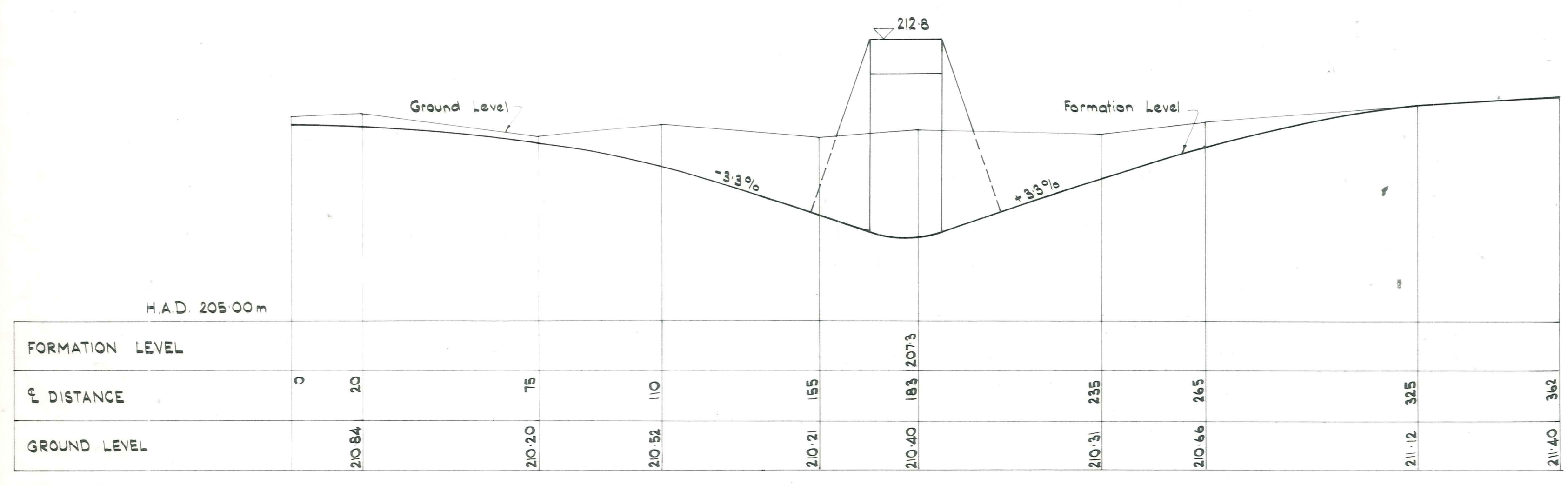
ELEVATION
Scale: 1:50



Scale: 1:50

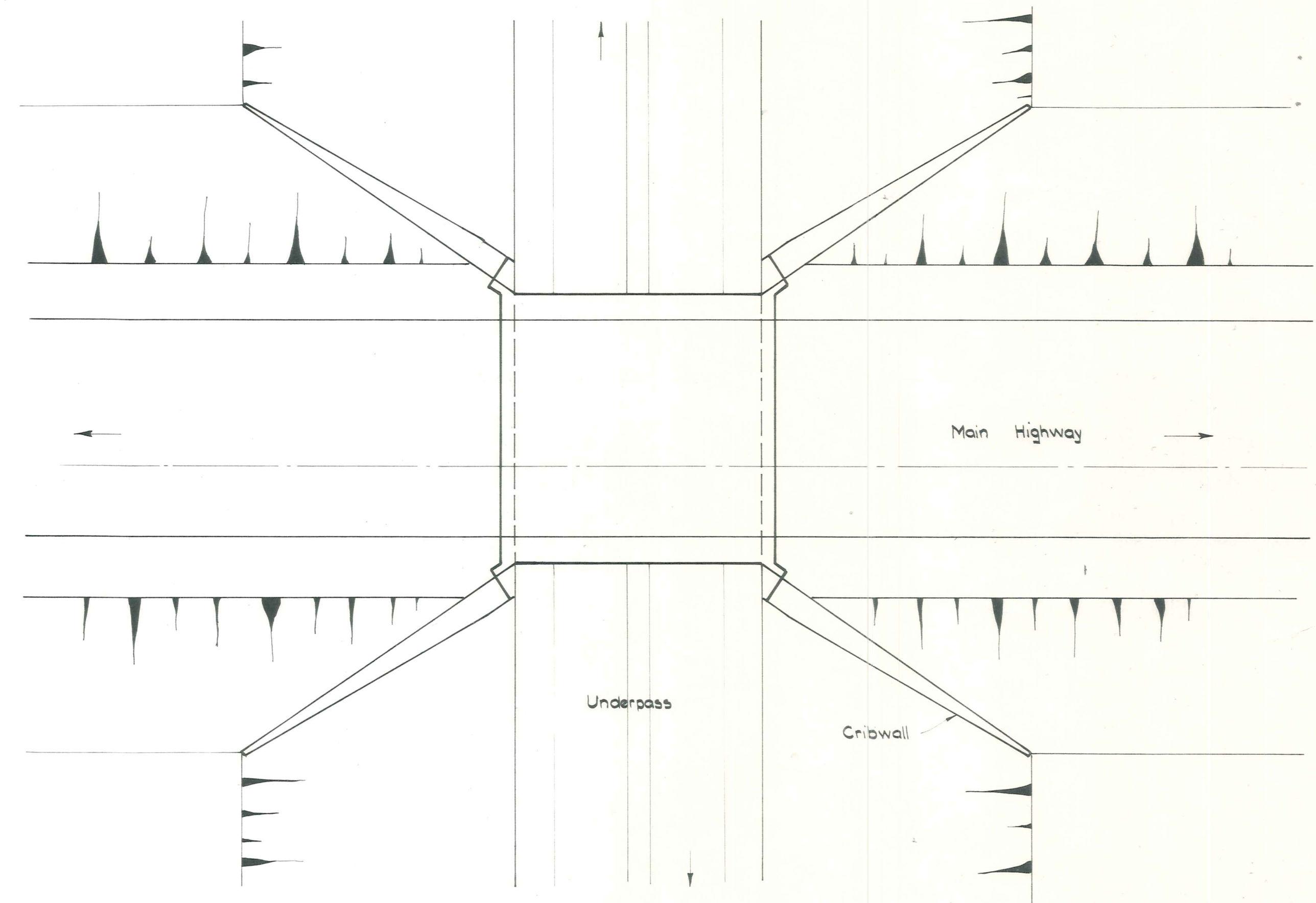


SEISMIC DETAILS AT ABUTMENTS



LONGITUDINAL SECTION

Scales: Horizontal: 1:1000
Vertical: 1:100



LAYOUT PLAN
Scale: 1:200

CROMWELL
DEVELOPMENT COMMITTEE

OFFICE
DUFFILL WATTS & KING LTD.
CONSULTING CIVIL & STRUCTURAL ENGINEERS
DUNEDIN INVERCARGILL BALCLUTHA
CROMWELL

TITLE	RE-ALIGNMENT OF STATE HIGHWAY 8		SCALES AS SHOWN	JOB NO. SG2/100
DRAWN	GMB & GG	June '75	FILE 64/3	SHEET NO. 8
TRACED	JEM	June '75		
CHECKED		17/75	8199	of 8 sheets
APPROVED				