

Drawn by
Checked

REINFORCEMENT SCHEDULE

FOR
REID'S BRIDGE

VINCENT COUNTY

Ref. No.
Drwg. No. $\frac{1}{2}$ & $\frac{1}{3}$
Sheet No. 2
Date 15/12/47

E. R. GARDEN & ASSOCIATES.

Dimensions to stirrups and hooks are inside. Dimensions to bars are outside to outside.

| R | D | No. | L | WITH | CUT FROM | BENDING |
|-----|---------------|-----|--------|------|----------|---------|
| A9 | $\frac{7}{8}$ | 4 | 16'-6" | | | |
| A10 | $\frac{7}{8}$ | 4 | 18'-0" | | | |
| A11 | $\frac{7}{8}$ | 4 | 19'-0" | | | |
| A12 | $\frac{7}{8}$ | 4 | 20'-6" | | | |
| A13 | $\frac{7}{8}$ | 32 | 8'-0" | | | |
| A14 | $\frac{6}{8}$ | 160 | 3'-3" | | | |
| | $\frac{7}{8}$ | 24 | 4'-4" | | | |
| J1 | $\frac{7}{8}$ | 34 | 4'-9" | | | |

Drawn by
Checked

REINFORCEMENT SCHEDULE

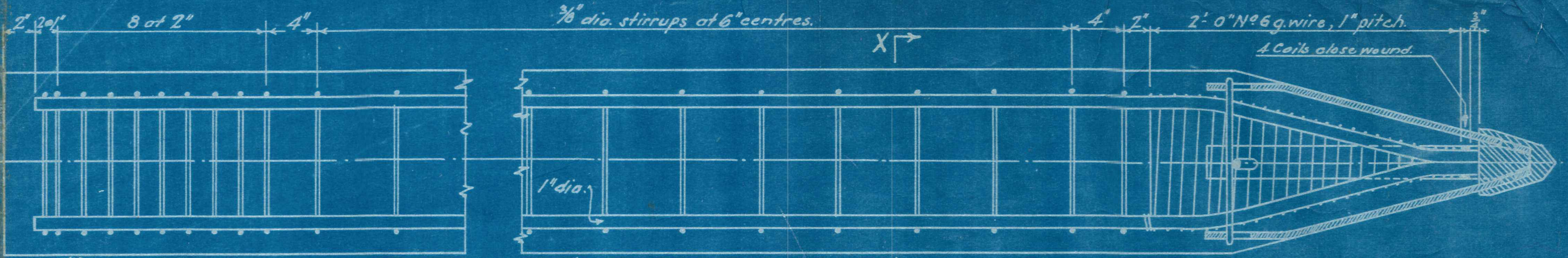
FOR
REID'S BRIDGE
VINCENT COUNTY

Ref. No.
Drwg. No. $V/2$ & $V/3$
Sheet No. 1
Date 15/12/27

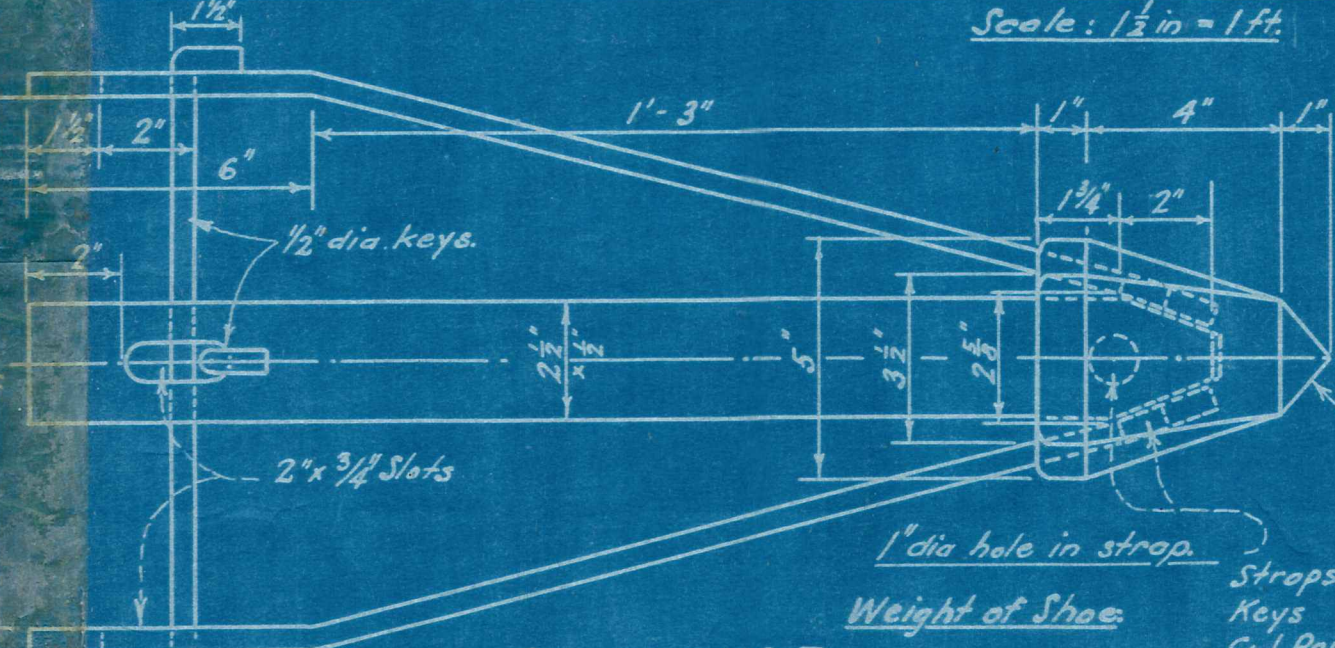
E. R. GARDEN & ASSOCIATES

Dimensions to stirrups and hooks are inside. Dimensions to bars are outside to outside.

| R | D | No. | L | WITH | CUT FROM | BENDING |
|----|-----|-----|---------|------|----------|---------|
| S1 | 1/8 | 17 | 19'-10" | | | 18'-0" |
| S2 | 1/8 | 16 | 29'-10" | | | 28'-0" |
| S3 | 1/8 | 34 | 13'-6" | | | |
| S4 | 1/8 | 32 | 19'-0" | | | |
| S5 | 1/8 | 12 | 28'-10" | | | 27'-0" |
| S6 | 1 | 39 | 16'-8" | | | 15'-0" |
| S7 | 5/8 | 26 | 16'-0" | | | 15'-0" |
| K1 | 5/8 | 2 | 48'-9" | | | |
| K2 | 5/8 | 2 | 49'-6" | | 12" | |
| K3 | 5/8 | 4 | 7'-9" | | | 6'-9" |
| K4 | 5/8 | 4 | 7'-9" | | | |
| K5 | 1/4 | 20 | 8'-0" | | | |
| K6 | 1/4 | 8 | 7'-6" | | | |
| K7 | 1/4 | 8 | 7'-3" | | | |
| K8 | 1/4 | 48 | 6'-9" | | | |
| H1 | 5/8 | 16 | 41'-6" | | | |
| H2 | 6g | 140 | 2'-6" | | | |
| H3 | 6g | 140 | 2'-2" | | | |
| H4 | 5/8 | 24 | 10'-9" | | | |
| H5 | 6g | 48 | 2'-6" | | | |
| A1 | 1 | 8 | 30'-0" | | | 28'-4" |
| A2 | 5/8 | 12 | 29'-4" | | | 28'-4" |
| A3 | 5/8 | 4 | 25'-4" | | | 24'-4" |
| A4 | 5/8 | 2 | 21'-0" | | | 20'-0" |
| A5 | 5/8 | 8 | 8'-0" | | | 7' |
| A6 | 5/8 | 32 | 15'-0" | | | |
| A7 | 5/8 | 4 | 13'-6" | | | |
| A8 | 5/8 | 4 | 15'-0" | | | |

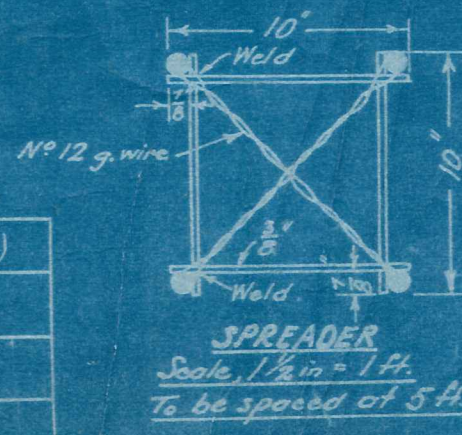
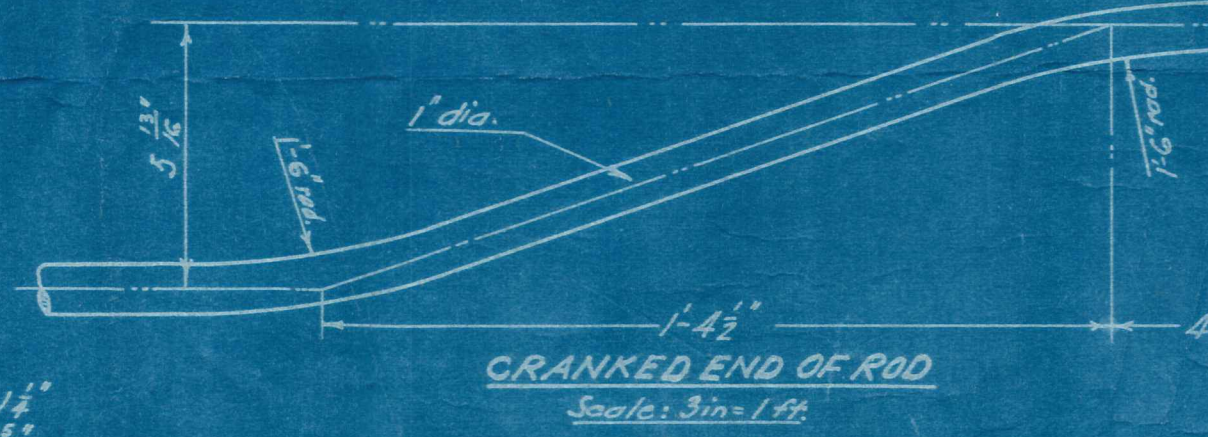
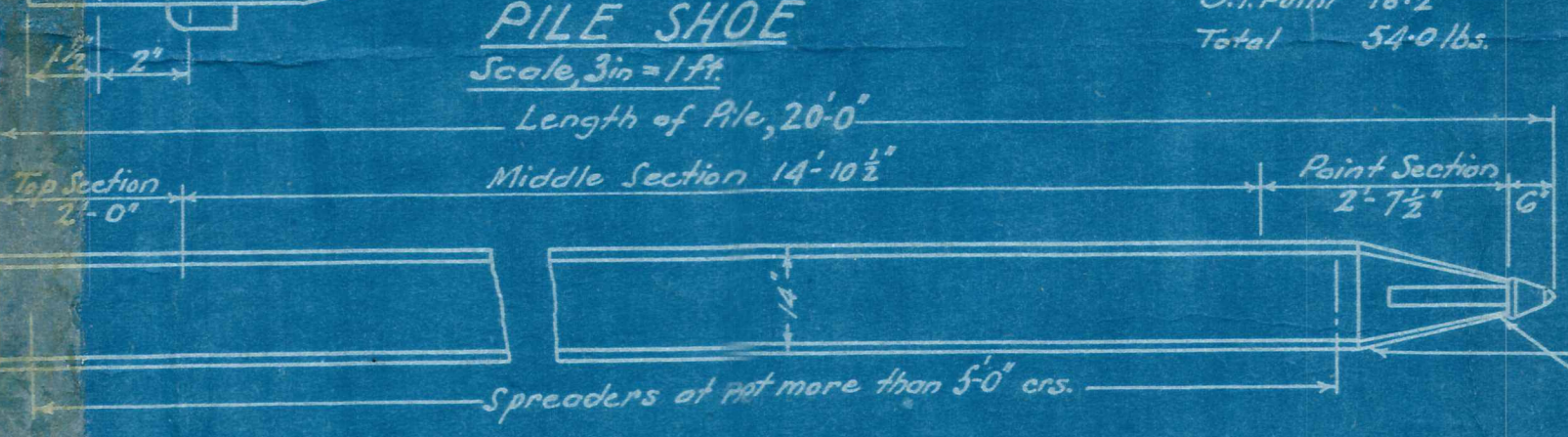
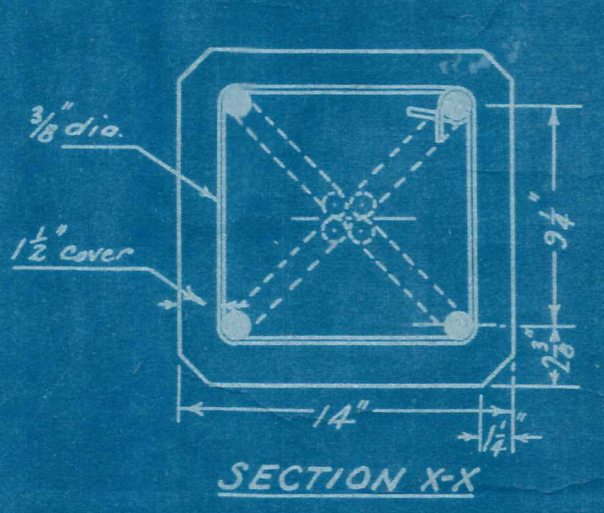
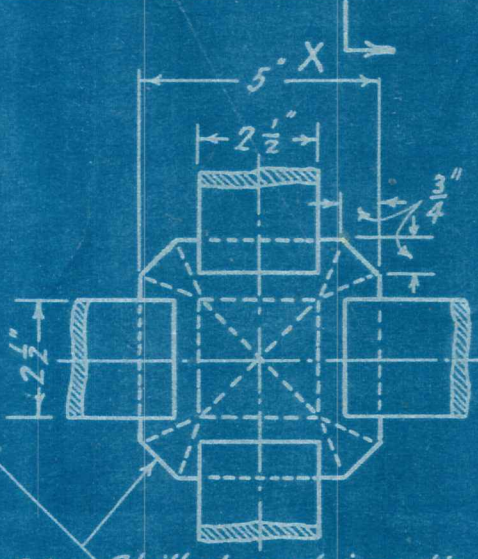


Scale: $\frac{1}{2}$ in = 1 ft.



PILE SHOE
 Scale, 3 in = 1 ft.

Weight of Shoe:
 Straps 34.1
 Keys 1.7
 C.I. Point 10.2
 Total 54.0 lbs.

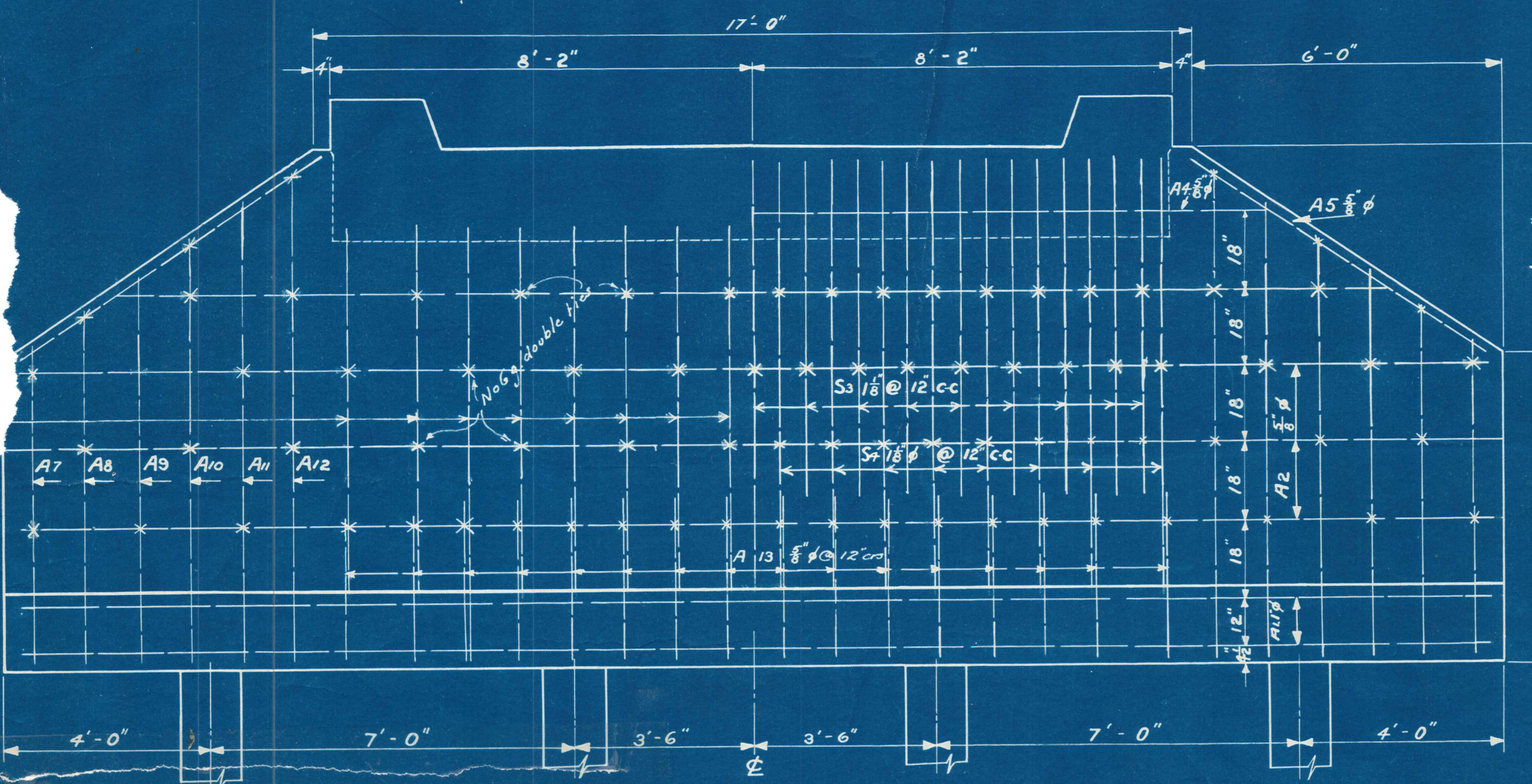


QUANTITIES

| | Concrete (cub ft.) | 1" dia Rods (lin ft) | $\frac{3}{8}$ " dia. rods (lin ft) | No. 6 g. wire (lin ft) |
|---|--------------------|----------------------|------------------------------------|------------------------|
| 14" square pile | | | | |
| Top Section 2'-0" long | 2.679 | 7.32 | 40 | - |
| Middle Section per foot run. | 1.340 | 4.00 | 8 | - |
| Point Section 2'-7 $\frac{1}{2}$ " long. | 2.392 | 11.0 | 8 | 60 |

**STANDARD 14 INCH SQUARE
 REINFORCED CONCRETE PILE
 (FOR DRIVING)**

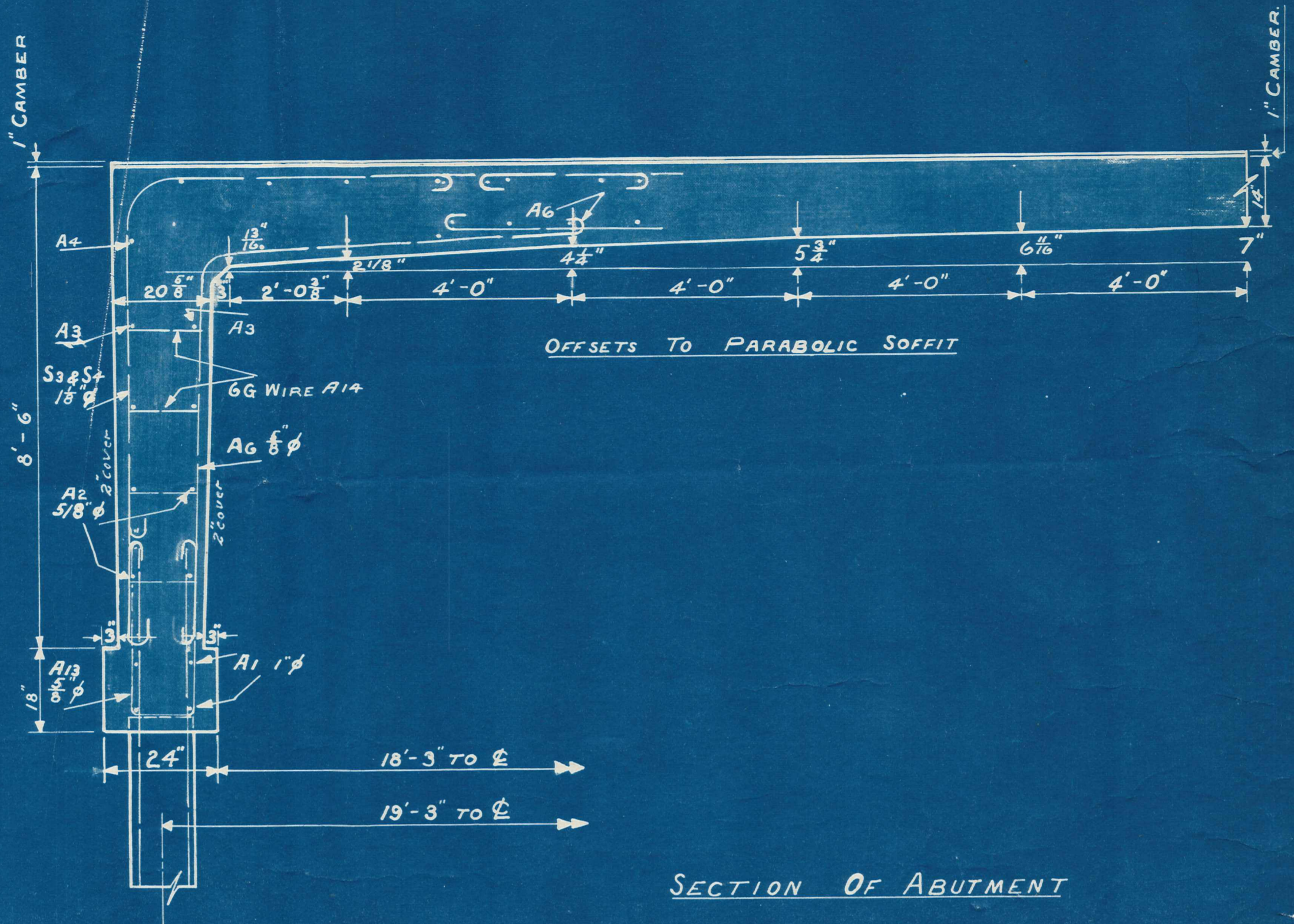
DRAWING No 12
 F. R. Gardiner and Associates
 Civil Engineers & Surveyors.
 DUNEDIN



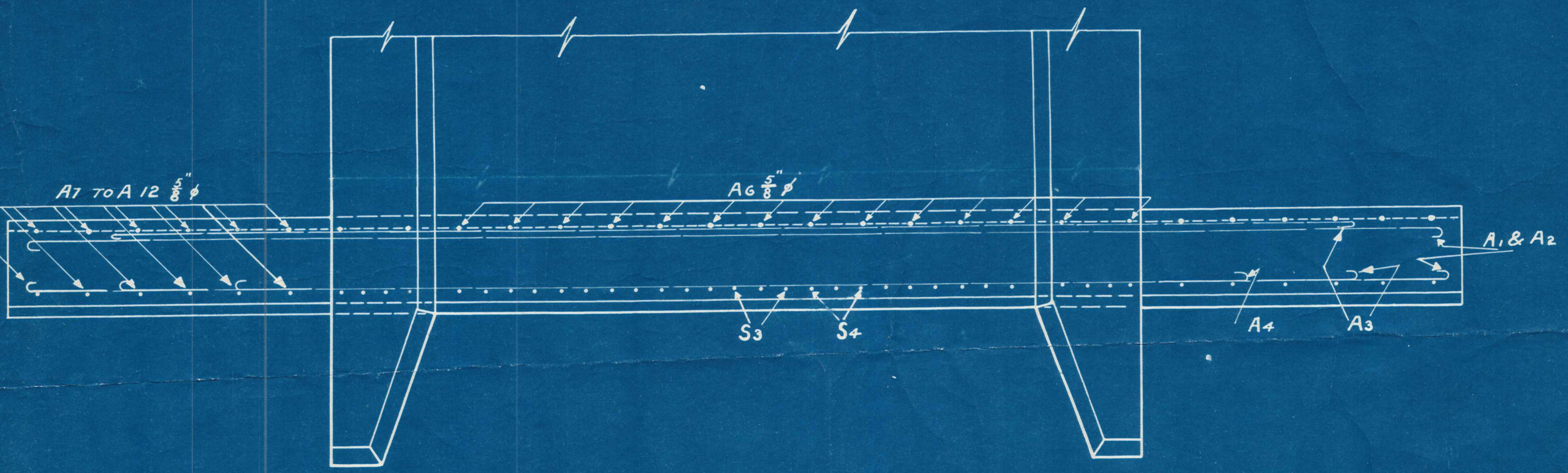
HALF ELEVATION SHOWING INSIDE STEEL

ELEVATION OF ABUTMENT

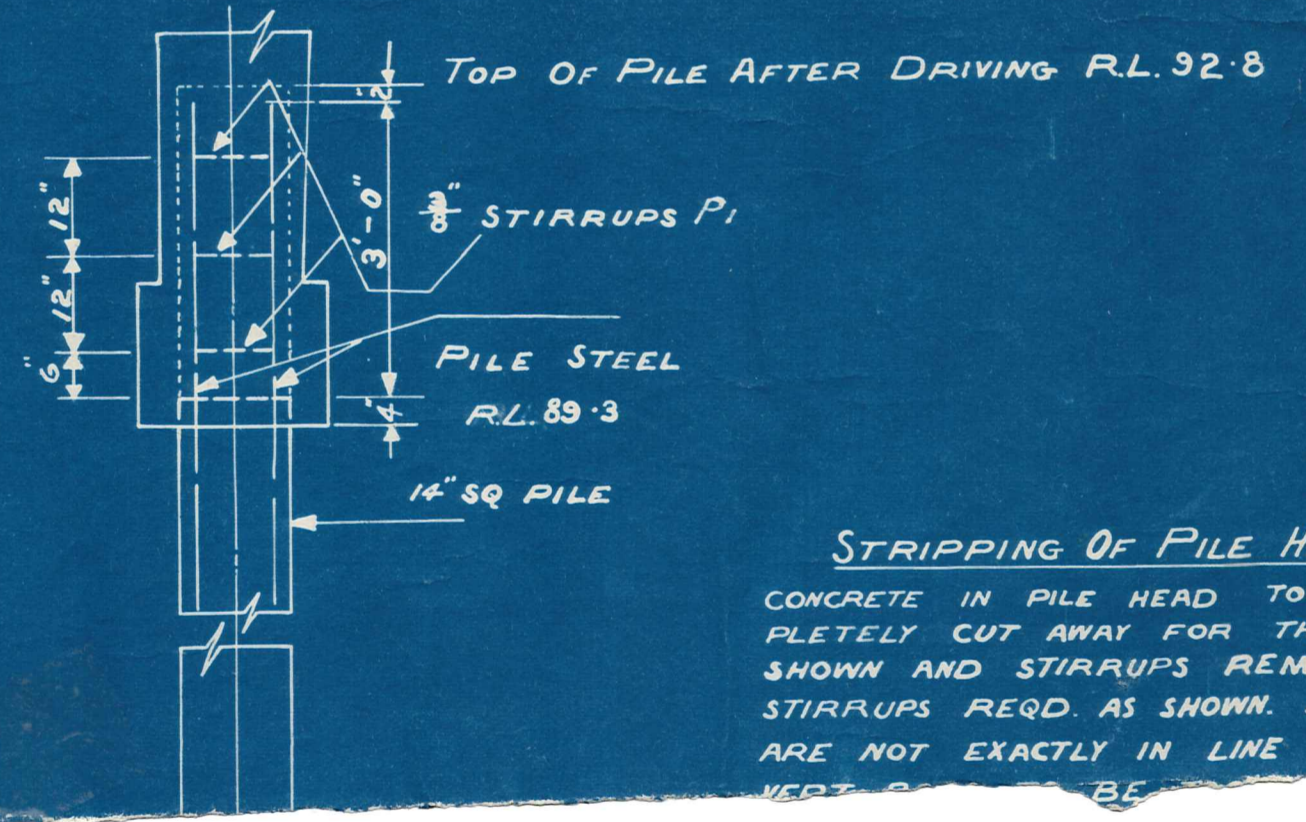
HALF ELEVATION SHOWING OUTSIDE STEEL



SECTION OF ABUTMENT



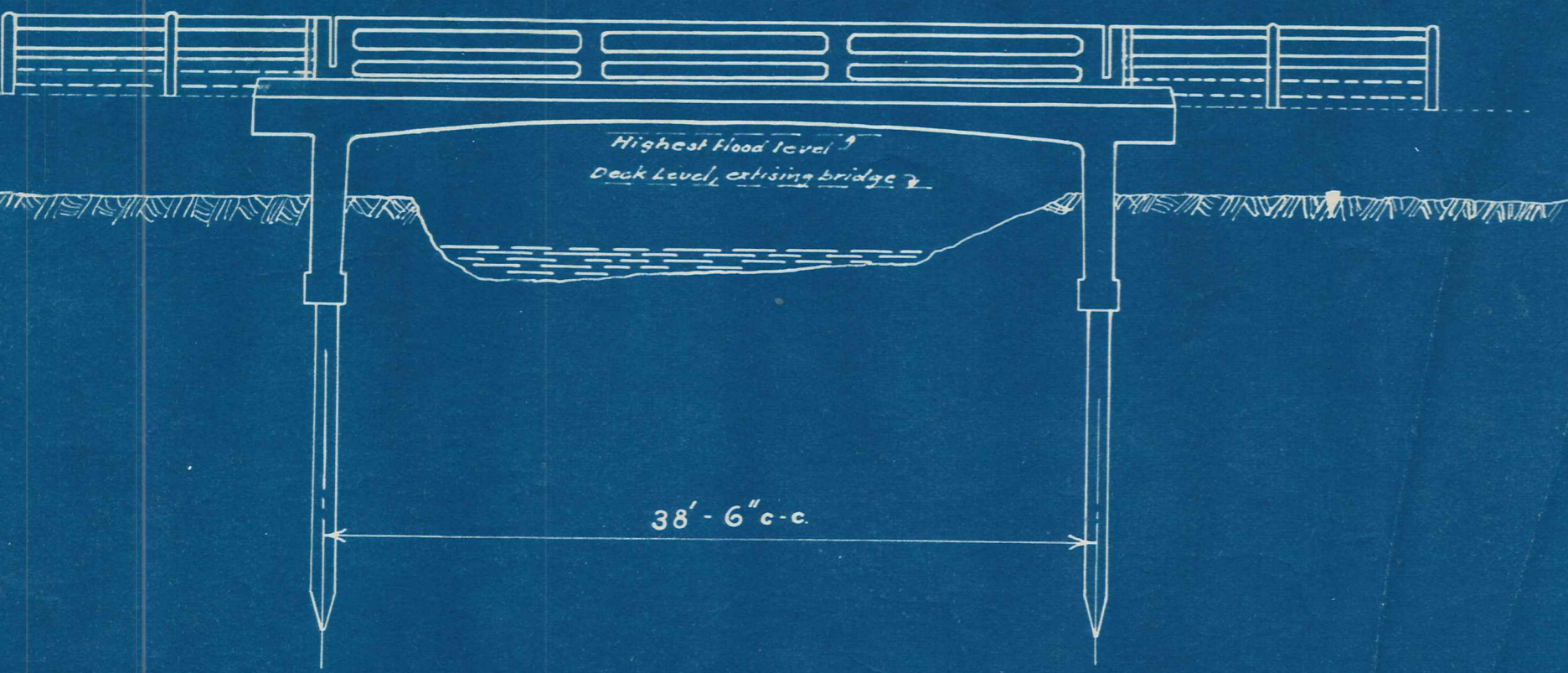
PLAN OF ABUTMENT



STRIPPING OF PILE HEAD
 CONCRETE IN PILE HEAD TO BE COMPLETELY CUT AWAY FOR THE DISTANCE SHOWN AND STIRRUPS REMOVED. 3 NEW STIRRUPS REQD. AS SHOWN. IF PILE ARE NOT EXACTLY IN LINE EXPOSED VERT. SURFACE BE

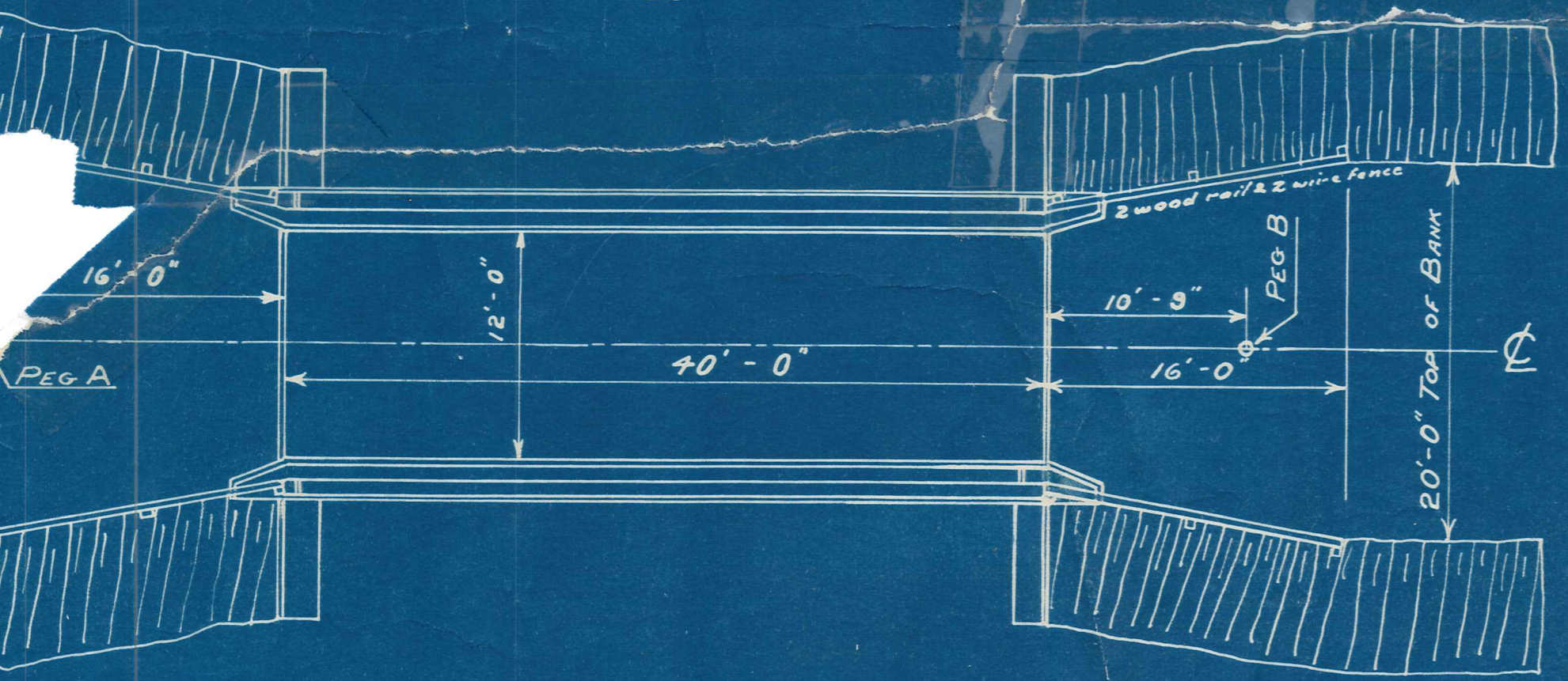
R. GARDEN & ASSOCIATES
 Consulting Engineers
 Dunedin

REID'S BRIDGE over THOMSON'S CREEK for VINCENT COUNTY

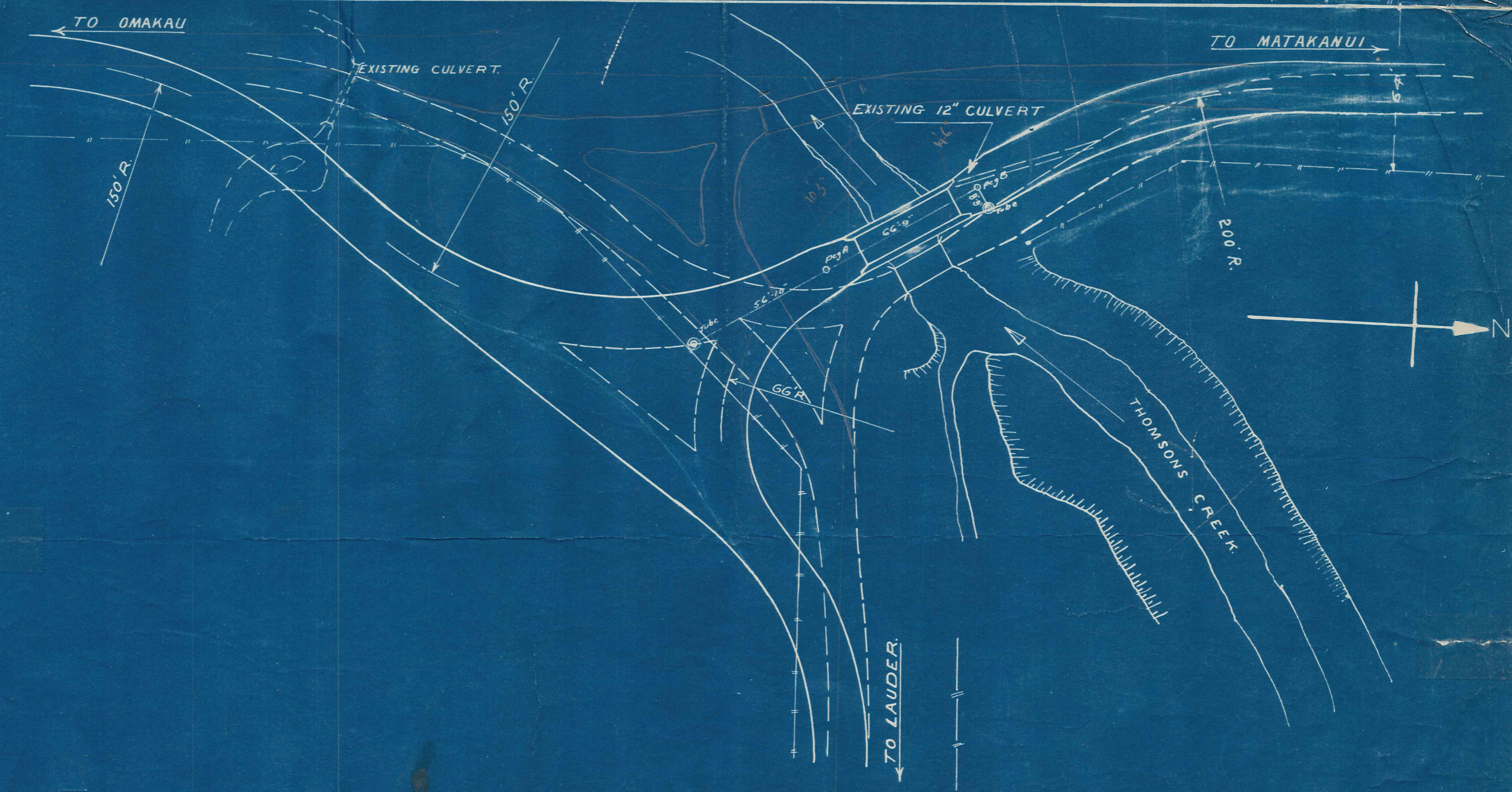


ELEVATION

SCALE: 8 FT TO 1 IN.

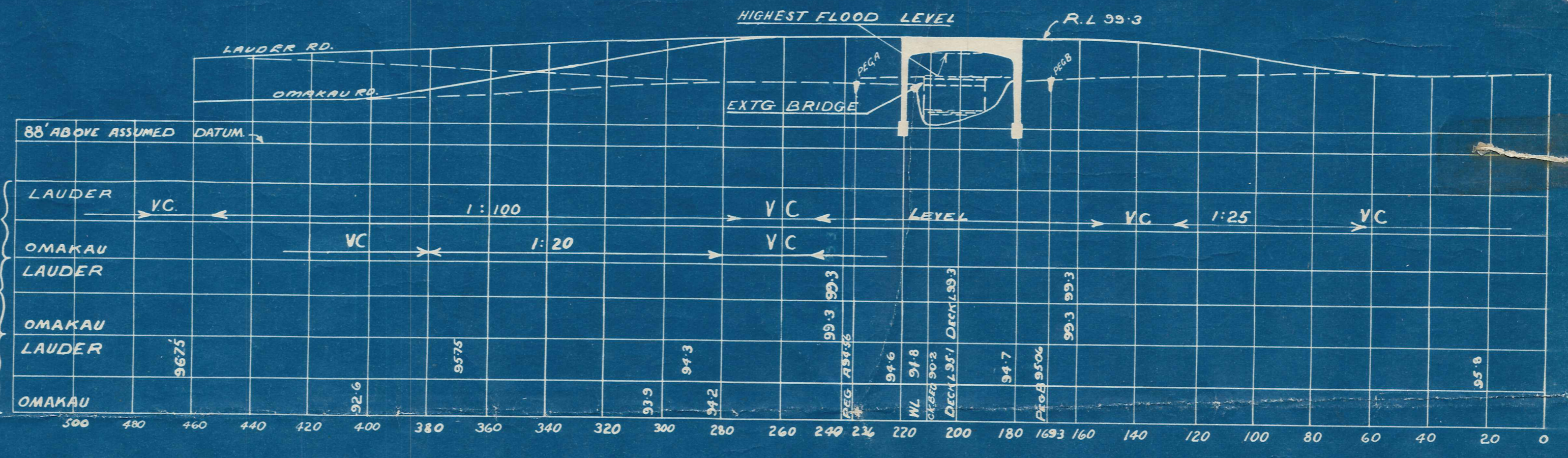
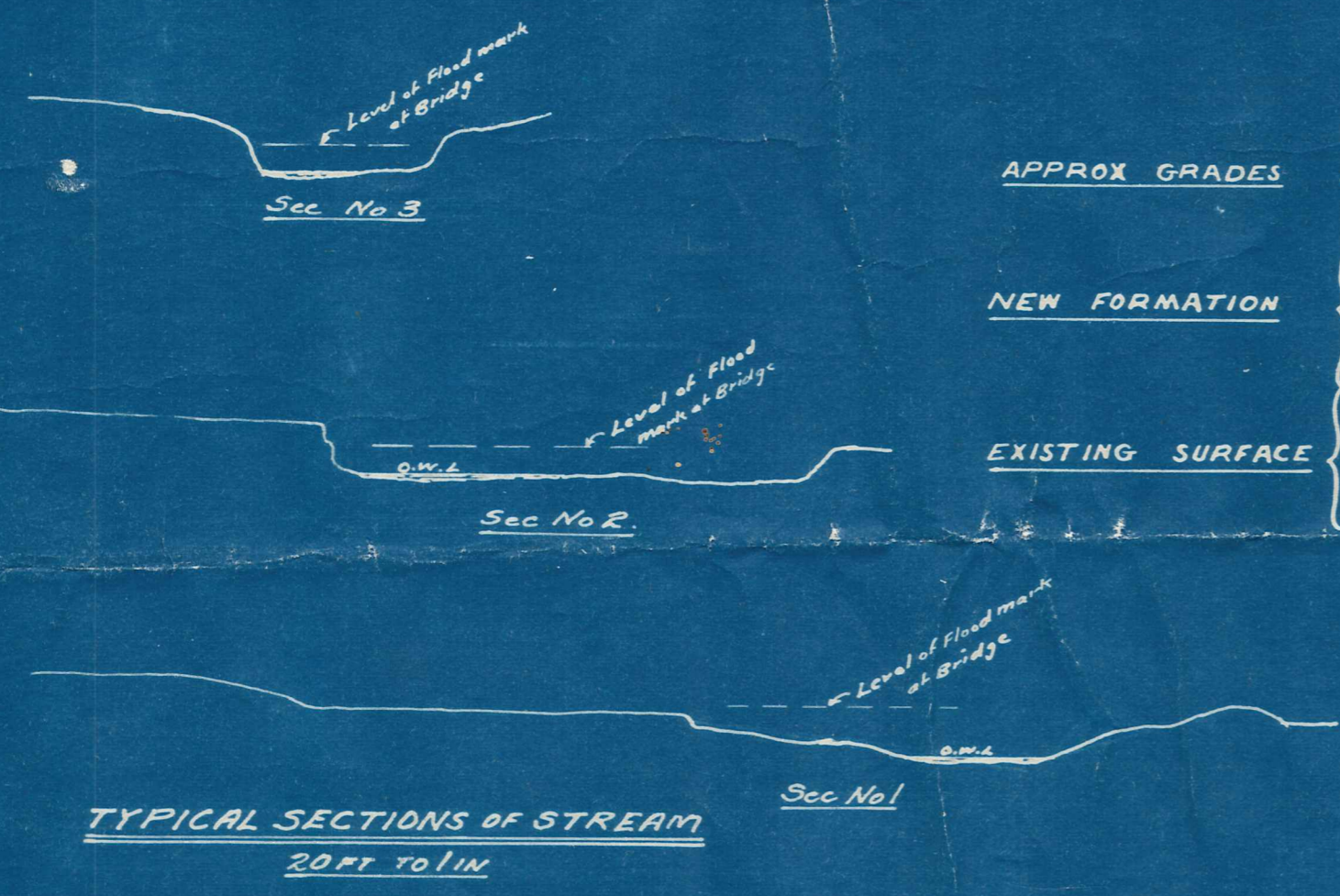
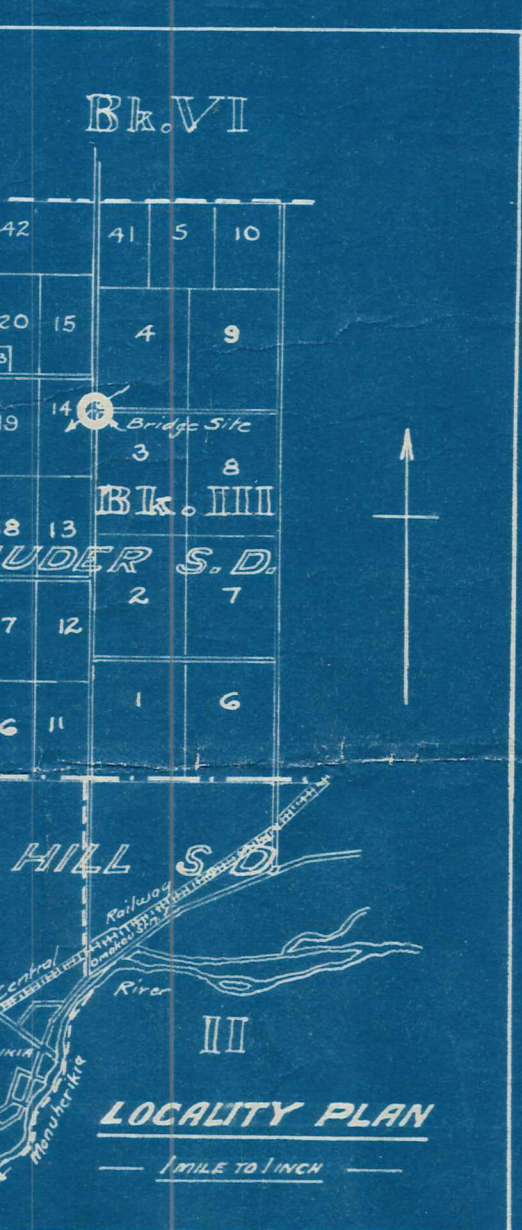


PLAN



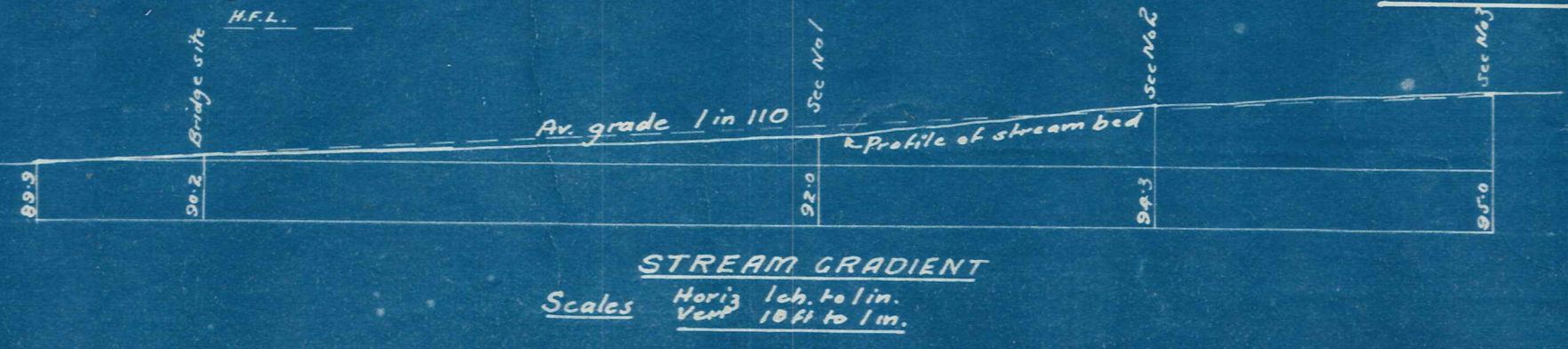
SITE PLAN

Showing suggested relocation of road approaches



LONGITUDINAL SECTION
LEVELS, GRADES, ETC. OF ROAD APPROACHES APPROX. ONLY

SCALES: - HORIZONTAL 1/2 CH. TO 1 IN.
VERTICAL 10 FT. TO 1 IN.



STREAM GRADIENT
Scales: Horiz 1 ch. to 1 in.
Vert 10 ft to 1 in.

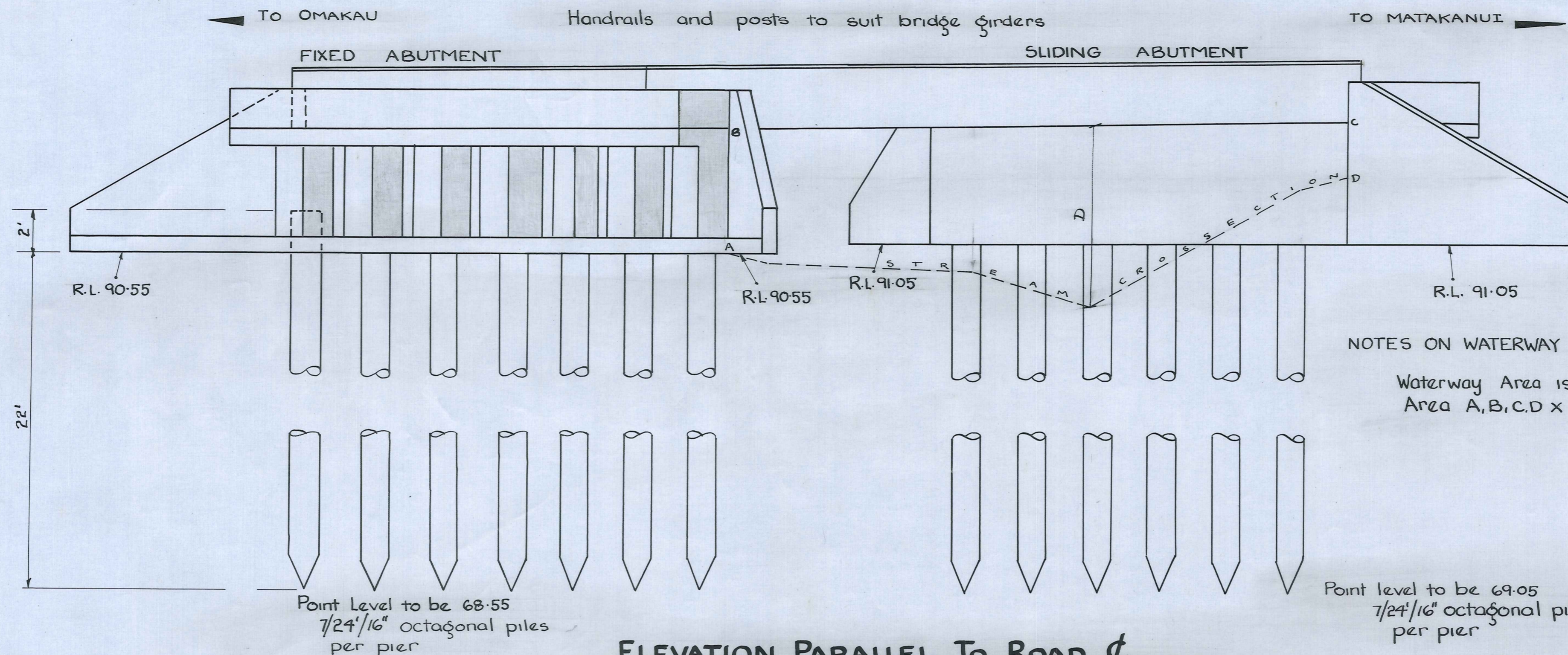
ARDEN & ASSOCIATES
Consulting Engineers.
Dunedin.

REID'S BRIDGE over THOMSON'S CREEK for VINCENT COUNTY COUNCIL

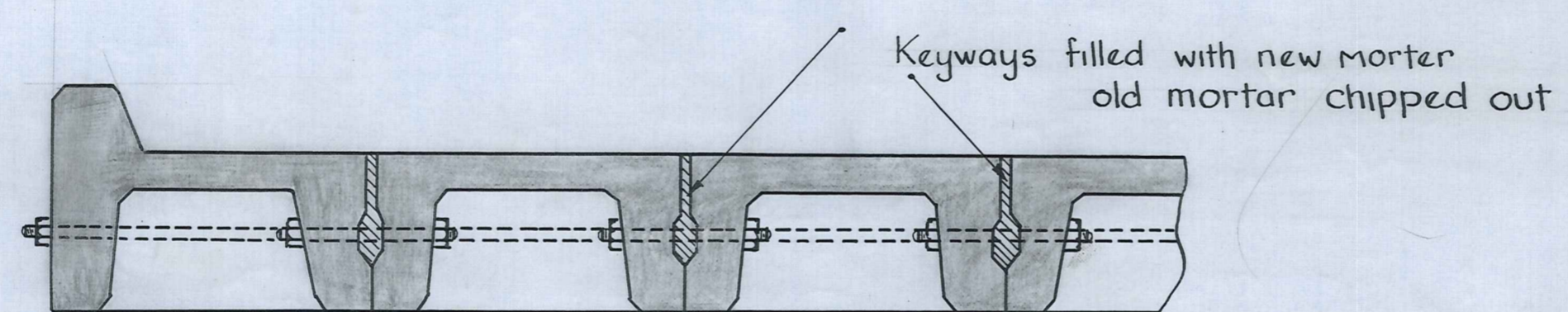
Scales: AS SHOWN

DWG NO. V/1

DRAWN R.J.R.G.
TRACED R.J.R.G.
APPROVED



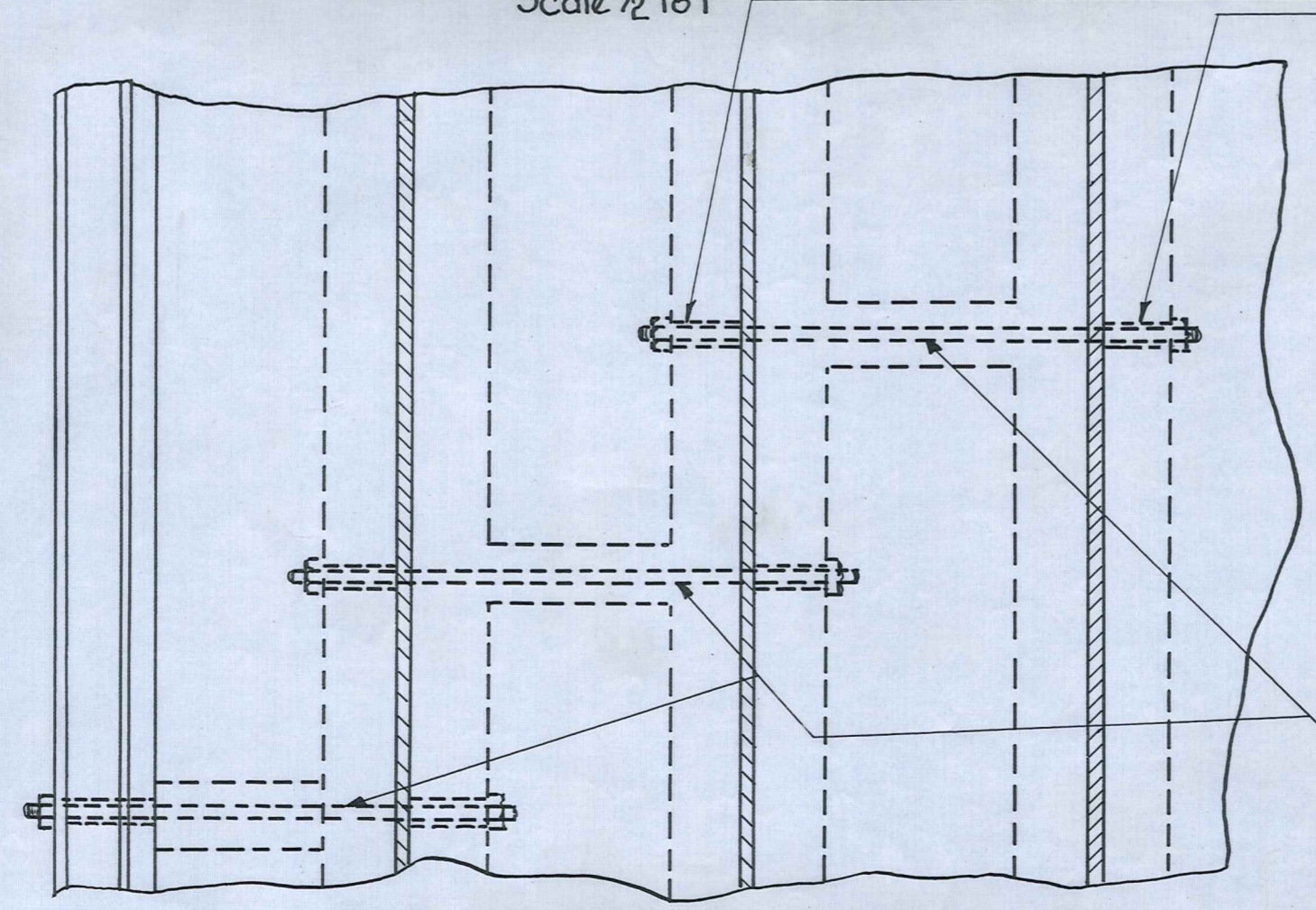
ELEVATION PARALLEL TO ROAD
(Filling not shown)
Scale 1/4" to 1'



DETAIL OF MORTARED DECK KEYS
Scale 1/2" to 1'

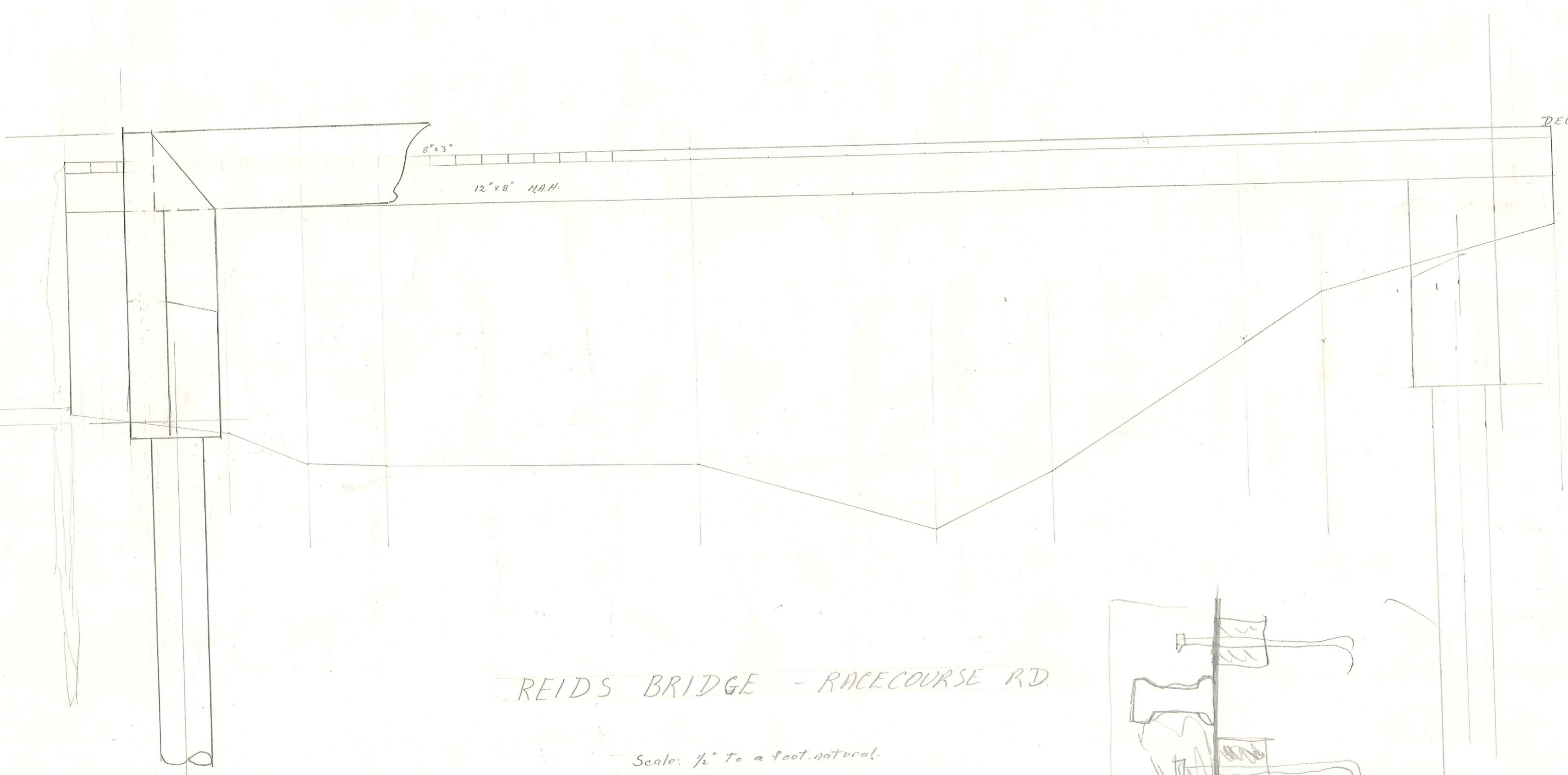
NOTES ON MORTAR KEYS

1. Before erection keyways will be coated with an approved lime wash
2. On erection tension bolts will be tightened up (a suitable 1 1/2" spacer will be required to keep the joint spread)
3. Mortar up joints and keep traffic off the bridge until mortar is up to full strength



PLAN OF MORTARED DECK KEYS
Scale 1/2" to 1'

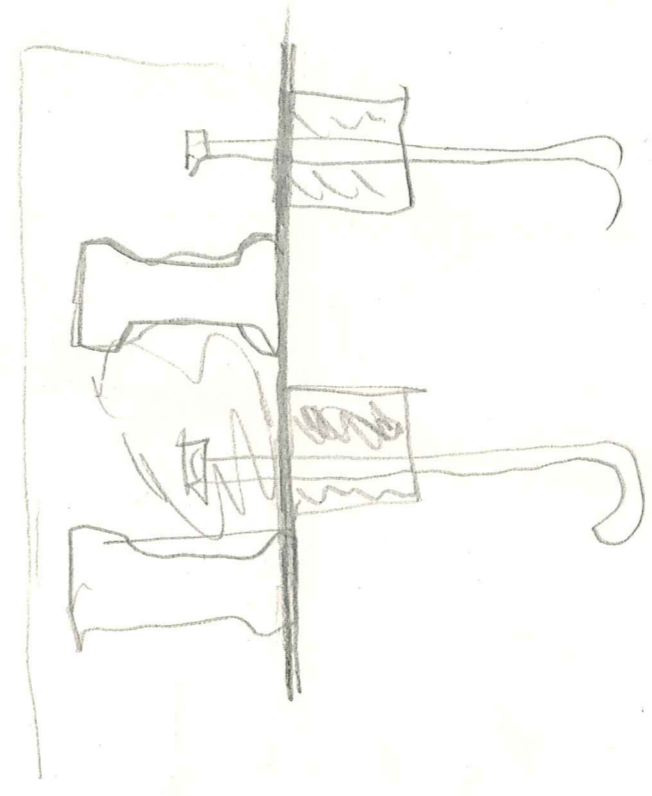
20 x 200
800



DECK LEVEL 97.80
11.25
96.55

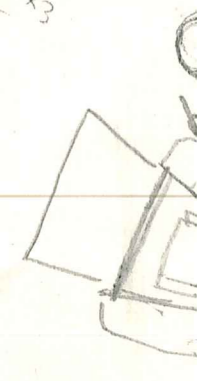
REIDS BRIDGE - RACECOURSE RD.

Scale: 1/2" to a foot, natural.



1000
50,000 x 8
8 x 14 x 8

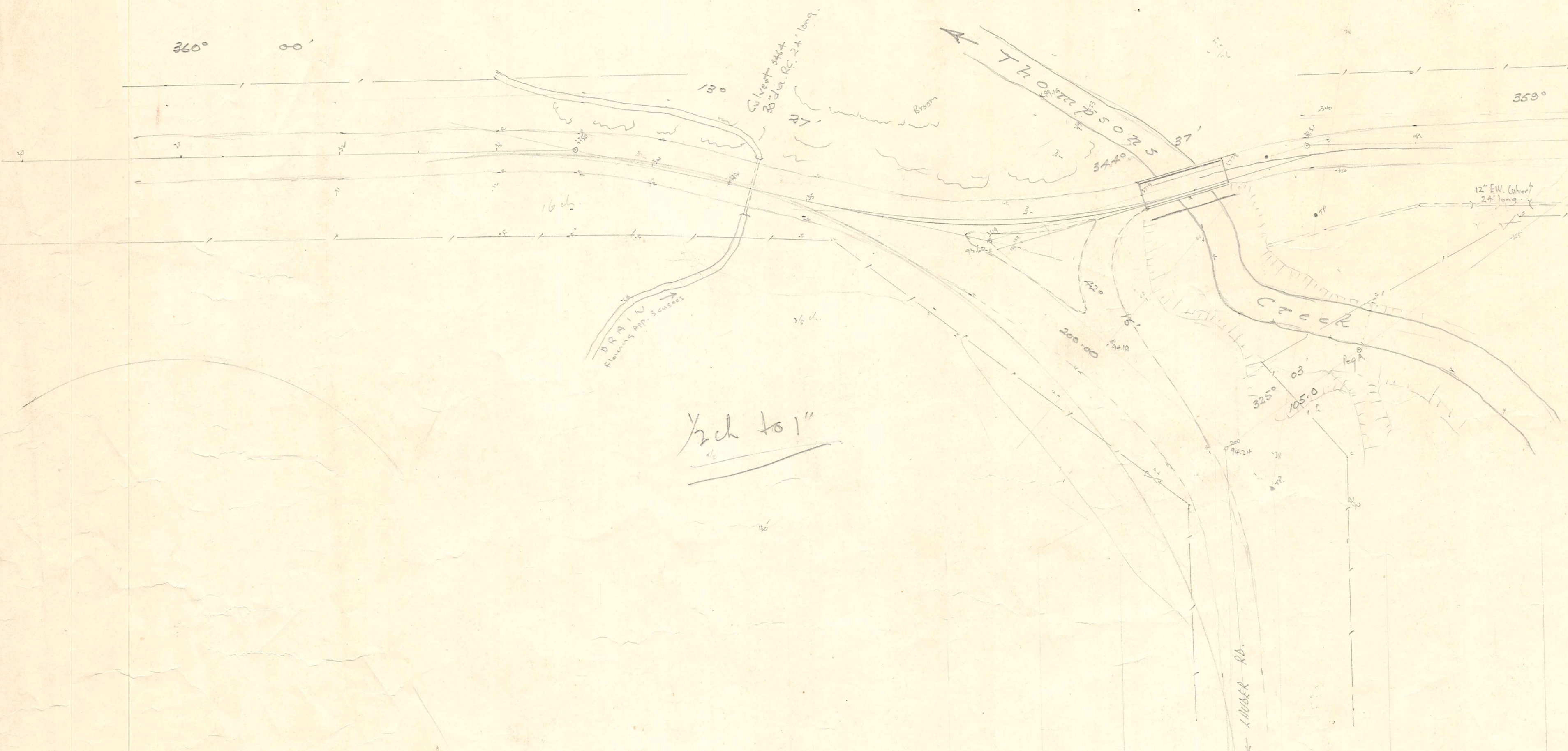
40
270 x 3
720



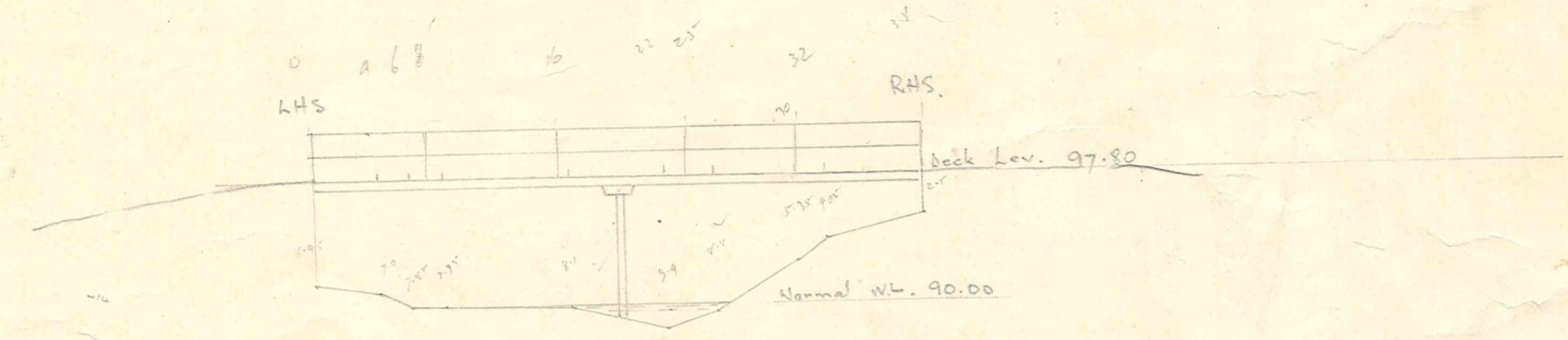
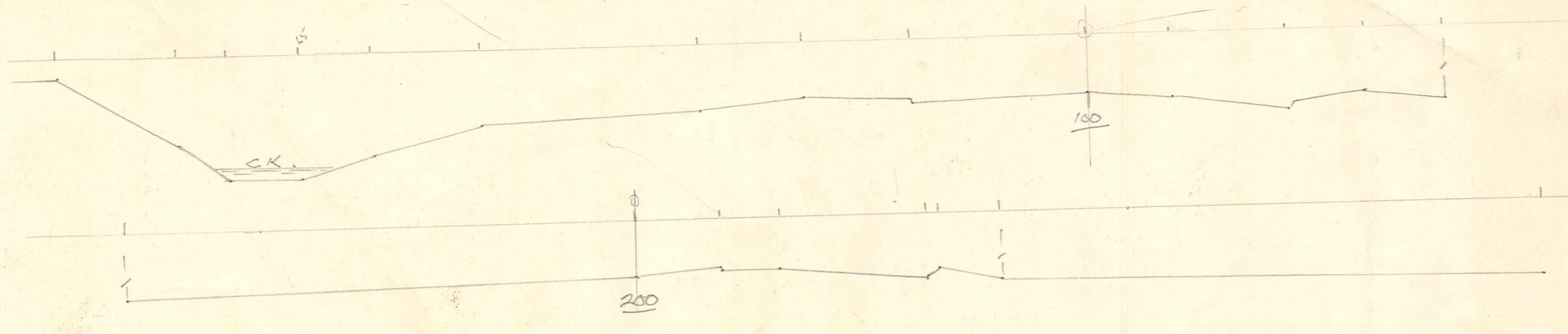
349 37
193 27
151' 10"

377 27
349 27
28 00

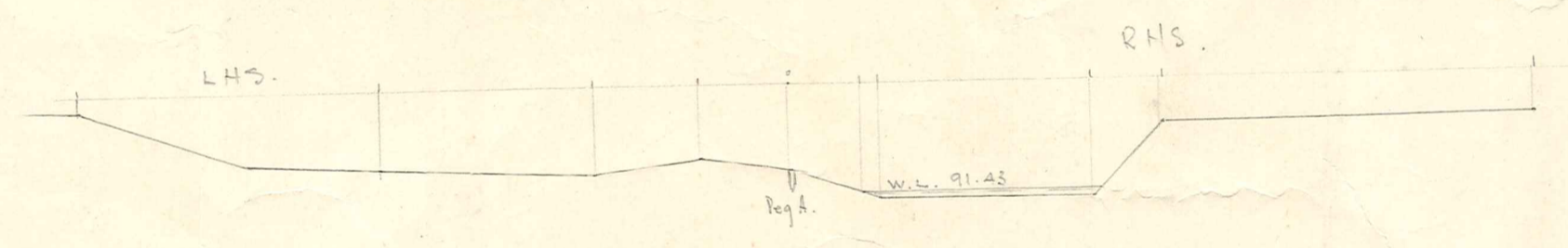
280'
37
91'



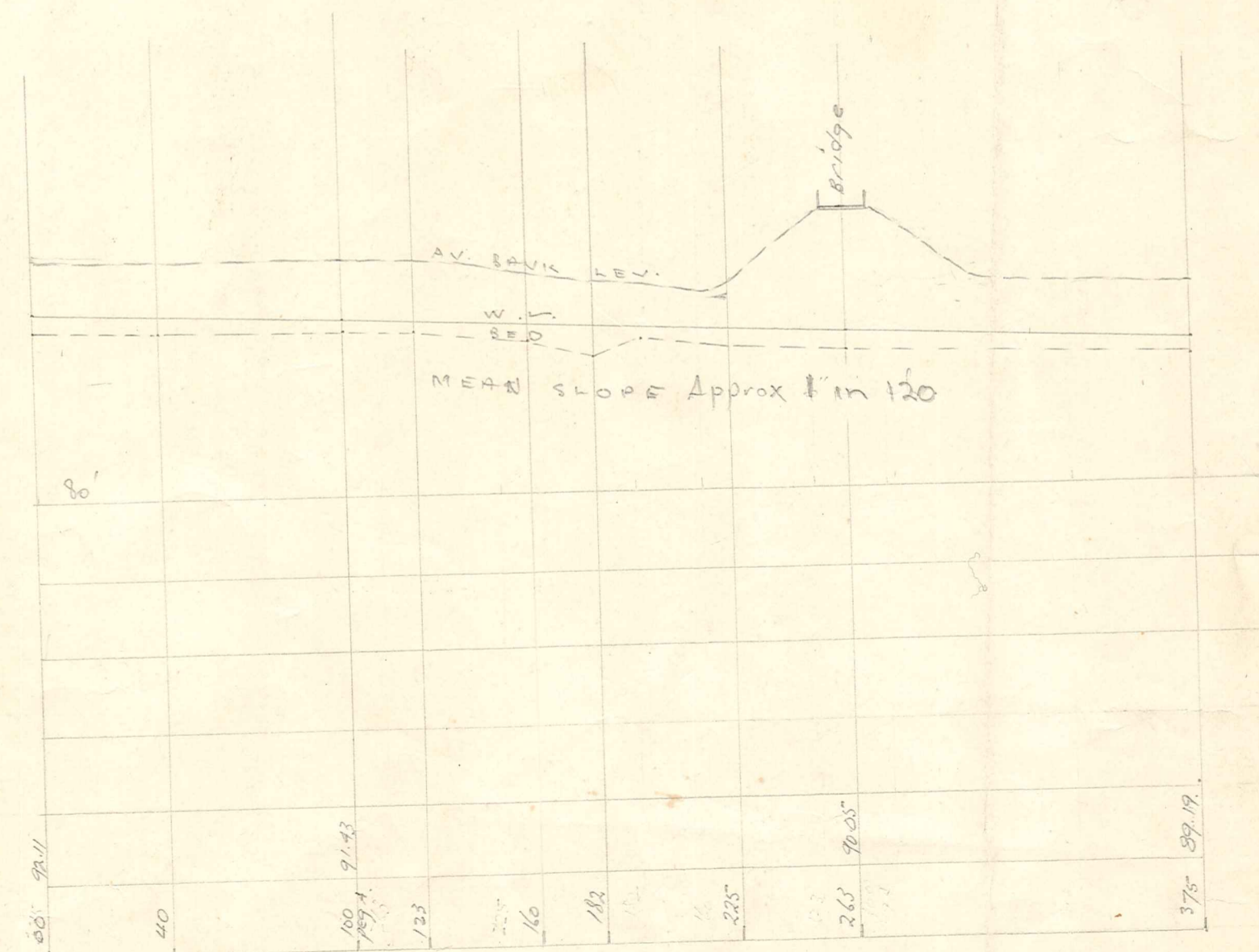
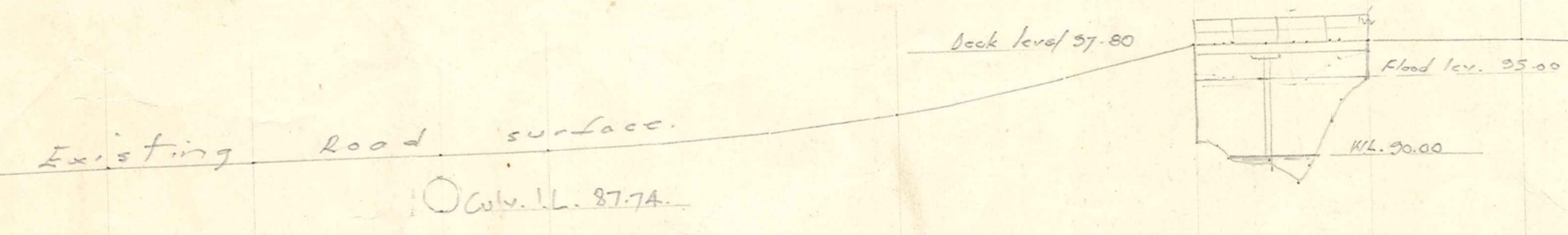
1/2" = 1'



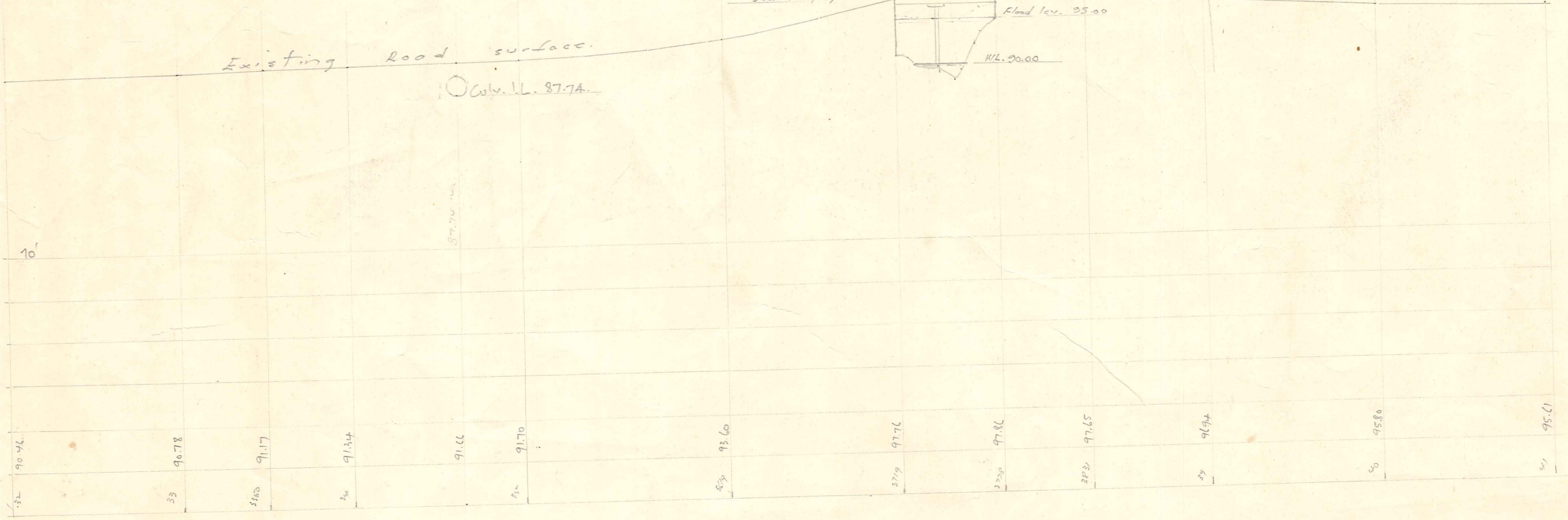
SECTION AT BRIDGE
DNSTM. SIDE.
10' = 1'



SECT. AT PEG A.



STREAM PROFILE
H 1/2" = 1'
V 10' = 1'



H 1/2" = 1'
V 10' = 1'

LEIDS BRGE. THOMPSONS CK