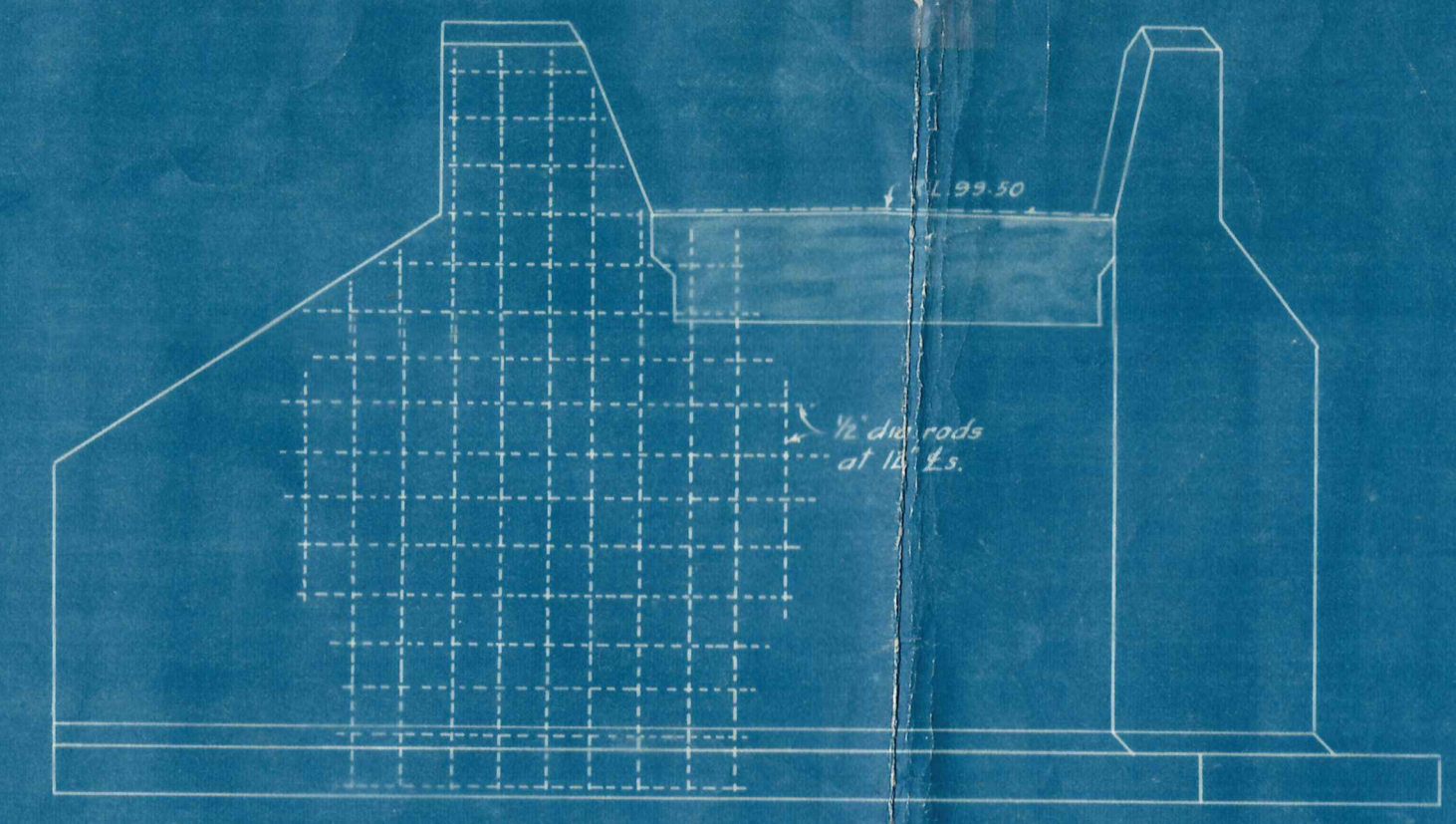
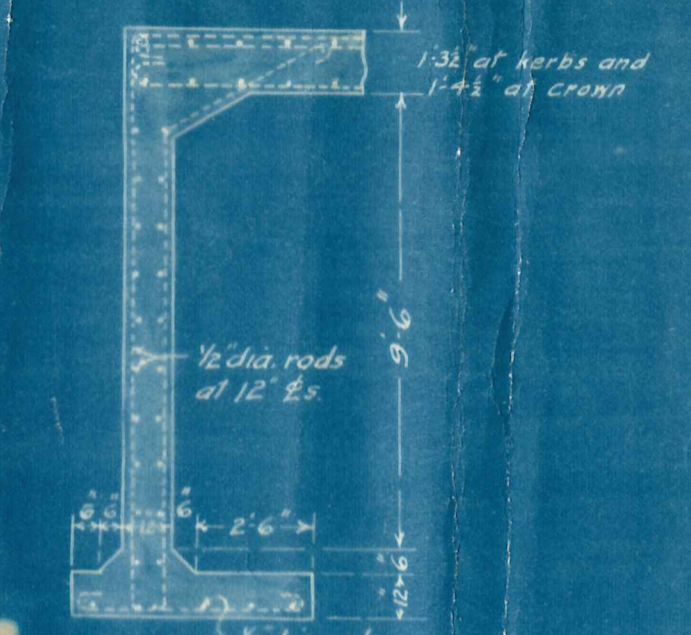


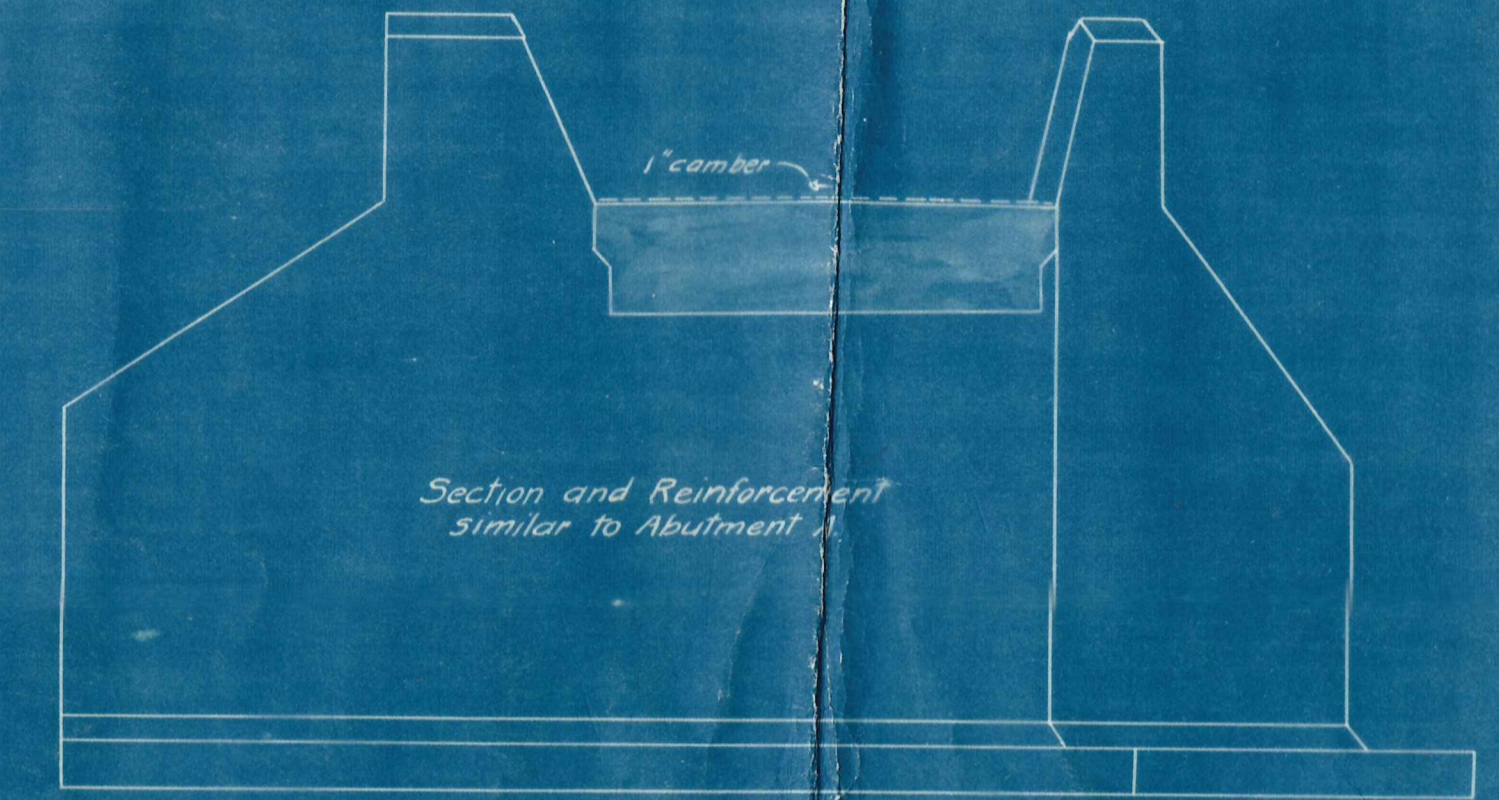
SECTION ON E OF BRIDGE



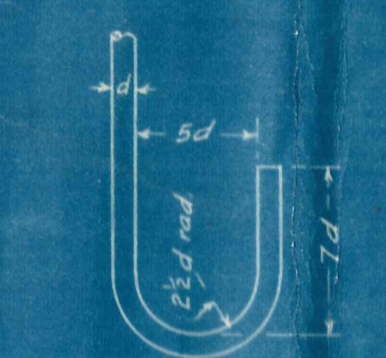
FRONT ELEVATION OF ABUTMENT A



SECTION ON E OF ROADWAY ABUTMENT A



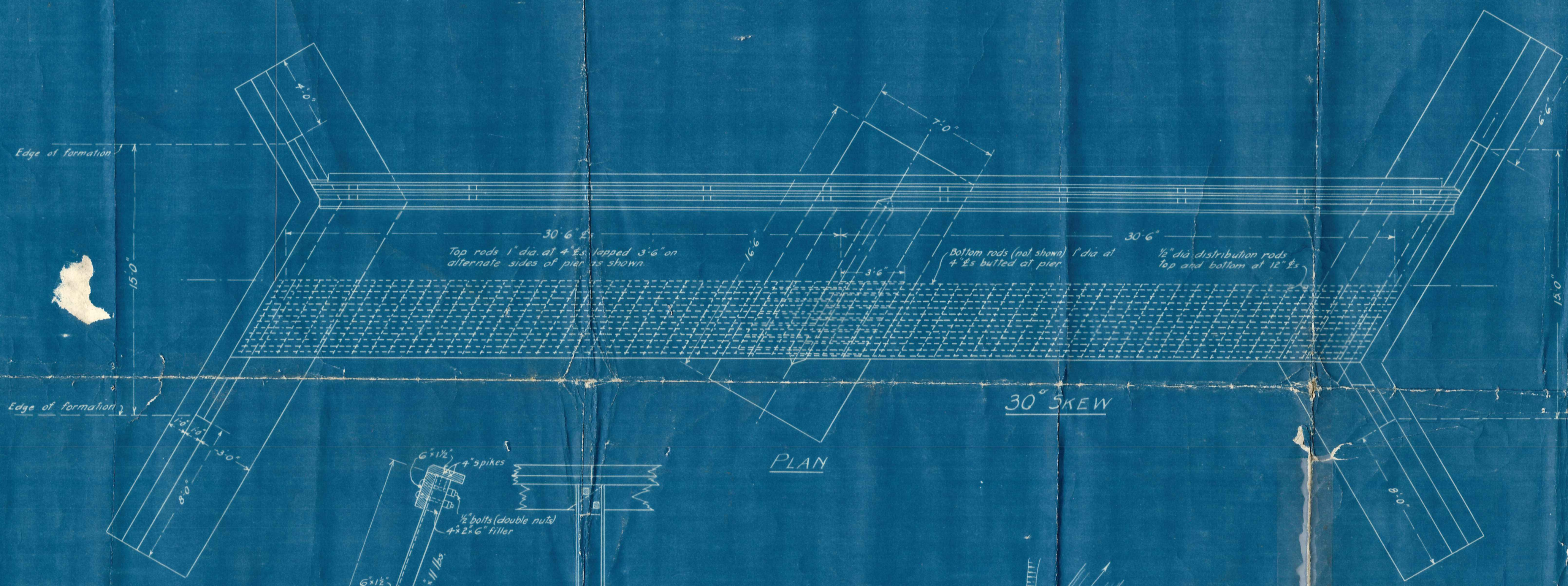
FRONT ELEVATION ABUTMENT C



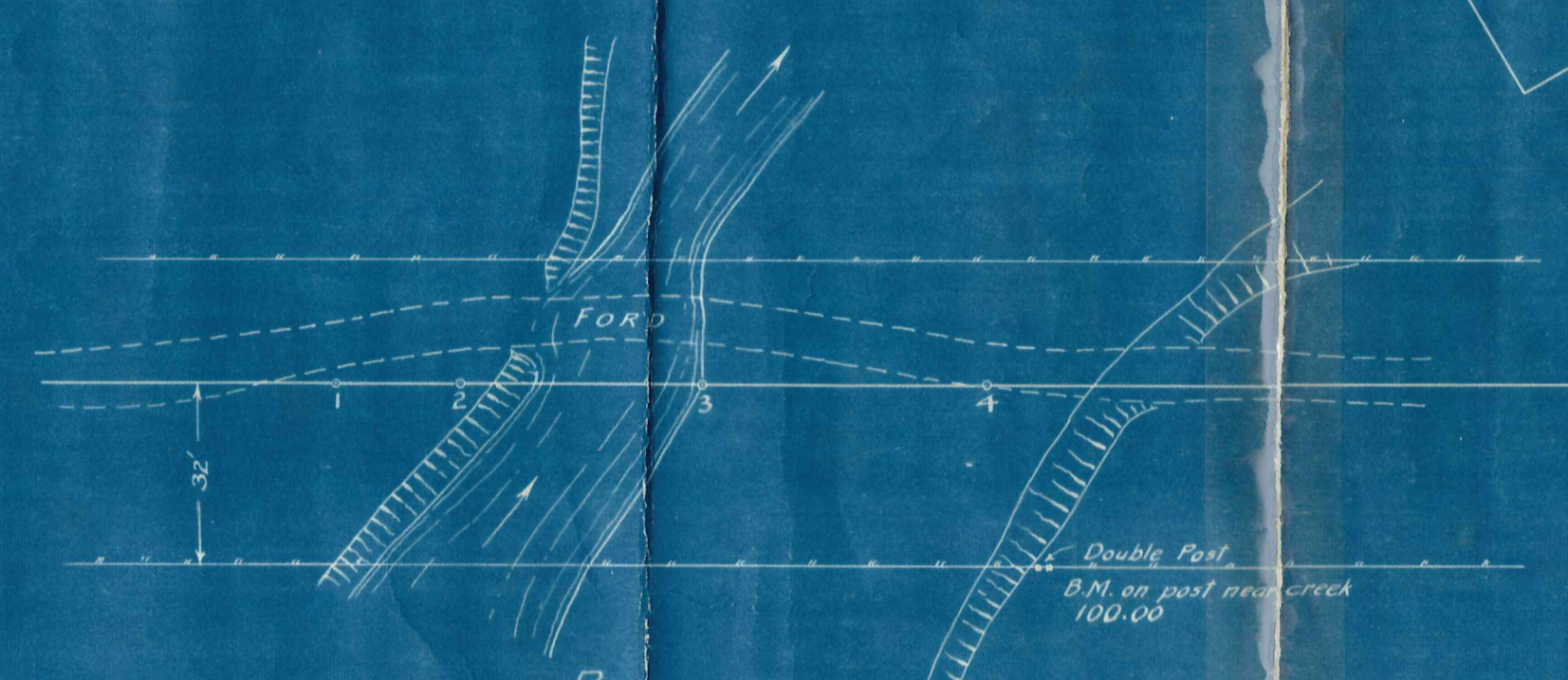
TYPICAL HOOK NOT TO SCALE



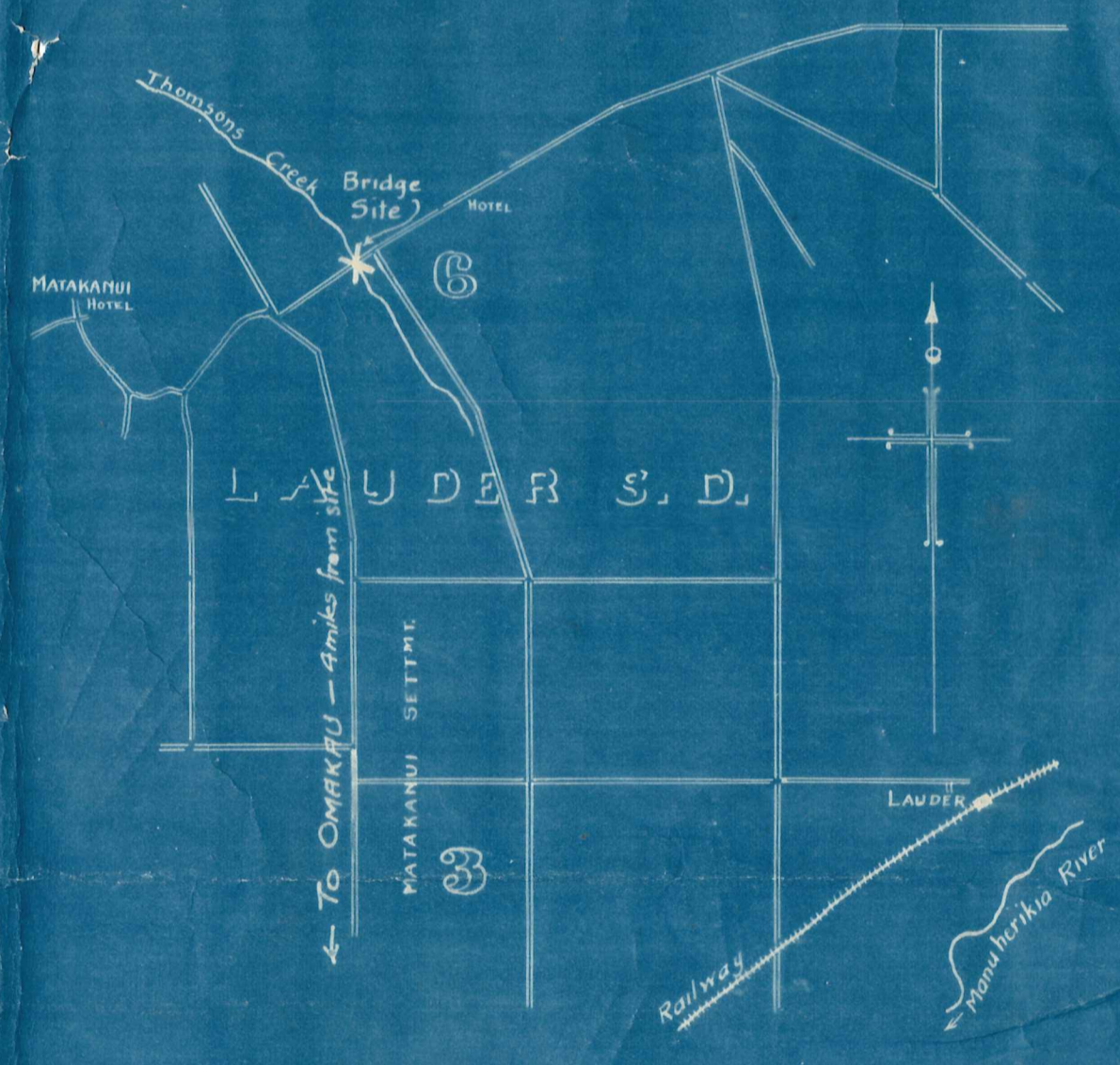
TYPICAL LAP JOINT NOT TO SCALE



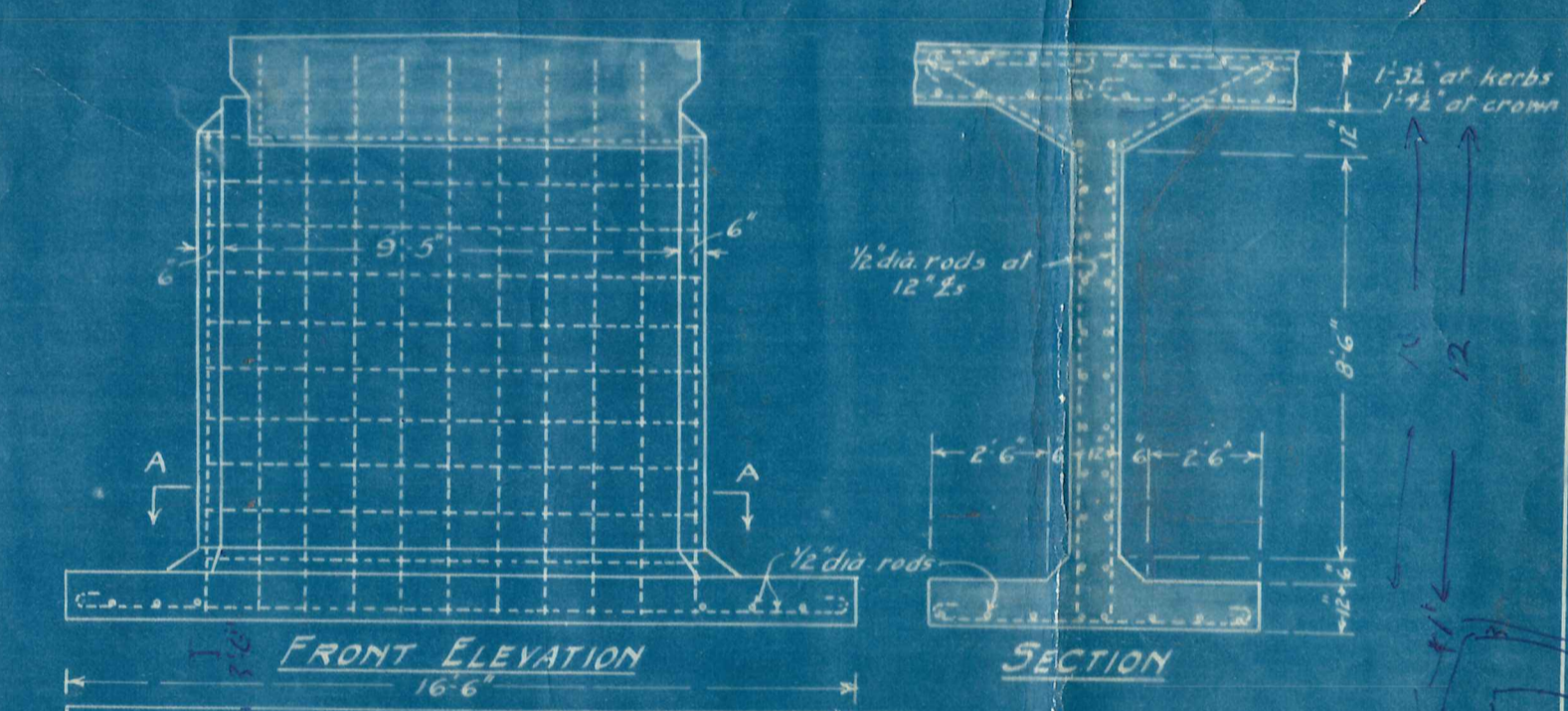
PLAN



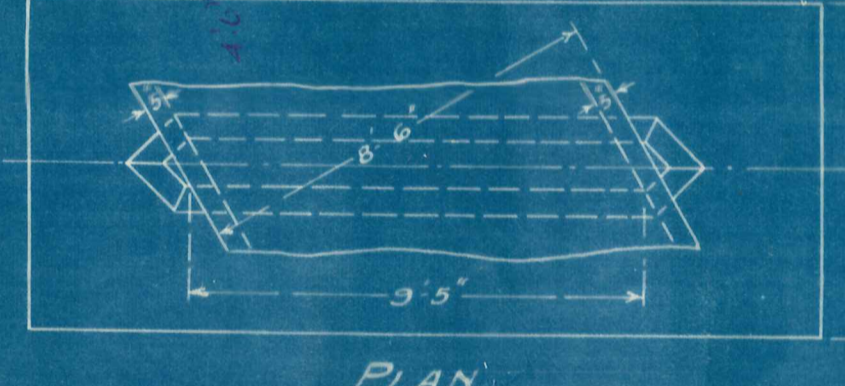
PLAN SCALE - 1 MILE TO AN INCH



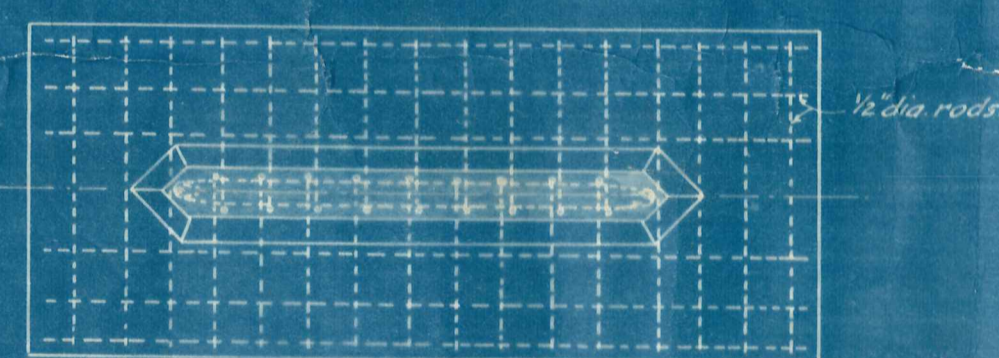
LOCALITY PLAN SCALE - 1 MILE TO AN INCH



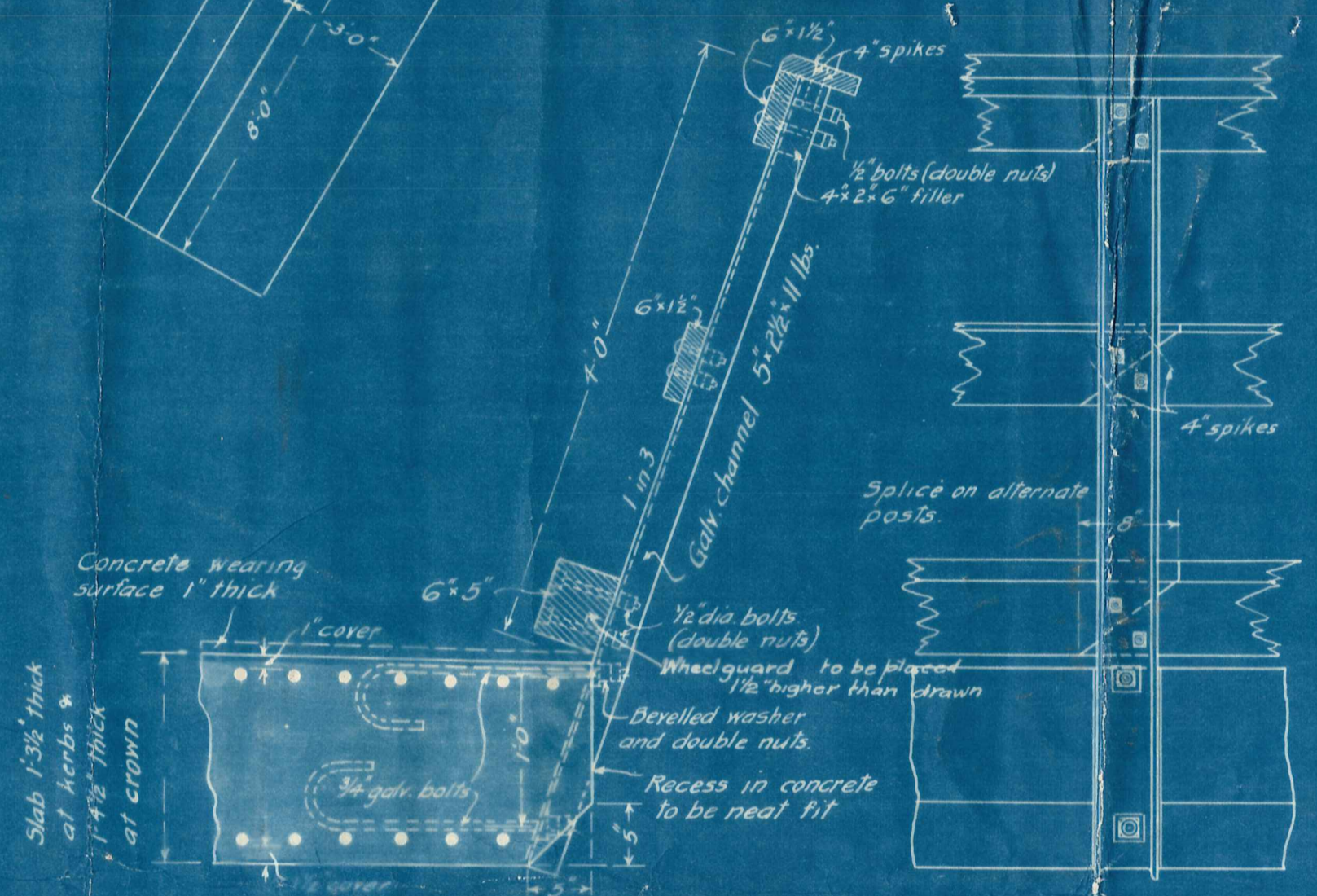
FRONT ELEVATION SECTION



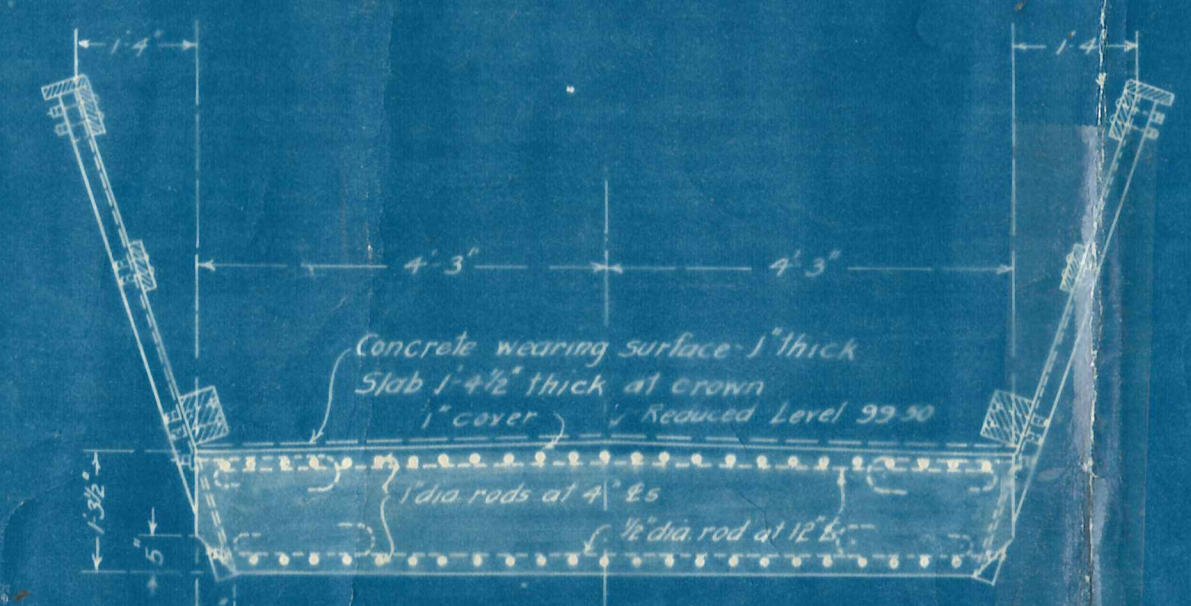
PLAN



SECTION A-A DETAILS OF PIER B



DETAILS OF HANDRAIL SCALE - 1 IN = 1 FT



SECTION SQUARE TO E OF ROADWAY SCALE - 1/2 IN = 1 FT

LONGITUDINAL SECTION
VERTICAL - 1/8 IN = 1 FT
SCALE - HORIZONTAL - 3/8 IN = 1 FT

HEIGHT ABOVE DATUM - 85 FT	1	2	3	4
TOP OF ROAD LEVEL	90.00	89.72	89.50	89.25
REDUCED LEVEL	5.00	4.72	4.50	4.25
DISTANCES IN FEET	12	26	22	58
PEG NOS	1	2	3	4

VICKERMAN AND LANCASTER WELLINGTON

THOMSONS CREEK BRIDGE
MATAKANUI - DAYBREAD ROAD

SCALE - 1/4 IN = 1 FT, (EXCEPT WHERE SHOWN OTHERWISE)

Drawn by	J.C.G.	19-11-29
Traced by	J.C.G.	
REFERENCE	DRAWING No	
92/16	776	