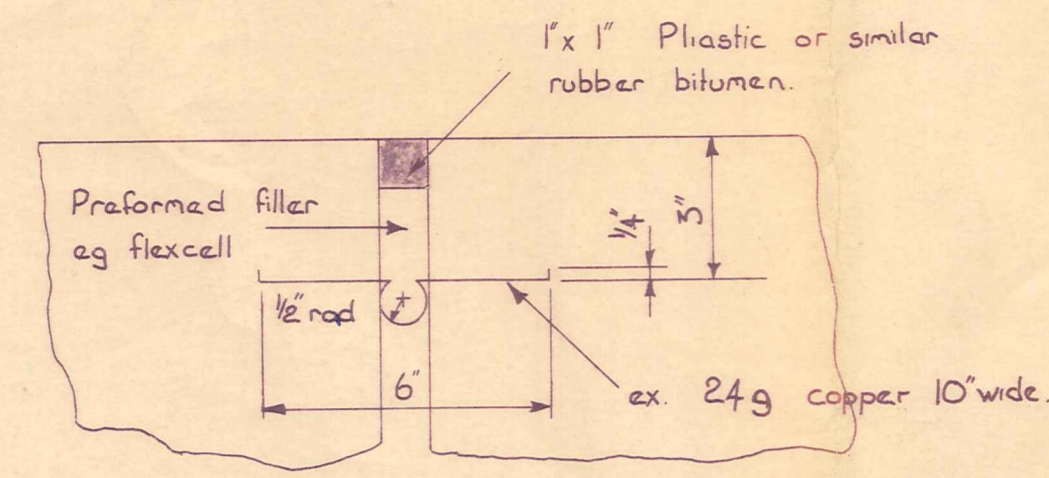
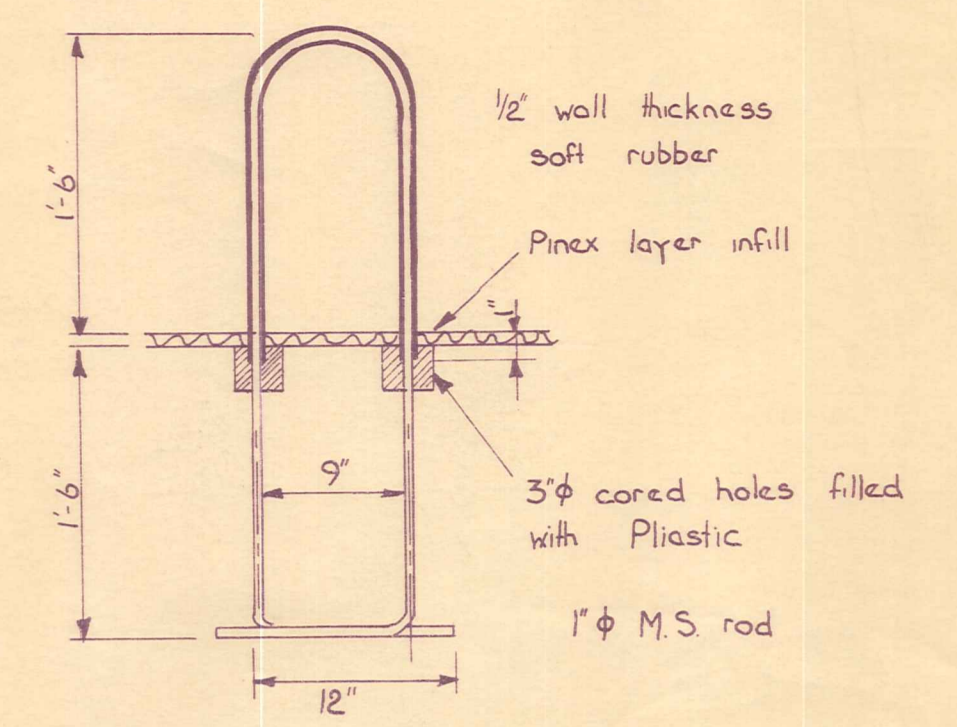


SITE PLAN
SCALE:- 40' TO 1"

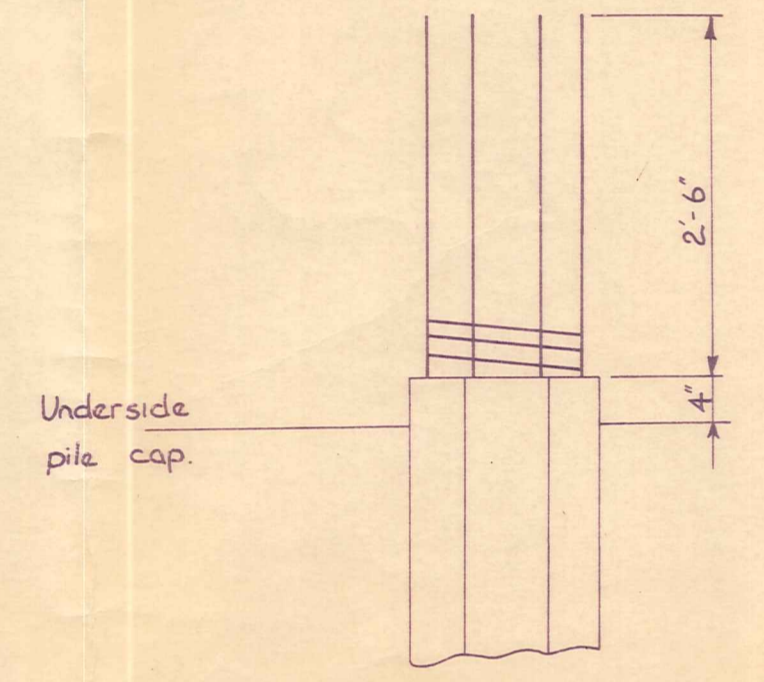


JOINT DETAIL AT DECK & ABUTMENTS



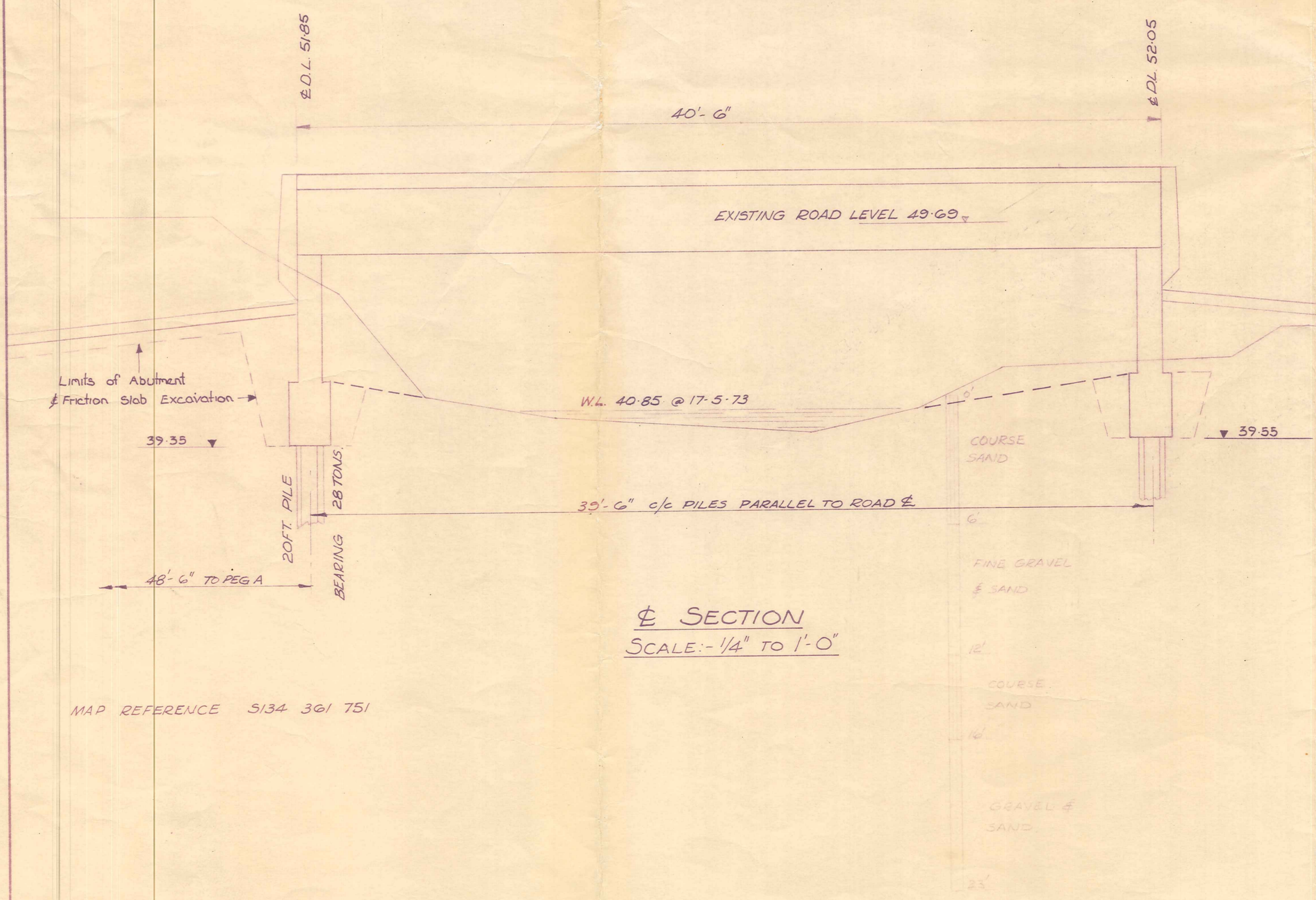
HOLDING DOWN ROD DETAIL
12 N° REQ'D

- PILE NOTES:**
- Minimum weight of Monkey shall be 4 tons
 - Piles 20ft to 30ft long may be slung from a single point located a distance 0.3L from the pile head
 - Approximate weights of piles
Nominal length 20' 25'
Weight in tons .186 2.35



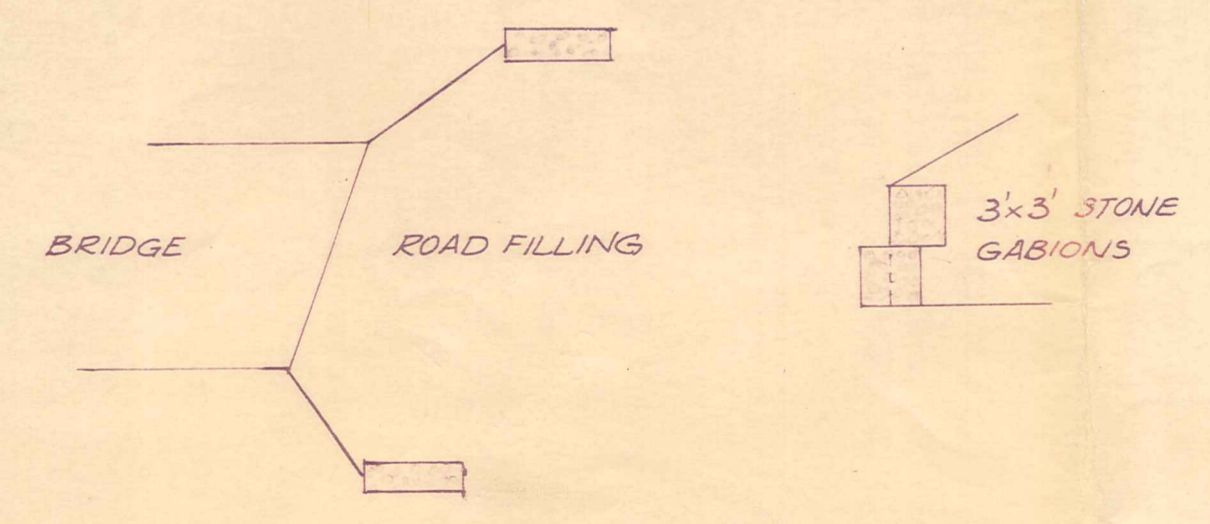
PILE HEAD STRIPPING DETAIL
Not to Scale.

Pile head to be completely stripped of concrete for the distance shown. Helical winding to be restored for three complete turns, & tied to pile rods.

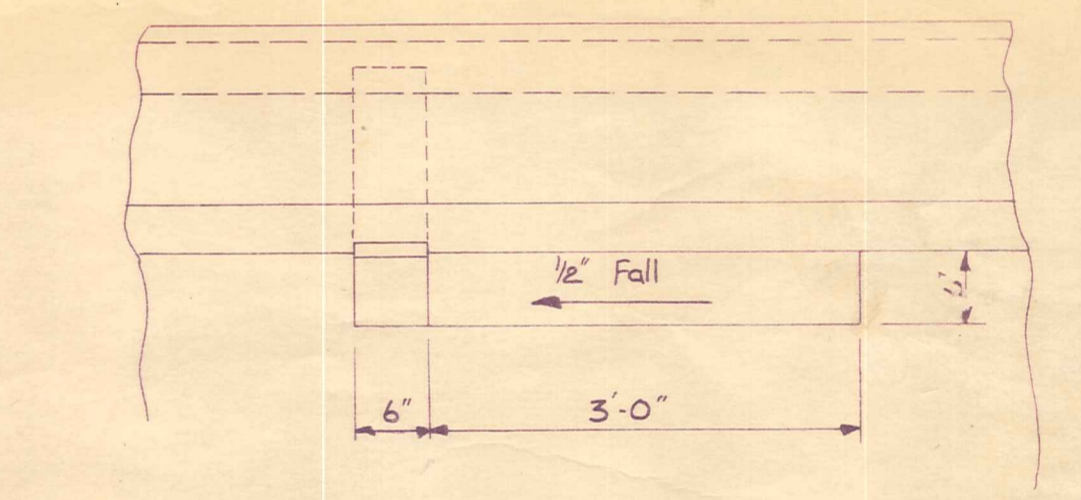


SECTION
SCALE:- 1/4" TO 1'-0"

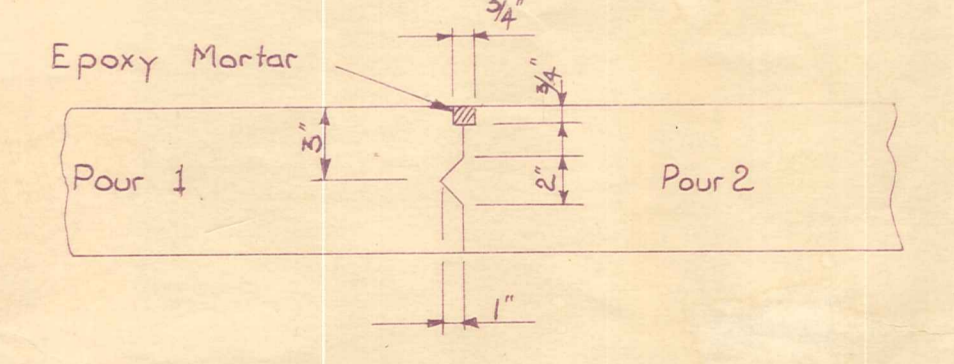
MAP REFERENCE 5134 361 751



STONE GABIONS AT ENDS OF WING WALLS
(NOT PART OF BRIDGE CONTRACT)



DRAIN PIPE INSTALLATION DETAILS
Not to Scale.
Drain pipes out of 6" x 4" x 1/4" R.H.S. See sheet 2 for positions.



DECK CONSTRUCTION JOINT IF REQ'D

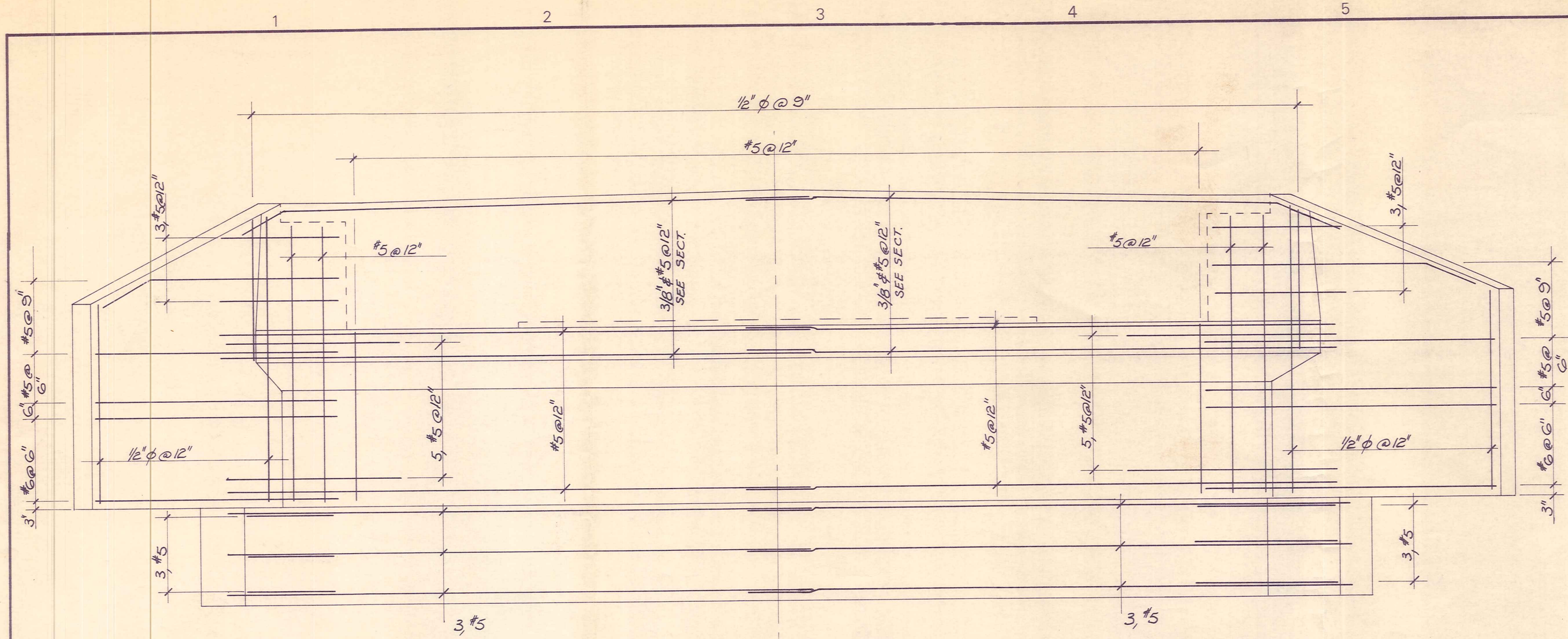
DUFFILL WATTS & KING
CONSULTING CIVIL & STRUCTURAL ENGINEERS
Dunedin P.O. Box 5269, Ph. 77 240 Invercargill P.O. Box 576, Ph. 3049
Christchurch 138 Clyde Rd, Ph. 815 801

VINCENT COUNTY COUNCIL

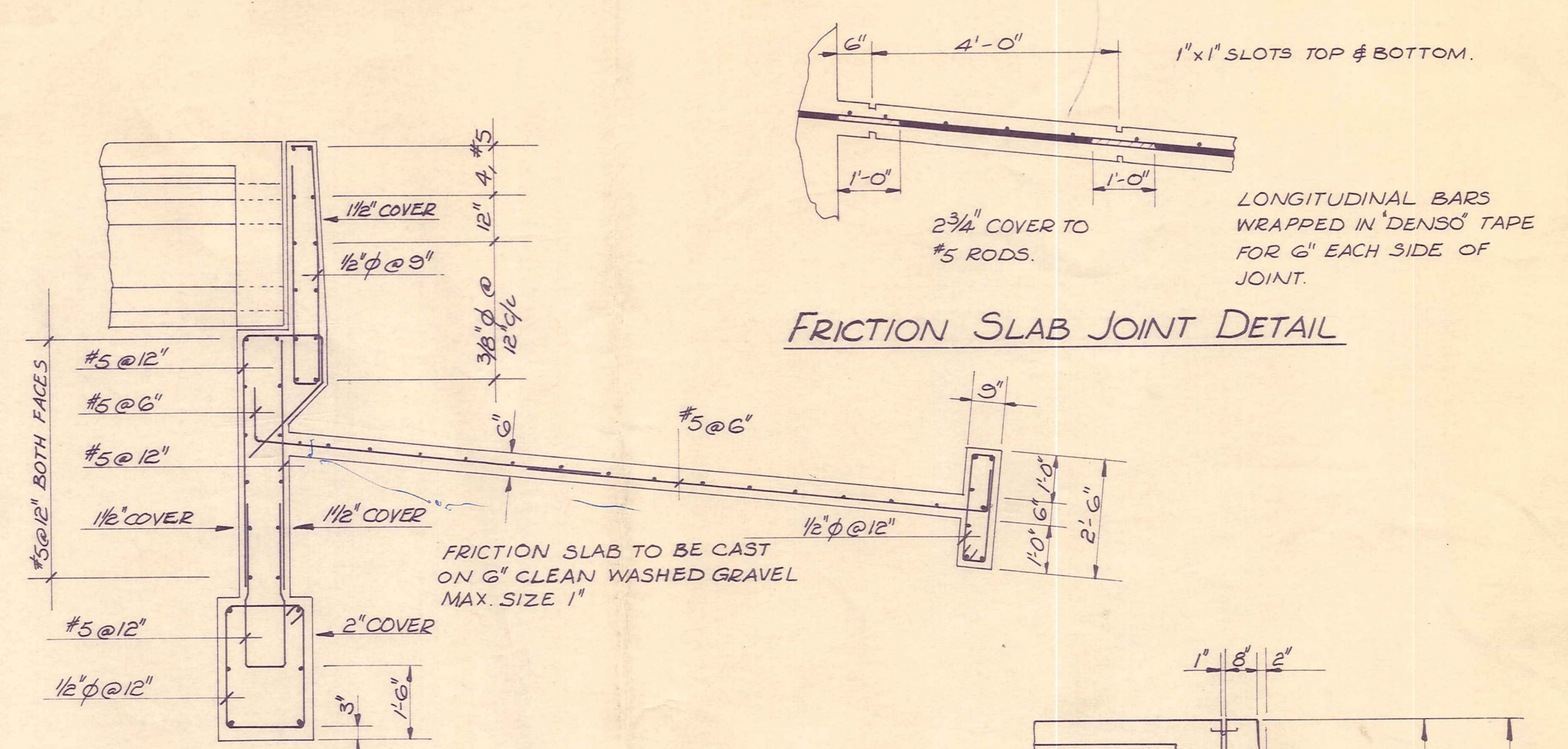
THOMSONS CREEK BRIDGE
GLASSFORD ROAD

AMENDMENTS			NAME	DATE	JOB NO.	Sheet No.
NO	BY	DATE	Appvd	Surveyed	7282	1 of 4 sheets
				Drawn		
				Calculations		
				Traced		
				Checked		
				Approved	File B/2	L.B.

ORIGINAL SIZE INCHES
0 1 2 3 4 5 6 7 8 9 10 11 12
50 100 200

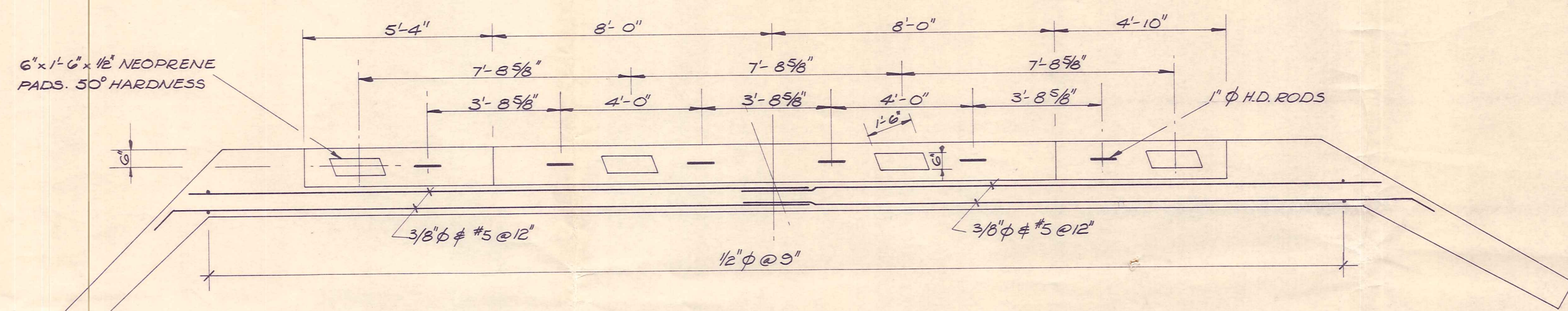


ABUTMENT ELEVATION
EARTH FACE STEEL

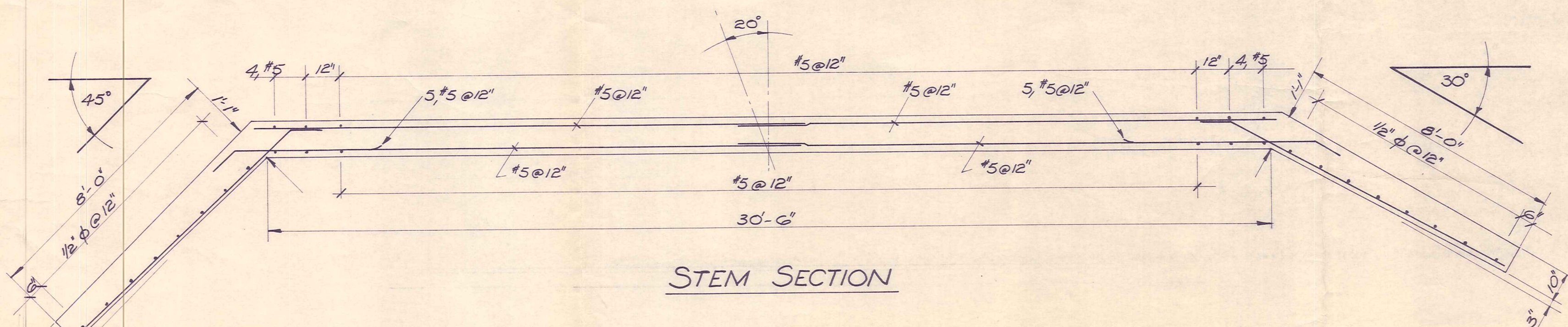


FRICION SLAB JOINT DETAIL

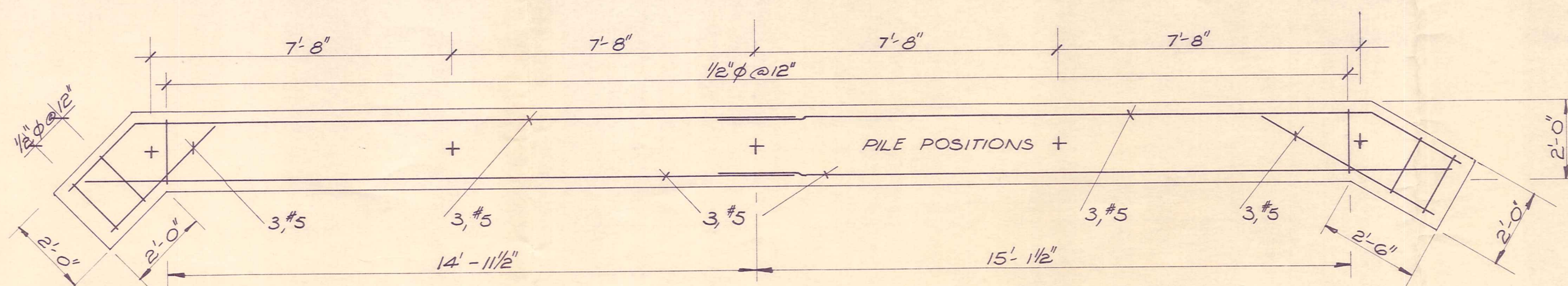
SECTION



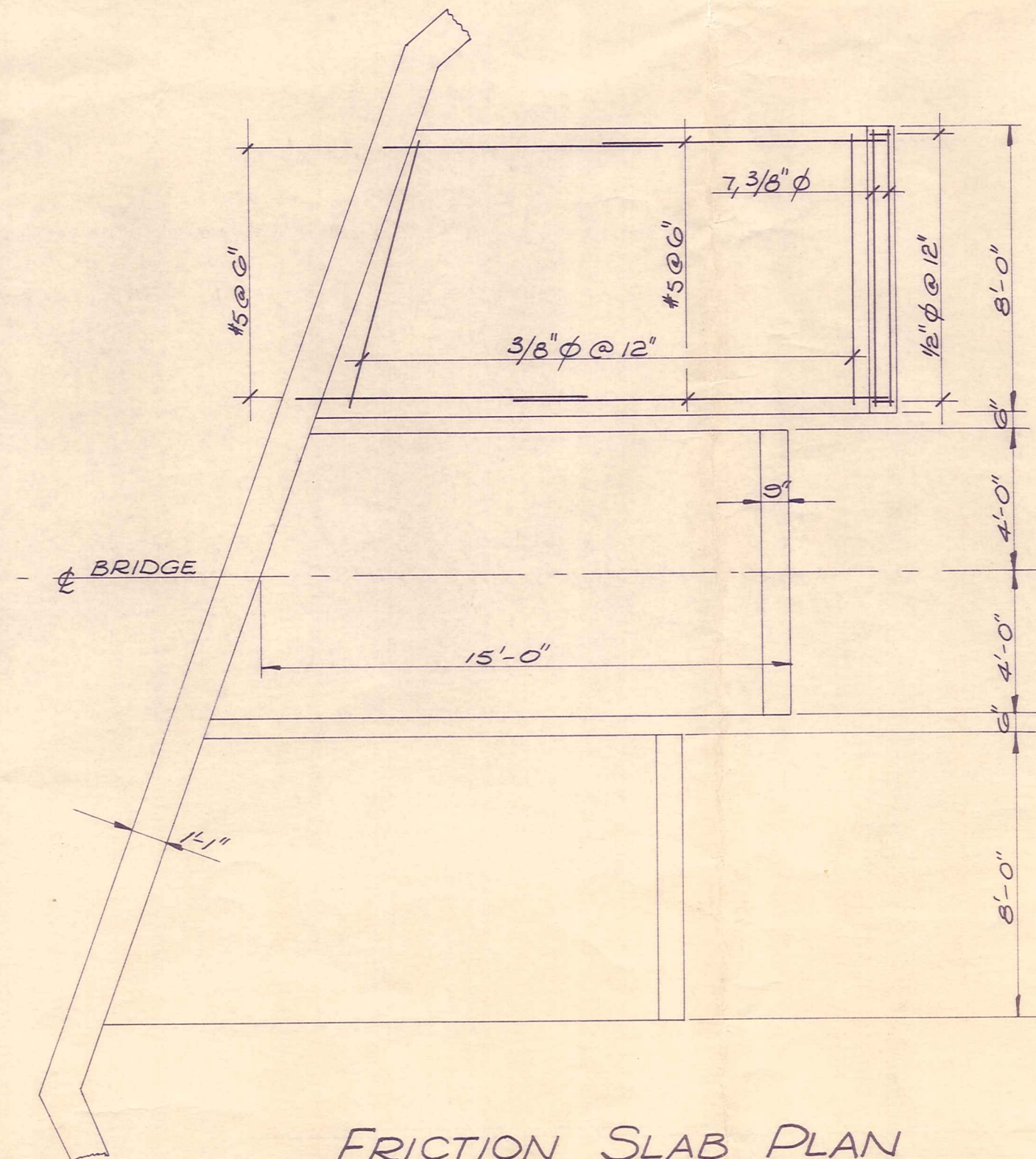
BACK WALL SECTION



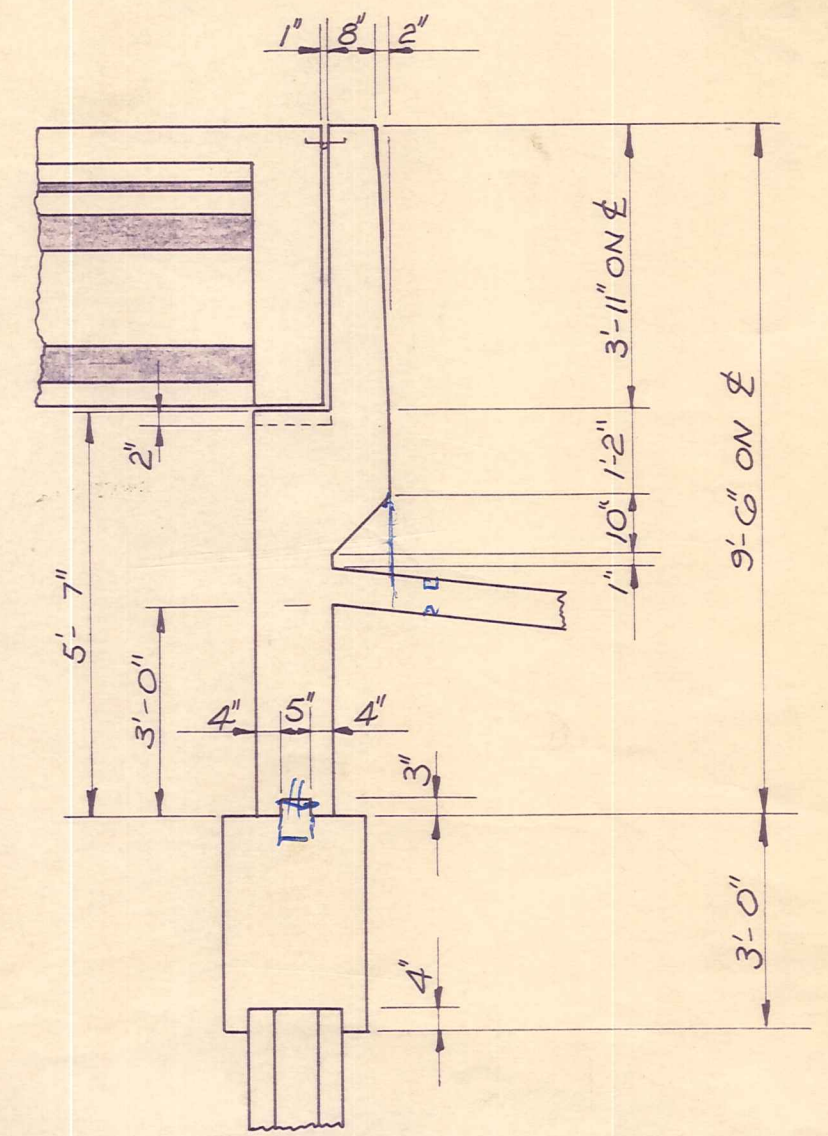
STEM SECTION



PILE CAP PLAN
SCALE: 3/8" TO 1'-0"



FRICION SLAB PLAN
SCALE: 1/4" TO 1'-0"



SECTION
SQUARE TO ABUT.

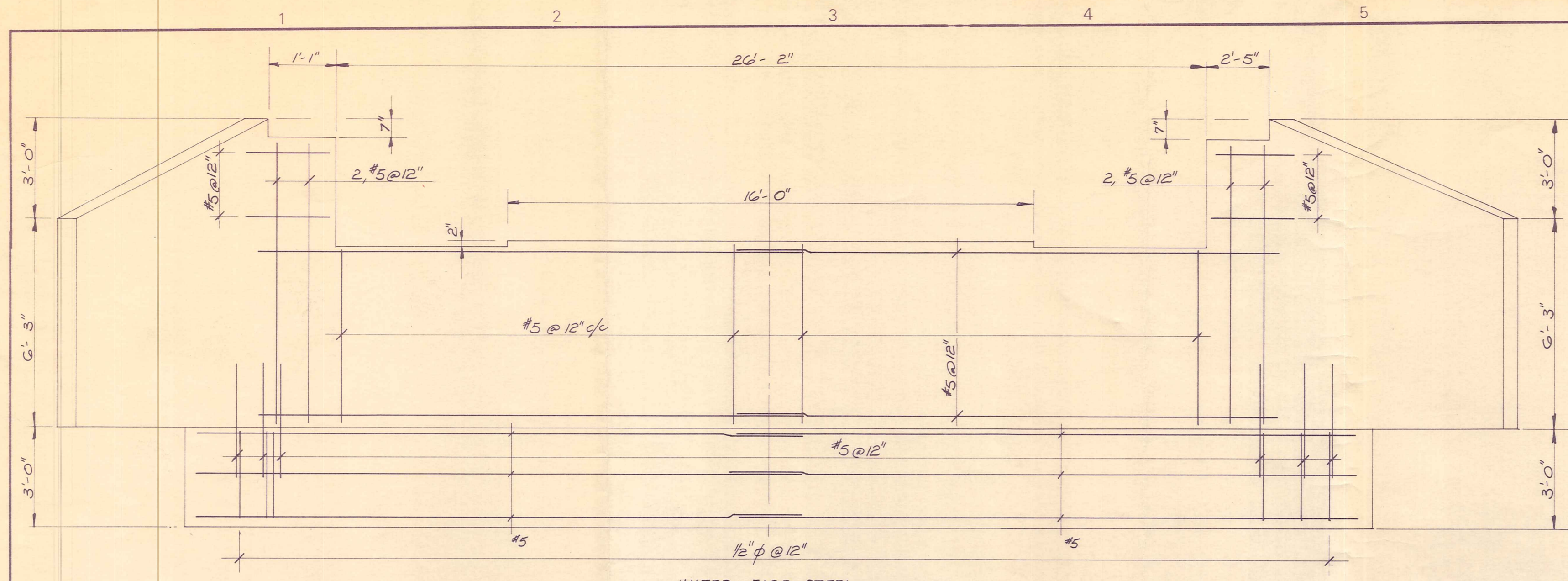
ORIGINAL SIZE mm INCHES
300
200
100
0
30
20
10
0
3
4
5
6
7
8
9
10
11
12

DUFFILL WATTS & KING
CONSULTING CIVIL & STRUCTURAL ENGINEERS
Dunedin P.O. Box 5269 Ph. 77-2431 Invercargill P.O. Box 576 Ph. 3049
Balclutha P.O. Box 220 Phone 1425

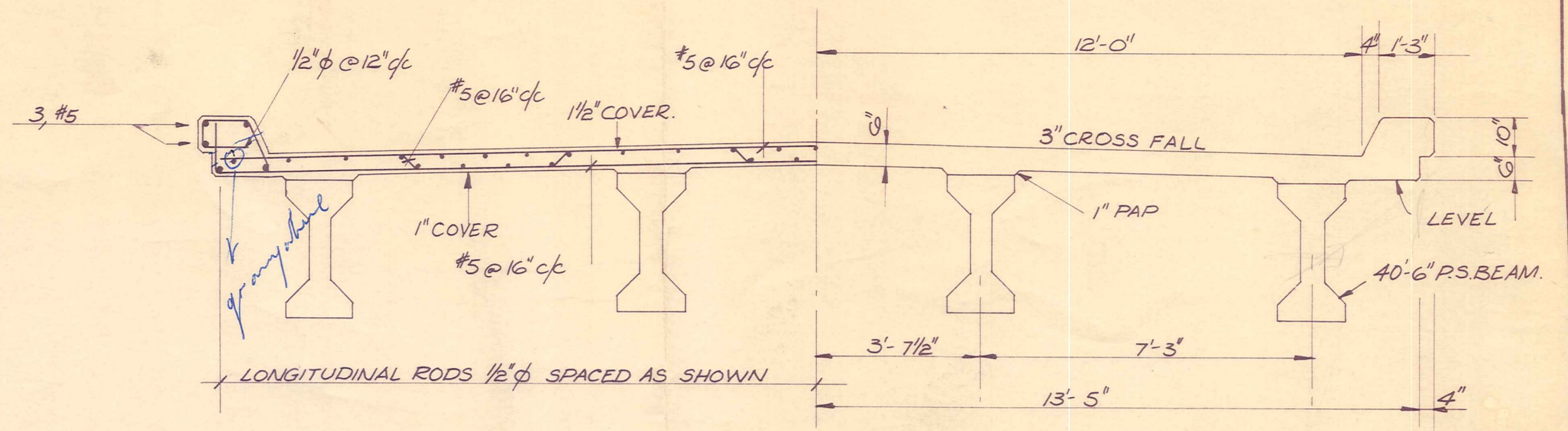
VINCENT
COUNTY COUNCIL

THOMSONS CREEK BRIDGE
GLASSFORD ROAD

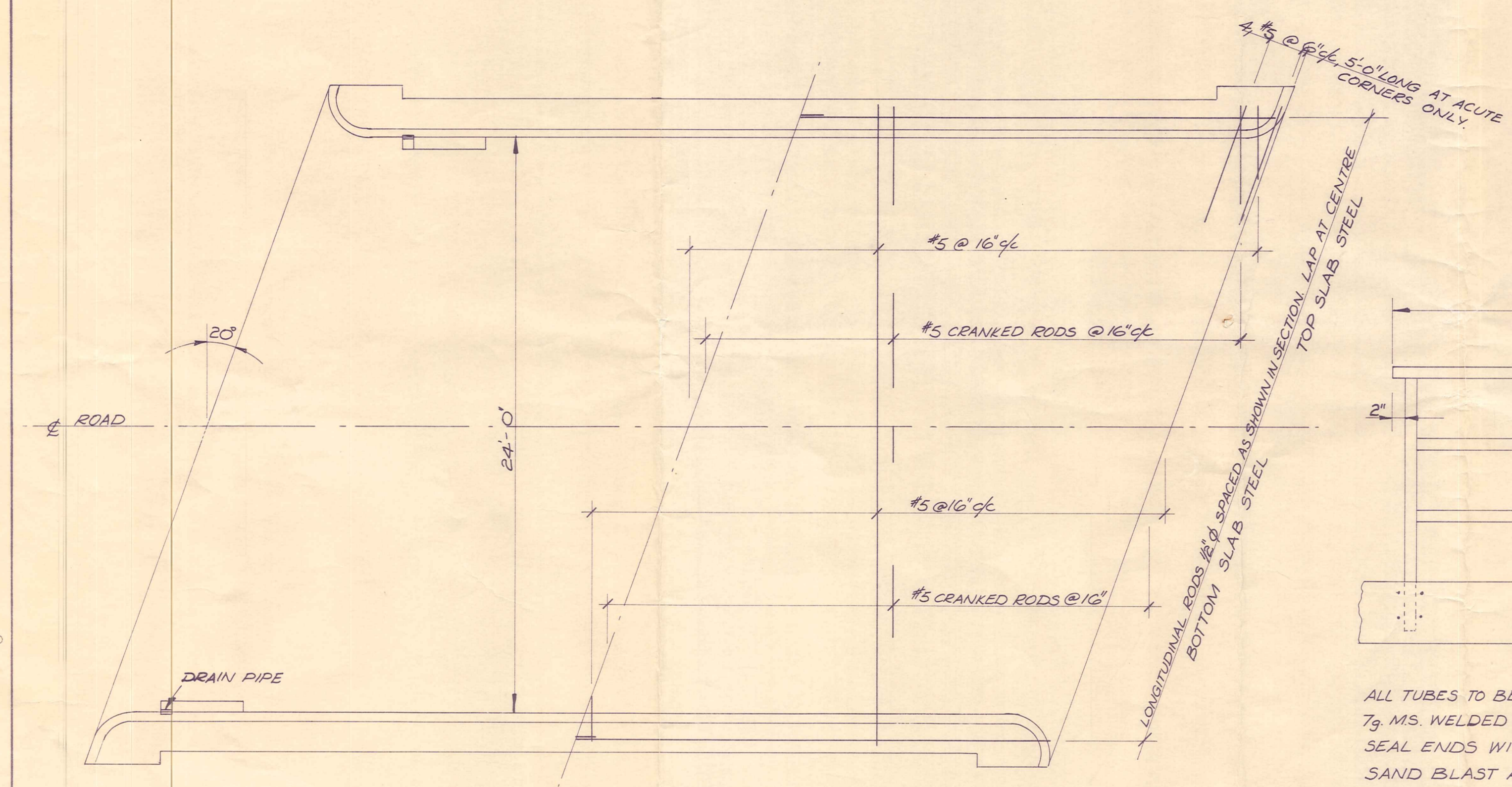
AMENDMENTS			NAME		DATE	JOB NO.	Sheet No.	
NO.	BY	DATE	Appvd.	Surveyed		7282	2	
				Drawn	RTSMITH			Aug 73
				Calculations	BB. NICHOLSON			
				Traced	R.T. SMITH			
				Checked				
				Approved				
						File B/2	L.B.	F.B.



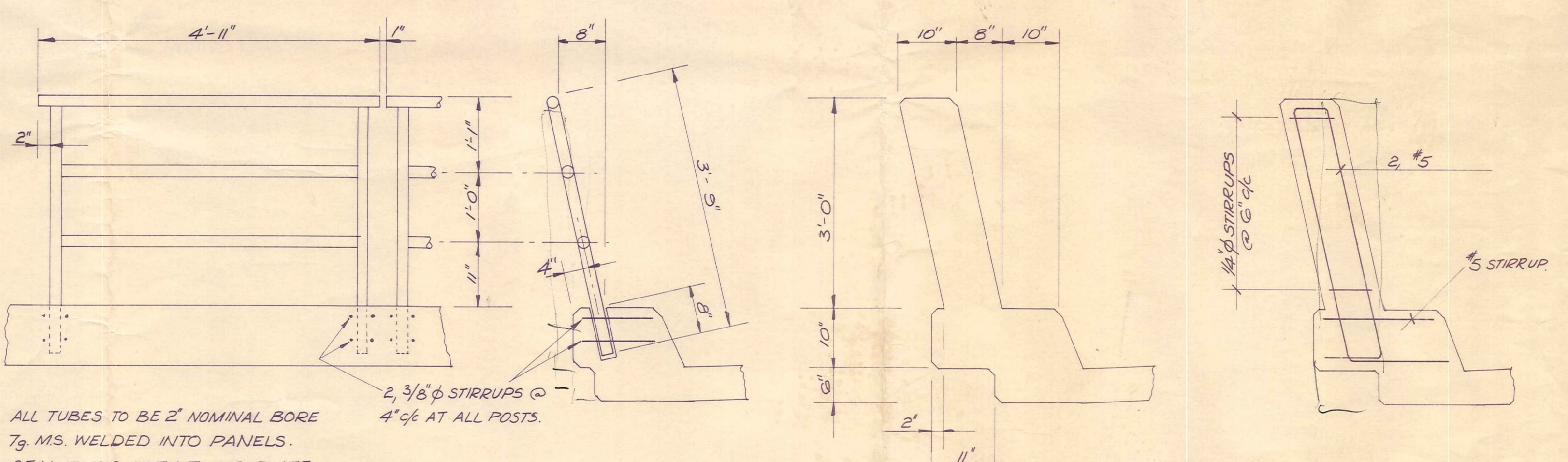
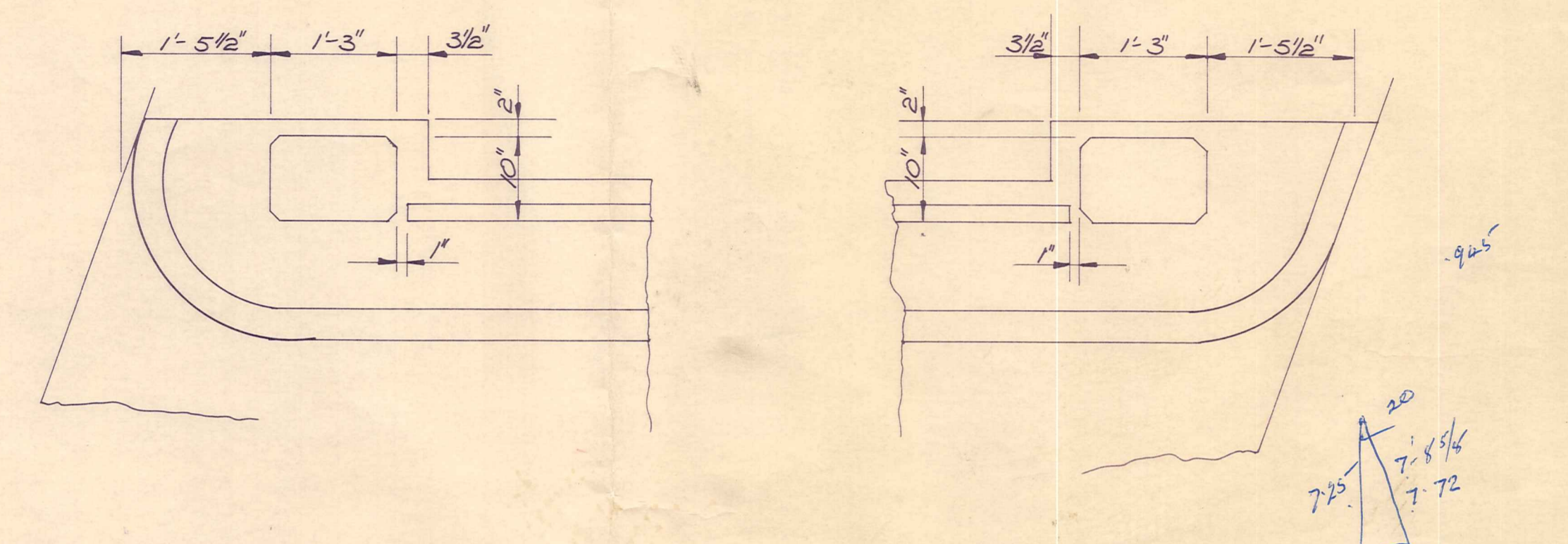
WATER FACE STEEL
ABUTMENT ELEVATION



DECK SECTION NORMAL TO ROAD
SCALE: 3/8" TO 1'-0"

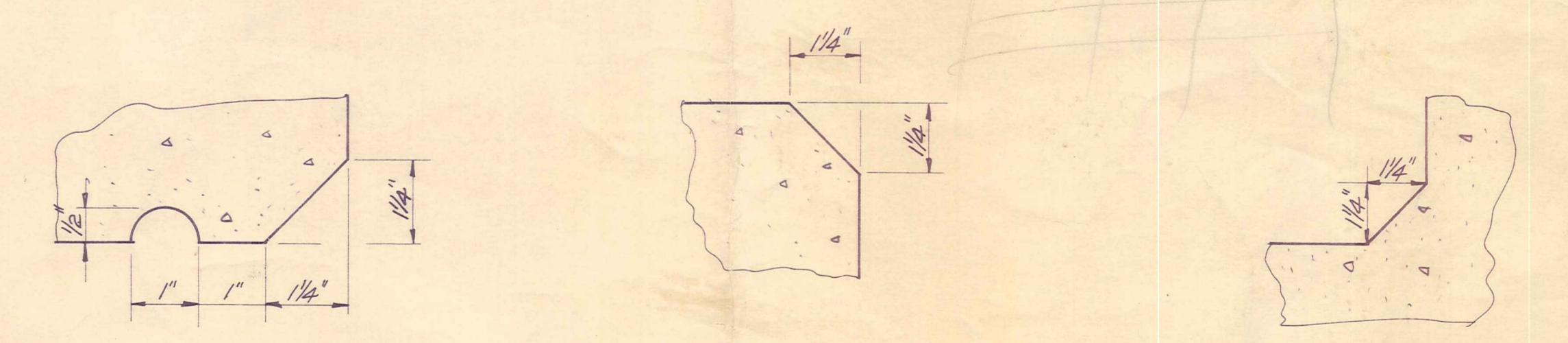


DECK PLAN
SCALE: 1/4" TO 1'-0"



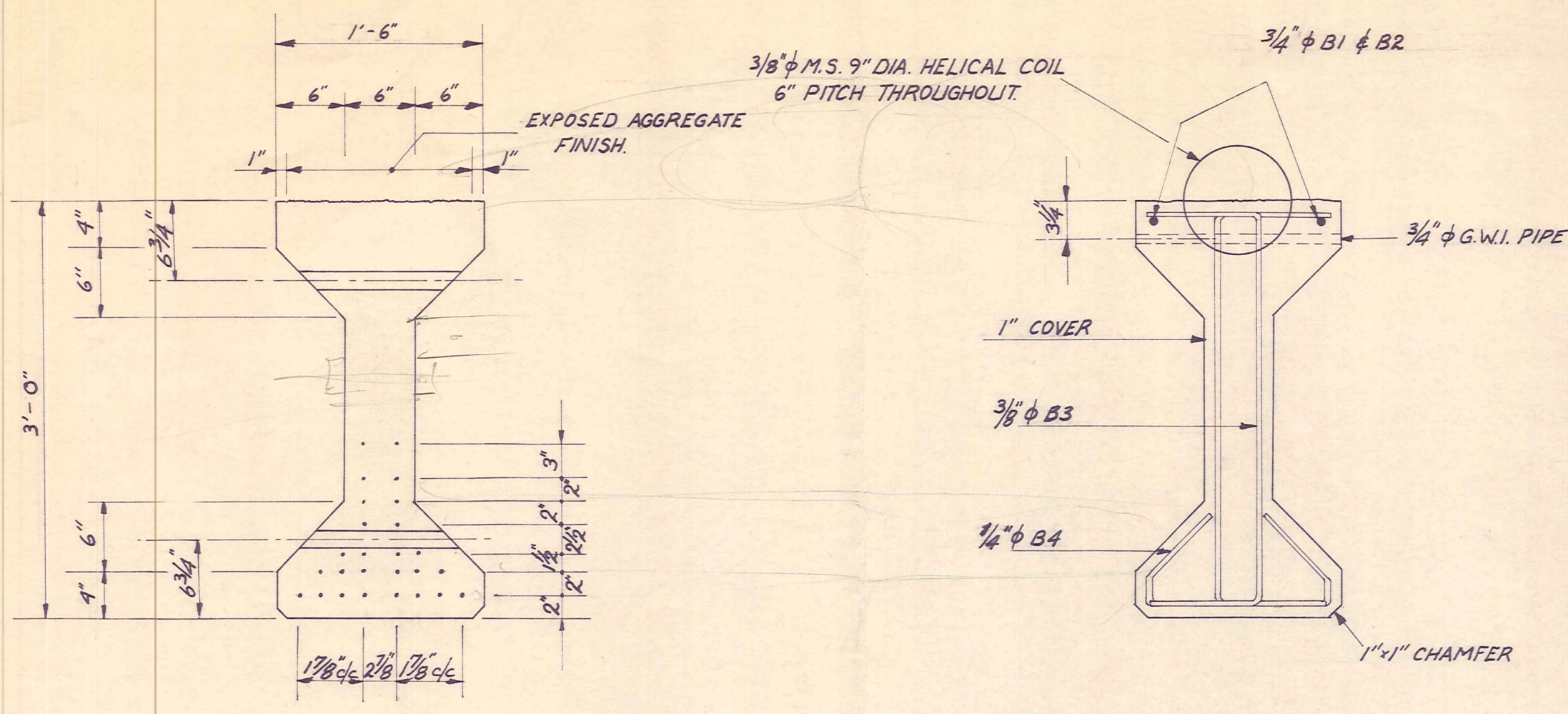
END POST & HANDRAIL DETAILS
SCALE: 3/4" TO 1'-0"

NOTES.
DESIGN LOADING H20 SIG TIG
CONCRETE 3000 P.S.I. AT 28 DAYS
REINFORCING 3/8" φ # ABOVE TO NZS.1693
1/2" φ # BELOW TO NZS.197.
MIN LAP 30 DIA. FOR DEFORMED BARS
40 DIA. FOR PLAIN BARS.
COVER TO STEEL 1 1/2" UNLESS OTHERWISE SPECIFIED.

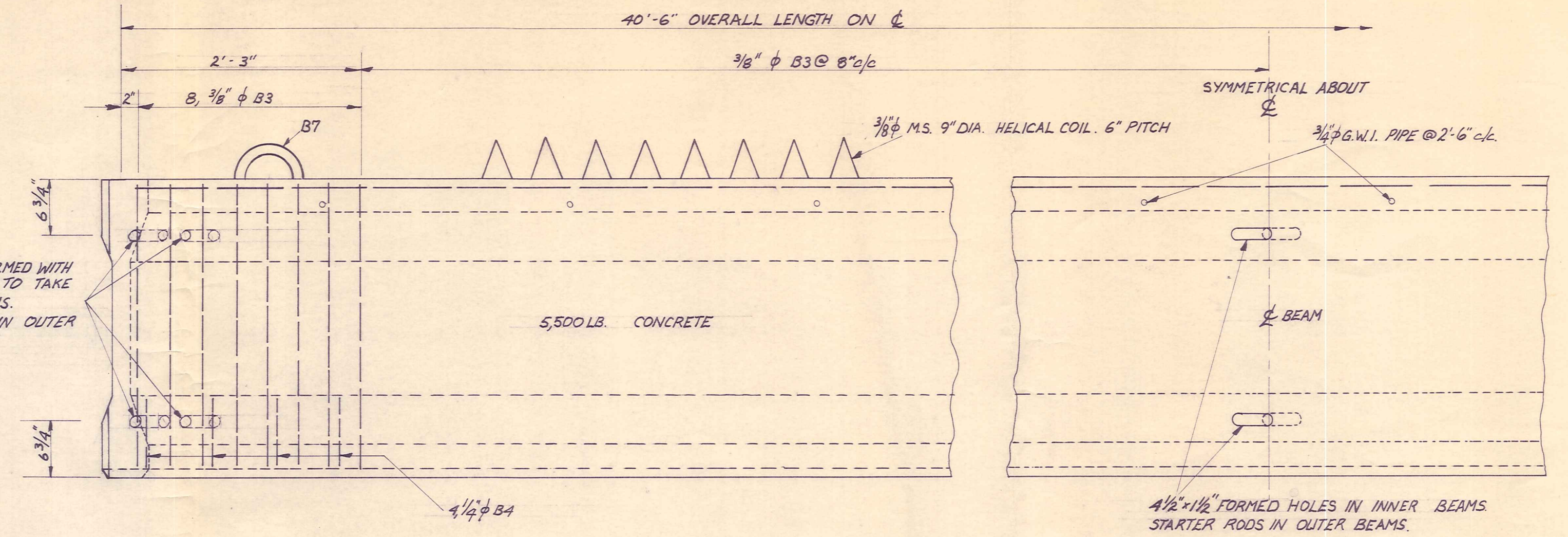


DRIP DETAIL
CHAMFER & FILLET DETAILS
NOT TO SCALE.

DUFFILL WATTS & KING CONSULTING CIVIL & STRUCTURAL ENGINEERS Dunedin P.O. Box 5269 Ph: 77 2431 Invercargill P.O. Box 576 Ph: 3049 Balclutha P.O. Box 220 Phone 1425	VINCENT COUNTY COUNCIL	THOMSONS CREEK BRIDGE GLASSFORD ROAD		AMENDMENTS		NAME	DATE	JOB NO.	Sheet No.
				NO.	BY	DATE	Appvd.	Surveyed	GR DUFF
						Drawn	RT.S.	Aug. 73	of 4 sheets
						Calculations	B.B. NICHOLSON		
						Traced	R.J. Smith		
						Checked			
						Approved	B.B. Nicholson	Sept '73	File B/2 L.B. F.B.

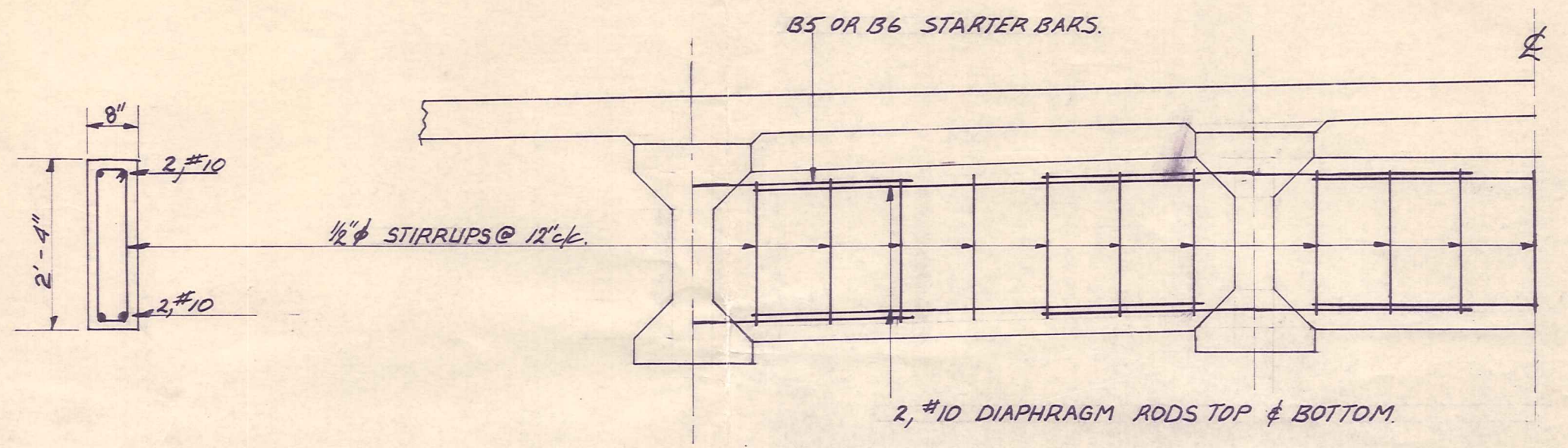


26, 3/8" φ STRANDS, INITIAL TENSIONING FORCE PER 3/8" φ STRAND 14,700 LBS.
 TYPICAL PRETENSIONED BEAM SECTIONS OVERALL LENGTH 40'-6"
 SCALE: 1" TO 1'-0"



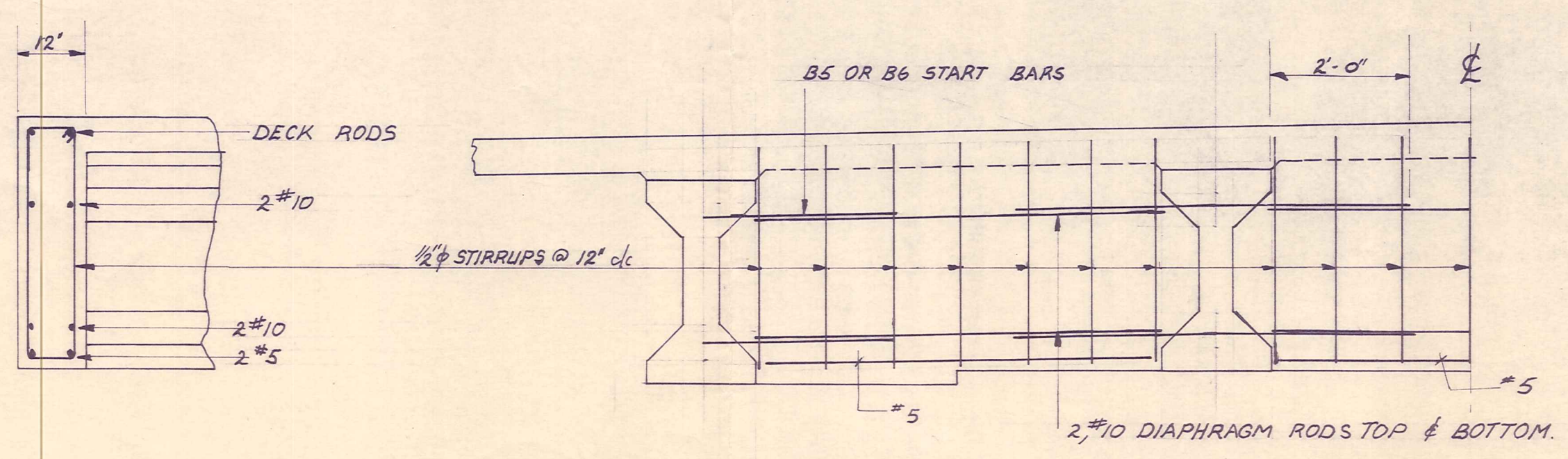
PLAN & ELEVATION OF BEAM
 SCALE: 1" TO 1'-0"

AFTER WIRES CUT OFF AND GROUND FLUSH, END OF BEAM TO BE GIVEN 2 COATS OF EPOXY RESIN OR SIMILAR APPROVED COATING.

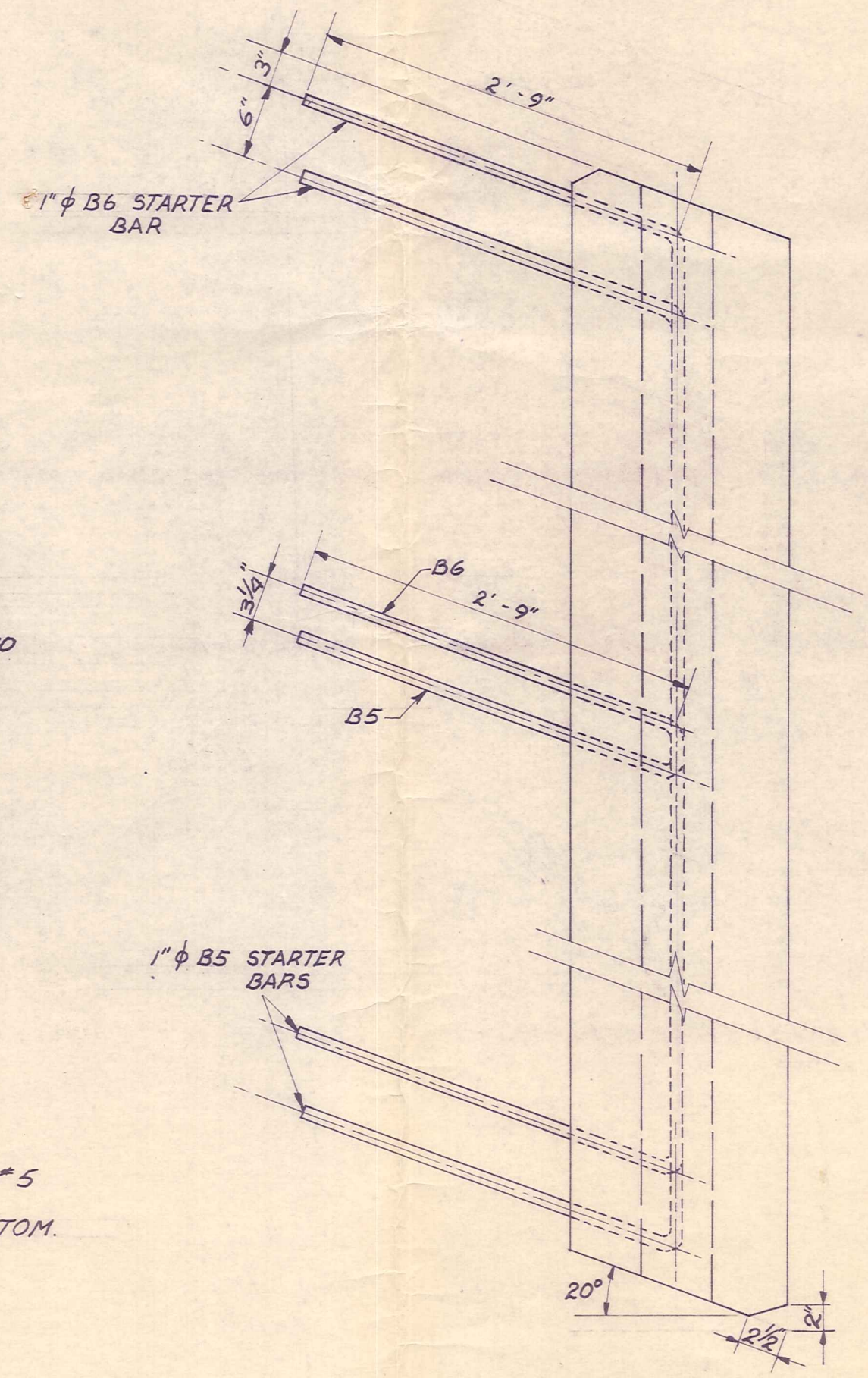


HALF SECTION AT MID-SPAN DIAPHRAGM
 SCALE: 1/2" TO 1'-0"

#10 RODS TOP & BOTTOM, LAP AS SHOWN. RODS THROUGH INTERIOR BEAMS MAY FOR CONVENIENCE BE PLACED LOOSELY PRIOR TO LIFTING BEAMS INTO POSITION.



HALF SECTION AT END DIAPHRAGMS
 SCALE: 1/2" TO 1'-0"



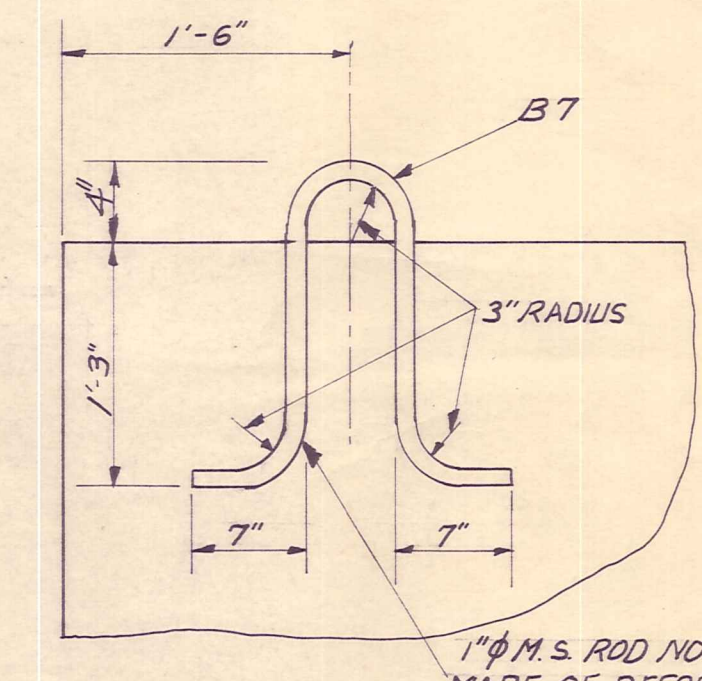
STARTER BARS IN OUTER BEAMS

BREADTH & DEPTH OVERALL LENGTH HORIZONTAL DEFLECTION VERTICAL DEFLECTION (HOGGING) STRANDS SHALL BE PLACED WITHIN A MAX. TOLERANCE OF 1/16"

± 1/8" + 1/8" - 3/8" BEFORE TRANSFER
 3/16" 3/8" = 1/8"

PERMISSIBLE TOLERANCE FOR BEAMS AT TIME OF STRIPPING

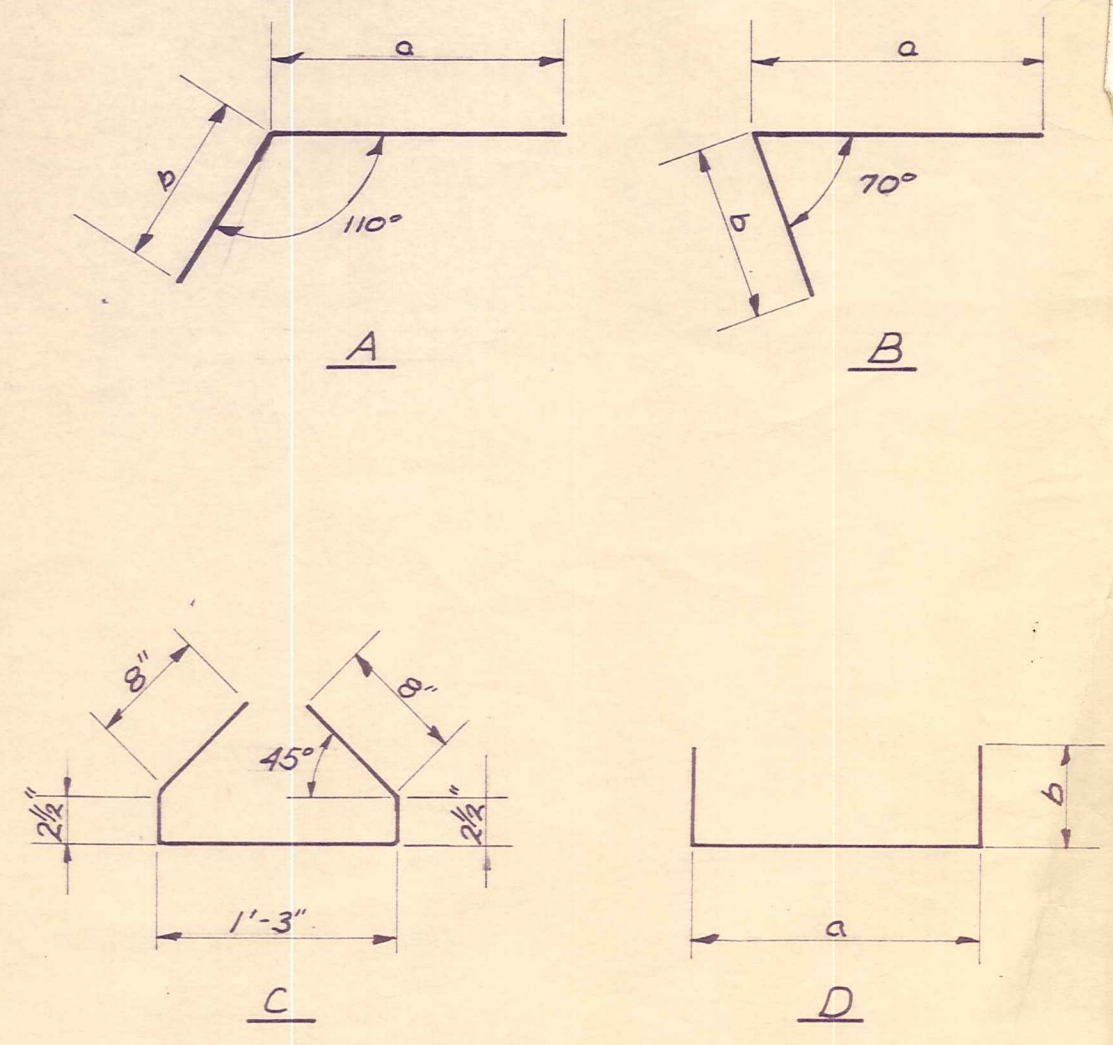
CONCRETE DESIGN STRESSES
 CYLINDER STRENGTH AT 28 DAYS = 5,500 PSI
 CYLINDER STRENGTH AT TRANSFER = 5,000 PSI



LIFTING EYE DETAIL

MARK	DIA.	TYPE	NO OFF	'a'	'b'	CUT LENGTH
B1	3/4"	A	8	1'-6"	21'-0"	22'-6"
B2	3/4"	B	8	1'-6"	21'-0"	22'-6"
B3	3/8"	D	552	9"	2'-9"	4'-2"
B4	1/4"	C	32	SEE DIAGRAM	2'-10"	
B5	1"	A	24	2'-9"	2'-3"	5'-0"
B6	1"	B	24	2'-9"	2'-3"	5'-0"
B7	1"		8	LIFTING EYE	4'-3"	
				3/8" φ HELICAL COIL WIRE		800'

STEEL SCHEDULE FOR FOUR BEAMS



BENDING DIAGRAMS