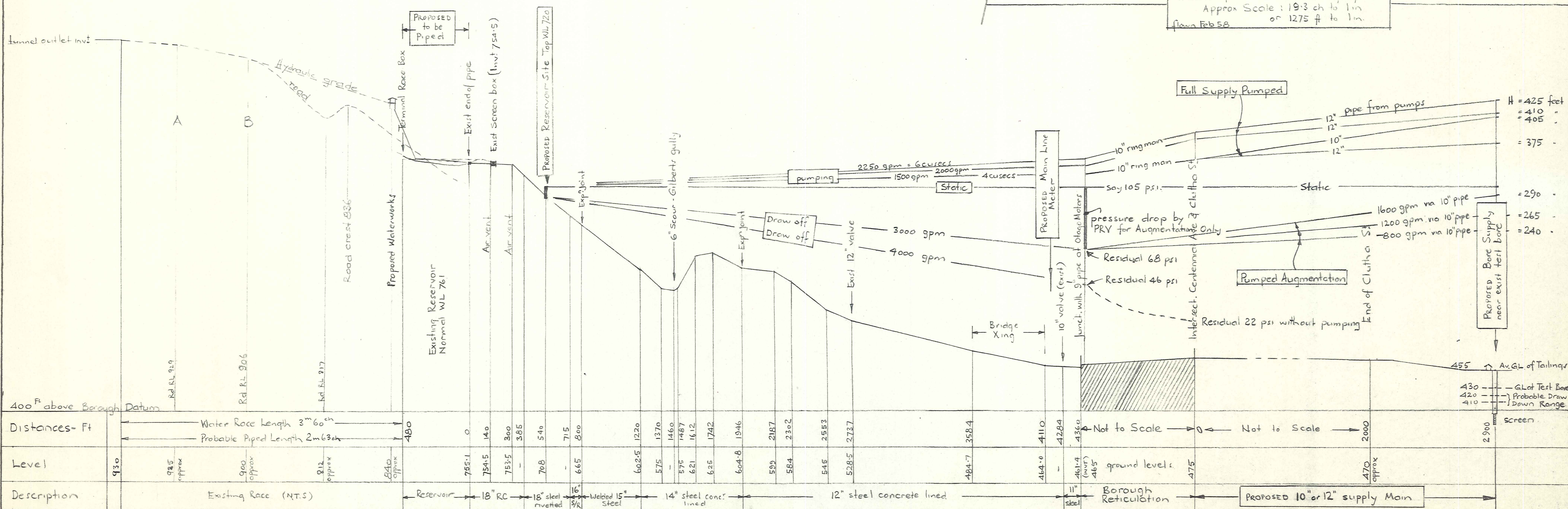


Note: MOW Highway Datum = Bor Datum + 36'

Traced from Aerial Photographs  
Approx Scale 14.2 ch to 1 in  
or 940 ft to 1 in  
flown Mar 1949

Traced from Aerial Photographs  
Approx Scale 19.3 ch to 1 in  
or 1275 ft to 1 in  
flown Feb 58



1962 WATER REPORT

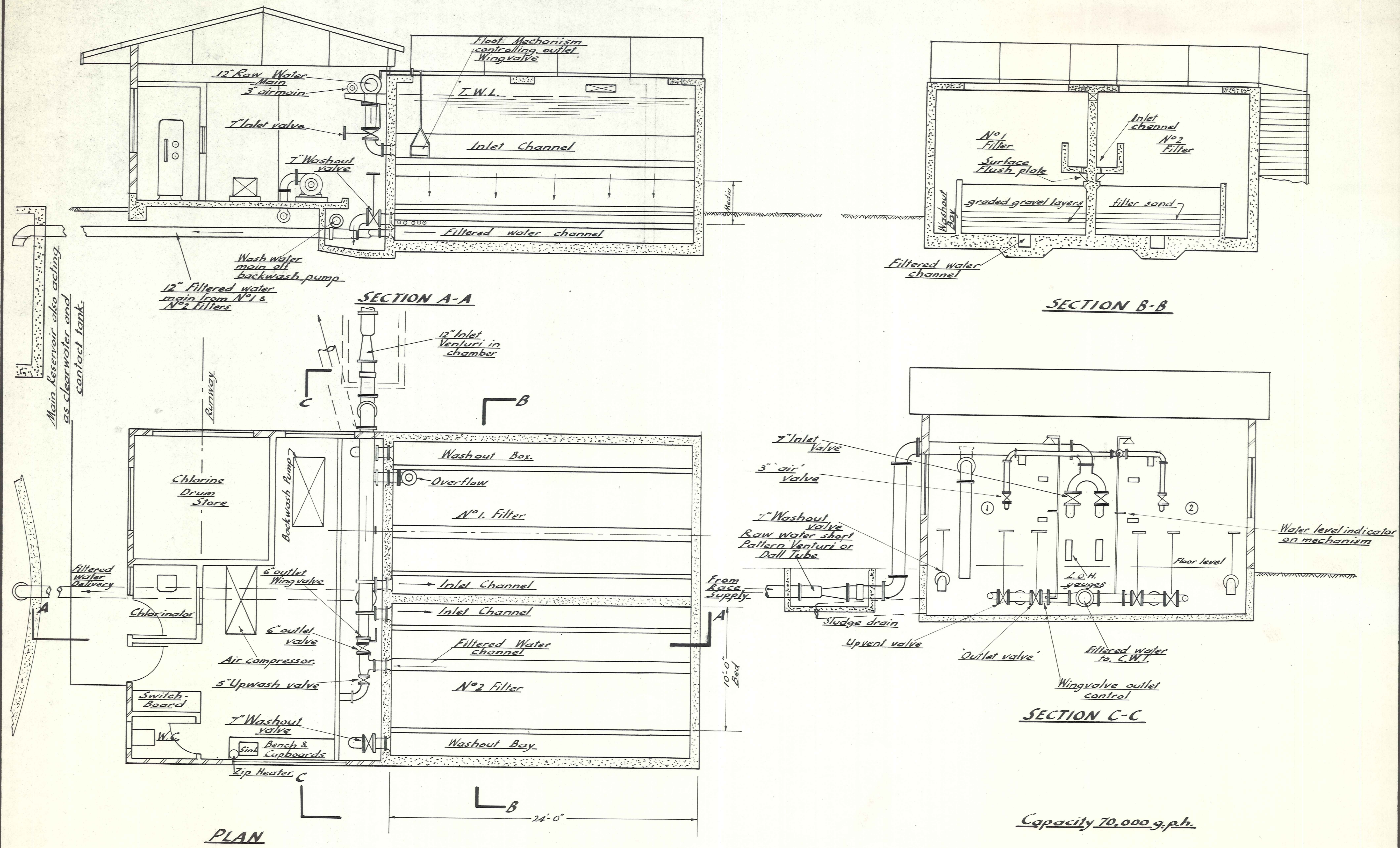
ALEXANDRA BOROUGH COUNCIL

WATER TREATMENT & AUGMENTATION 1962

DUFFILL, WATTS & KING  
CIVIL ENGINEERS AND SURVEYORS  
DUNEDIN and INVERCARGILL

Scale: Horiz. 400 Ft to 1 in. (Part only)  
Vert. 80 Ft to 1 in.

DESIGNED BY	DATE	JOB NO.
CHECKED BY	DATE	4211/1
TRACED BY	DATE	



1962 WATER REPORT

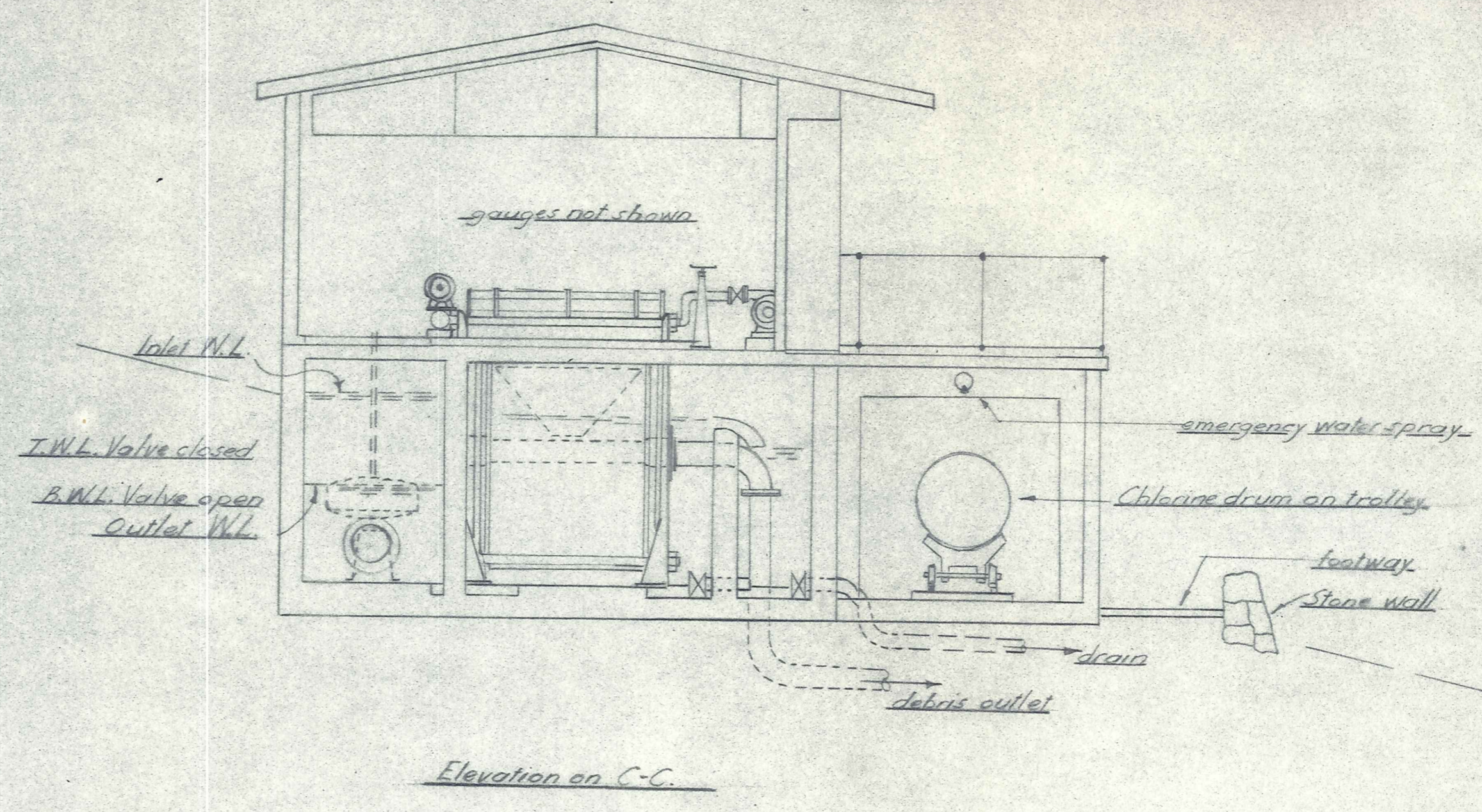
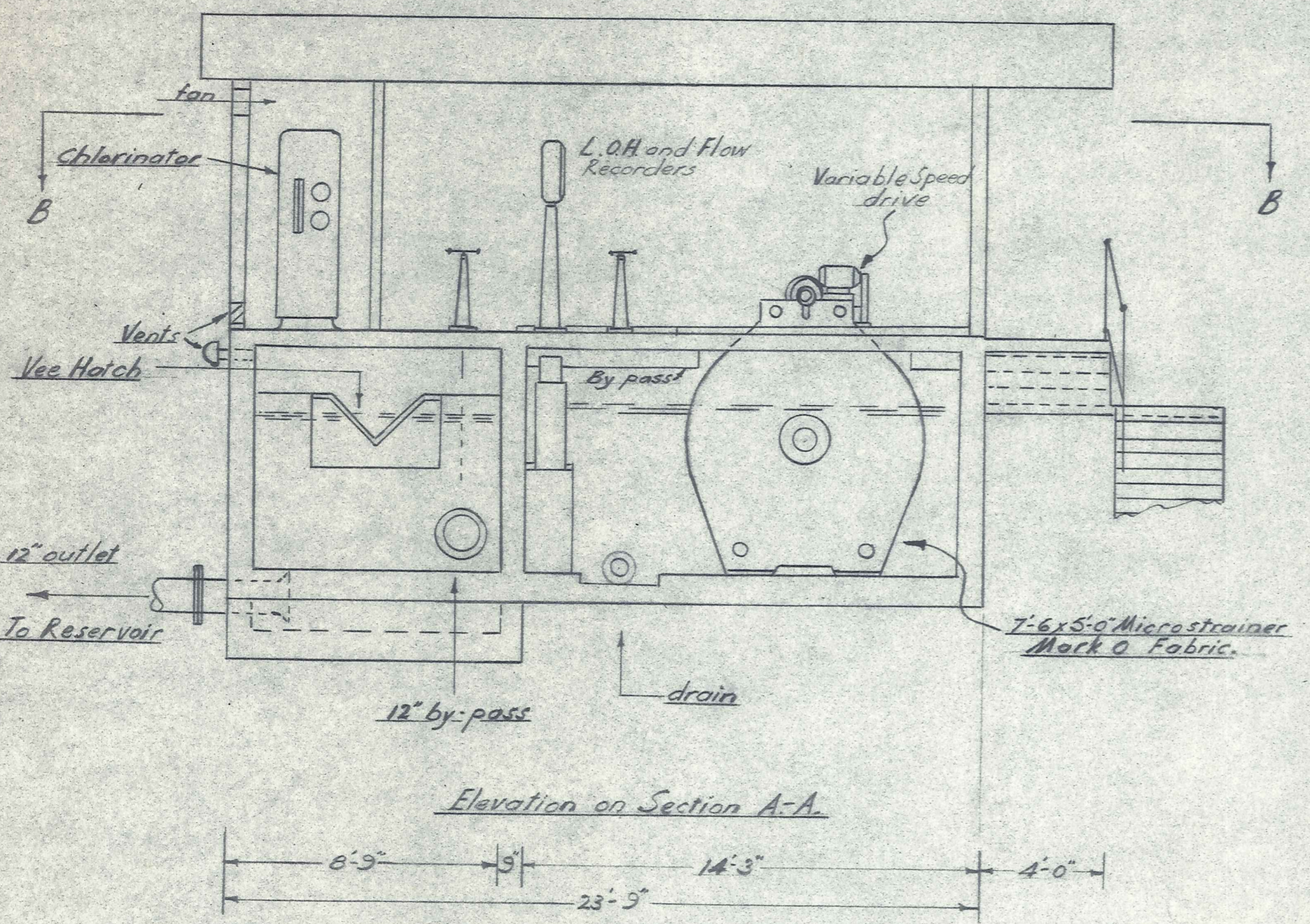
ALEXANDRA BOROUGH COUNCIL

POSSIBLE FILTER PLANT  
BUTCHER'S DAM SUPPLY

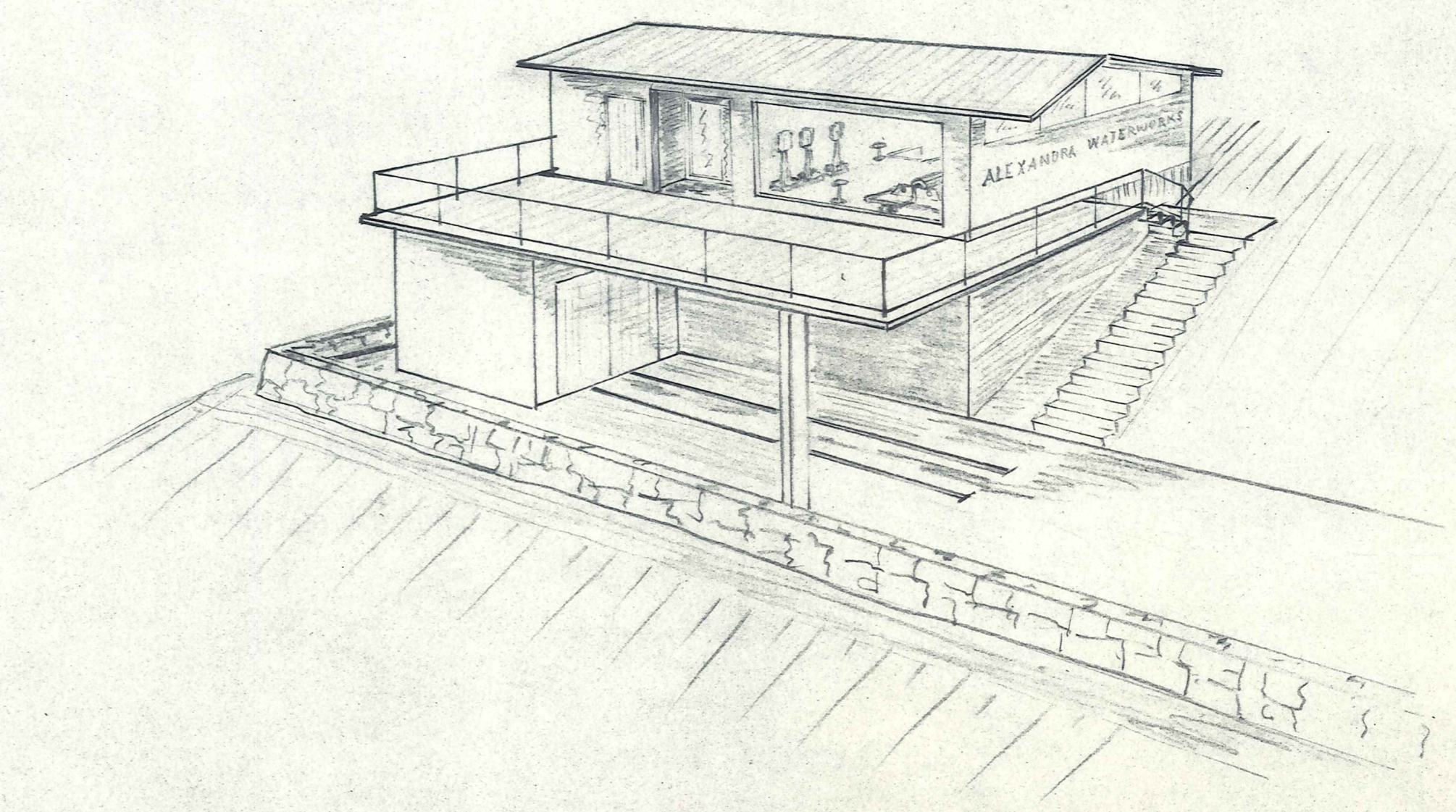
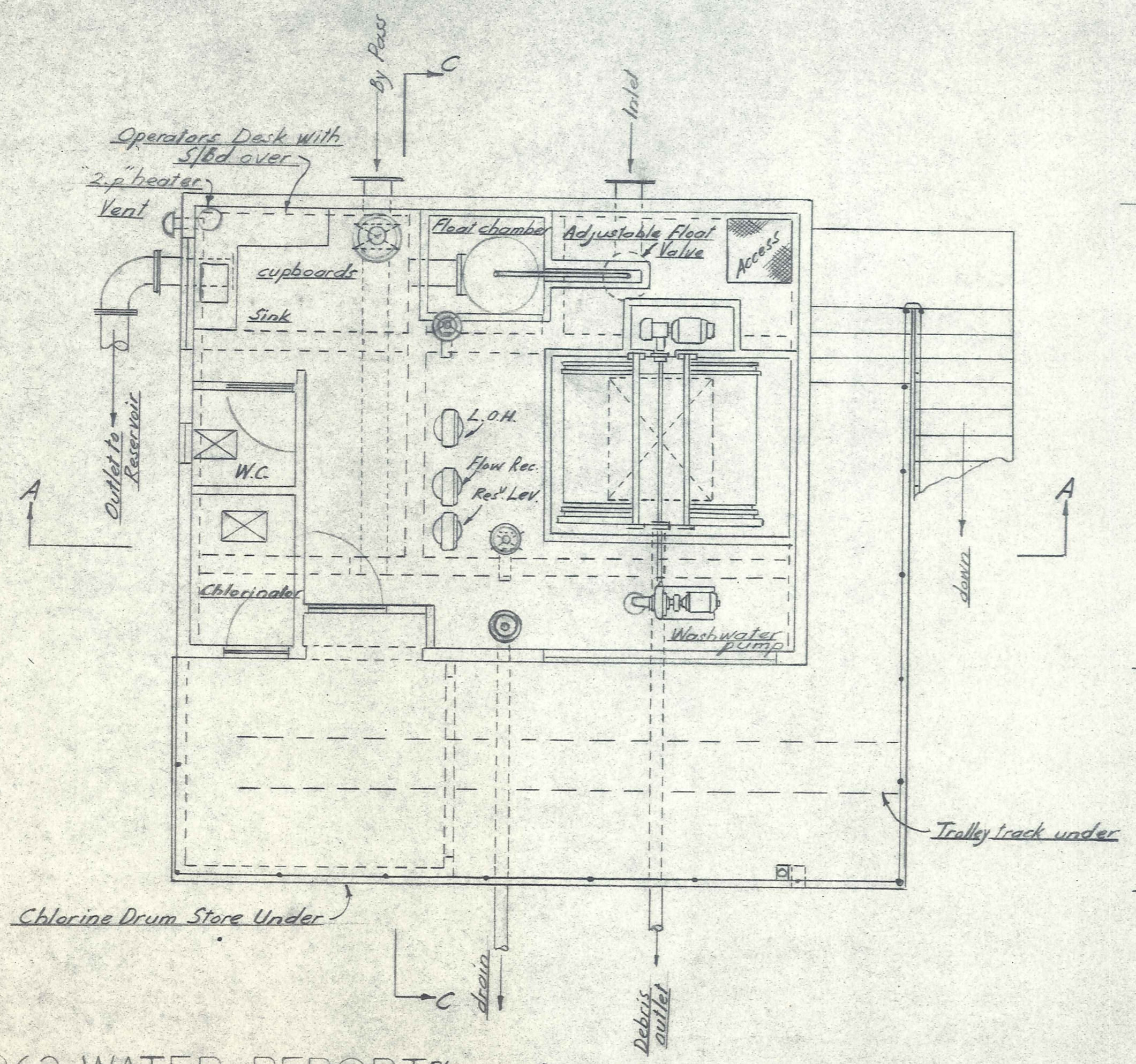
DUFFILL, WATTS & KING  
CIVIL ENGINEERS AND SURVEYORS  
DUNEDIN and INVERCARGILL

SUBMITTED BY  
DRAWN  
CALCULATED  
CHECKED  
DATE  
R. Allworden Feb. 1962

JOB NO.  
4211/2  
FILE NO. 21/7



Scale: 1/4" = 1 FT.



1962 WATER REPORT Plan on Section B-B

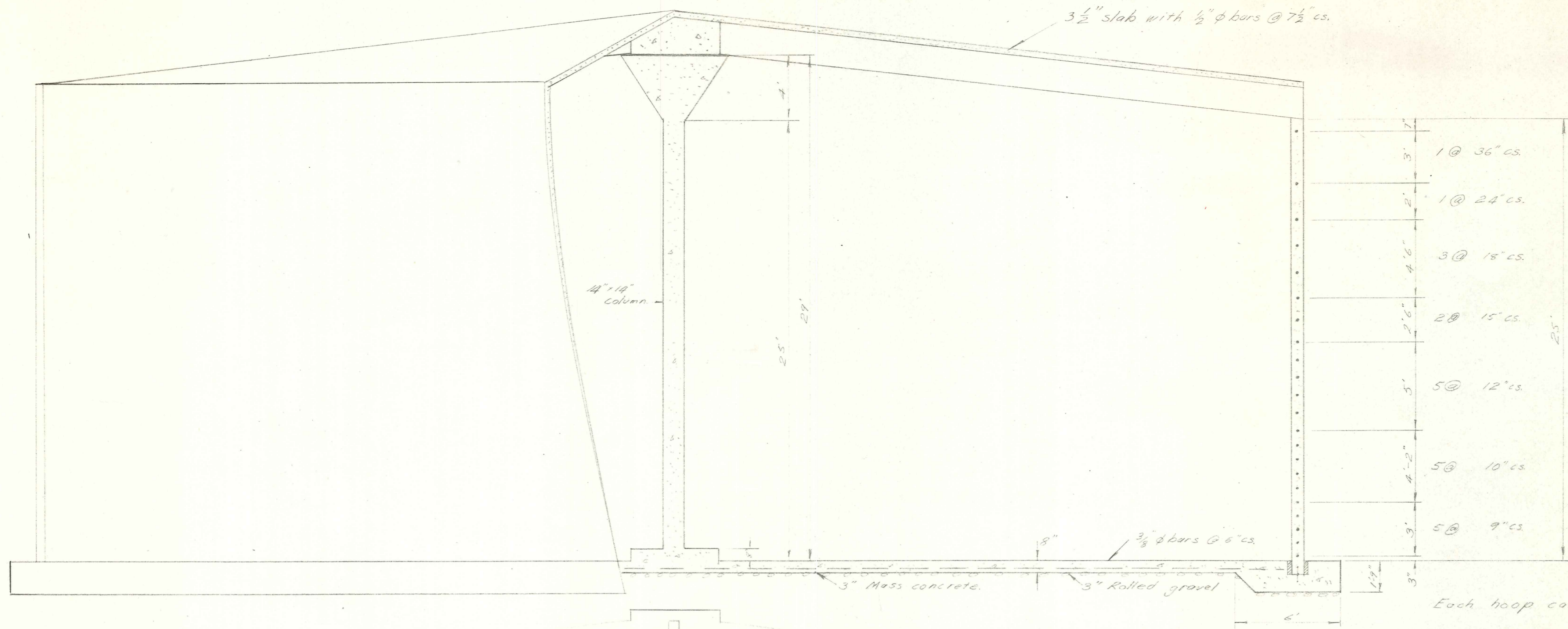
ALEXANDRA BOROUGH COUNCIL

POSSIBLE MICROSTRAINER LAYOUT

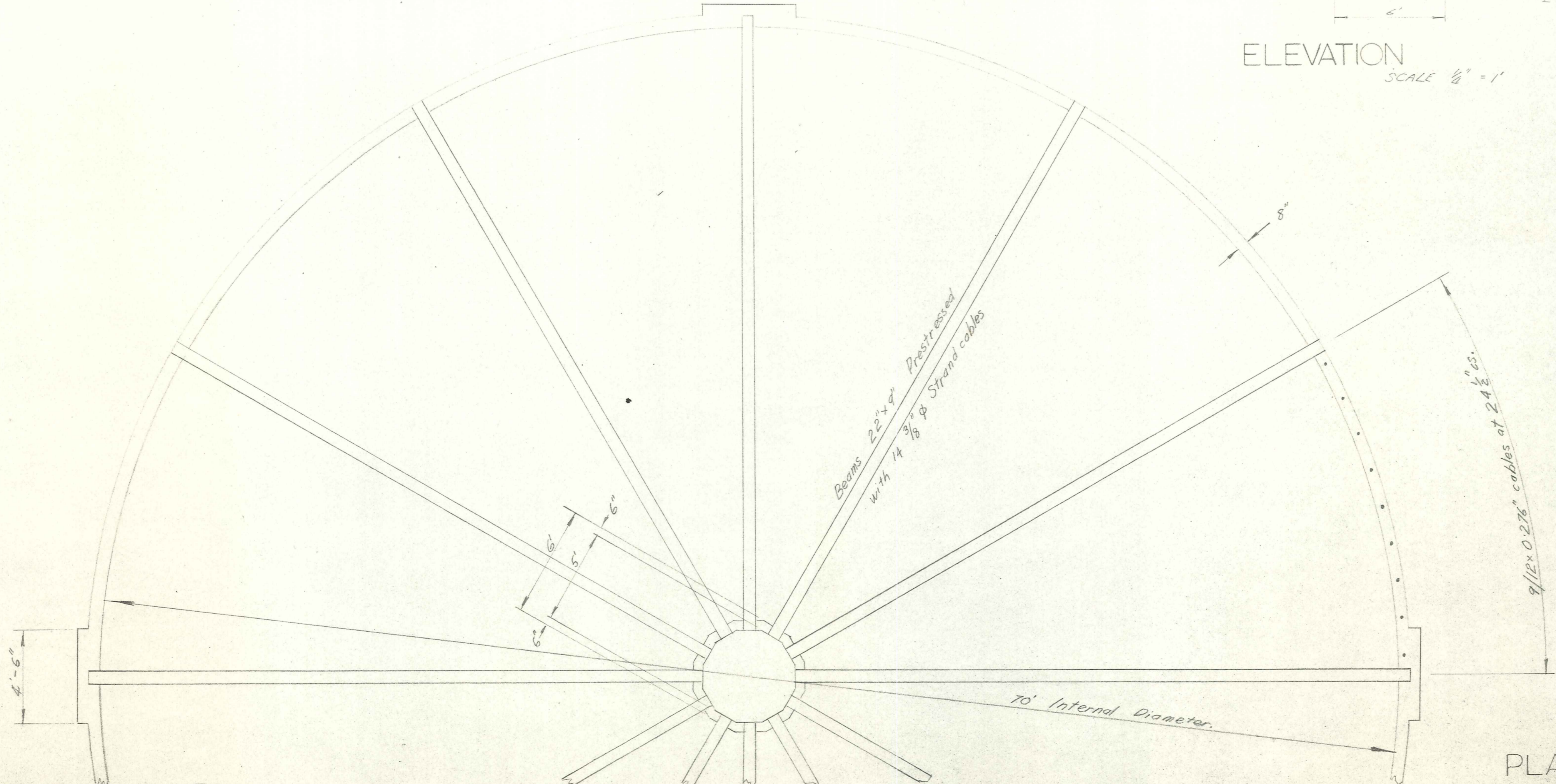
DUFFILL, WATTS & KING  
 CIVIL ENGINEERS AND SURVEYORS  
 DUNEDIN and INVERCARGILL

NO.	NAME	DATE
DESIGNED BY	I.R. Fairman	Feb 1962
CHECKED	R. Allworden	Feb 1962

JOB NO.  
 4211/3  
 FILE NO. 2/7



ELEVATION  
SCALE 1/8" = 1'



PLAN  
SCALE 1/2" = 1'

1962 WATER REPORT

ALEXANDRA BOROUGH COUNCIL

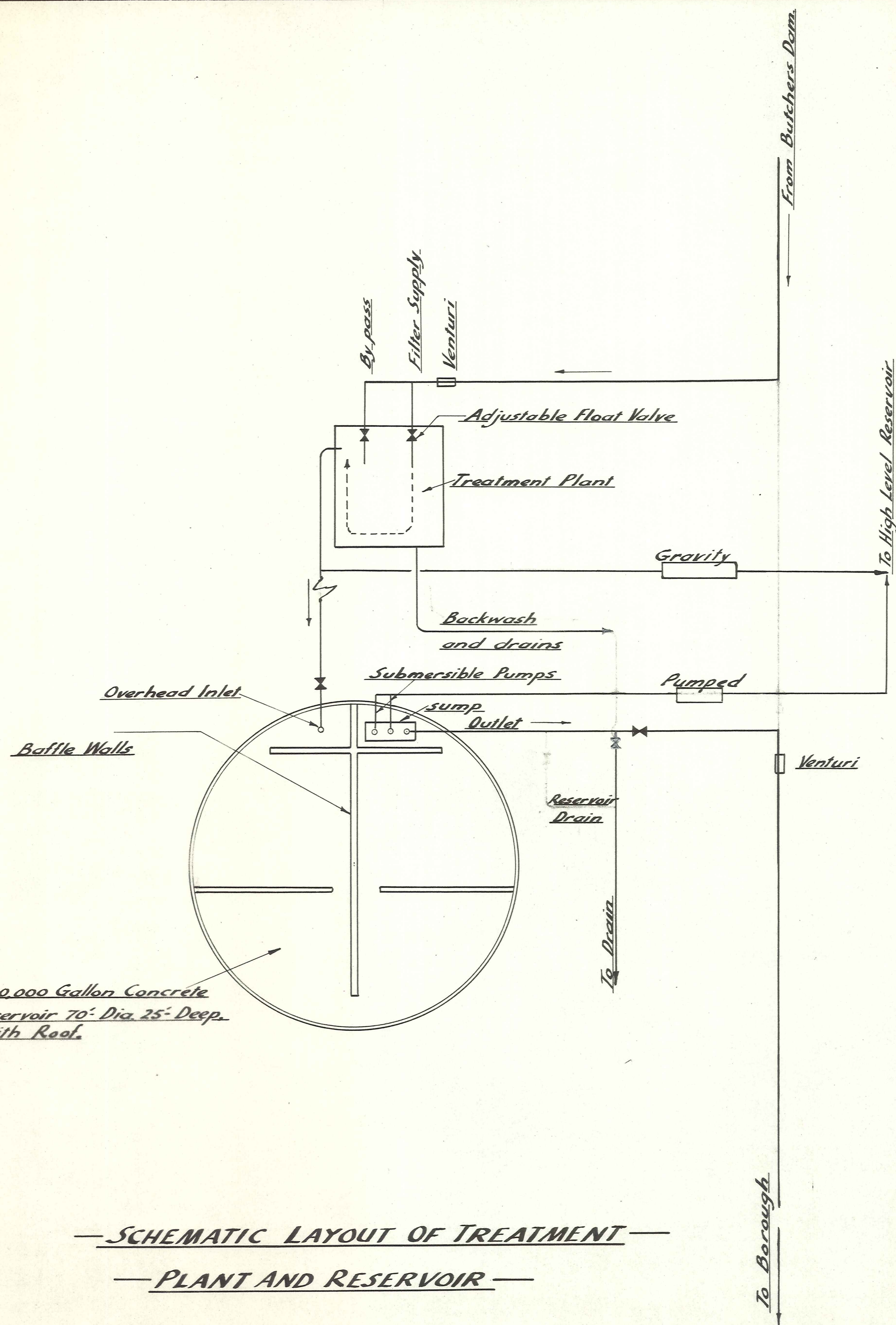
600,000 GALLON PRESTRESSED RESERVOIR

DUFFILL, WATTS & KING  
CIVIL ENGINEERS AND SURVEYORS  
DUNEDIN and INVERCARGILL

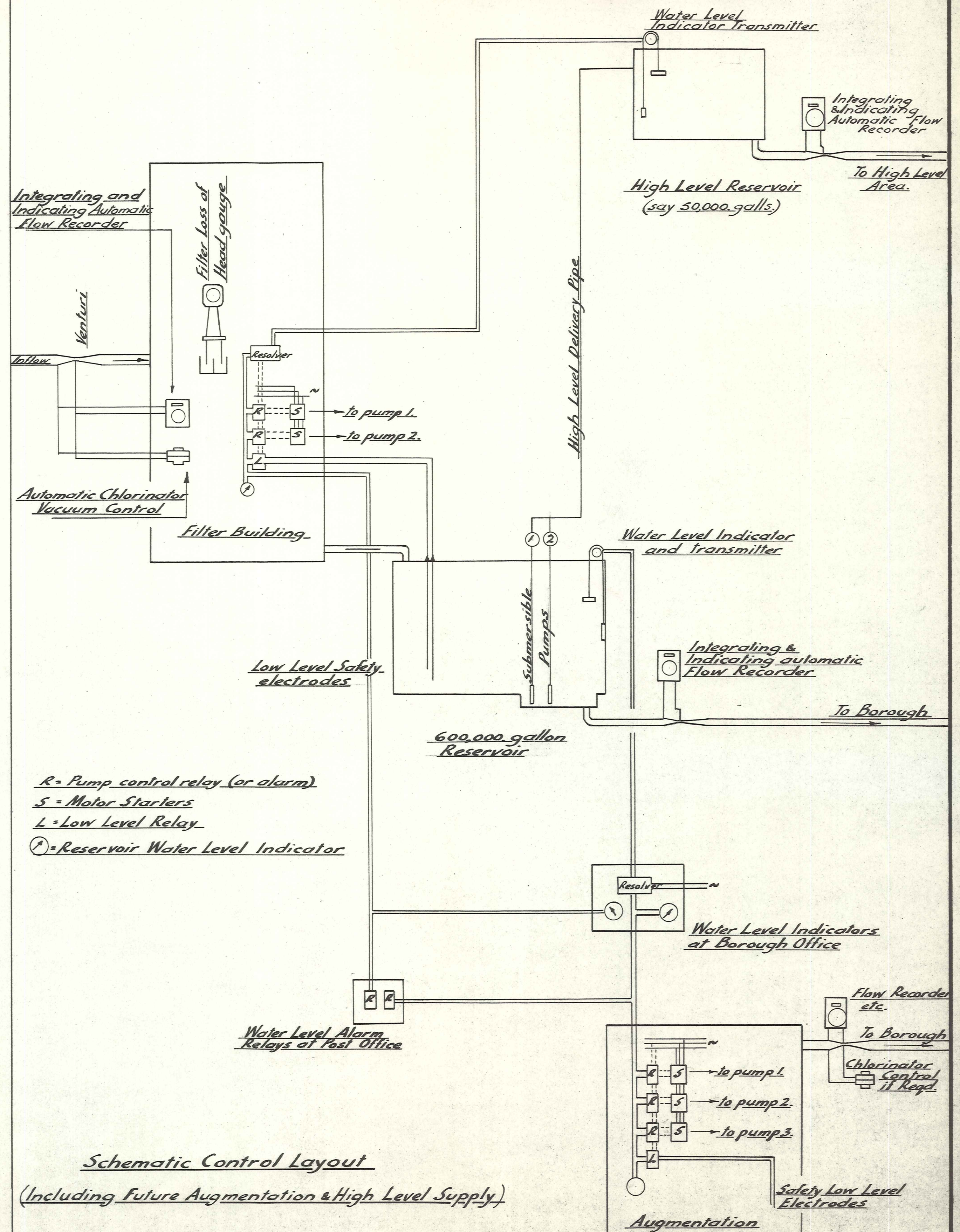
REVISED BY	DATE
J. H. Watt	Feb 62
D. King	Feb 62

JOB No.  
4211/4

FILE No. 21/7

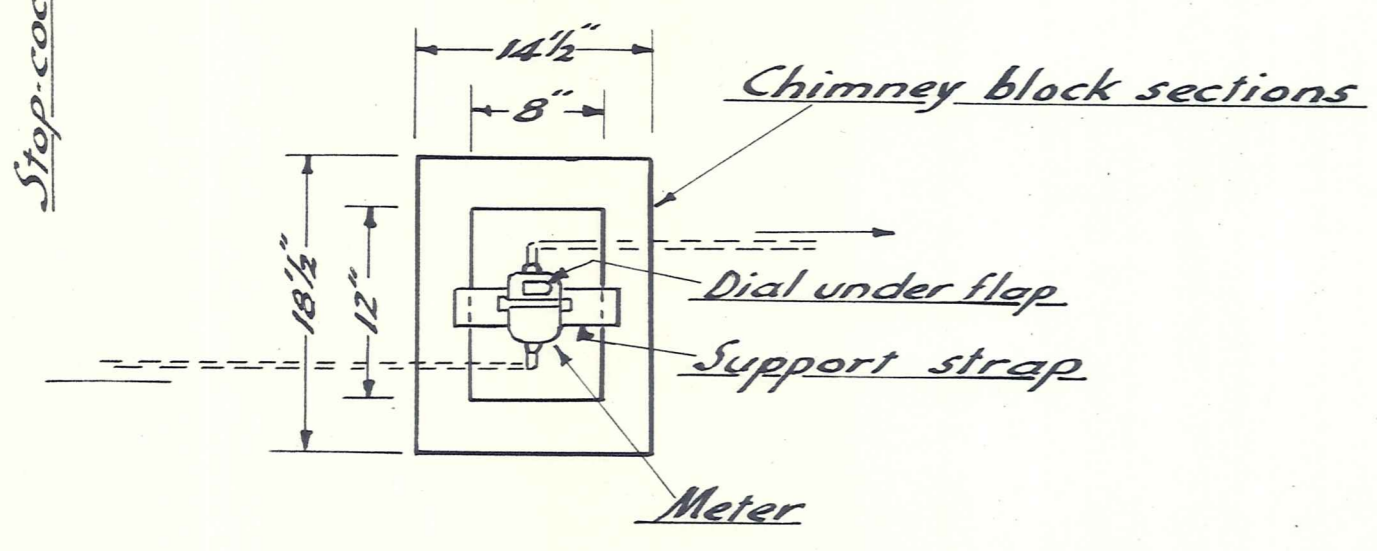
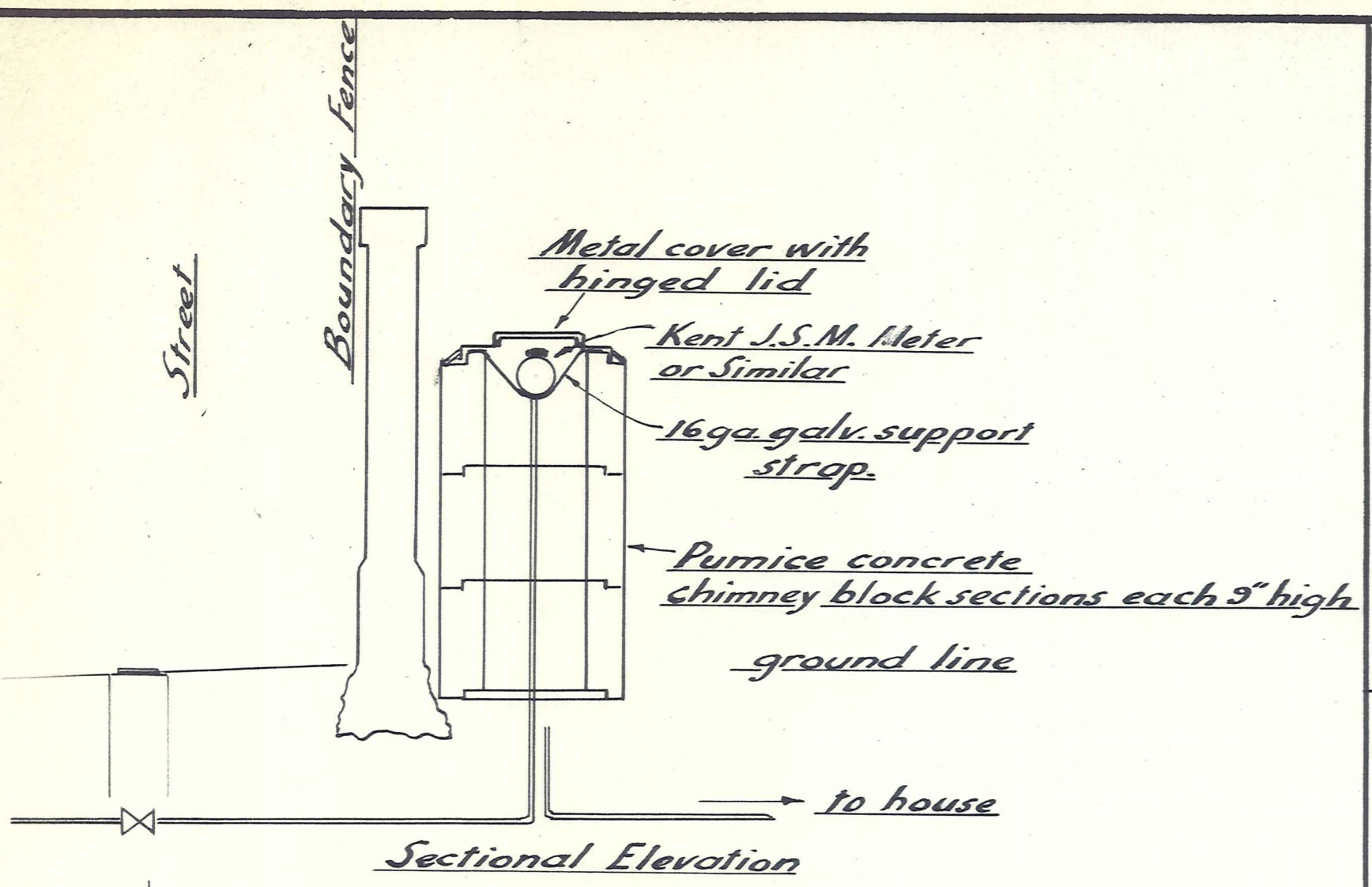


— SCHEMATIC LAYOUT OF TREATMENT —  
— PLANT AND RESERVOIR —



- R = Pump control relay (or alarm)
- S = Motor Starters
- L = Low Level Relay
- ⊙ = Reservoir Water Level Indicator

Schematic Control Layout  
(Including Future Augmentation & High Level Supply)



Typical Domestic Meter Installation.  
Scale 1" = 1' FT.

