

Vallance Cottage Reserve

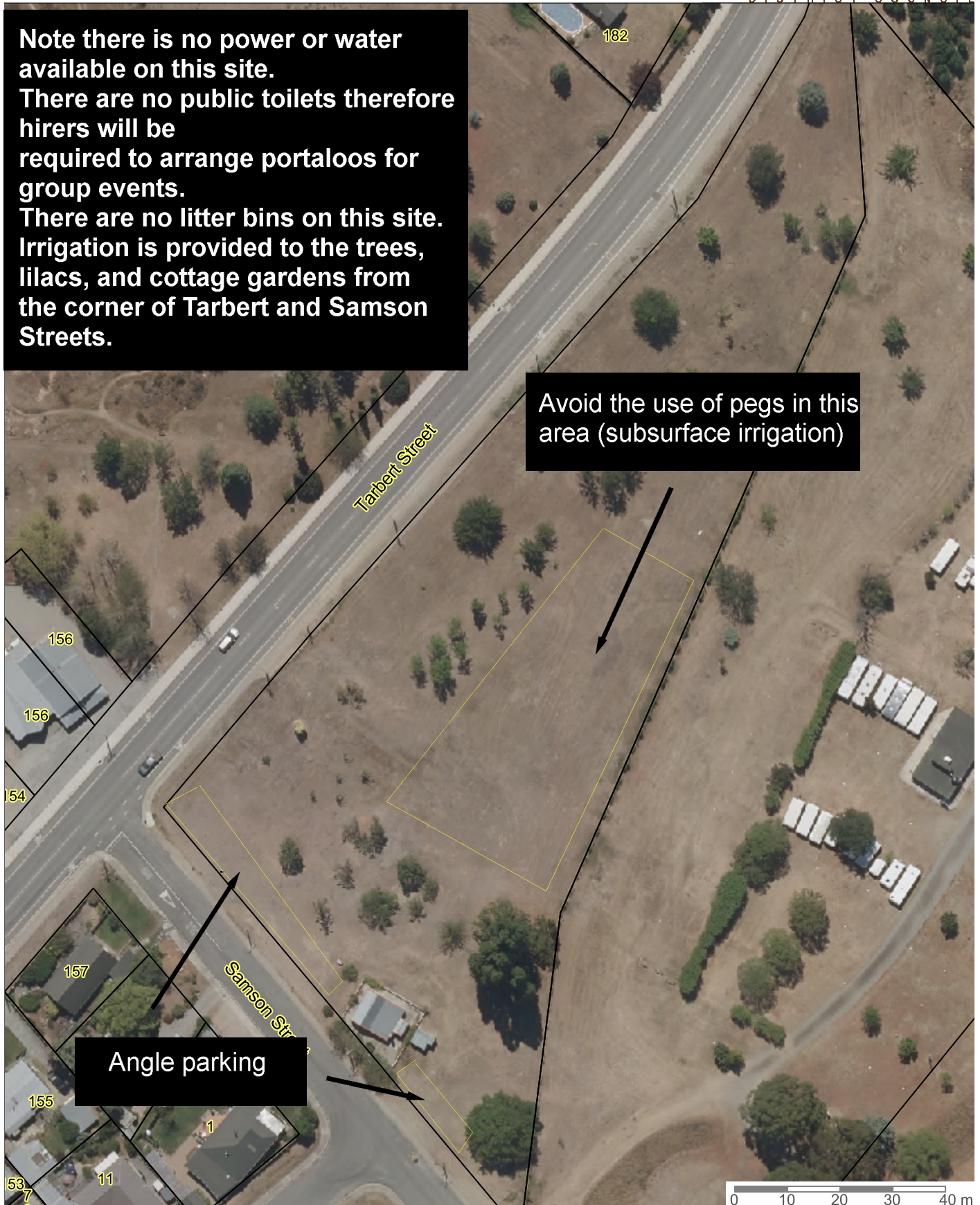
Created Date: 25/11/2019
Created Time: 4:43 PM
Created By: mlg




Note there is no power or water available on this site.
There are no public toilets therefore hirers will be required to arrange portaloos for group events.
There are no litter bins on this site.
Irrigation is provided to the trees, lilacs, and cottage gardens from the corner of Tarbert and Samson Streets.

Avoid the use of pegs in this area (subsurface irrigation)

Angle parking



 Scale: 1:1000
Original Sheet Size A4
Projection: NZTM2000

Bounds: 1317443.39345103,4983066.45588825
1317708.88897538,4983396.52113955

The information displayed in the Geographic Information System (GIS) has been taken from Central Otago District Council's (CODC) databases and maps.
Digital map data sourced from Land Information New Zealand (LINZ).
Licensed under the Creative Commons Attribution 4.0 International licence
<https://creativecommons.org/licenses/by/4.0/>

It is made available in good faith but its accuracy or completeness is not guaranteed. CODC accepts no responsibility for incomplete or inaccurate information.

If the information is relied on in support of a resource consent it should be verified independently.